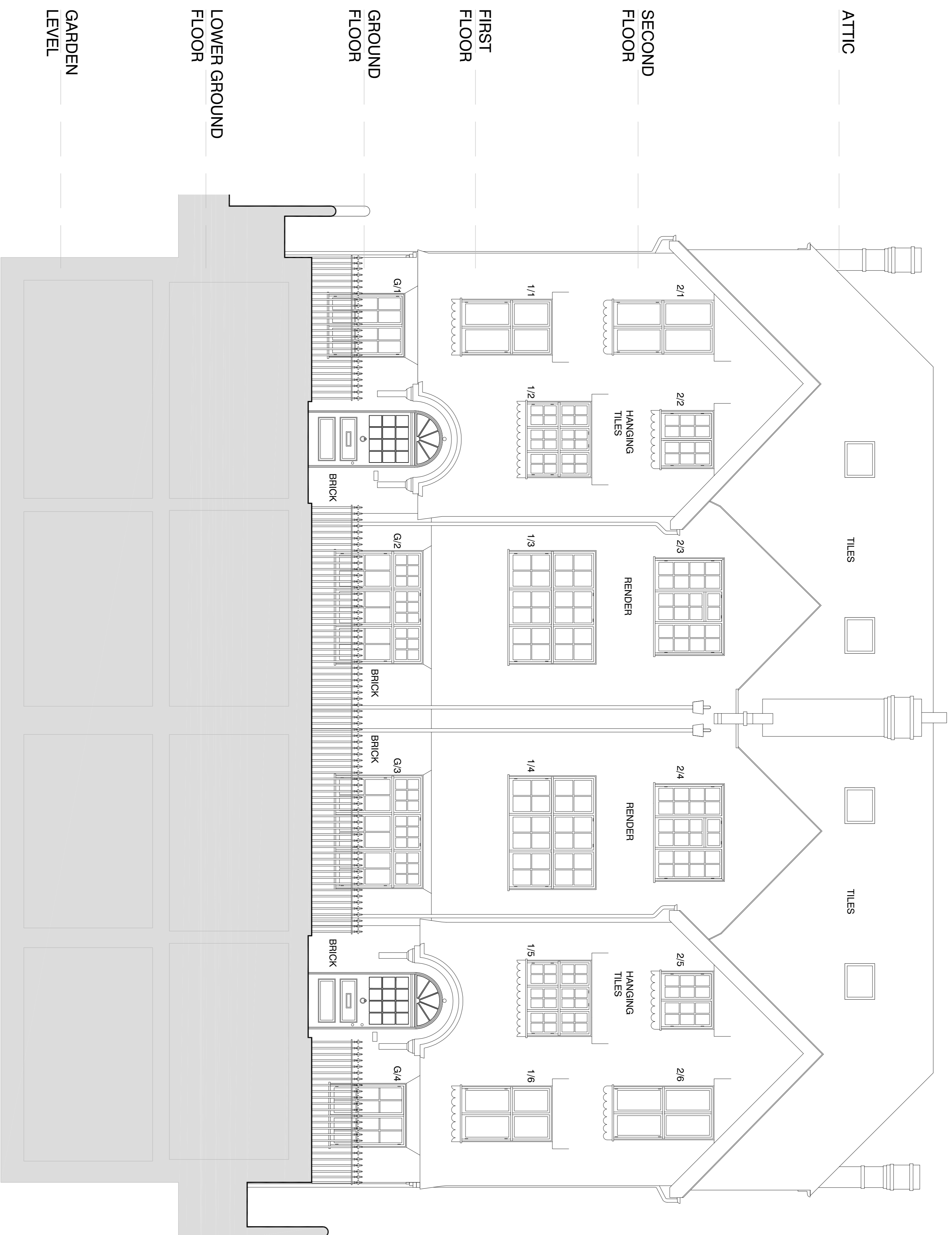


NOTES

1. This drawing is based on the following documents:
 - (i) a CAD file of the front facade as built by KYSON, supplied by the client;
 - (ii) images of the front facade before the works were carried out, supplied by Camden Council;
 - (iii) drawing no 1112/AP-25 by The Charlton Brown Partnership of the approved front facade - 2011/0174/P from the Council's website.
2. The proposed fenestration is a combination of fixed and operable casements. Operable casements are identified by hinges.
None of the above documents (i)-(iii) provide adequate information for returning the front facade to its as approved state shown in the relevant drawing no 1112/AP-25. This is because:
 - The approved drawing no 1112/AP-25 is not detailed enough to rely upon as it does not distinguish between frames and actual casements;
 - Camden's images only cover some of the windows.Both approved drawing and images have been used to assess the likely thickness of the frame sections and of the glazing bars and the relationship to each other. It is helpful that the original fenestration apertures were retained.



client: SHAKIB & Co
project

2082 29-30 LYNDHURST ROAD
ALTERATIONS TO: FENESTRATION OF FRONT
AND REAR FACADES, UPPER LEVEL DORMERS
TO REAR; RETENTION OF ROOF TERRACE,
RETAINING WALL AND OPENINGS AT LG AND
GARDEN LEVELS AS BUILT

D2100 - PROPOSED

rev:00
scale: 1:50 at A1
date: 11/11/2014

FRONT ELEVATION

CONSERVATION PD
p l a n n i n g + d e s i g n

a 114-118 Parkway
London NW1 7AN
t 020 7096 1504
f 020 7504 1701
e eleninakrri@conservationpd.com
w www.conservationpd.co.uk