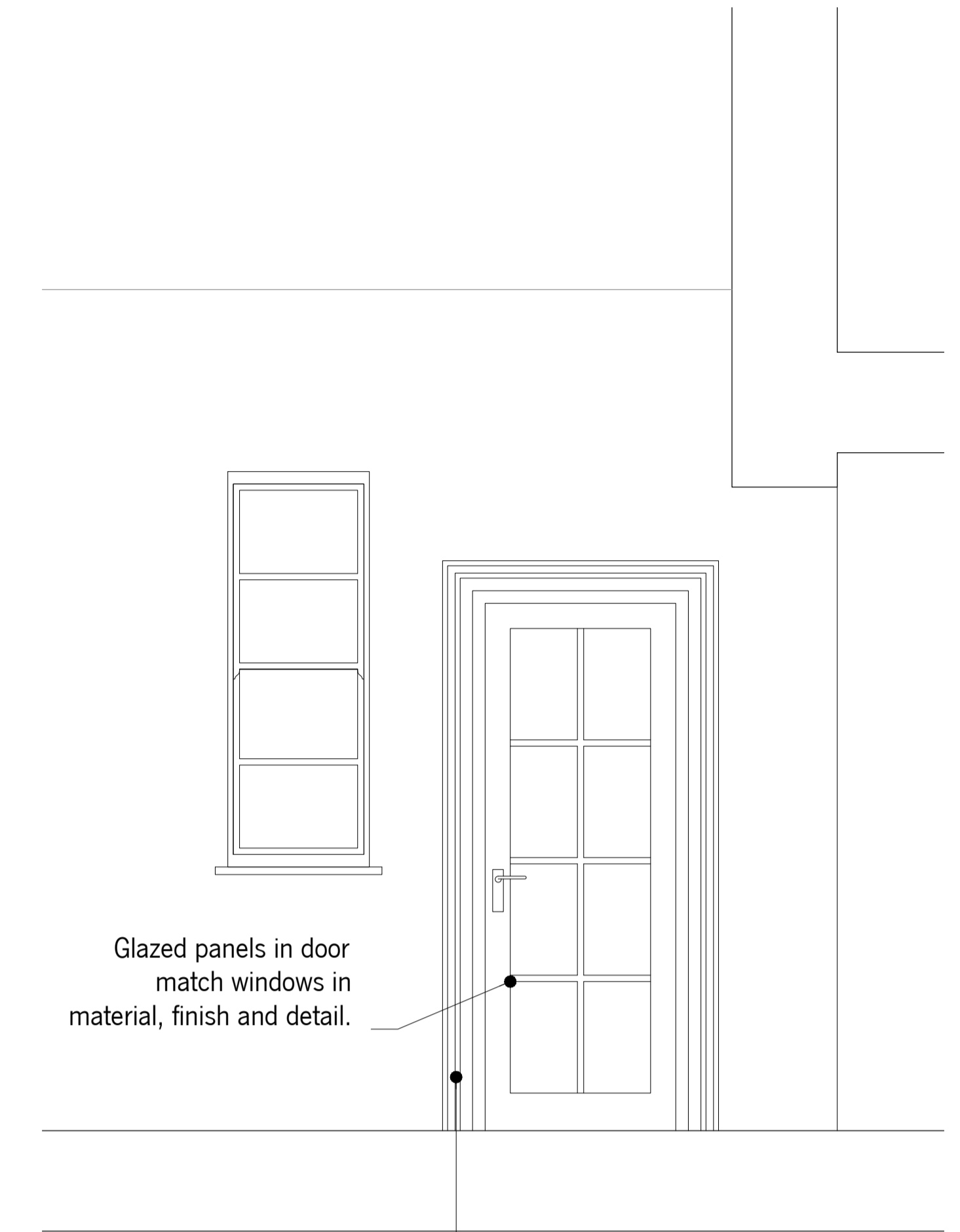
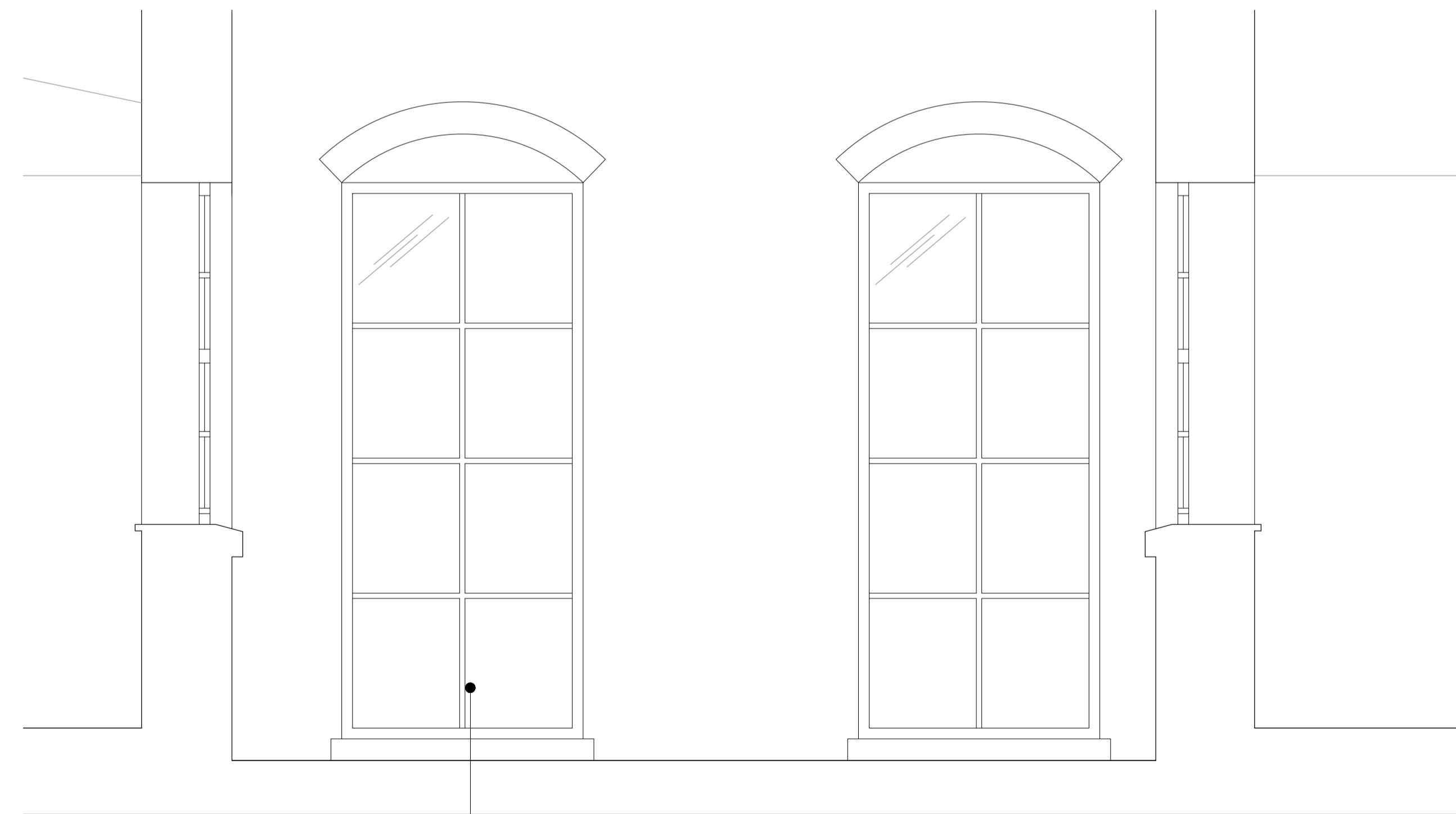


ELEVATION A



ELEVATION C

Existing architrave to be retained and repainted.



ELEVATION B

NOTES

1. Drawings indicative only. Manufacturer to provide shop drawings for approval.
2. Timber sash windows to match existing windows above in appearance and dimensions. To be painted with 3 x coats of suitable paint.
3. Glazing to be Slimlite double glazing to comply with Listed Building Consent.
4. Contractor to confirm use of glazing with Building Control.



CONTACT
Unit 202
Mare Street Studios
203-213 Mare Street
London E8 3QE
+44 (0)20 7998 3641
studio@studioitl.com
http://www.studioitl.com

PROJECT
19-21 HATTON GARDEN
TITLE
WINDOW DETAIL
DATE
01.09.14

SCALE
1:20 @ A1
FILE NAME
HED_D_A_C_WINDOW
DETAIL_V3

PROJECT CODE
HED
DRAWN BY
MW
DRAWING N°
010/8

DESCRIPTION
Drawing content description
SHEET N°
4/4

STAGE
FOR COMMENT

REVISION | DESCRIPTION | REV. BY | DATE
vX | Description of changes | Your Initials | xx.xx.12

REVISION | DESCRIPTION | REV. BY | DATE
vX | Description of changes | Your Initials | xx.xx.14