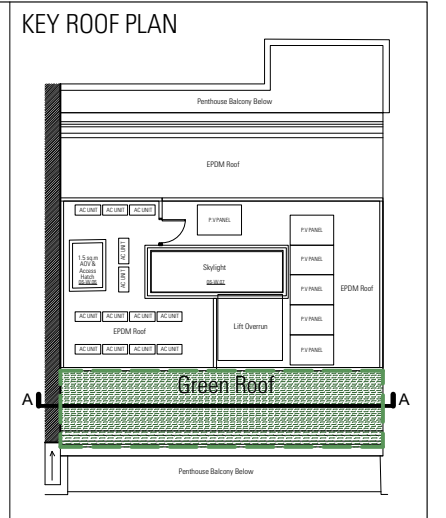


- FULLY GROWN SEDUM NUTRIMAT - Base of 35mm recycled open pore soft PU foam with drainage profiles to the underside, 45mm growing medium, vegetation containing 6 plant species.
- PROTECTION FLEECE
- HERTALAN EPDM WATERPROOF MEMBRANE - bonded to insulation with bonding adhesive hertalan ks143
- 120MM PIR INSULATION
- VAPOUR BARRIER
- 18MM WBP PLY
- 47x225mm C24 RAFTERS @ 300mm C/C WITH 60mm MINERAL WOOL INSULATION IN BETWEEN
- 12mm PLY WITH VAPOUR CONTROL MEMBRANE BENEATH
- MF SUSPENDED CEILING WITH 15MM SOUNDBLOC PLASTERBOARD



Notes:

**01** Penthouse Party Wall Details between 30-32 and 34-36 Gray's Inn Rd - Front Balcony  
Scale 1:5@A3

Revisions	
C1	07/10/14 Issued for Planning Condition 5 Discharge

Client  
Holbud Investments  
Project  
30-32 Grays Inn Road  
London WC1

Gate House  
1 St John's Square  
London EC1M 4DH  
T +44 20 7490 7674  
studio@harperdownie.com  
www.harperdownie.com

Drawing Title  
Green Roof Cross Section Detail  
Scale  
1:10 @ A3  
Drwg. No. & Revision  
647-dE019-C1

Status	Drawn	Checked
Planning Condition Discharge	NM	GO
Date	Oct 2014	

Information contained within this drawing is the sole copyright of HDDA Ltd. and is not to be reproduced without express permission. No implied licence exists. This drawing not to be used for land transfer or valuation purposes. Do not scale from this drawing. All dimensions & levels are to be checked on site by the contractor. Issued for purposes indicated only. Drawing errors and omissions to be reported to the architect.