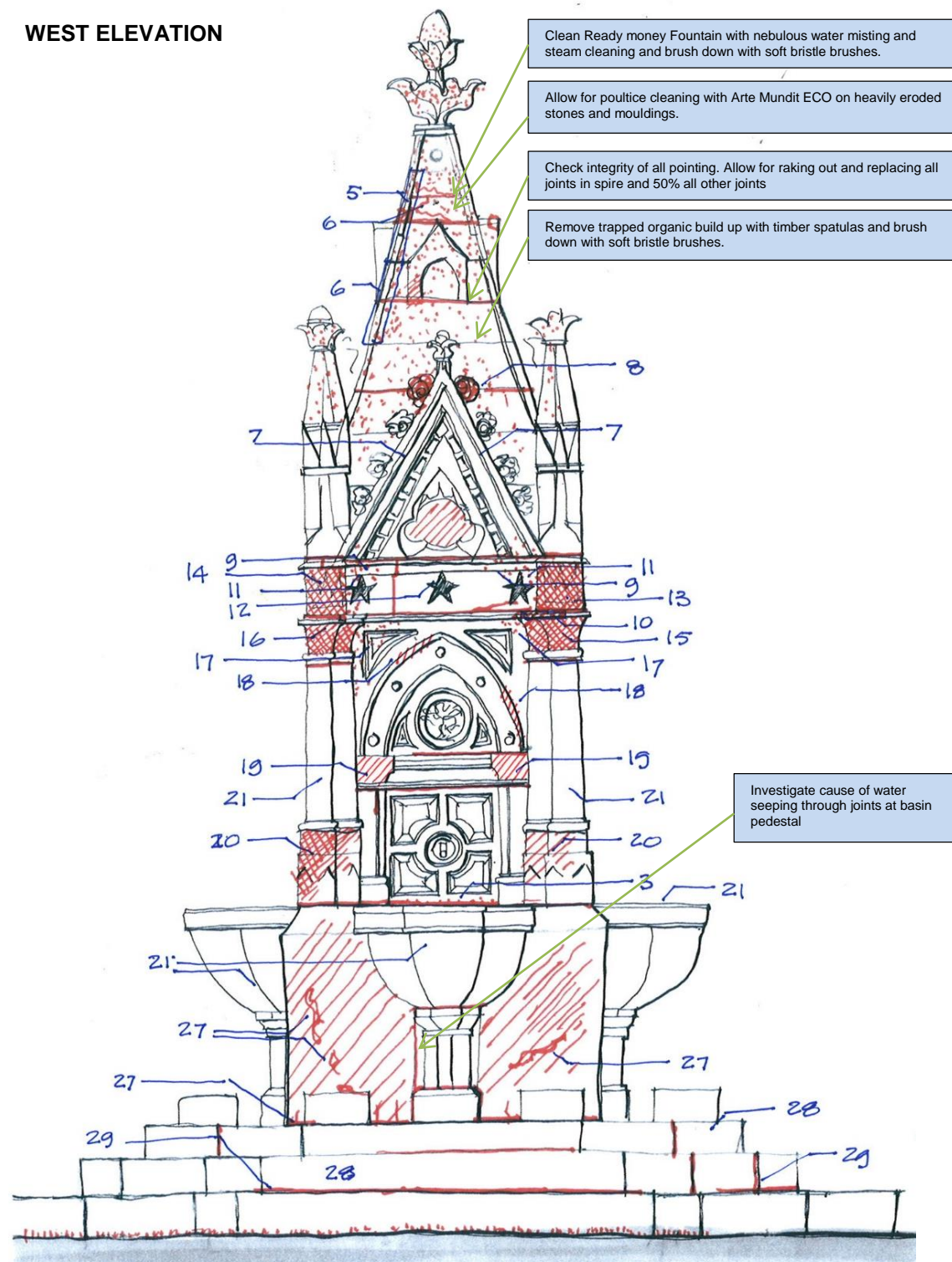


**HK 2139 READYMONEY FOUNTAIN, REGENTS PARK
SCHEDULE OF CONDITION & REPAIRS
WEST ELEVATION.**

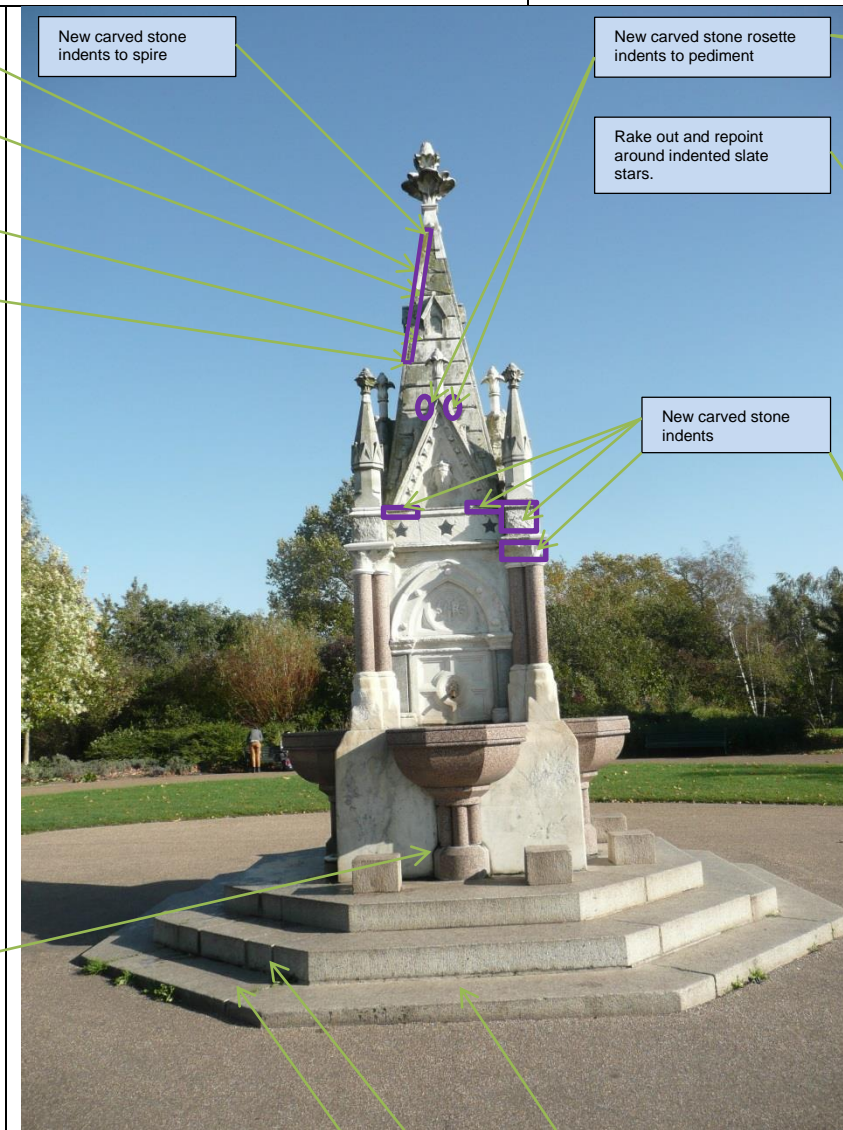
<p>Name of Item: Readymoney Fountain, Regents Park, NW1 4RY</p> <p>Description:- Rectangular plinth with large D-shaped faceted basins on paired colonnettes to each face; flanked on each face by rectangular standing blocks for children. Rectangular fountain with paired colonnettes at angles supporting star enriched frieze and gabled spire with pinnacles of small spires at angles. Crocketed gables on 3 faces contain carved busts of the donor, the Prince Consort and Queen Victoria; the 4th once carried a clock. Each face with enriched pointed arch on half-length pilasters flanking the water spout set in geometrically patterned carved marble.</p> <p>Listing: N/A:- Grade 2 listed.</p> <p>Ord. Survey Grid Ref: TQ2883SW</p>	<p>Inspected by: Matt O'Farrell, Grace Howat</p>
---	---

WEST ELEVATION



- Clean Ready money Fountain with nebulous water misting and steam cleaning and brush down with soft bristle brushes.
- Allow for poultice cleaning with Arte Mundit ECO on heavily eroded stones and mouldings.
- Check integrity of all pointing. Allow for raking out and replacing all joints in spire and 50% all other joints
- Remove trapped organic build up with timber spatulas and brush down with soft bristle brushes.

Investigate cause of water seeping through joints at basin pedestal



New carved stone indents to spire

New carved stone rosette indents to pediment

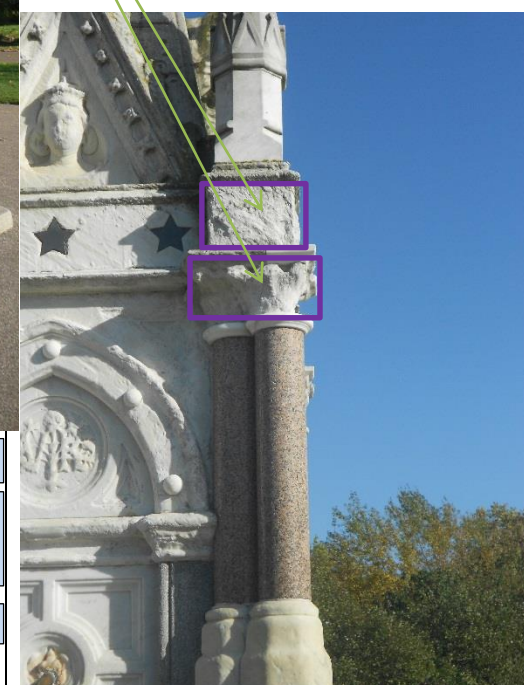
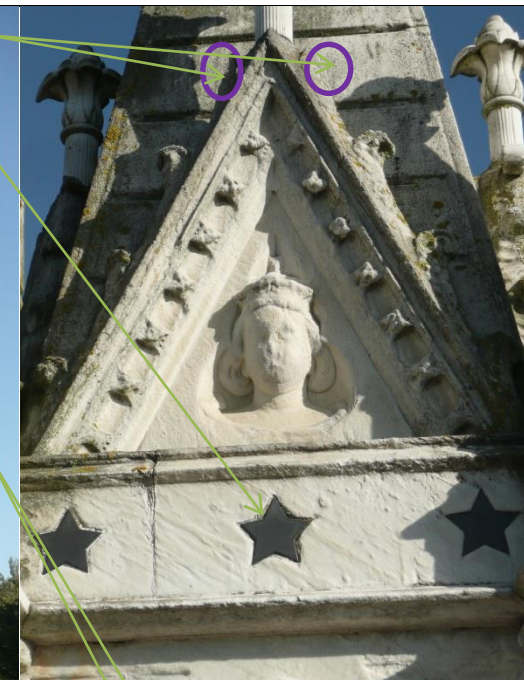
Rake out and repoint around indented slate stars.

New carved stone indents

DOFF clean steps and landings

Rake out joints and repoint flush to match existing using 5NHL mortar. All perpend joints to be fully raked out and repointed including sky face

Pin and point crack in granite step



NB. Read in conjunction with General Items listed below

**HK 2139 READYMONEY FOUNTAIN, REGENTS PARK
SCHEDULE OF CONDITION & REPAIRS
WEST ELEVATION.**

GENERAL ITEMS		
	LOCATION	DESCRIPTION
		Replacement marble elements to be Carrara marble (statuary) to match the original in colour, graining, density and porosity. Provide sample stones for approval. Remove remains of any previous broken repairs, model replacement carvings in situ in clay for approval. New carvings to approval. Fix new and salvaged elements with stainless steel pins in polyester resin with paraloid separation primer. Dress damaged/degraded stone as necessary to form a clean joint. Keep a photographic record of before and after the replacements of lost items and provide two copies to the PM/CA. All to General Specification Sections C41, C45 & Z20.
1	All marble elements	Initially remove trapped organic build up with timber spatulas and brush down with soft bristle brushes.
2	All marble elements	Clean down all elements with a combination of nebulous water misting and steam cleaning. Including all faces
3	All marble elements	Provide for poultice cleaning with Arte Mundit ECO on heavily eroded stones and mouldings.
4	All marble elements	Check integrity of all pointing. Allow for raking out and replacing all joints in spire and 50% of other joints
5	Spire	Fit new marble indent with ridge mouldings to replicate existing
6	Spire lancet	Fit new marble indent to left hand side roof verge to replicate existing.
7	Pediment	After cleaning treat weathered surface with ammonium oxalate solution and provide lime based shelter coat to further protect the surface.
8	String moulding	After cleaning treat weathered surface with ammonium oxalate solution and provide lime based shelter coat to further protect the surface.
9	String moulding	Fit new marble indent with moulding to replicate existing on stainless steel pins and point with mortar
10	String moulding	Fit new marble indent with moulding to replicate existing on stainless steel pins and point with mortar
11	Frieze	After cleaning treat weathered surface with ammonium oxalate solution and provide lime based shelter coat to further protect the surface.
12	Frieze	Rake out and repoint around indented slate stars.
13	Frieze corner	Remove existing weathered stone and insert new stone with coronet carvings in low relief to match existing. Polished finish.
14	Frieze corner	After cleaning treat weathered surface with ammonium oxalate solution and provide lime based shelter coat to further protect the surface.
15	Colonette capital	Remove existing weathered stone and insert marble capital with enriched carvings to match existing. Polished finish.
16	Colonette capital	After cleaning treat weathered surface with ammonium oxalate solution and provide lime based shelter coat to further protect the surface.
17	Marble spandrels	After cleaning treat weathered surfaces with ammonium oxalate solution and provide lime based shelter coat to increase protection.
18	Lancet arches	After cleaning treat weathered surfaces with ammonium oxalate solution and provide lime based shelter coat to increase protection.
19	Lancet capitals	After cleaning treat weathered surfaces with ammonium oxalate solution and provide lime based shelter coat to increase protection.
20	Colonette bases	After cleaning treat weathered surfaces with ammonium oxalate solution and provide lime based shelter coat to increase protection.
21	Pink Granite basin.	DOFF clean basins and engaged corner colonnettes.
22	Pink Granite basin.	Rake out and point all joints in pedestal Pink Granite basin.
23	Pink Granite basin.	Provide for micro-abrasive cleaning to remove calcite staining on basin supports.
24	Pink Granite basin.	Provide new purpose made bronze basin with waste and 2no drinking fountains and plumb to existing supply and waste systems.
25	Grey Granite facings	Consolidate friable surface.
26	Marble plinth.	After cleaning treat weathered surfaces with ammonium oxalate solution and provide lime based shelter coat to increase protection.
27	Marble plinth	Flush out cracks and inject with lime grout.
28	Granite steps	DOFF Clean steps and landings
29	Granite steps	Rake out joints as indicated and repoint flush to match existing using 5NHL mortar. All perpend joints to be fully raked out and repointed including sky face.