

# HERITAGE DESIGN AND ACCESS STATEMENT

**GHK ARCHITECTS**

**Project:** Readymoney Fountain  
**Client:** The Royal Parks  
**Title:** Heritage Design and Access Statement  
**Date:** 10 November 2014

**Ref/File No:** HK 2139/3.1



**Readymoney Fountain from the east.**

**Architects Designers Historic Building Specialists**

Gilmore Hankey Kirke Limited, Heckfield Place, 530 Fulham Road, London SW6 5NR, UK  
Tel: +44 (0)20 7471 8000 mail@ghkarchitects.co.uk www.ghkarchitects.co.uk  
GHK ARCHITECTS is the trading name of Gilmore Hankey Kirke Limited  
Company Registration: 1192845 Registered in England Vat Registration: 100 1639 75

## INTRODUCTION

Listed Building Consent is being sought for cleaning and conservation repair works to the stone masonry on the drinking fountain known as the Readymoney Fountain on the Broadwalk in Regents Park. Thee 2014 has identified stone repairs and pointing in urgent need of attention. The operation of the drinking fountain is also being reviewed, it is difficult to access for children and small adults, the automatic switching functions poorly leading to handling and possible cross contamination. an the water splashes on to the masonry. Conservation repairs will mostly consist of repointing, stone consolidation and some stone indent repairs to replace failed stones. Mild cleaning will be carried out to remove remove soiling on the spire and marble work. The drinking fountain is redesigned to mitigate water tracking into the masonry.

## LISTING

The Ready money Fountain is Grade II listed

Drinking fountain. 1896. Designed by Robert Keirle, architect to The Metropolitan Free Drinking Fountain and Cattle Trough Association for Sir Cowasjee Jehangir. White Sicilian marble, pink and grey Aberdeen granite. Gothic design set on octagonal base of 3 steps. Rectangular plinth with large D-shaped faceted basins on paired colonnettes to each face; flanked on each face by rectangular standing blocks for children. Rectangular fountainwith paired colonnettes at angles supporting star enriched frieze and gabled spire with pinnacles of small spires at angles. Crocketed gables on 3 faces contain carved busts of the donor, the Prince Consort and Queen Victoria; the 4th has a clock. Each face with enriched pointed arch on half-length pilasters flanking the water spout set in geometrically patterned carved marble.

The monument is known as the Readymoney Fountain after its benefactor Sir Cowasjee Jehangir Readymoney, and was presented as a token of gratitude to the people of England for the protection enjoyed by him and his countrymen under British rule in India. The fountain cost £1400 and was opened by Princess Mary, Duchess of Teck

## CONDITION

The monument was extensively repaired in1999-2000 and is in fair/condition although the deterioration of the old stone work is now more obvious against the new and may be accelerating.

The marble spire and corner pinnacles have had indented marble repairs and some elements;- pinnacles and cusps, have been replaced with new carved pieces. However some parts of the marble in the spire and frieze and other high level stonework look to be open textured and friable. Some spalling is occurring notably on the south facing elevation. Algal growths are widespread on the weathered marble. The small cracks in the marble may be water traps. The finial to the west face pediment is missing.

In the middle section of the monument there are marble pointed arch panels with grey granite imposts framed by engaged polished granite shafts at the corners. The grey granite is in poor condition and spalling/friable. The column shafts are in reasonable condition however there is some surface disaggregation and loss of sheen on the west side shafts. There is an open fissure on the south west corner shaft. The carved marble capitals are all heavily weathered, however some original detail remains on the east side capitals.

The granite bowls are generally in good condition. All have a build-up of lime scale on the bowl interior. There are open joints at previous repairs and some missing indent repairs. The bronze water spouts were installed in 2000 they do not match the original design. All spouts have automatic sensors that do not function well as the sensor light beam is blinded by the curve of the spout and the spout is handled induce water flow. The spouts are too high/far for most children and many smaller adults and they are used as a grab handles.

### Architects Designers Historic Building Specialists

Gilmore Hankey Kirke Limited, Heckfield Place, 530 Fulham Road, London SW6 5NR, UK  
Tel: +44 (0)20 7471 8000 mail@ghkarchitects.co.uk www.ghkarchitects.co.uk  
GHK ARCHITECTS is the trading name of Gilmore Hankey Kirke Limited  
Company Registration: 1192845 Registered in England Vat Registration: 100 1639 75

In addition waste water is bleeding through the lower joints in the masonry beneath the bowls. There appears to be a direct link between the level of fountain usage and leakage. The basins backfall into the masonry and excess water accumulates on the basin shelf penetrating the masonry joints in the core construction at the start and end of each discharge and leaks are occurring at the waste outlets.

## **PHOTOGRAPHIC RECORD**



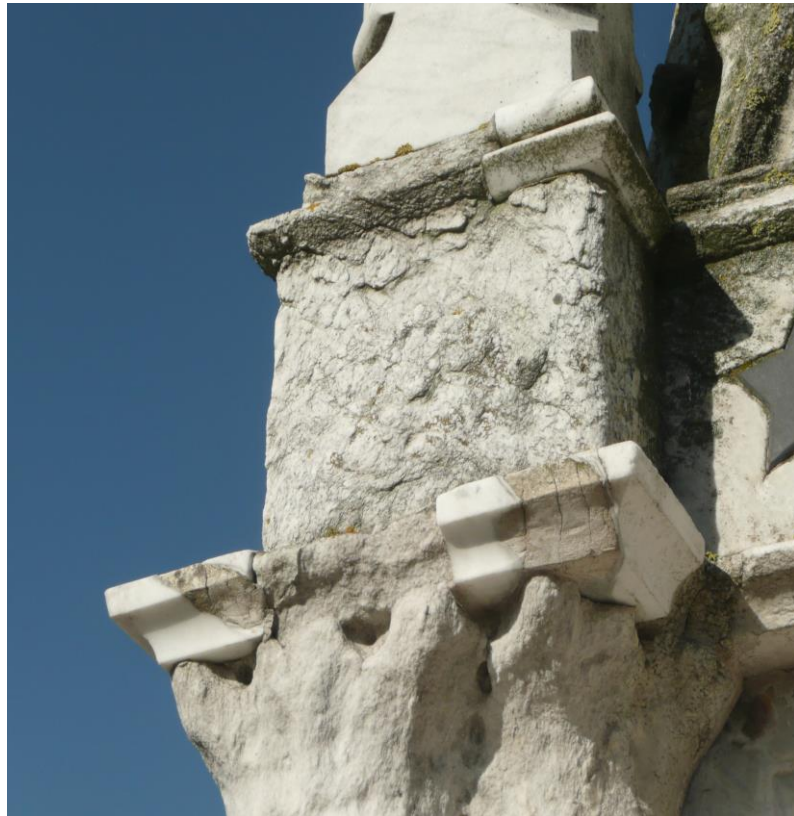
**Marble spire requiring cleaning and repair.**



**Worn stone and eroded details.**



**North elevation of spire.**



**Eroded stones on southwest corner.**

### **Architects Designers Historic Building Specialists**

Gilmore Hankey Kirke Limited, Heckfield Place, 530 Fulham Road, London SW6 5NR, UK  
Tel: +44 (0)20 7471 8000 mail@ghkarchitects.co.uk www.ghkarchitects.co.uk  
GHK ARCHITECTS is the trading name of Gilmore Hankey Kirke Limited  
Company Registration: 1192845 Registered in England Vat Registration: 100 1639 75





**Decaying marbles on the south elevation.**



**Decayed marbles on frieze of west elevation.**



**South Elevation bowl.**



**Water damage to marble and granite.**



**Failing pointing on previous repairs.**



**Water from spout on basin shelf.**

**Architects Designers Historic Building Specialists**

Gilmore Hankey Kirke Limited, Heckfield Place, 530 Fulham Road, London SW6 5NR, UK  
 Tel: +44 (0)20 7471 8000 mail@ghkarchitects.co.uk www.ghkarchitects.co.uk  
 GHK ARCHITECTS is the trading name of Gilmore Hankey Kirke Limited  
 Company Registration: 1192845 Registered in England Vat Registration: 100 1639 75





**Leaks though masonry joints on north side.**



**Active leaks though masonry on west side.**



**Open joints and crack on steps**



**Weed growths on failing masonry joints**

**Architects Designers Historic Building Specialists**

Gilmore Hankey Kirke Limited, Heckfield Place, 530 Fulham Road, London SW6 5NR, UK  
 Tel: +44 (0)20 7471 8000 mail@ghkarchitects.co.uk www.ghkarchitects.co.uk  
 GHK ARCHITECTS is the trading name of Gilmore Hankey Kirke Limited  
 Company Registration: 1192845 Registered in England Vat Registration: 100 1639 75



## SITE LOCATION PLAN, Not to scale



## DESIGN PRINCIPLES

The proposed repairs are to mitigate accelerating deterioration and to retain the heritage value and appearance of the asset and setting consistent with its landmark status and Royal Parks standards.

Only works that are essential to ensure longevity the fabric will be carried out. Original materials will be retained except where there is complete failure and they no longer perform their intended function. All repairs and new material will be carefully fitted to the existing by skilled masons and craftsmen.

The proposed works comprise localised cleaning, minor stone repairs with new matching stone indents to replace the missing pieces, pinning of cracks in balusters and other stones and repointing. The lighting standards will be serviced, repaired and redecorated.

The visual appearance of the asset will be unchanged.

## ACCESS STATEMENT

Existing access arrangements will be unchanged. The proposed alterations the water supply will make the fountain more accessible for most users. Access will be restricted during the course of the works.

### Architects Designers Historic Building Specialists

Gilmore Hankey Kirke Limited, Heckfield Place, 530 Fulham Road, London SW6 5NR, UK  
Tel: +44 (0)20 7471 8000 mail@ghkarchitects.co.uk www.ghkarchitects.co.uk  
GHK ARCHITECTS is the trading name of Gilmore Hankey Kirke Limited  
Company Registration: 1192845 Registered in England Vat Registration: 100 1639 75