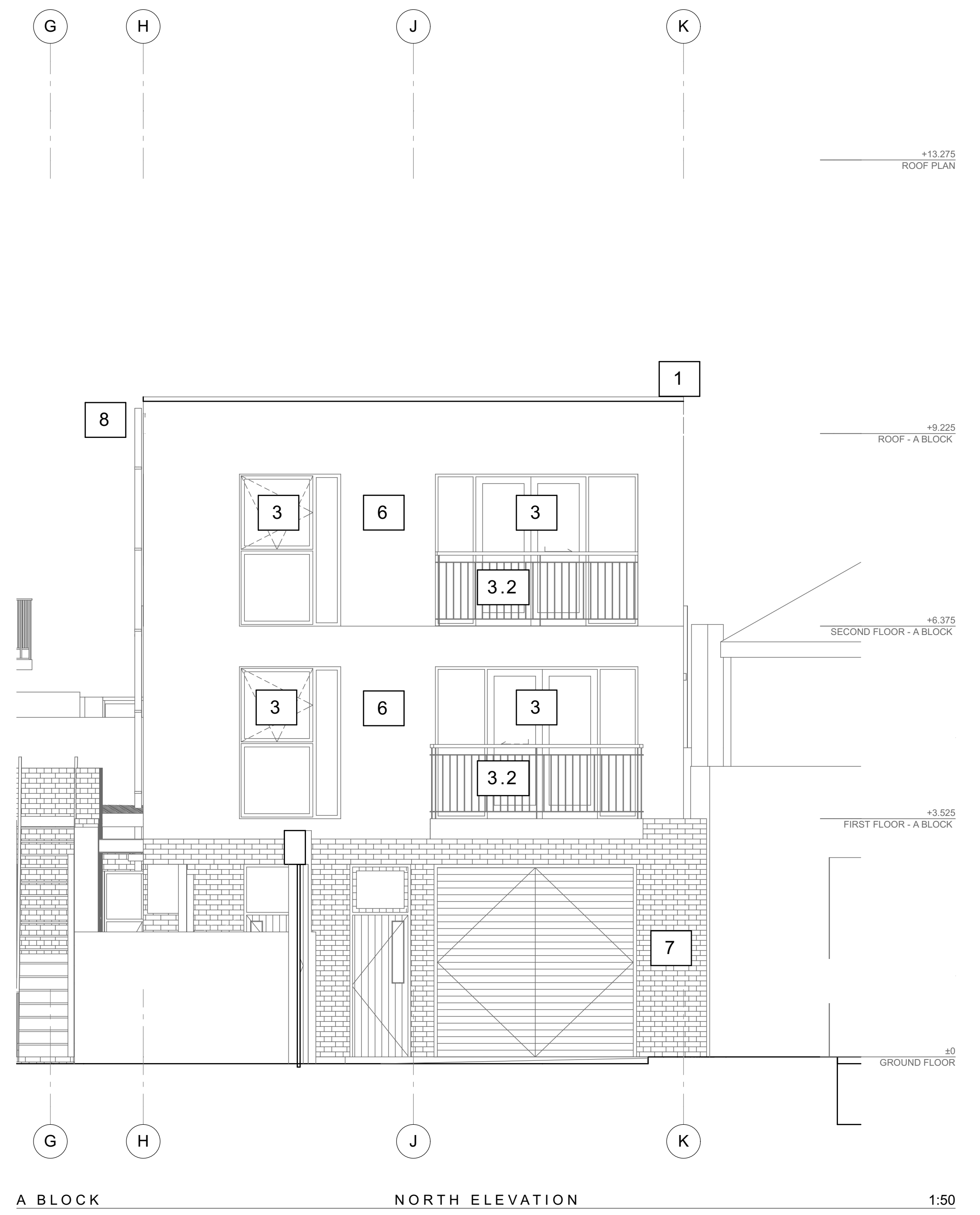
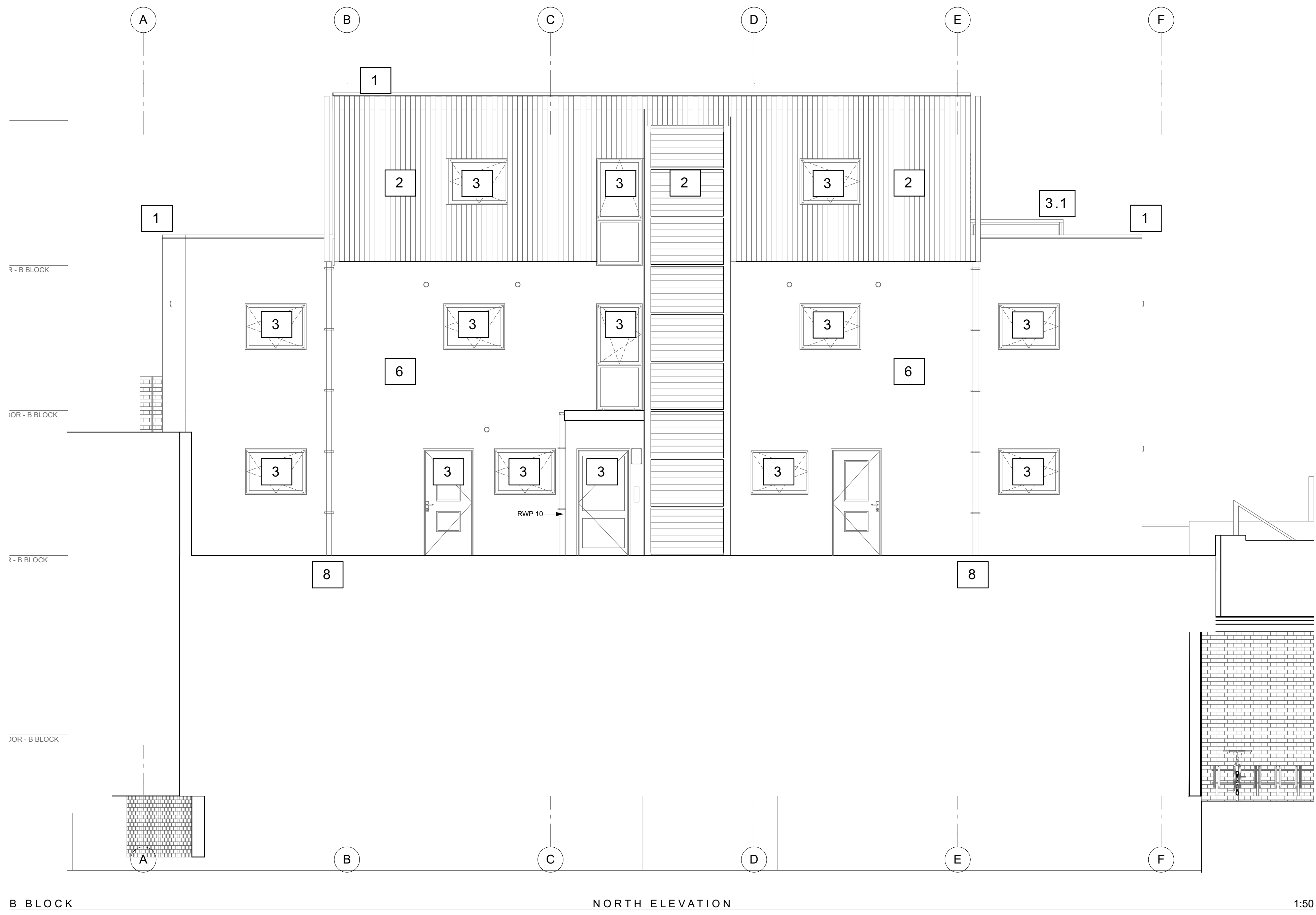


For PV'S refer drawing  
16/GA/850 PV from north  
elevation

NOT FOR CONSTRUCTION  
ONLY TO SHOW FINISHES



- 1.- Parapet coping profile
- 2.- Timber clad system
- 3.1.- Glass balustrade
- 3.2.- Metal balustrade
- 3.- Window/Door specification
- 6- Render system
- 7.- Brickwork
- 8.- Rain water good

**NOTES**  
All works to comply with current Building Regulations.  
Rev. A Revised PV's and Finishes

Drawing		FINISHES NORTH ELEVATIONS	
Job		3 Hampshire Street, London, NW5 2TE	
Job No.	Date	Drm	Chk
2013/016	10/11/2014	MW	GE
Scale		Drawing No.	
1:50@A1			
1:100@A3		016/GA/855	A