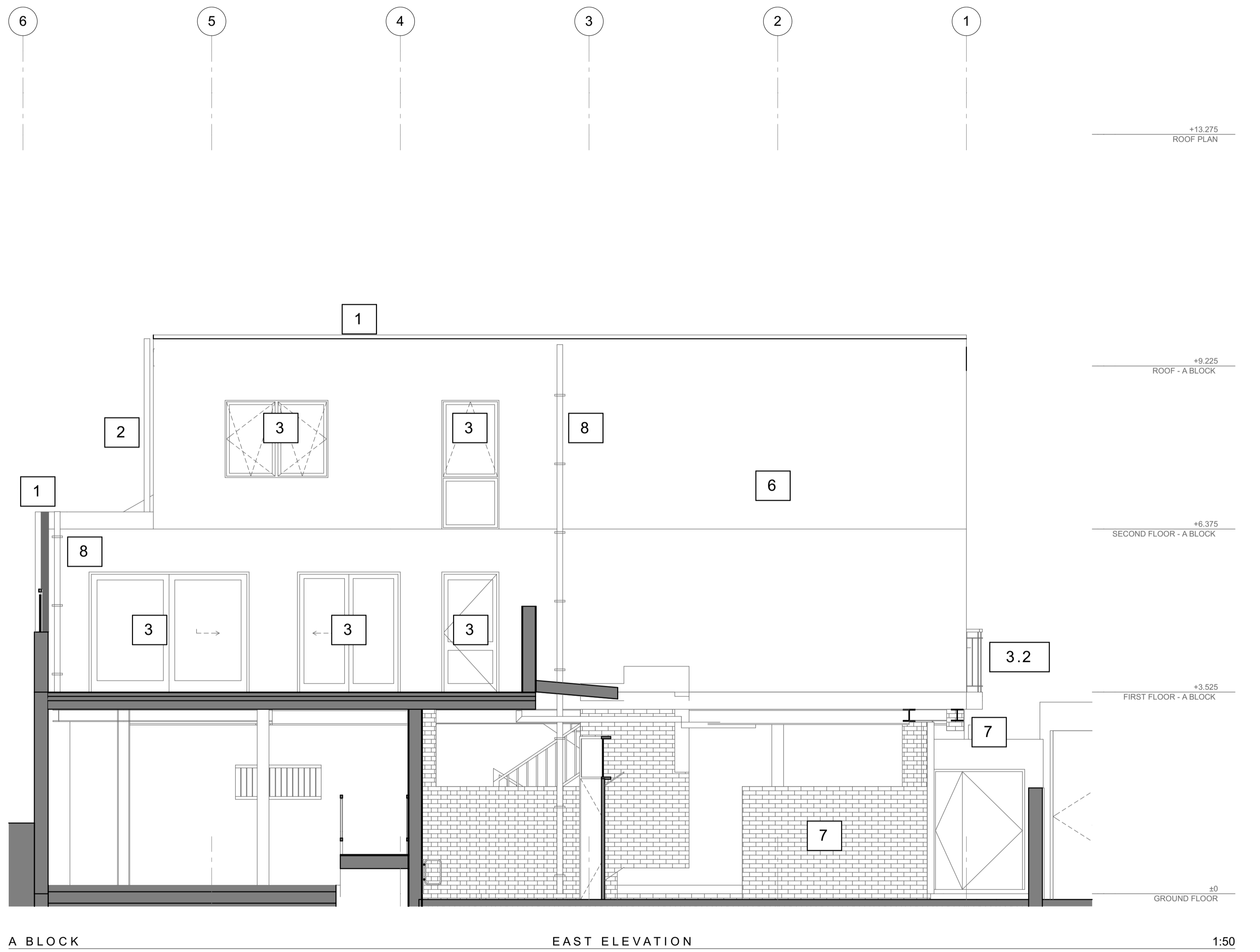
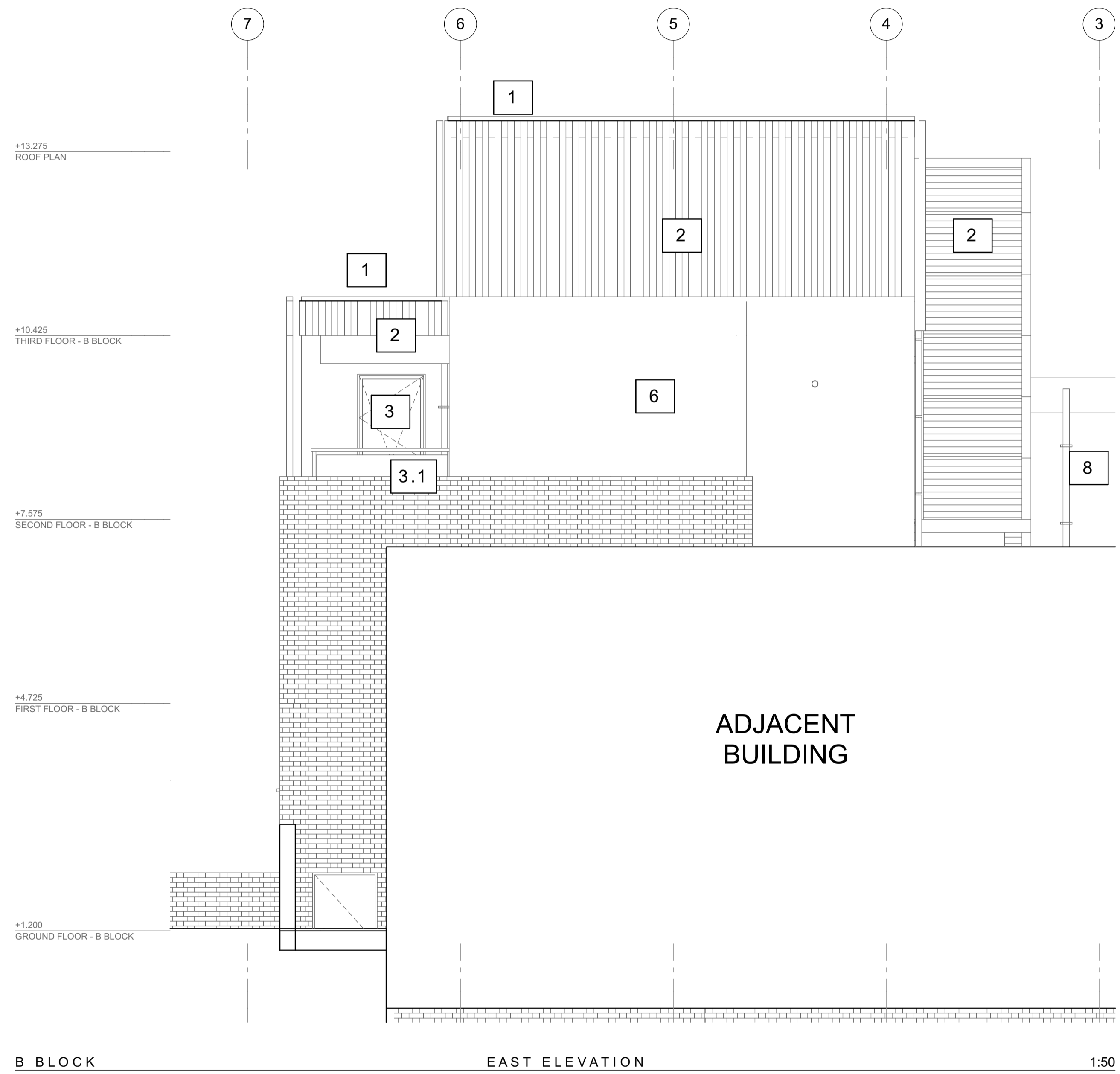


For PV'S refer drawing  
16/GA/851 PV from east  
elevation

NOT FOR CONSTRUCTION  
ONLY TO SHOW FINISHES



- 1.- Parapet coping profile
- 2.- Timber clad system
- 3.1.- Glass balustrade
- 3.2.- Metal balustrade
- 3.- Window/Door specification
- 6- Render system
- 7.- Brickwork
- 8.- Rain water good

**NOTES**  
All works to comply with current Building Regulations.  
Rev. A Revised PV's and Finishes

Drawing	FINISHES EAST ELEVATIONS		
Job	3 Hampshire Street, London, NW5 2TE		
Job No.	Date	Drm	Chk
2013/016	10/11/2014	MW	GE
Scale	Drawing No.	Revision	
1:50@ A1 1:100@ A3	016/GA/856	A	

