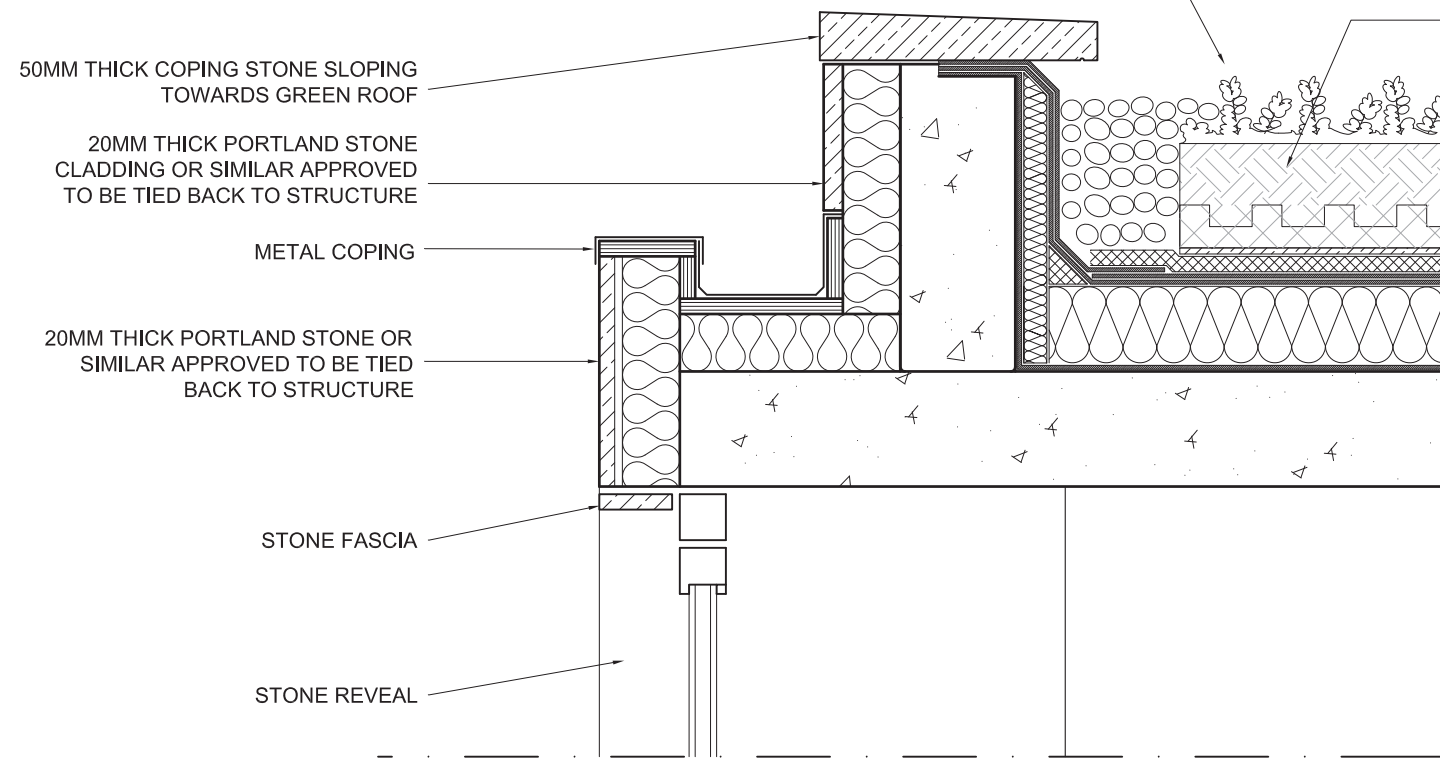


BAUDER XERO FLOR EXTENSIVE GREEN ROOF SYSTEMS ARE CONSTRUCTED USING A LOW MAINTENANCE SEDUM PLANTING (SUCCULENTS) THAT PROVIDE EXCELLENT COVER AND INCREASED PROTECTION TO THE WATERPROOFING SYSTEM. THE PLANTS ARE GROWN ON A 'BLANKET' THAT IS HARVESTED LIKE TURF AND INSTALLED BY ROLLING OUT ON TOP OF THE WATERPROOFING AND ANY OTHER LANDSCAPING COMPONENTS REQUIRED. THE BLANKETS ARE VERY LIGHTWEIGHT, EASY TO MAINTAIN AND PROVIDE INSTANT GREENING TO THE ROOF.

THE XERO FLOR SEDUM BLANKET IS A VERY VERSATILE, EXCEPTIONALLY LIGHTWEIGHT GREEN ROOF SYSTEM AND IS SUITABLE FOR BOTH NEW BUILD AND REFURBISHMENT PROJECTS.

IT SHOULD BE NOTED THAT EXTENSIVE GREEN ROOF SYSTEMS ARE NOT INTENDED FOR GENERAL ACCESS OR LEISURE PURPOSES AND ARE PRIMARILY USED FOR THEIR ECOLOGICAL BENEFITS OR AESTHETIC APPEARANCE.



BAUDER GREEN ROOF:

BAUDER XF301 SEDUM BLANKET
 OVER BAUDER SDF DRAINAGE MAT
 OVER BAUDER CAPPING SHEET
 OVER BAUDER UNDERLAYER
 OVER BAUDER PIR INSULATION
 OVER BAUDER VAPOUR BARRIER



PICTURE OF GREEN ROOF WITH SEDUM BLANKET

GREEN ROOF DETAIL
 - SECTION - SCALE 1:10

5 NUTLEY TERRACE
 LONDON NW3

GREEN ROOF DETAIL

DWG No.: 5NT/502

SCALE: 1:10@A3

DATE: AUGUST 2011

belsize
 architects

© COPYRIGHT
 NOT TO BE REPRODUCED OR USED
 WITHOUT PERMISSION

48 PARKHILL ROAD LONDON NW3 2YP
 TEL 020 7482 4420 FAX 020 7482 4186
 EMAIL: MAIL@BELSIZEARCHITECTS.COM