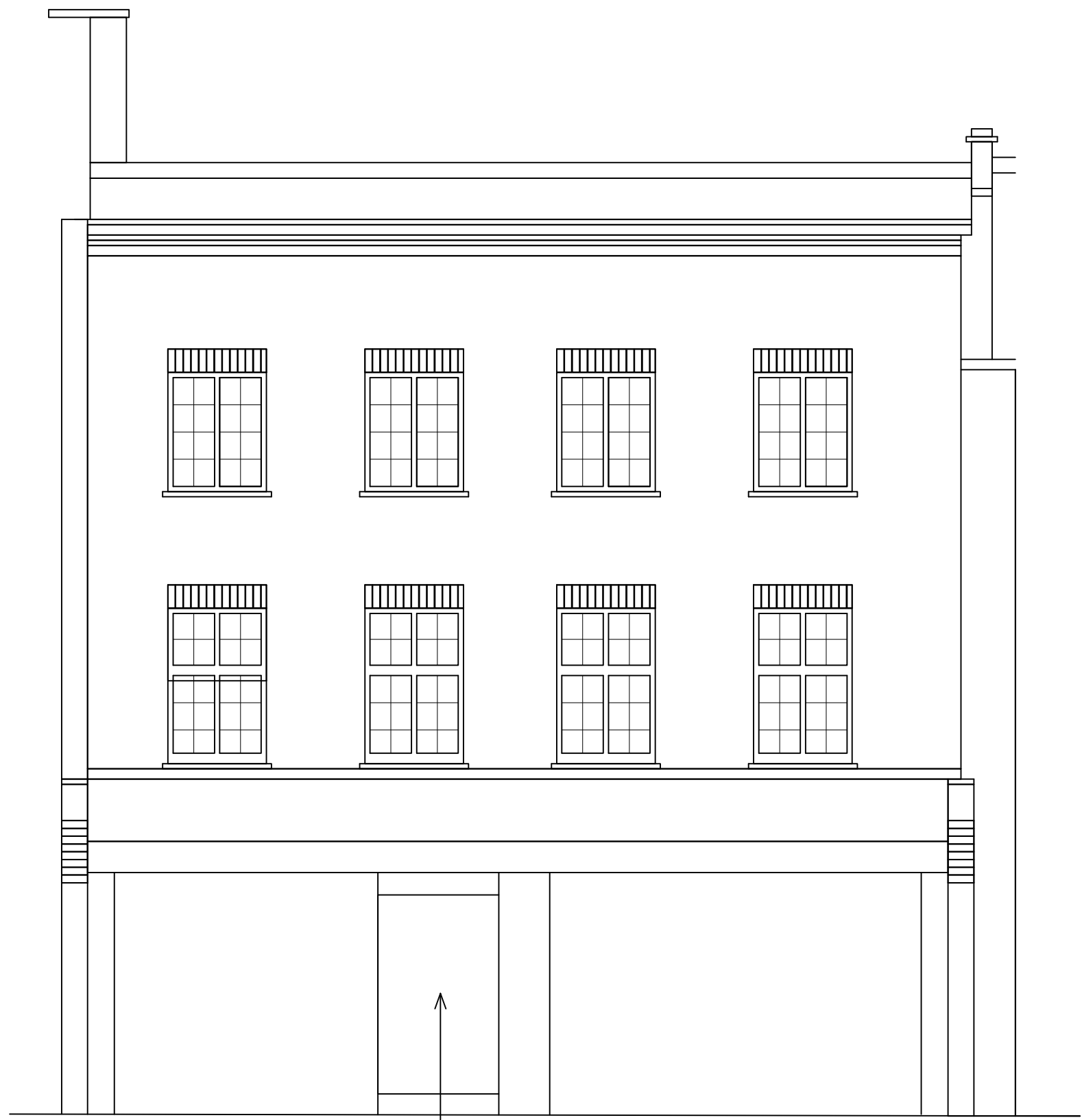


REVISION

A.	SECTION A-A ADDED.	29.07.13
B.	PROPOSED ELEVATION A AND SECTION A-A UPDATED.	09.12.13



FRONT



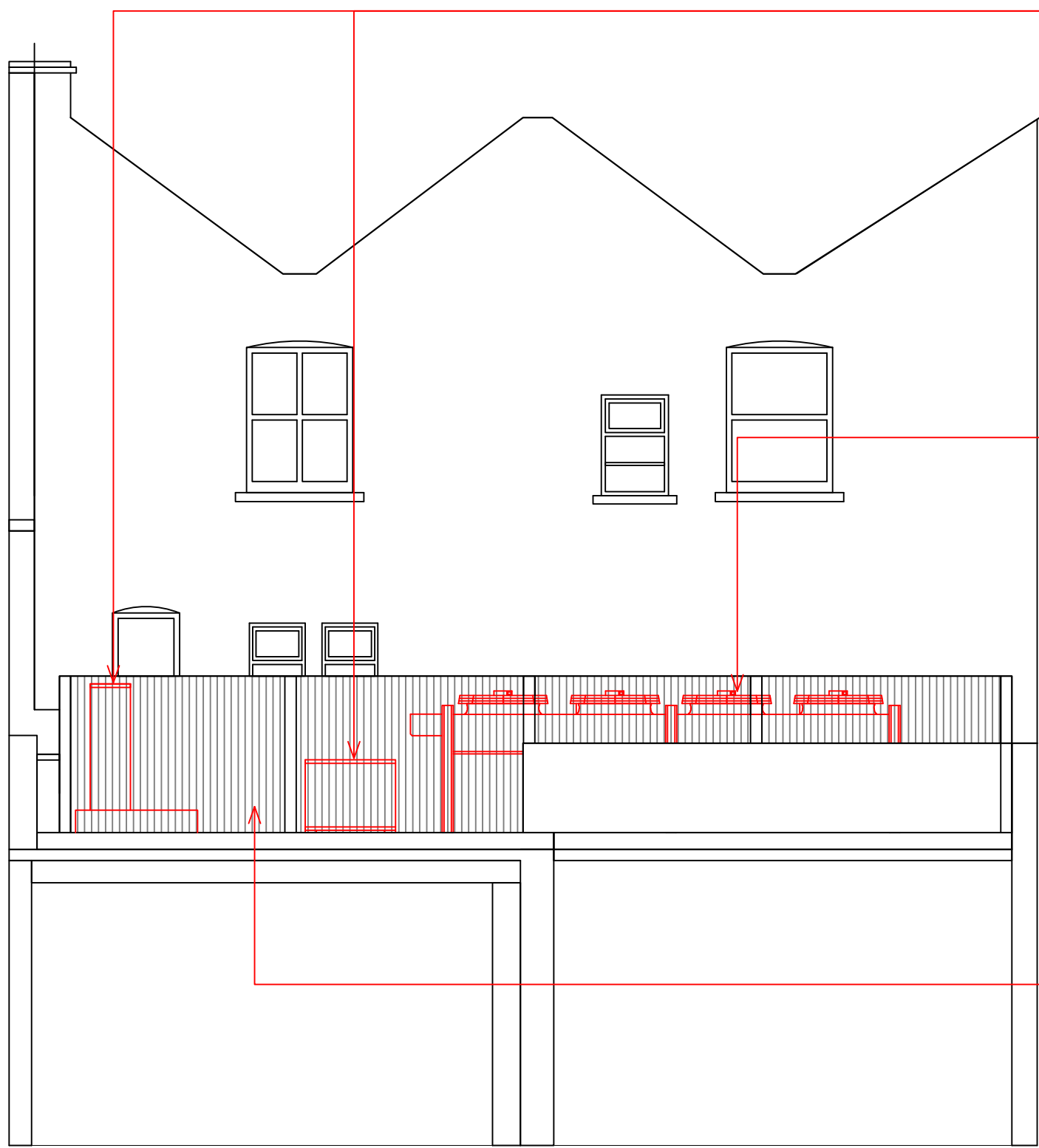
ELEVATION A

BOARDED OVER SHOPFRONT

EXISTING ELEVATIONS



FRONT (AS EXISTING)



ELEVATION A

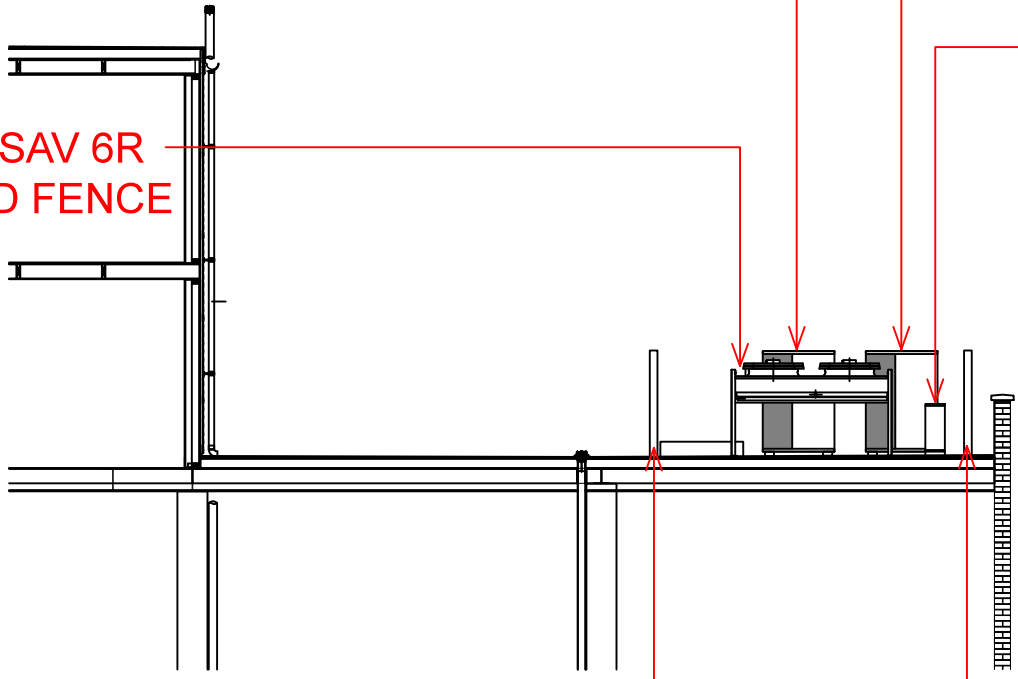
NEW MITSUBISHI PUHZ-ZRP35VKA  
& PUHZ-P200YHA3 AC UNITS BEHIND FENCE

NEW LU-VE SAV 6R  
UNIT BEHIND FENCE

NEW STAINED TIMBER FENCES  
WITH ACCESS GATE

NEW MITSUBISHI PUHZ-P200YHA3 AC UNITS  
Noise level: 39dB(A) at 10metres  
Unit switched off outside of store trading hours

NEW MITSUBISHI PUHZ-ZRP35VKA AC UNIT  
Noise level: 26dB(A) at 10 metres  
Unit switched off outside of store trading hours



SECTION A - A @ 1:100

**\*AS APPROVED\***

© THE CONTENTS OF THIS DRAWING REMAIN THE SOLE PROPERTY OF  
WELLSFIELD ASSOCIATES AND MUST NOT BE COPIED OR REPRODUCED  
WITHOUT PRIOR PERMISSION.

FULL SURVEY NOT CARRIED OUT, DRAWING PRODUCED USING  
INFORMATION SUPPLIED BY THE CLIENT

Wellsfield  
Associates

80 High Street,  
Hadleigh,  
Essex,  
SS7 2PB  
Tel: 01702 551123  
Fax: 01702 558530  
mail@wellsfieldassociates.co.uk

project

PROPOSED CO-OP SUPERMARKET  
72-74 PARKWAY  
CAMDEN  
LONDON

ELEVATIONS

date

MAR 13

drawn

DAR

scale

1:50@A1

drg no.

2160.03b

PROPOSED ELEVATIONS

SCALE 1:50

