

DESIGN & ACCESS STATEMENT

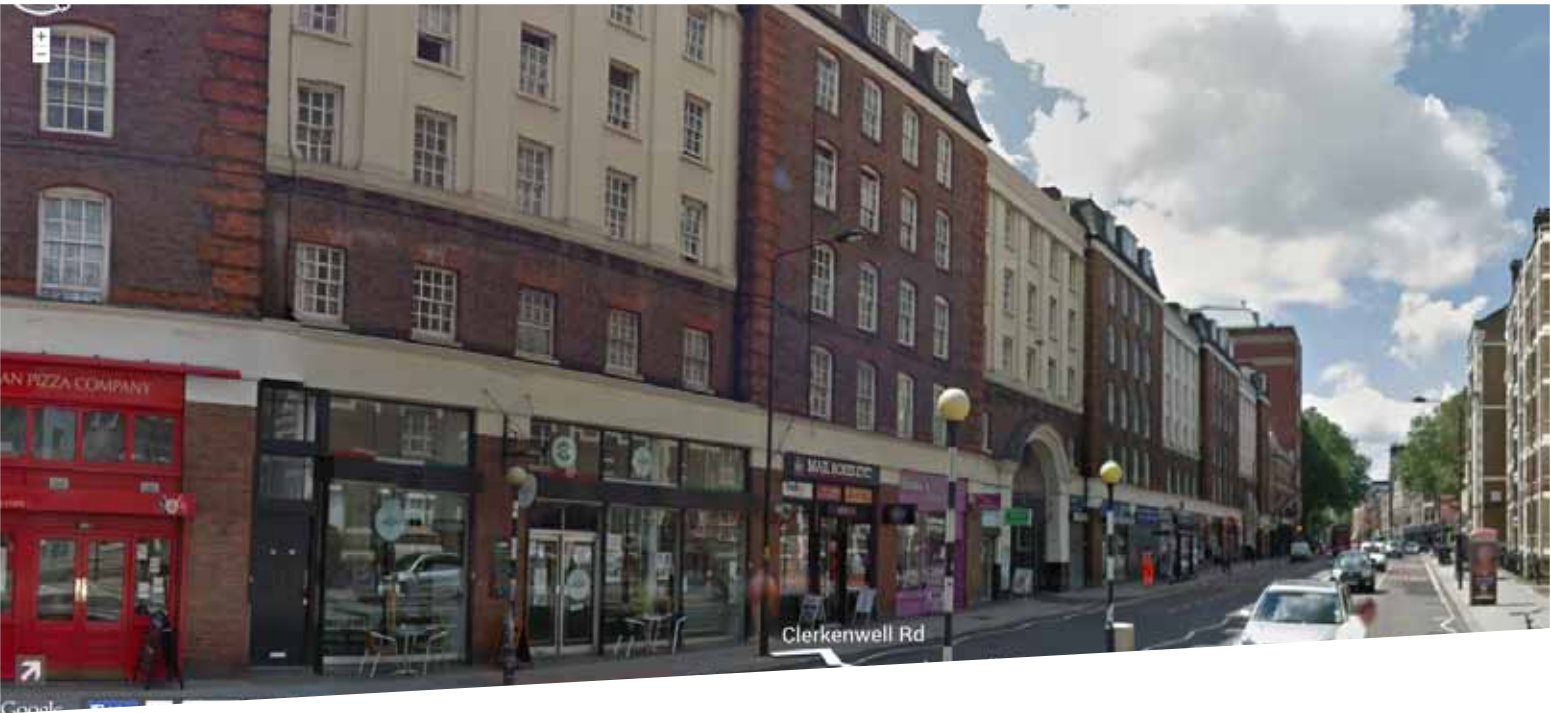
97-99 Clerkenwell Road London EC1R 5BX
Proposed Signage
November 2014



Site Location & Building History



Title Plan



Street View

HISTORY

County: Greater London Authority
District: Camden
District Type: London Borough
Grade: II
Date first listed: 11-Jan-1999

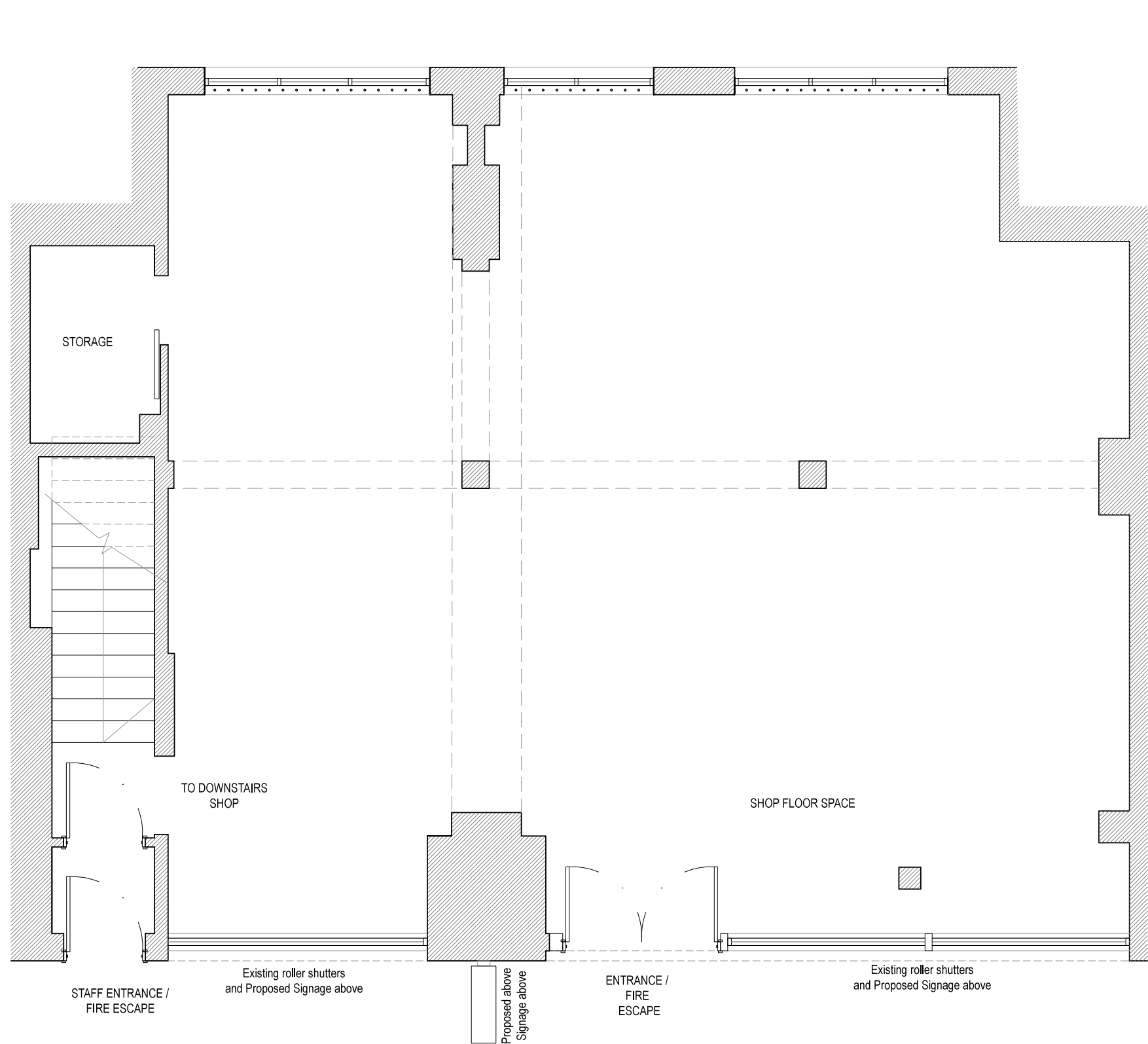
Housing estate for the London County Council. 1901-3. Designed by the LCC Architect's Department(chief assistant for scheme E H Parkes under W E Riley).

Elevations of red, orange and stock bricks with some blue and glazed bricks. Portions of upper elevations towards Clerkenwell Road and Portpool Road stuccoed. Brick chimneys, slated roofs. Stone string courses, parapets and segmental arches. Concrete open stairs and balconies with iron railings. Wooden sash and casement windows, some within segmental brick arches and with brick aprons.

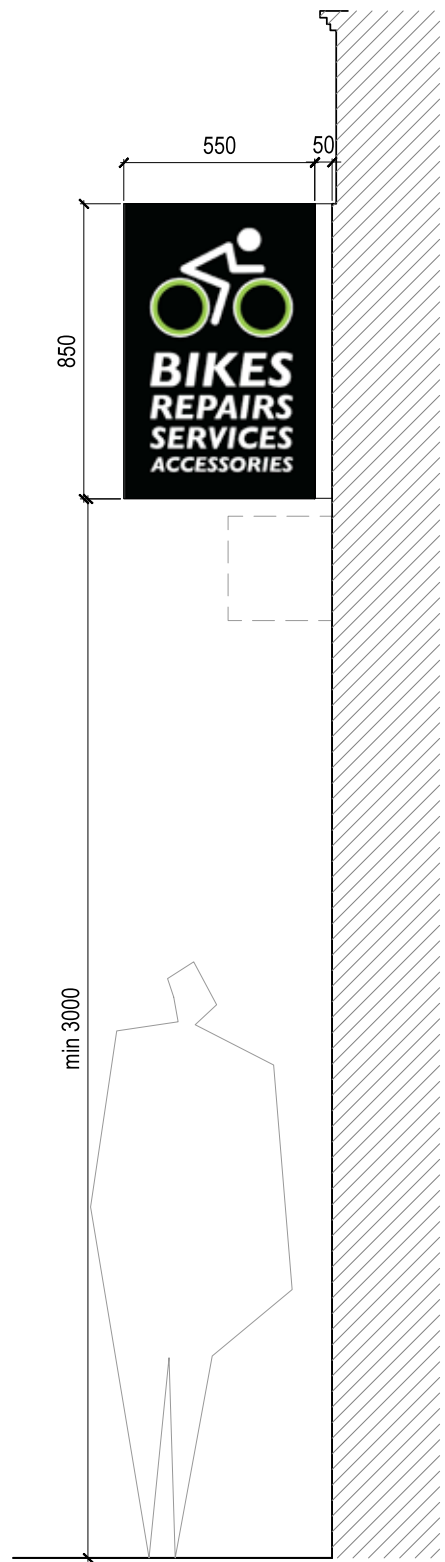
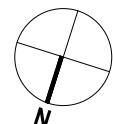
STYLE: free Classical style, with Arts and Crafts touches, developing the idiom established by the LCC Boundary Street and Millbank estates in a formal direction.

EXTERIOR: 5-storey flats with balcony access; some portions with sixth storey in roof. Enclosed layout, with 5 blocks in parallel on a north-south axis (Shene, Ledham, Skipwith, Denys, Frewell and Scrope Houses) and narrow quadrangles (once with formal planting) between Ledham and Skipwith Houses and between Denys and Frewell Houses. Long east-west blocks (Radcliff House and Redman House) to perimeter of estate, with broad arches leading through to centre of estate, their stuccoed upper storeys with giant pilasters. Some later alterations. Radcliff House: long elevation to Clerkenwell Road, shorter elevations in two sections to Leather Lane, and canted corner between with principal entrance arch to estate and pyramidally capped towers left and right. Ground storey towards roads have shops, with granite piers in between. Upper storeys towards Clerkenwell Road alternate between plain brick elevations with dormers in roof and slightly recessed stuccoed sections with giant pilasters rising through three storeys and parapet over. 3 broad moulded segmental arches lead through to centre of estate, the arch at the corner being more fully detailed with voussoirs and small brick windows over.

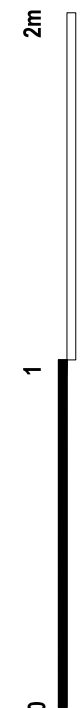
Existing Plans



2. Proposed Ground Floor Plan
Scale 1:50



2. Proposed Section
Scale 1:20



Proposes Ground Floor Plan an Section

Existing Frontage

Existing Photos



1.



2.



3.



4.

Proposed Signage



1. Proposed signage and lightbox



2. Proposed signage and lightbox

PROPOSED SIGNAGE

The Method

- 2no of signs, mechanically fixed, boxing of existing glazed fixed windows above the roller shutters
- External signage/light box mechanically fixed to existing external metal profile angle.

The Type

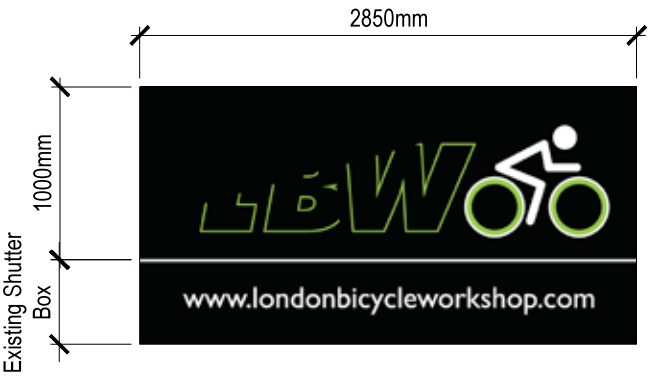
PVC Light box with black, white and green colours with 2no. fluorescent lights of 50watt each, internally lit.

The Size

Height 850mm
Width: 550mm



3. Proposed lightbox



3. Proposed signage and lightbox dimensions

