

↑
HT FROM
FLOOR 900 mm

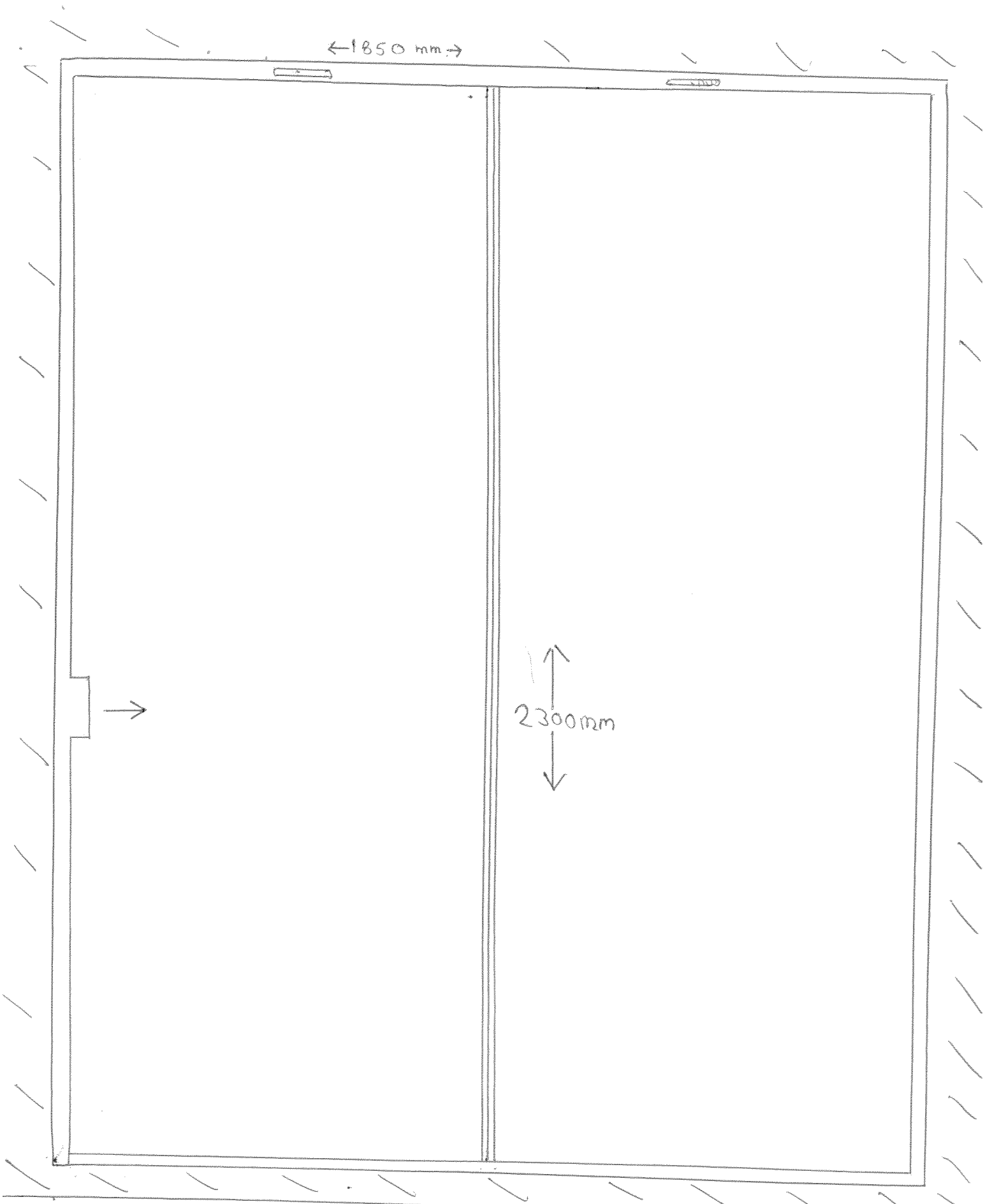
DR 1A 27/10/14

FIRST FLOOR EXTENSION WINDOW
Viewed from inside bedroom

↓
148 Gloucester Ave
NW1 8JA

Details reserved by condition required in planning
approval 2013/4935/P.

1 in 10



DR 2A 27/10/14

PATIO SLIDING DOOR

VIEWED FROM INSIDE KITCHEN

148 Gloucester Ave NW1 8JA

1/10/10

Details required in planning approval 2013/4935/P

SECTION 1 in 10

DR 3A 27/10/14

Details reserved by condition
Required in planning approval
2013/4935/P

OUTSIDE
ABOVE
REAR PATIO

Window one fixed
top pane
2 outward hinging windows

INSIDE
BED ROOM
(1st Floor)

↑
HEIGHT
ABOVE
PERMANENT
FLOOR
900mm
↓

148 Gloucester Av -
NW 8JA

DR 4A 27/10/14

1 in 10

PATIO SLIDING DOOR

SECTION

148 Gloucester Ave NW1 8JA

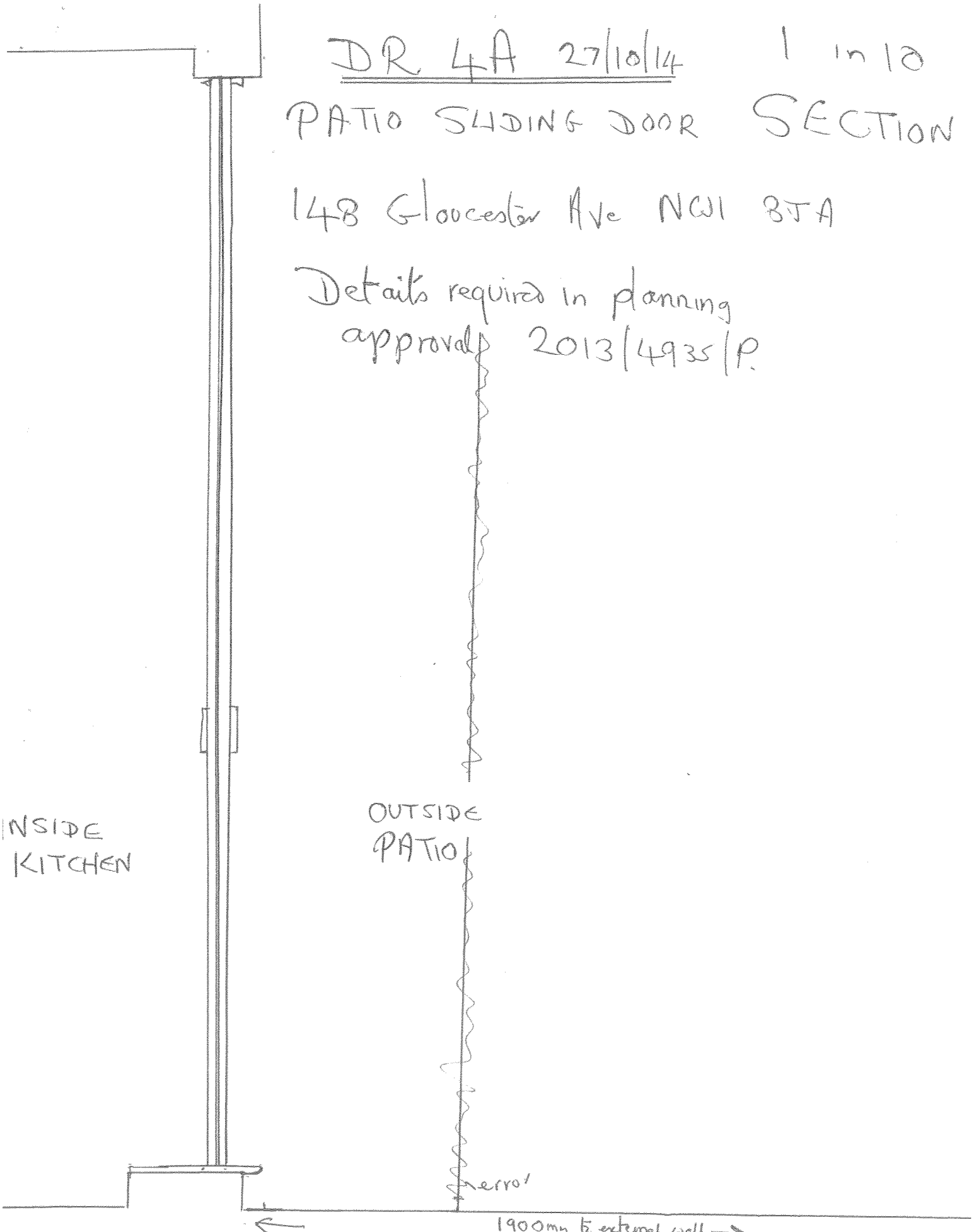
Details required in planning
approval 2013/4935/P

INSIDE
KITCHEN

OUTSIDE
PATIO

error

1900mm to external wall



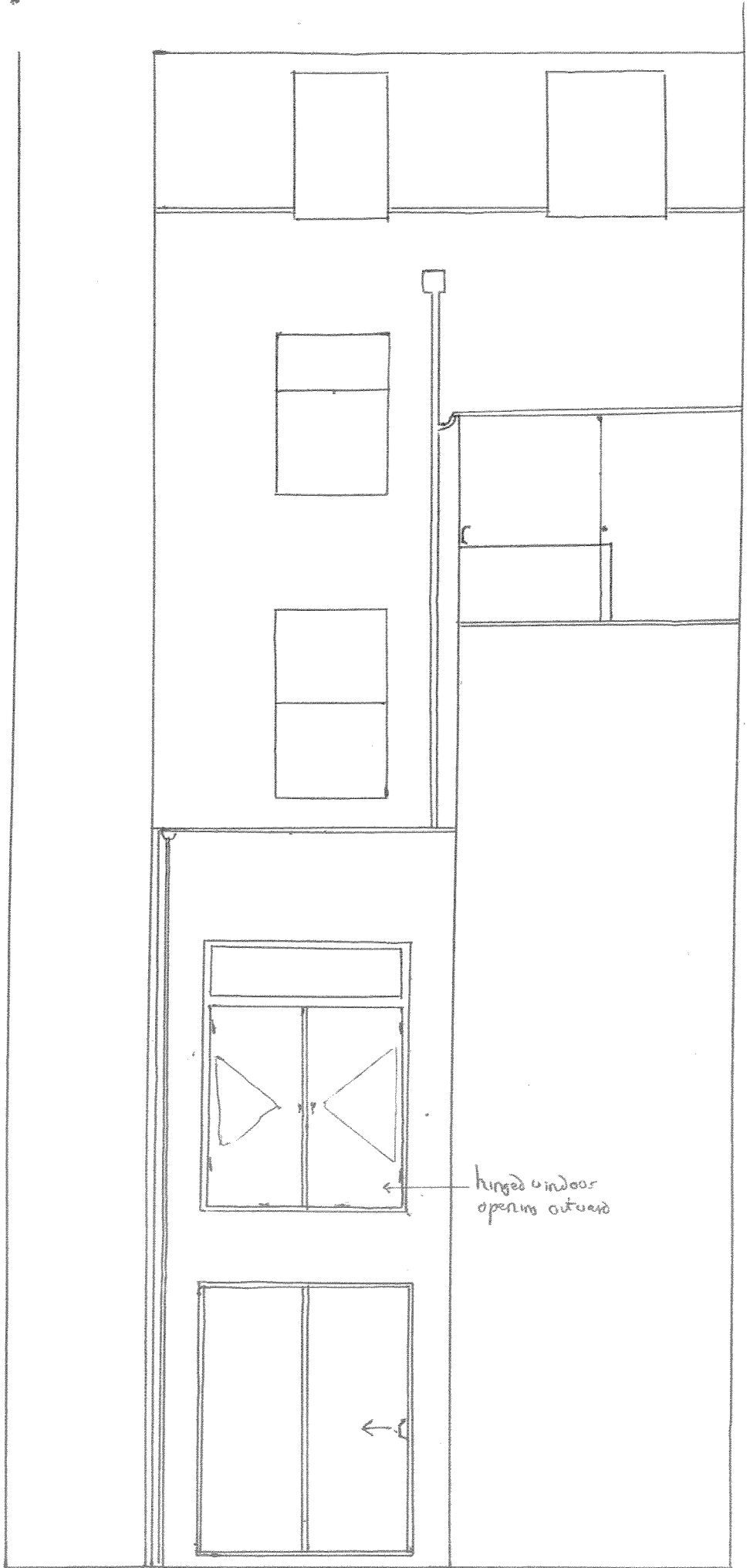
1 in 50 148 Gloucester Ave NW 1 STA

REAR ELEVATION

with proposed
Extension Window &
sliding Patio Door

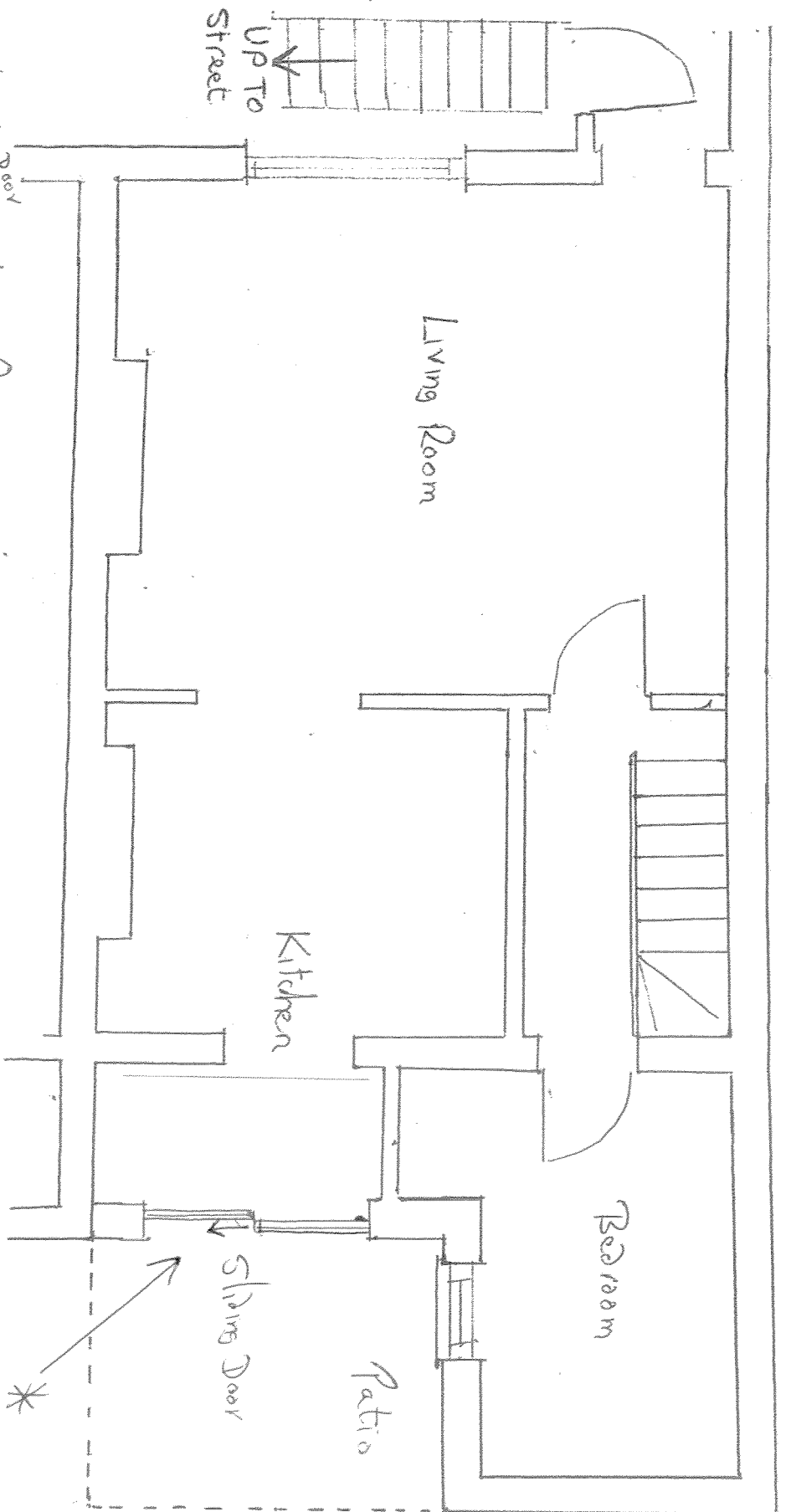
Details reserved
by condition
required in planning
approval 2013/4935/P

DR 5A 27/10/14



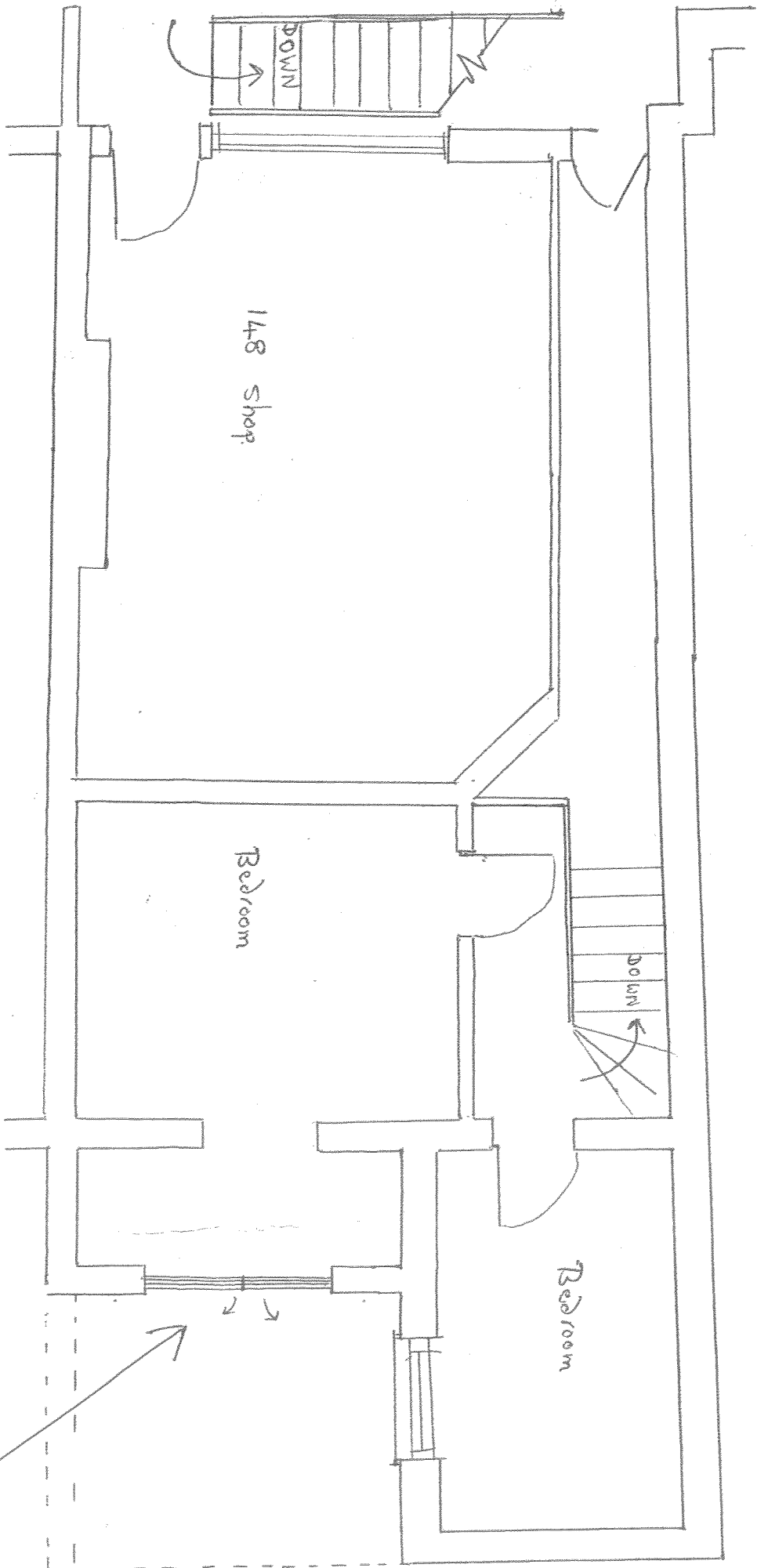
hinged window
opening outward

← 74 → ← 74 →



Resubmission
 * Details Required
 in planning approval
 2013/4935/P

27/10/14	A4
27/10/14	Scale 1:50
27/10/14	148 Gloucester Avenue, LONDON N11 8TA
DETAILED 6 AA PROPOSED	
LOWER LEVEL PLAN	
[BASEMENTS] 6 AA	



27/10/14	AP	Scale 1:50	148 Gloucester Avenue LONDON NW1 8SA
DATE	REVISED	PROPOSED	
8	8		
REVISED 8AA			
G-ROUND FLOOR PLAN			OR 8AA

→ To show Bedroom Window detail
 Reserved by condition required in planning
 approval 2013/4935/P

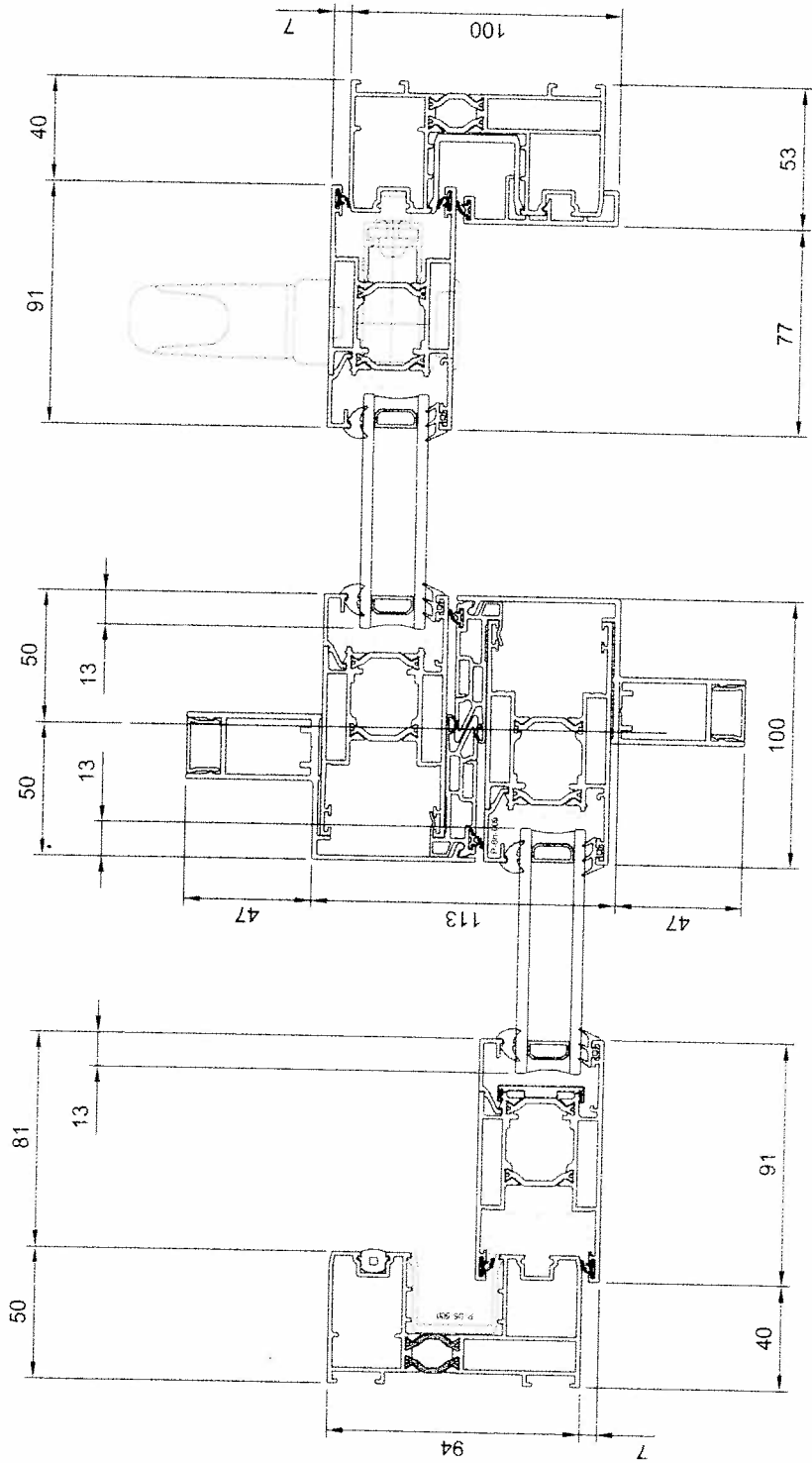
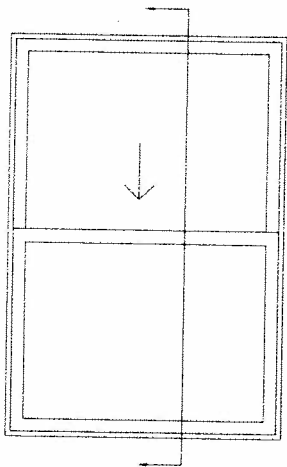
12.16 Aluminium Patio Door General Arrangements

Horizontal Sections

A

(2013/4935/P)

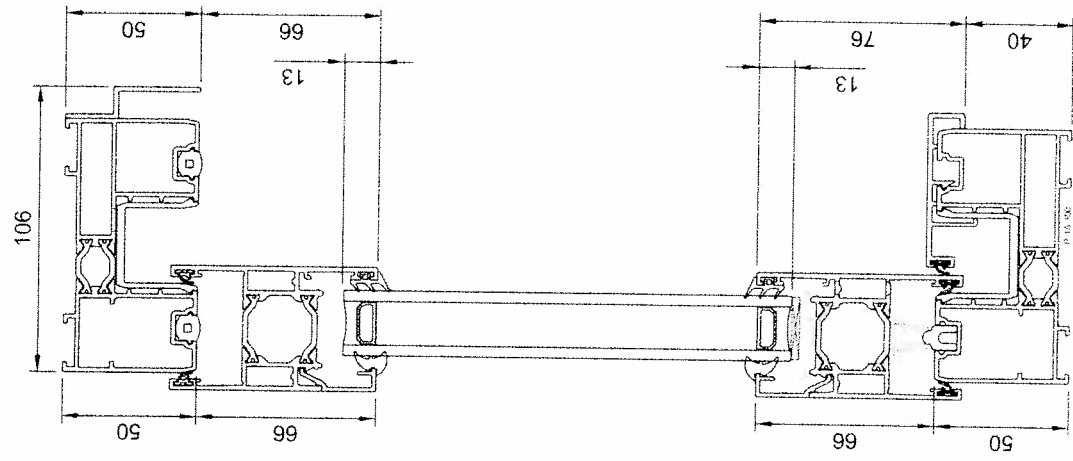
ALUMINIUM PRODUCTS



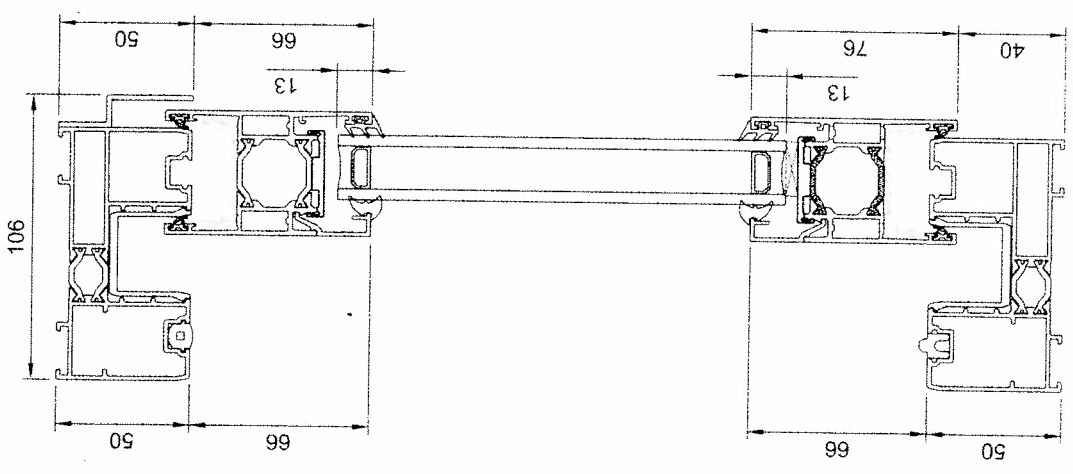
Vertical Sections

B
(2013/4935/P)

Moving Leaf
Section B - B



Fixed Leaf
Section A - A



2 Part Patio

