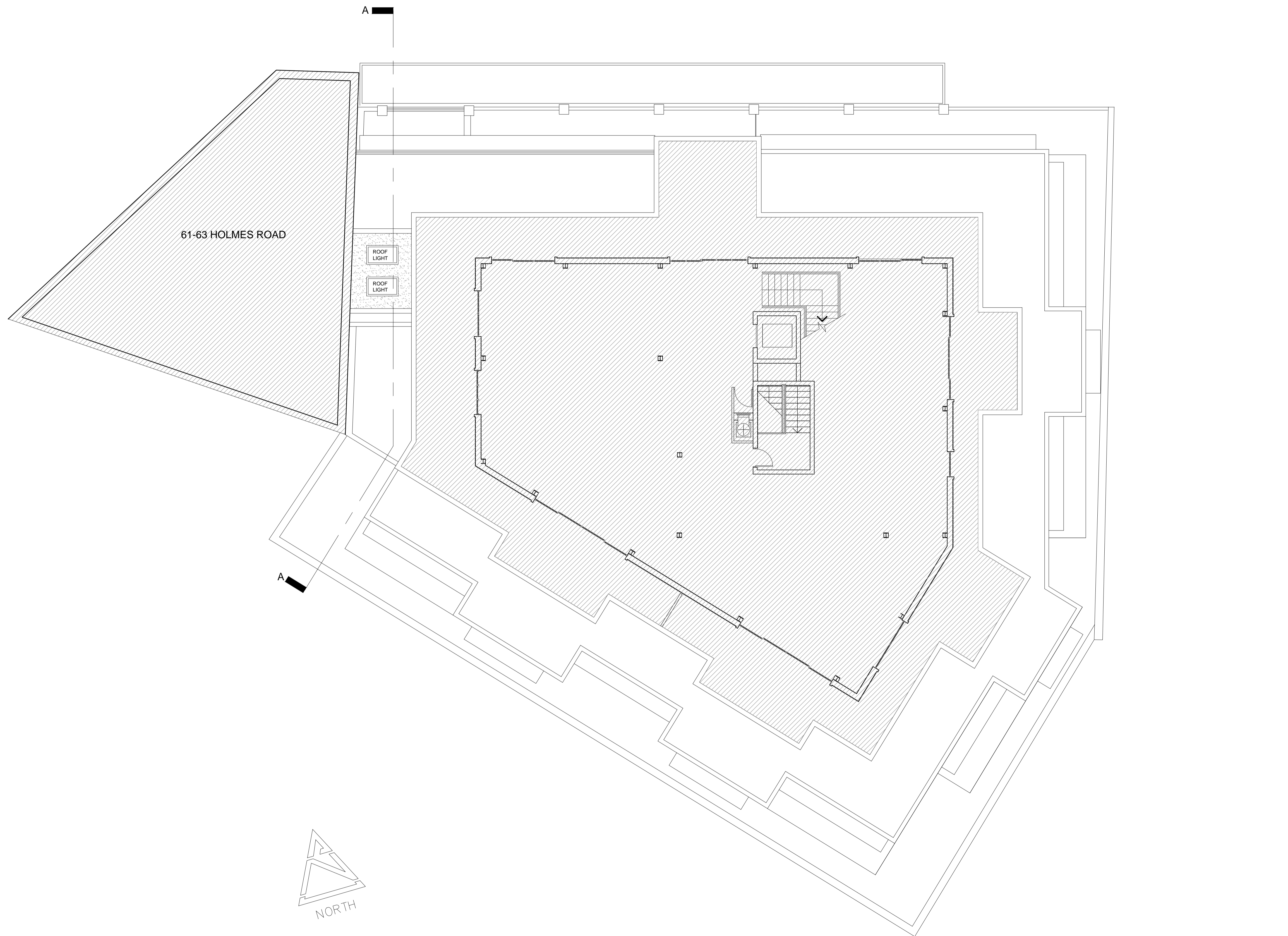


REVISIONS

Rev.	Date	By
Rev A	Nov 2014	CT

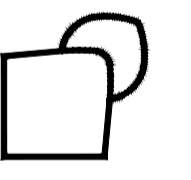
Rev A - Removal of 3rd floor south facing terrace and relocation of wall at 2nd floor level as per Camden Planning comments. Parapet level adjusted at 3rd floor.



PLANNING APPLICATION

ALL DIMENSIONS TO BE CHECKED ON SITE
 WORK TO FIGURED DIMENSIONS ONLY
 REPORT DISCREPANCIES TO THE ARCHITECT
 AT ONCE BEFORE PROCEEDING

Contemporary Design Solutions



46 Great Marlborough Street
 London
 W1F 7JW
 Telephone: 020 7494 9000 Fax: 020 7494 4944

Client

KENTISH TOWN DEVELOPMENTS

Project Title
 55 - 57 HOLMES ROAD
 EXTENSION TO FIRST FLOOR
 OFFICE AND SECOND / THIRD
 FLOOR RESIDENTIAL UNITS

Drawing Title

PROPOSED FOURTH FLOOR PLAN

Scale	1: 100@A1	Date	APRIL 2014
Drawn	CT	Checked	DL
Drawing No.		Rev.	

140300-A(GA)140 A

CAD plot date: 05 Nov 2014 - 05:23pm