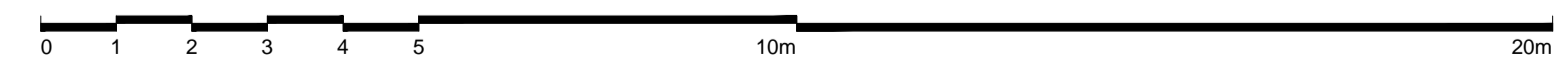
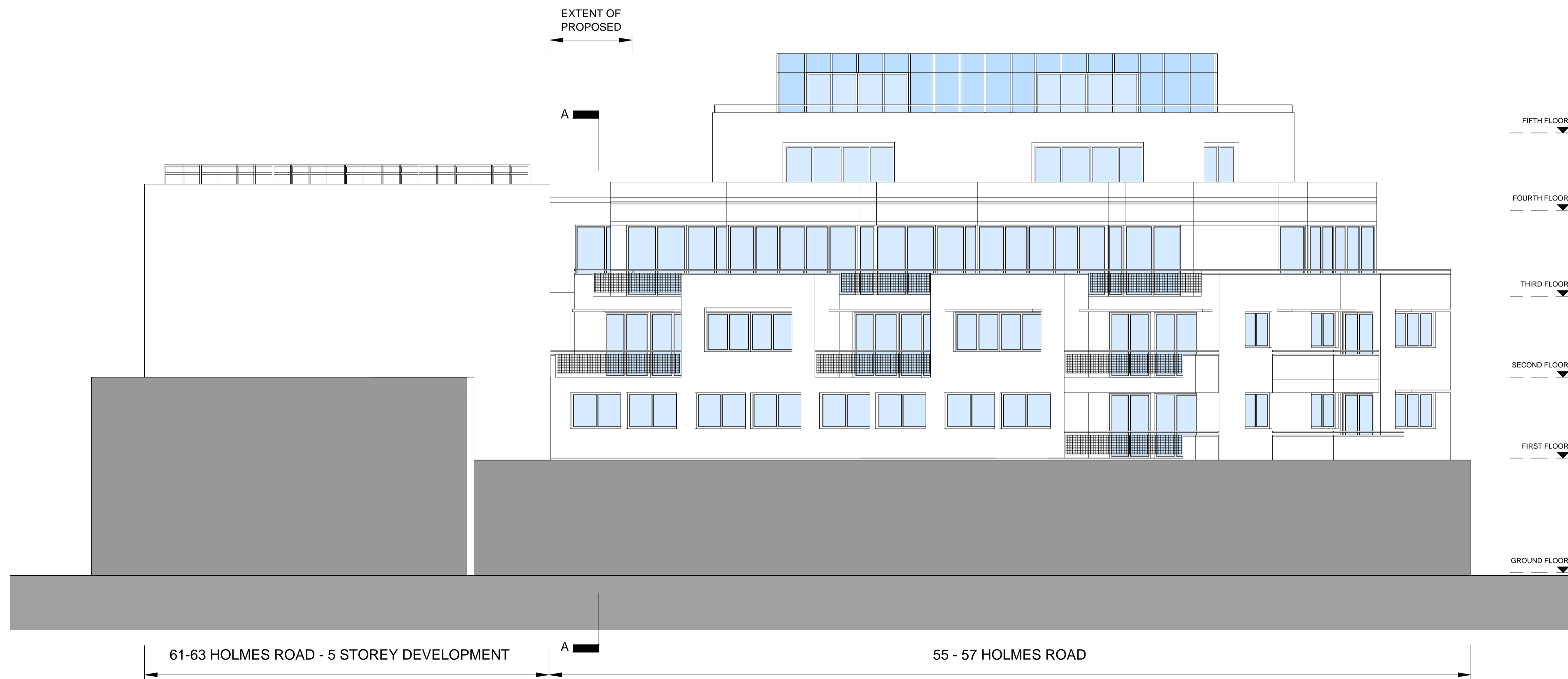
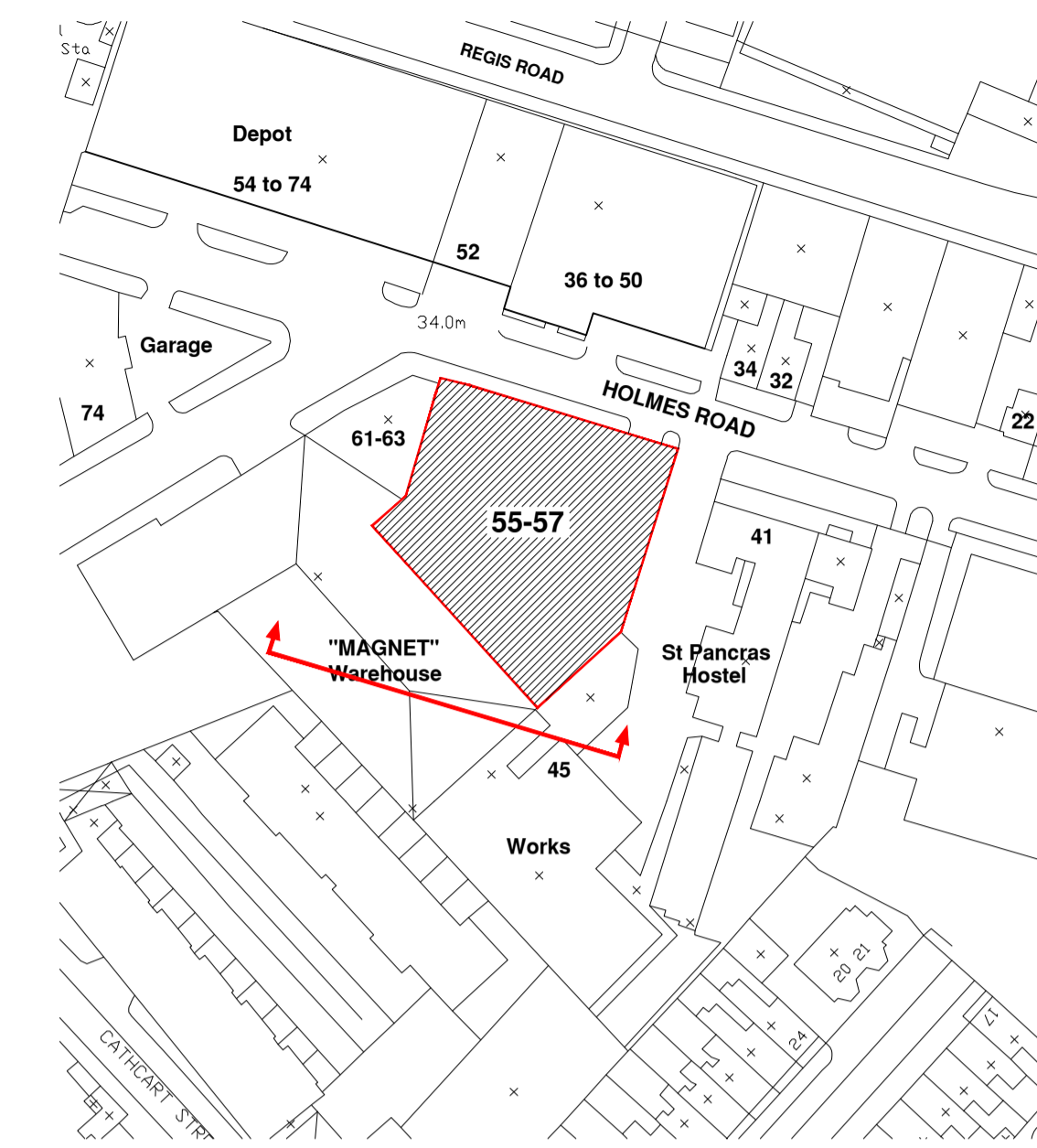


REVISIONS

Rev.	Date	By
Rev A	Nov 2014	CT

Rev A - Removal of 3rd floor south facing terrace and relocation of wall at 2nd floor level as per Camden Planning comments. Parapet level adjusted at 3rd floor.



PLANNING APPLICATION

ALL DIMENSIONS TO BE CHECKED ON SITE  
WORK TO FIGURED DIMENSIONS ONLY  
REPORT DISCREPANCIES TO THE ARCHITECT  
AT ONCE BEFORE PROCEEDING

Contemporary Design Solutions



46 Great Marlborough Street  
London  
W1F 7JW

Telephone: 020 7494 9000 Fax: 020 7494 4944

Client

KENTISH TOWN DEVELOPMENTS

Project Title  
55 - 57 HOLMES ROAD  
EXTENSION TO FIRST FLOOR  
OFFICE AND SECOND / THIRD  
FLOOR RESIDENTIAL UNITS

Drawing Title

PROPOSED SOUTH ELEVATION

Scale: 1: 100@A1 Date: APRIL 2014

Drawn	CT	Checked	DL
Drawing No.		Rev.	

140300-A(GA)401 A

CAD plot date: 05 Nov 2014 - 05:15pm