

Second Floor, 9 Kingscroft Road

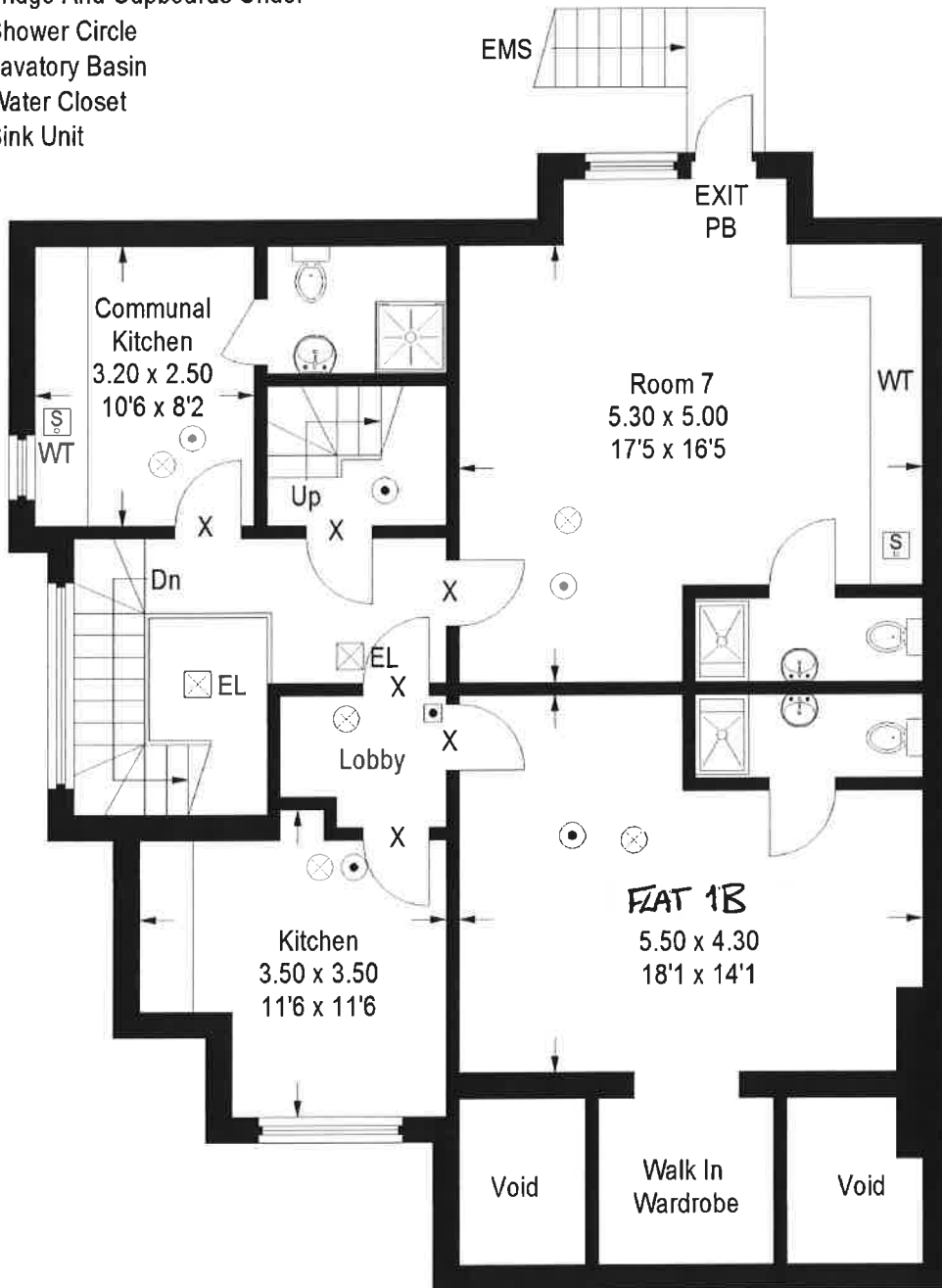
Approximate Gross Internal Area

97.9 sq m / 1054 sq ft

(Excluding Void)

Keys

- ⊙ Fire Alarm
- ⊗ Smoke Detector
- ⊠ Break In Case Offire Panic Bolt
- ⊠ EL Emergency Light
- EXIT Fire Exit Sign
- X Half Hour Fire Check Doors
- XPB Fire Exit Door With Push Bar Bolt
- Fire Alarm Control Panel
- EMS Emergency Fire Exit Metal Stairs
- WT Work Top With Sink, Washing Machine
Fridge And Cupboards Under
- SH Shower Circle
- LB Lavatory Basin
- WC Water Closet
- Ⓢ Sink Unit



Second Floor

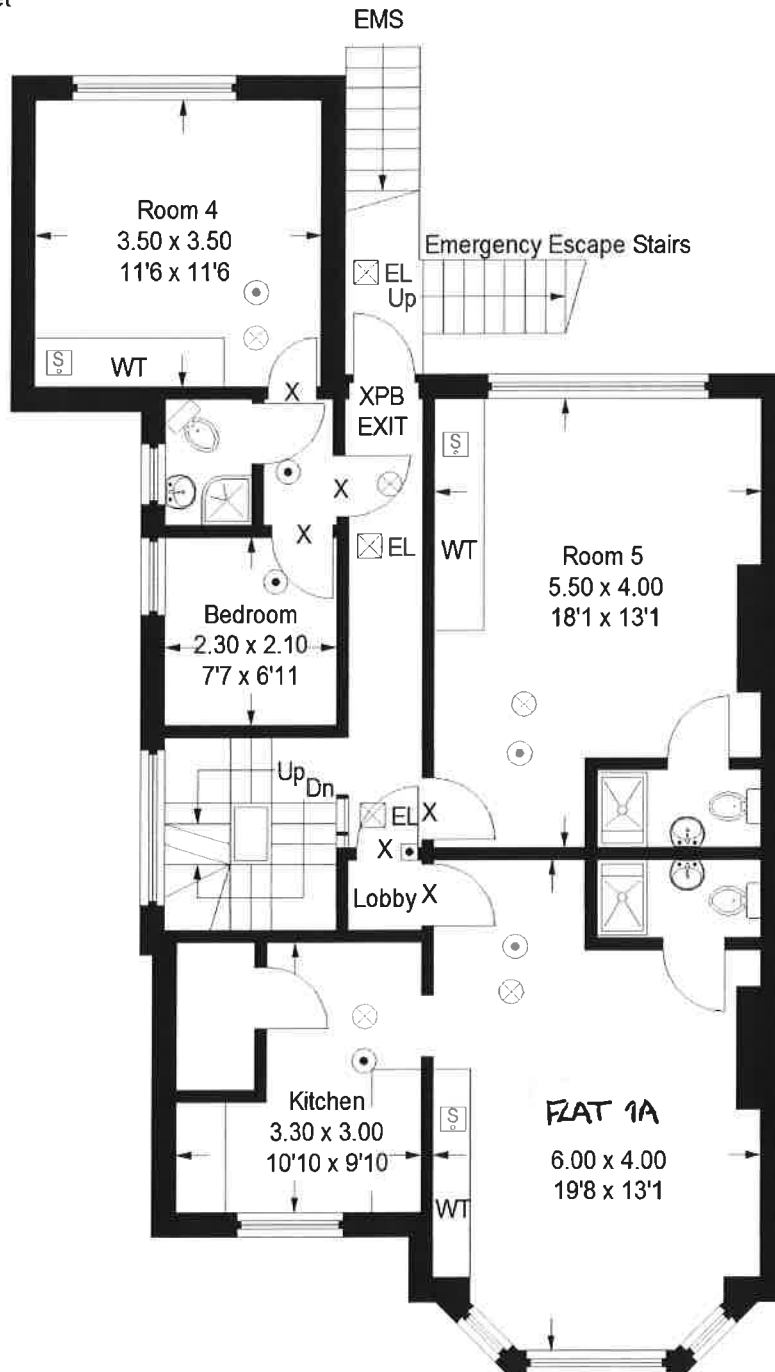
Illustration for identification purposes only, measurements are approximate, not to scale.

First Floor, 9 Kingscroft Road

Approximate Gross Internal Area
90.5 sq m / 974 sq ft

Keys

- Fire Alarm
- ⊗ Smoke Detector
- Break In Case Offire Panic Bolt
- ⊠ EL Emergency Light
- EXIT Fire Exit Sign
- X Half Hour Fire Check Doors
- XPB Fire Exit Door With Push Bar Bolt
- Fire Alarm Control Panel
- EMS Emergency Fire Exit Metal Stairs
- WT Work Top With Sink, Washing Machine
Fridge And Cupboards Under
- SH Shower Circle
- LB Lavatory Basin
- WC Water Closet
- Ⓢ Sink Unit



First Floor

Illustration for identification purposes only, measurements are approximate, not to scale.