

DESIGN & ACCESS STATEMENT

138 – 158 EVERSOLT STREET AND 1-3
ALDENHAM STREET, INCLUDING IRENE BARCLAY
HOUSE NW1



WINDOW REPLACEMENTS

For

Origin Housing

CONTENTS

	Page no.
INTRODUCTION	3
SITE ANALYSIS AND EVALUATION	3
ACCESS AND TRANSPORT	4
PLANNING	4
PROPOSALS	4
SUSTAINABILITY	7
IMPACT STATEMENT/ CONCLUSION	7

**THIS REPORT IS TO BE READ IN CONJUNCTION WITH ARCHITECTS DRAWINGS:
(not in this document – issued separately)**

3651/PL 00 SITE LOCATION PLAN
3651/PL 01 EXISTING ELEVATIONS
3651/PL 02 EXISTING WINDOW SCHEDULE
3651/PL 03 PROPOSED ELEVATIONS
3651/PL 04 PROPOSED WINDOW SCHEDULE
3651/PL 07 TYPICAL WINDOW SECTIONS

INTRODUCTION

This design and access statement is in support of a planning application for the replacement windows of 138 – 158 Eversholt Street and 1-3 Aldenham Street, including Irene Barclay House.

All these properties are owned by social housing landlord Origin Housing.

It should be read along with drawings:

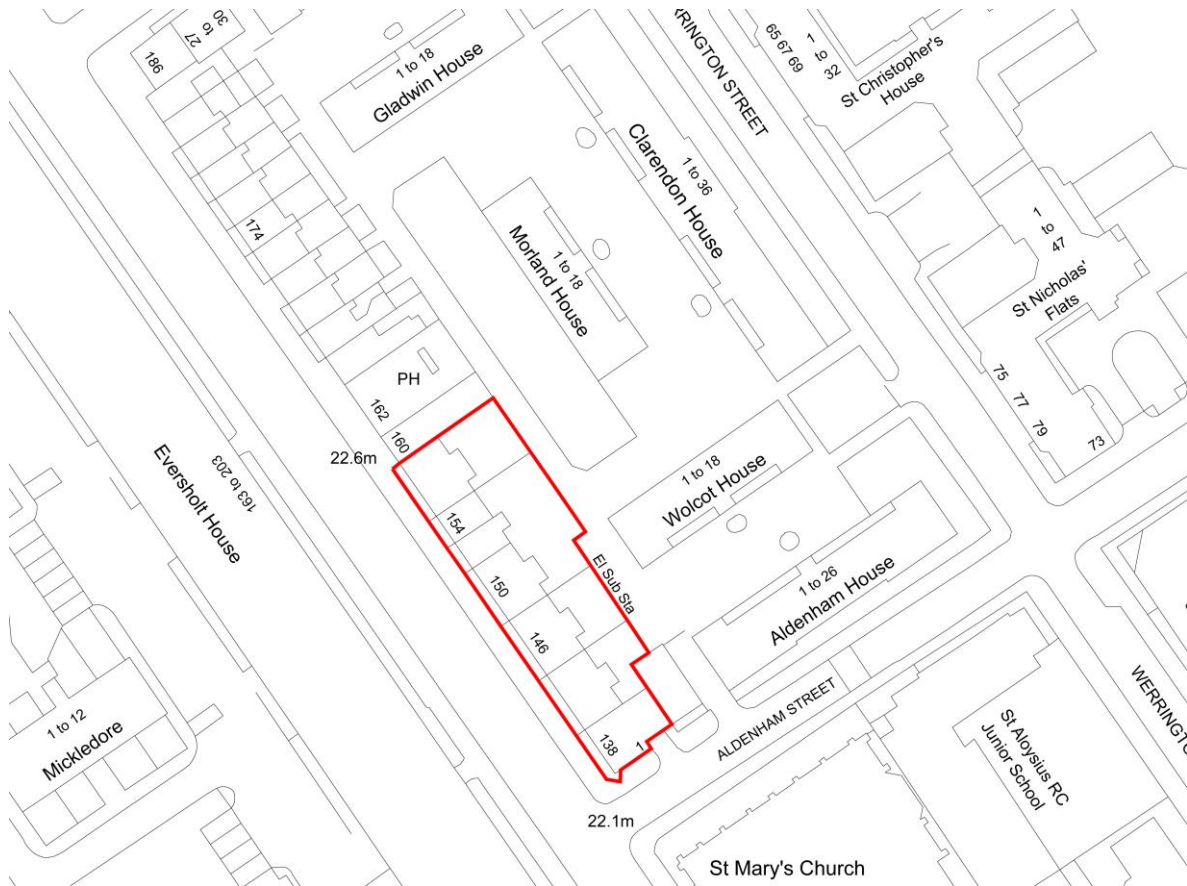
3651/PL00, 3651/PL01, 3651/PL02, 3651/PL03, 3651/PL04, 3651/PL07.

SITE ANALYSIS AND EVALUATION

The application site is a 3 storey (plus basement) terrace of flats fronting onto Eversholt street and turning the corner into Aldenham Street.



The site is located just to the North of London Euston Rail Station and Euston Underground Station and has good transport access links.



PLANNING

The site is designated as residential, so no issues of change of use arise. The site is not in a Conservation Area nor does it contain any listed buildings.

PROPOSALS

Origin Housing Association have identified the buildings within this planning application as suitable candidates to upgrade the thermal performance of the structure to help reduce fuel poverty within their estate.

The existing windows are a mixture of single glazed timber sash windows and single glazed steel Crittal windows which provide very poor heat efficiency and are prone to condensation and mould growth.

The proposals illustrate the replacement of the existing single glazed timber sash windows with double glazed timber sash windows to match the existing. This will ensure that the character of the existing building is retained. The existing steel Crittal casement windows are to be replaced with double glazed timber casement windows.

Some windows on some of the properties have been previously replaced with double glazed uPVC windows. These are to be replaced with double glazed timber windows to match the adjacent properties.

Single glazed timber sash and steel Crittal casement windows are very poor at conserving energy. The heat loss through single glazing which has a U-Value of 5.8 is around 70%. This makes heating the residential dwellings expensive as there is a continual 70% heat loss through the glass. The double glazing will help reduce heat loss by at least 50% and help reduce draughts by around 80% helping to reduce fuel poverty and improve the living conditions of the tenants.

The new windows will provide improved insulation levels that comply with Part L of the Building Regulations for improved thermal insulation. The new frames have enhanced u-values, double glazing and are 100% recyclable. The frames and window locks to be installed will comply with secure by design standards and provide additional security for the tenants.

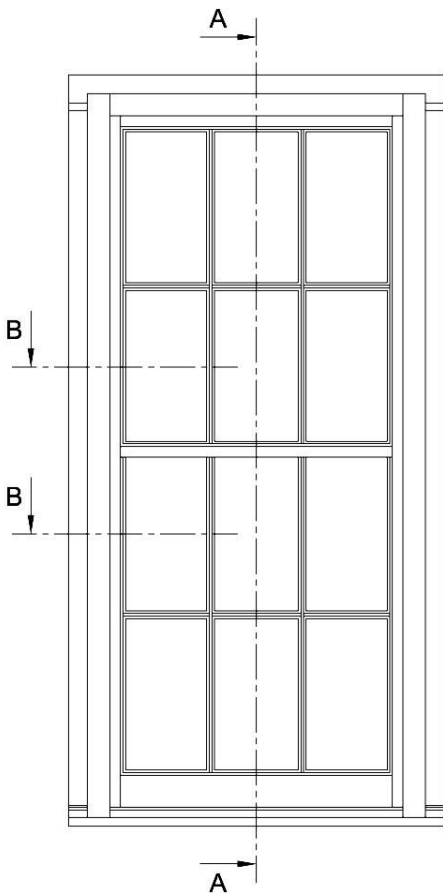
The double glazed unit is slim line allowing the new window to be the same size as the single glazed windows and the additional pane

will help reduce condensation and heat loss from the properties.

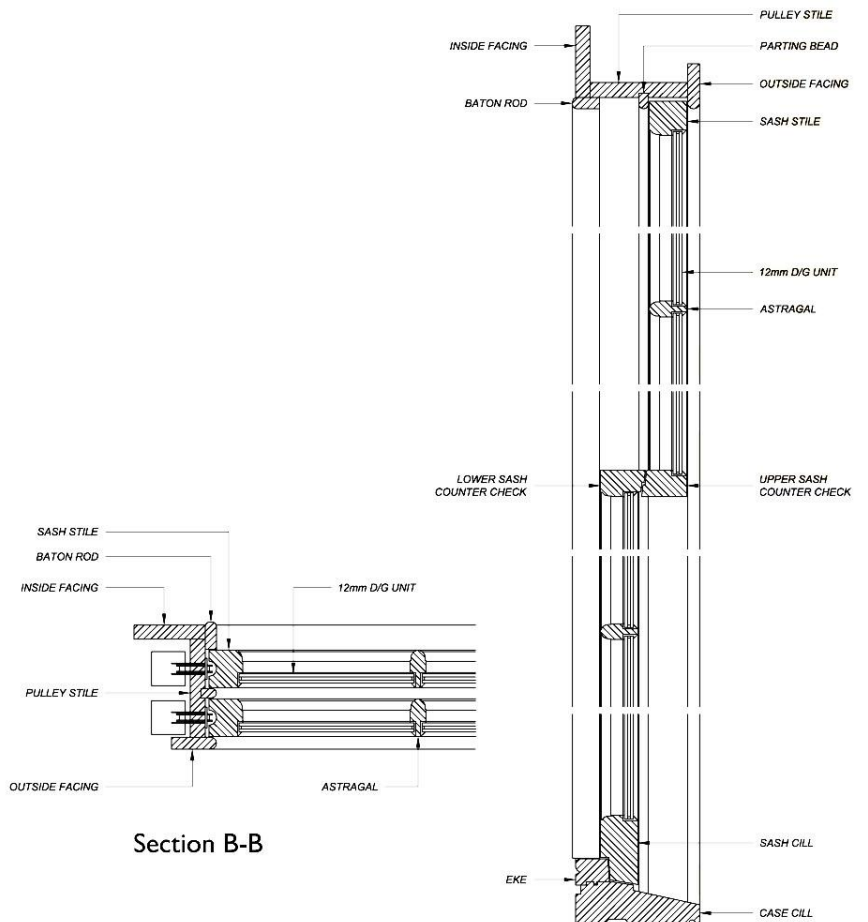
The window fenestration has been replicated on the main front facade of the property and on the rear elevation.

PROPOSED WINDOWS

Note glazing bars will match existing
 – see elevation drawings



Elevation



Section B-B

Section A-A

SUSTAINABILITY

Energy

The new windows will be thermally efficient helping improve the insulation values within each flat.

Materials

The new works will use materials and construction types which match the existing building.

Waste

Construction waste: during construction the Contractor will be required to implement a plan for the effective re-use or recycling of construction waste.

Management

The contractor selected to carry out construction will be required to adopt a Considerate Constructors scheme.

IMPACT STATEMENT/CONCLUSION

This improvement in the living conditions of the tenants is an important contribution to the reduction of fuel poverty. The replacement of the windows will improve the energy rating, security and fire escape provision within the flats. We hope that these improvements and benefits will be considered sufficiently valuable to grant approval to this project.



brodie**plant**goddard *Building for the future*

BRODIE PLANT GODDARD
HOLMBURY HOUSE

DORKING BUSINESS PARK
STATION ROAD DORKING
SURREY RH4 1HJ

T_01306 887070

F_01306 876716

E_admin@bpg.co.uk

W_www.bpg.co.uk



brodie**plant**goddard architects + surveyors.