

Group Property

Notes:

This drawing is the copyright and property of The Royal Bank of Scotland plc. It must not be copied or published without written consent.

Please work to figured dimensions.

**STYLES & WOOD**  
DESIGN

Aspect House  
Manchester Road  
Altrincham WA14 5PG  
t: +44 (0)161 926 6000  
www.stylesandwood.co.uk



1 no 600mm high internally illuminated projecting sign

3no 245mm Vinyl Chevron Graphics

2 no 515mm high NatWest fascia with 1 no set of internally illuminated letters and chevron logo and 1 no set of 360mm internally illuminated chevron.

1no Bespoke vinyl Entrance sign

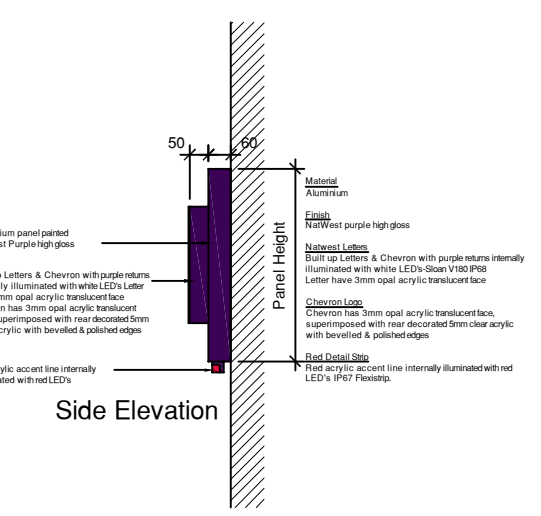
1 no White Web/Tel vinyl graphic

1 no non-illuminated aluminum nameplate sign

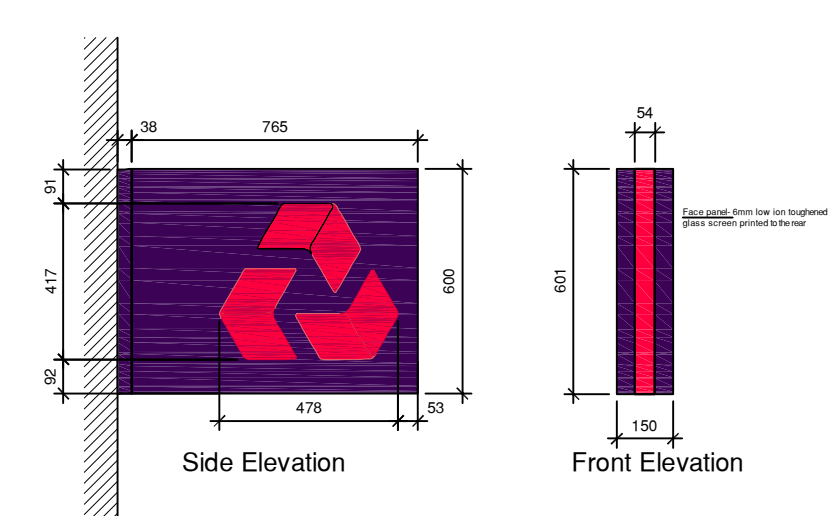
ELEVATION 1  
KILBURN HIGH ROAD  
WEST END LANE



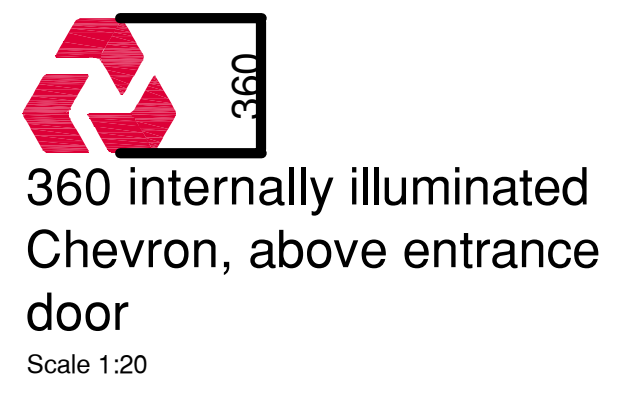
515 Fascia Sign - Logotype  
Scale 1:20



245 vinyl window Chevron Scale 1:20

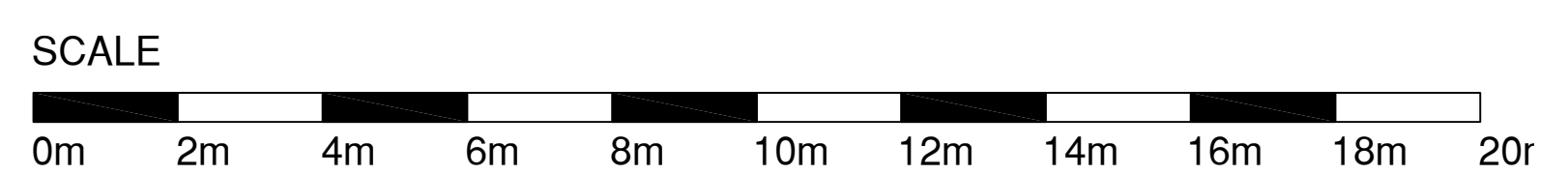


Projecting Sign 600 Fascia & Projecting Sign Setting Out  
Scale 1:20



360 internally illuminated Chevron, above entrance door  
Scale 1:20

Internal Reference Document: Drawing to be read in conjunction with the latest;  
- Tracker  
- Design Manual



rev	description	date

A	Additional rear elevation structure	18.09.14
---	-------------------------------------	----------



project  
Kilburn  
74 Kilburn High Road  
London, NW6 4HS

title  
ELEVATION 1  
PROPOSED

scale  
1:50 @ A1

dwn	chk	app
IW	-	
date	date	date
09.10.14	-	

consultants' drawing number	brand
D0572-176-004	

rbs drawing number	rev.
2869/GA/E1	A