

# APPROVED ELEVATIONS

## KEY TO MATERIALS

1. red multi-stack facing bricks
2. yellow stack facing bricks
3. western red cedar board cladding
4. aluminium-framed double glazing system; colour PA1 7032
5. pressed aluminium rainscreen panel; colour PA1 7032
6. frameless glass balustrade system
7. zinc-coated steel cladding panels; colour dark grey
8. aluminium framed glass rooflight; colour PA1 7032
9. stainless steel mesh tralis



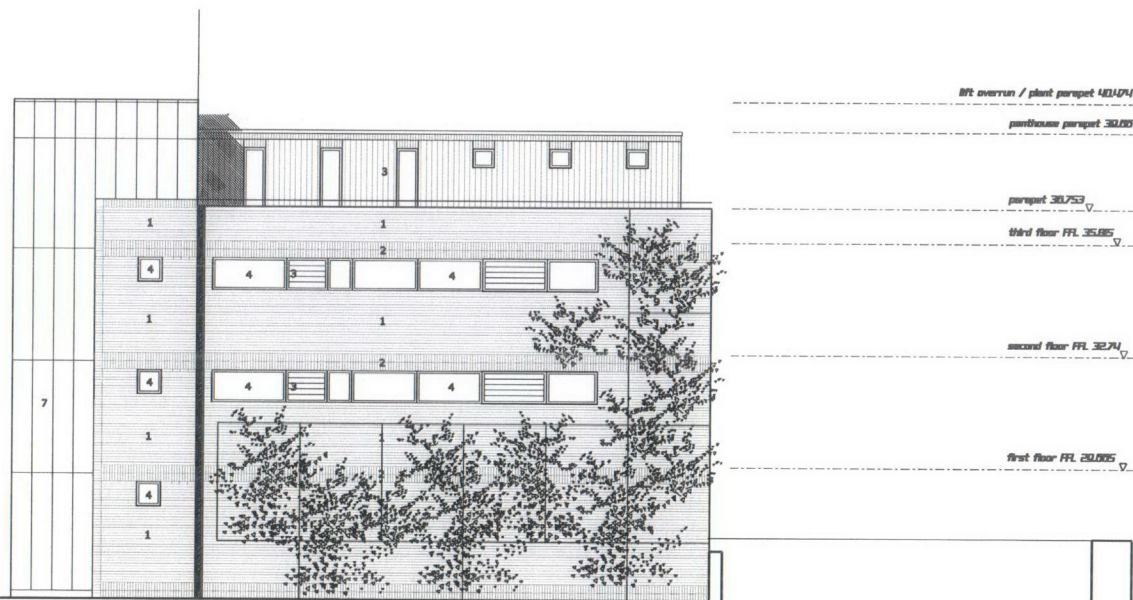
NORTH ELEVATION



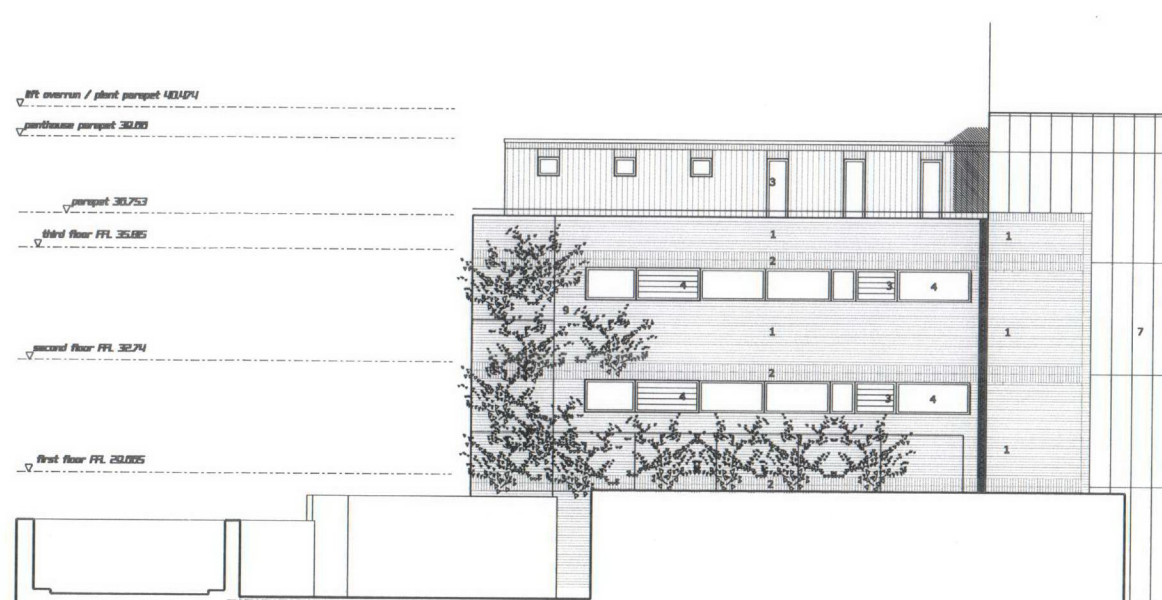
NORTH-EAST ELEVATION



EAST ELEVATION



SOUTH ELEVATION



WEST ELEVATION

RECEIVED  
30 OCT 2008

rev.	date
chartered architects <b>JCNM LIMITED</b> 12 Great Castle Street London W1W 8LR T 020 7580 1884 F 020 7537 3328 E info@jcnm.co.uk W www.jcnm.co.uk	
client <b>DG Property Consultants</b>	
dwg no. <b>J06 / 28 / P-402</b>	rev.
scale <b>1:100 @ A1 1:200 @ A3</b>	date <b>Jan 07</b>
dwg title <b>APPROVED ELEVATIONS</b>	
project <b>Proposed Mixed-Use Development                      at Granby House                      Granby Terrace                      London NW1</b>	
status <b>PLANNING DRAWING</b>	

JCNM architects