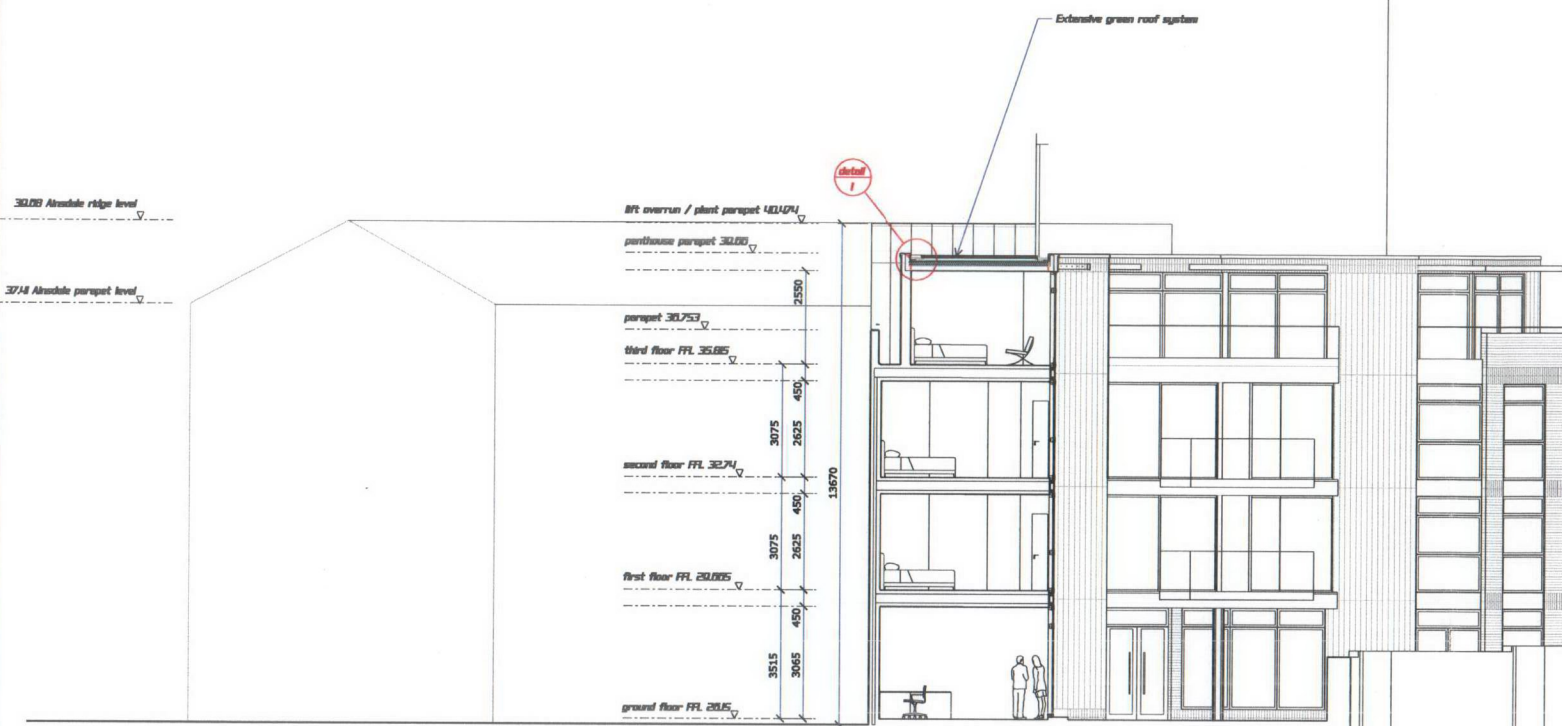
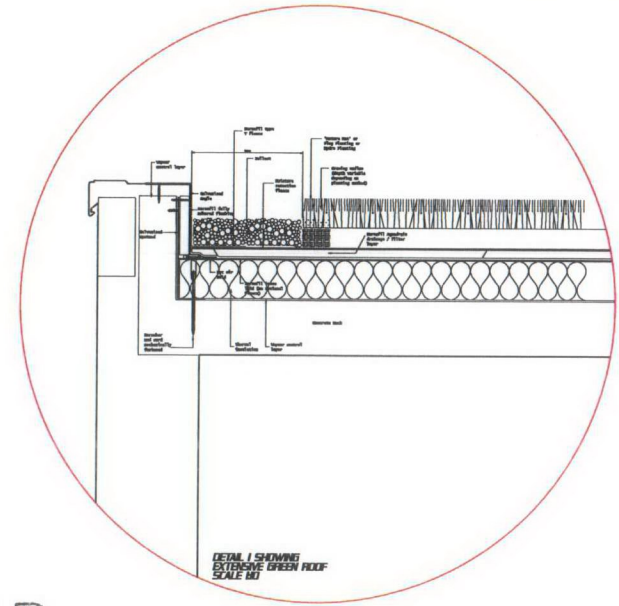


APPROVED SECTIONS

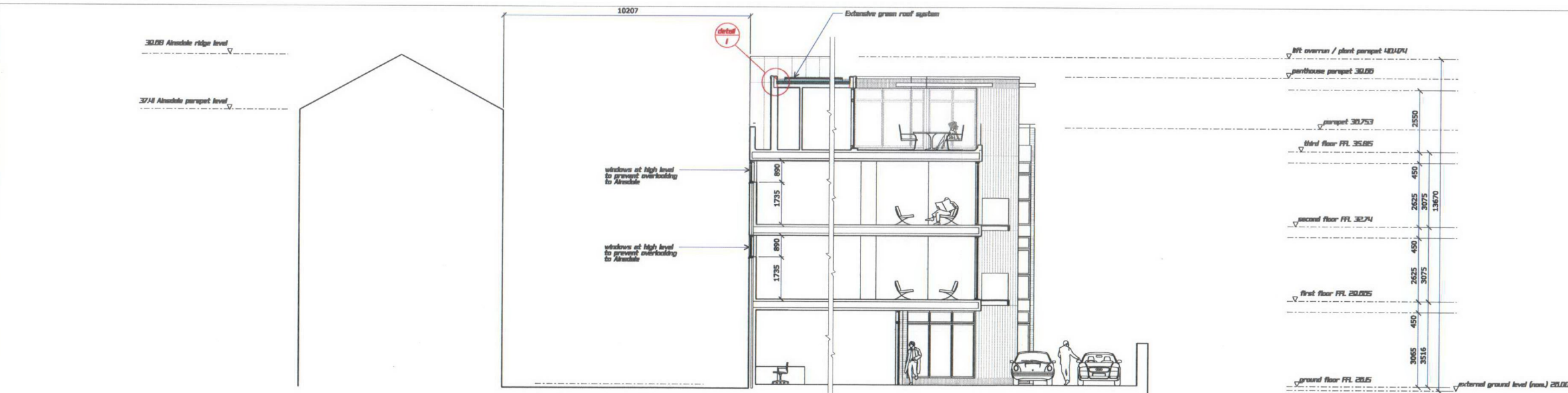
notes



SECTION A-A'



RECEIVED
30 OCT 2008



SECTION B-B'

rev.	date
chartered architects	
JCNM LIMITED 12 Great Castle Street London W1W 6LR T 020 7560 1884 F 020 7637 9328 E info@jcnm.co.uk W www.jcnm.co.uk	
date	
DG Property Consultants	
dwg no. J06 / 28 / P-301	
scale B00 @ A1 1:200 @ A3	date Jan '07
dwg title APPROVED SECTIONS	
project Proposed Mixed-Use Development at Granby House Granby Terrace London NW1	
status PLANNING DRAWING	

JCNM architects