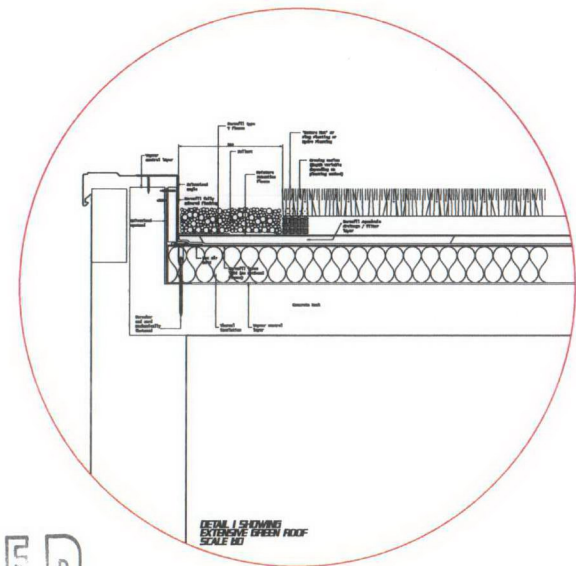
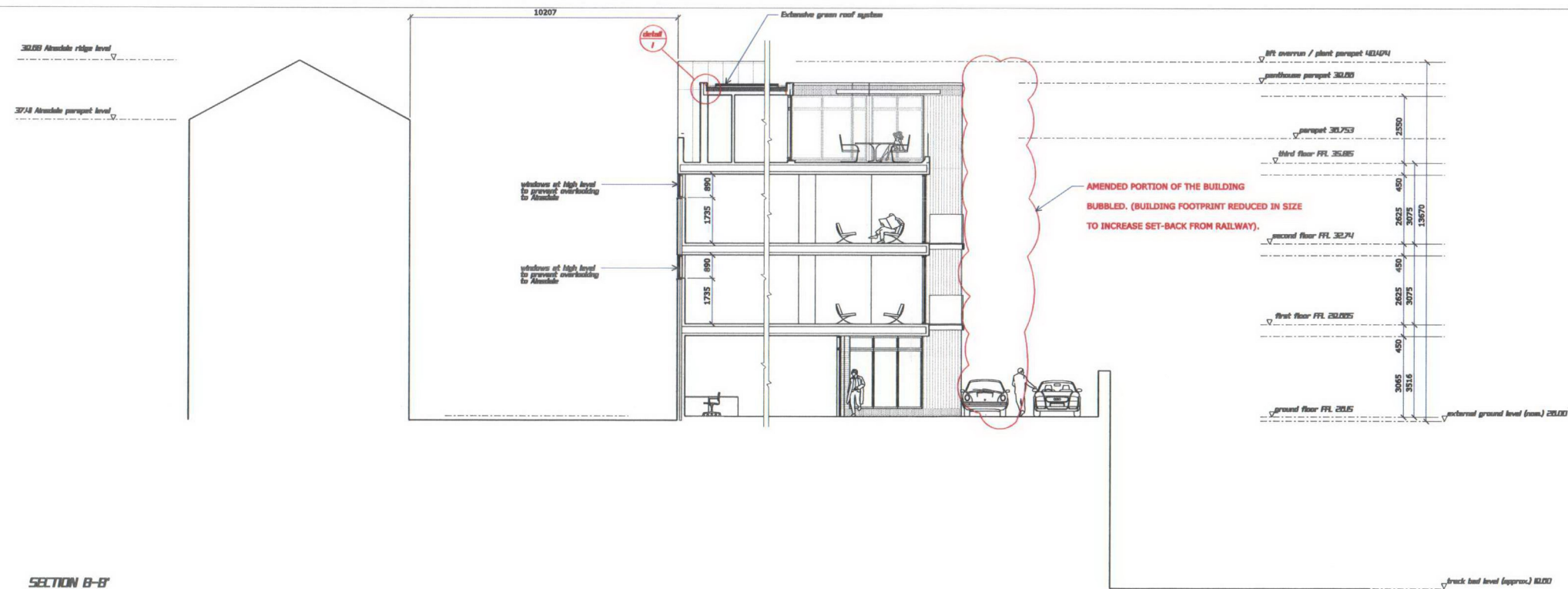


SECTION A-A'



RECEIVED
30 OCT 2008



SECTION B-B'

D Bubbles and notes added to highlight changes. C Minor amendments to sections B Green roof added A Rooflights omitted; Level access created.	OCT '08 OCT '08 FEB '08 JUNE '07
rev.	date
chartered architects <div style="text-align: center;"> JCNM LIMITED 12 Great Castle Street London W1W 6LR T 020 7580 1684 F 020 7537 3328 E info@jcnm.co.uk W www.jcnm.co.uk </div>	
date <div style="text-align: center;"> DG Project Consultants </div>	
<div style="display: flex; justify-content: space-between;"> <div> dwg no. J06 / 28 / P-300 scale 1:500 @ A1 dwg title SECTIONS AS PROPOSED </div> <div> rev. D date Jan '07 </div> </div>	
project Proposed Mixed-Use Development at Granby House Granby Terrace London NW1	
status PLANNING DRAWING	