

THIS DRAWING HAS BEEN PRODUCED SOLELY FOR THE CLIENT AND PROJECT LISTED BELOW AND IS SUBMITTED AS PART OF A PLANNING APPLICATION AND IS NOT INTENDED FOR USE BY ANY OTHER PERSON OR FOR ANY OTHER PURPOSE.

OTHERS MUST SATISFY THEMSELVES WITH RESPECT TO THE ACCURACY OR SUITABILITY OF THE DRAWINGS OR FOR ANY OTHER REASON.

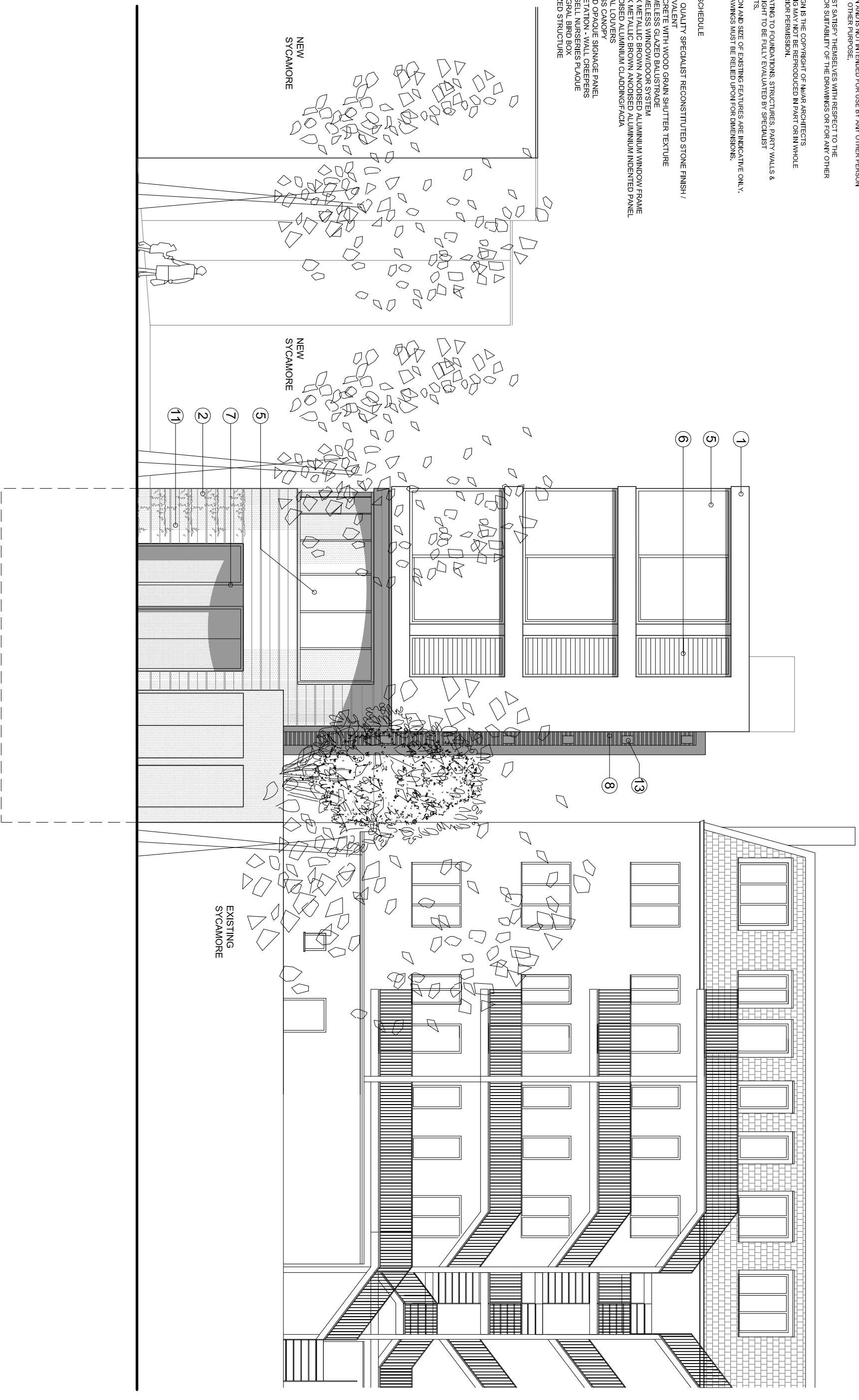
© THIS DESIGN IS THE COPYRIGHT OF N&A/R ARCHITECTS. THE DRAWING MAY NOT BE REPRODUCED IN PART OR IN WHOLE WITHOUT PRIOR PERMISSION.

ISSUES RELATING TO FOUNDATIONS, STRUCTURES, PARTY WALLS & RIGHTS OF LIGHT TO BE FULLY EVALUATED BY SPECIALIST CONSULTANTS.

THE LOCATION AND SIZE OF EXISTING FEATURES ARE INDICATIVE ONLY. SURVEY DRAWINGS MUST BE RELIED UPON FOR DIMENSIONS.

FINISHES SCHEDULE

- 1 HIGH QUALITY SPECIALIST RECONSTITUTED STONE FINISH / EQUIVALENT
- 2 CONCRETE WITH WOOD GRAIN SHUTTER TEXTURE
- 3 FRAMELESS GLAZED BALUSTRADE
- 4 FRAMELESS WINDOW/DOOR SYSTEM
- 5 DARK METALLIC BROWN ANODISED ALUMINIUM WINDOW FRAME
- 6 DARK METALLIC BROWN ANODISED ALUMINIUM INDENTED PANEL
- 7 ANODISED ALUMINIUM CLADDING/FAÇADA
- 8 METAL LOUVERS
- 9 GLASS CANOPY
- 10 SOLID OPAQUE SIGNAGE PANEL
- 11 VEGETATION - WALL CREEPERS
- 12 RUSSELL NURSERIES PLAQUE
- 13 INTEGRAL BIRD BOX
- 14 GLAZED STRUCTURE



REAR ELEVATION

192 HAVERSTOCK HILL

N&A/R Architects
L O N D O N .

PROPOSED REAR ELEVATION

DATE : APRIL 2014
SCALE : 1:100 @ A3

0312/HH/212

