

KEY  
 Site Location

NOTES

**AECOM**  
 MidCity Place  
 71 High Holborn  
 London, WC1V 6QS  
 +44 (0)20 7061 7000  
 www.aecom.com

**PROJECT**  
 Bartrams Convent

**ISSUE/REVISION**

NO.	DATE	DESIGN	BY	CHK'D	APP'D
02	09/14	RT	RT	JS	NA

**PROJECT NUMBER**  
60237873

**SHEET TITLE**  
SITE LOCATION

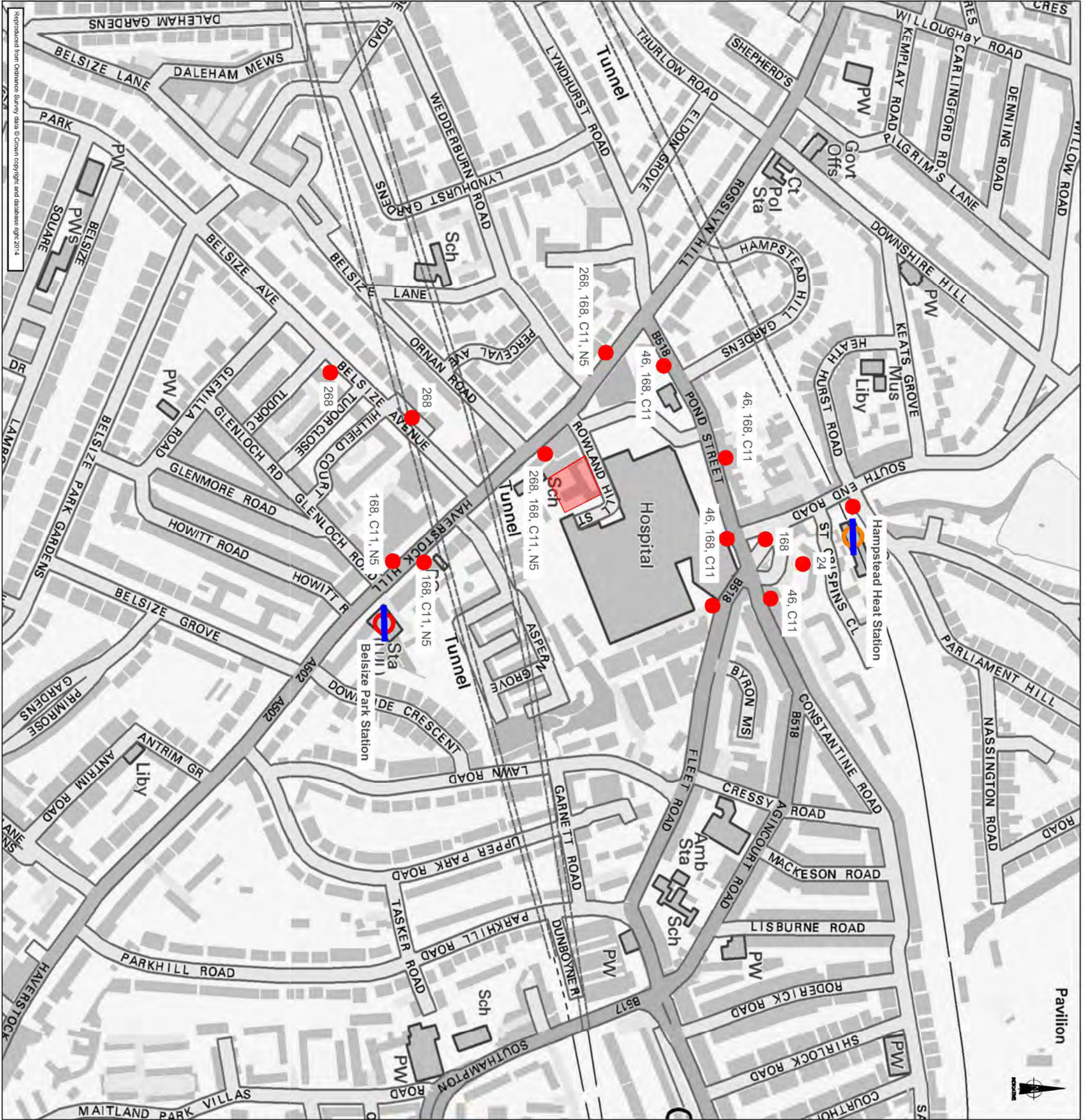
**SHEET NUMBER**  
APPENDIX\_A

This drawing has been prepared for the use of AECOM's client. It may not be used, modified, reproduced or relied upon by third parties, except as agreed by AECOM or as required by law. AECOM accepts no responsibility, and denies any liability whatsoever, to any party for uses of this drawing without AECOM's express written consent. Do not scale this document. All measurements must be obtained from the stated dimensions.



## Appendix B – Public Transport Plan





NOTES



KEY

- Site Location
- Underground station
- Overground station
- Bus stop
- XX Service number

**AECOM**  
 MidCity Place  
 71 High Holborn  
 London, WC1V 6QS  
 +44 (0)20 7061 7000  
 www.aecom.com

**PROJECT**  
 Bartrams Convent

**ISSUE/REVISION**

NO.	DATE	DESIGN	CHKD	APPD
02	09/14	RT	RT	JS
03		DESIGN	CHKD	APPD

**PROJECT NUMBER**  
60237873

**SHEET TITLE**  
PUBLIC\_TRANSPORT

**SHEET NUMBER**  
APPENDIX\_B

Reproduced from Ordnance Survey data © Crown copyright and database right 2014



## Appendix C – Pedestrian Isochrones Plan



ISO A3 420 x 297mm



NOTES






AECOM  
 MidCity Place  
 71 High Holborn  
 London, WC1V 6QS  
 +44 (0)20 7061 7000  
 www.aecom.com

PROJECT

Bartrams Convent

KEY

-  Site Location
-  400m Walking Isochrone
-  800m Walking Isochrone

ISSUE/REVISION

DATE	DESIGN	DRAWN	CHK'D	APP'D
02/09/14	RT	RT	JS	NA
I/R				

PROJECT NUMBER

60237873

SHEET TITLE

PEDESTRIAN\_ISOCHRONE\_PLAN

SHEET NUMBER

APPENDIX\_C

Reproduced from Ordnance Survey data © Crown copyright and database right 2014

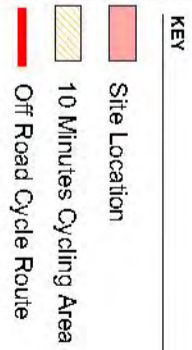
Last saved by: TURDHANR(2014-09-02) Last Printed: 2014-09-06  
 Filename: P:\UK\04\TILONDON DEV\PLANNING LIBRARY\PROJECTS\60237873 - BARTRAMS CONVENT\DRAWINGS\WORKING\FIGURES.DWG

This drawing has been prepared for the use of AECOM's client. It may not be used, modified, reproduced or relied upon by third parties, except as agreed by AECOM or as required by law. AECOM accepts no responsibility, and denies any liability, whatsoever, to any party that uses or relies on this drawing without AECOM's express written consent. Do not scale this document. All measurements must be obtained from the stated dimensions.



## Appendix D – Cycle Isochrones Plan





**NOTES**

This drawing has been prepared for the use of AECOM's client. It is not to be used, modified, reproduced or relied upon by a third party, except as agreed to by AECOM or as required by law. AECOM accepts no responsibility and denies any liability whatsoever, to any party that uses or relies on this drawing without AECOM's express written consent. Do not scale this drawing. All measurements must be obtained from the stated dimensions.



**AECOM**  
 MidCity Place  
 71 High Holborn  
 London, WC1V 6DS  
 +44 (0)20 7061 7000  
 www.aecom.com

**PROJECT**  
 Bartrams Convent

**ISSUE/REVISION**

NO.	DATE	DESCRIPTION	BY	CHKD	APPD

**PROJECT NUMBER**  
 60237873

**SHEET TITLE**  
 CYCLE\_ISOCHRONES\_PLAN

**SHEET NUMBER**  
 APPENDIX D



## Appendix E – PTAL Data



# PTAI Study Report File Details

Date 28/05/2014 09:35

Day of week M-F

Time period AM peak

Walk speed 4.8 kph

Walk file PLSQLTest

POI Name: 527213, 185325

---

## Bus Services

Reliability factor for this mode is 2

Maximum walk time for this mode is 8 minutes

Maximum walk distance for this mode is 640.0 metres

Stop BELSIZE PARK GARDENS

Walk time to stop from POI is 6.81 minutes

Walk distance to stop from POI is 544.42 metres

Route 268 Direction BACK Frequency 5.0 giving AWT of 6.0 minutes

Route 268 Direction OUT Frequency 5.0 giving AWT of 6.0 minutes

Stop ROYAL FREE HOSPITAL

Walk time to stop from POI is 1.27 minutes

Walk distance to stop from POI is 101.88 metres

Route 268 Direction OUT Frequency 5.0 giving AWT of 6.0 minutes

Route 268 Direction BACK Frequency 5.0 giving AWT of 6.0 minutes

Route C11 Direction BACK Frequency 7.5 giving AWT of 4.0 minutes

Route C11 Direction OUT Frequency 7.5 giving AWT of 4.0 minutes

Route 168 Direction BACK Frequency 9.0 giving AWT of 3.33 minutes

Route 168 Direction OUT Frequency 9.0 giving AWT of 3.33 minutes

Stop BELSIZE AVENUE

Walk time to stop from POI is 4.94 minutes

Walk distance to stop from POI is 395.19 metres

Route 268 Direction BACK Frequency 5.0 giving AWT of 6.0 minutes

Route 268 Direction OUT Frequency 5.0 giving AWT of 6.0 minutes

Stop HAVERSTOCK ARMS

Walk time to stop from POI is 7.53 minutes

Walk distance to stop from POI is 602.51 metres

Route C11 Direction OUT Frequency 7.5 giving AWT of 4.0 minutes



Route C11 Direction BACK Frequency 7.5 giving AWT of 4.0 minutes  
Route 168 Direction OUT Frequency 9.0 giving AWT of 3.33 minutes  
Route 168 Direction BACK Frequency 9.0 giving AWT of 3.33 minutes

Stop BELSIZE PARK STATION

Walk time to stop from POI is 4.23 minutes

Walk distance to stop from POI is 338.69 metres

Route C11 Direction OUT Frequency 7.5 giving AWT of 4.0 minutes  
Route C11 Direction BACK Frequency 7.5 giving AWT of 4.0 minutes  
Route 168 Direction OUT Frequency 9.0 giving AWT of 3.33 minutes  
Route 168 Direction BACK Frequency 9.0 giving AWT of 3.33 minutes

Stop HAMPSTEAD HTH POND ST

Walk time to stop from POI is 3.06 minutes

Walk distance to stop from POI is 244.83 metres

Route 46 Direction OUT Frequency 6.0 giving AWT of 5.0 minutes  
Route 46 Direction BACK Frequency 6.0 giving AWT of 5.0 minutes  
Route C11 Direction BACK Frequency 7.5 giving AWT of 4.0 minutes  
Route C11 Direction OUT Frequency 7.5 giving AWT of 4.0 minutes  
Route 168 Direction BACK Frequency 9.0 giving AWT of 3.33 minutes  
Route 168 Direction OUT Frequency 9.0 giving AWT of 3.33 minutes

Stop SOUTH END GREEN

Walk time to stop from POI is 4.92 minutes

Walk distance to stop from POI is 393.26 metres

Route 46 Direction BACK Frequency 6.0 giving AWT of 5.0 minutes  
Route 46 Direction OUT Frequency 6.0 giving AWT of 5.0 minutes  
Route 24 Direction OUT Frequency 12.0 giving AWT of 2.5 minutes  
Route 24 Direction BACK Frequency 12.0 giving AWT of 2.5 minutes  
Route C11 Direction OUT Frequency 7.5 giving AWT of 4.0 minutes  
Route C11 Direction BACK Frequency 7.5 giving AWT of 4.0 minutes  
Route 168 Direction BACK Frequency 9.0 giving AWT of 3.33 minutes  
Route 168 Direction OUT Frequency 9.0 giving AWT of 3.33 minutes

Stop FLEET ROAD ROYAL FREE

Walk time to stop from POI is 5.08 minutes

Walk distance to stop from POI is 406.35 metres

Route 24 Direction OUT Frequency 12.0 giving AWT of 2.5 minutes

Stop HAVERSTOCK H DOWNSIDE CR

Walk time to stop from POI is 5.86 minutes

Walk distance to stop from POI is 468.77 metres

Route C11 Direction OUT Frequency 7.5 giving AWT of 4.0 minutes  
Route 168 Direction OUT Frequency 9.0 giving AWT of 3.33 minutes

Stop ROSSLYN HILL PILGRIMS LN

Walk time to stop from POI is 6.52 minutes

Walk distance to stop from POI is 521.26 metres

Route 46 Direction OUT Frequency 6.0 giving AWT of 5.0 minutes  
Route 46 Direction BACK Frequency 6.0 giving AWT of 5.0 minutes  
Route 268 Direction OUT Frequency 5.0 giving AWT of 6.0 minutes  
Route 268 Direction BACK Frequency 5.0 giving AWT of 6.0 minutes

TATs for this mode

Route 268 Stop ROYAL FREE HOSPITAL TAT 9.27 minutes EDF 3.24



Route C11 Stop ROYAL FREE HOSPITAL TAT 7.27 minutes EDF 4.12  
Route 168 Stop ROYAL FREE HOSPITAL TAT 6.61 minutes EDF 4.54  
Route 46 Stop HAMPSTEAD HTH POND ST TAT 10.06 minutes EDF 2.98  
Route 24 Stop SOUTH END GREEN TAT 9.42 minutes EDF 3.19

Best EDF is 4.54  
Half of all other EDFs is 6.76

AI for this mode is 11.3

---

## Underground Services

Reliability factor for this mode is .75  
Maximum walk time for this mode is 12 minutes  
Maximum walk distance for this mode is 960.0 metres

Stop Belsize Park  
Walk time to stop from POI is 4.97 minutes  
Walk distance to stop from POI is 397.52 metres  
Route Northern Line Morden to Edgware Direction N/B Frequency 4.3 giving AWT of 6.98 minutes  
Route Northern Line Kennington to Edgware Direction N/B Frequency 5.0 giving AWT of 6.0 minutes  
Route Northern Line Edgware to Kennington Direction S/B Frequency 1.3 giving AWT of 23.08 minutes  
Route Northern Line Edgware to Morden Direction S/B Frequency 8.3 giving AWT of 3.61 minutes  
Route Northern Line Edgware to Morden Direction S/B Frequency 9.7 giving AWT of 3.09 minutes  
Route Northern Line Morden to Edgware Direction N/B Frequency 9.7 giving AWT of 3.09 minutes

TATs for this mode  
Route Northern Line Edgware to Morden Stop Belsize Park TAT 9.33 minutes EDF 3.21  
Route Northern Line Kennington to Edgware Stop Belsize Park TAT 11.72 minutes EDF 2.56  
Route Northern Line Edgware to Morden Stop Belsize Park TAT 8.81 minutes EDF 3.4

Best EDF is 3.4  
Half of all other EDFs is 2.89

AI for this mode is 6.29

---

## Rail Services

Reliability factor for this mode is .75



Maximum walk time for this mode is 12 minutes

Maximum walk distance for this mode is 960.0 metres

Stop HAMPSTEAD HEATH

Walk time to stop from POI is 6.56 minutes

Walk distance to stop from POI is 524.93 metres

Route RICHMOND to STRATFORD Direction T504-T750 Frequency 4.0 giving AWT of 7.5 minutes

Route CLAPHAM JUNCTION to STRATFORD Direction T528-T750 Frequency 2.0 giving AWT of 15.0 minutes

TATs for this mode

Route RICHMOND to STRATFORD Stop HAMPSTEAD HEATH TAT 14.81 minutes EDF 2.03

Route CLAPHAM JUNCTION to STRATFORD Stop HAMPSTEAD HEATH TAT 22.31 minutes EDF 1.34

Best EDF is 2.03

Half of all other EDFs is 0.67

AI for this mode is 2.7

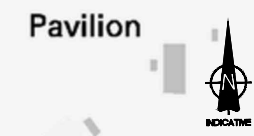
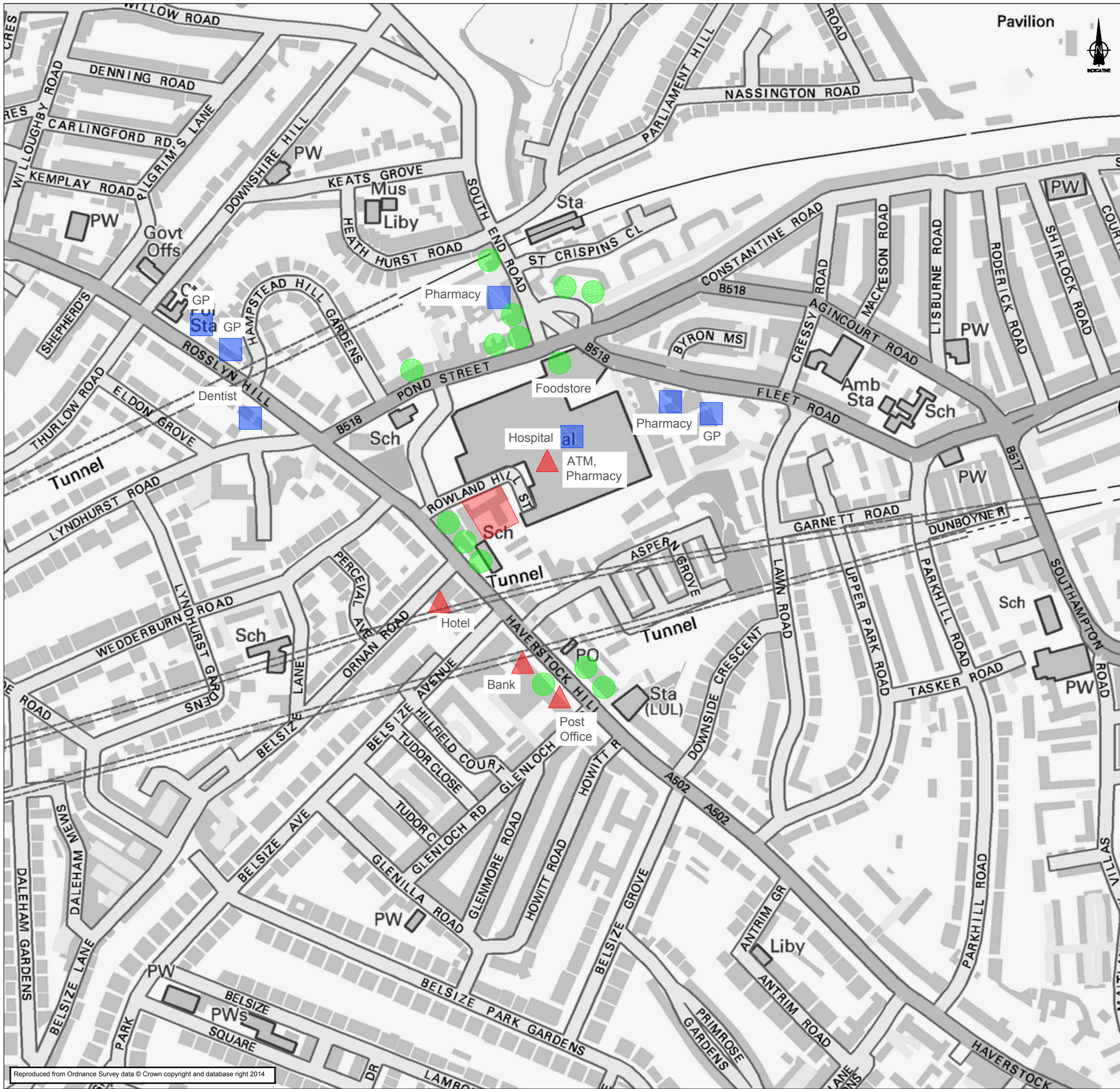
Total AI for this POI is 20.29. X: 527213, Y: 185325.

PTAL Rating is 5.



## Appendix F – Amenities Plan





NOTES

NOTES

KEY

- Site Location
- Medical facilities
- Retail/ Cafe/ Restaurant
- Other services (bank, post office, ..)



AECOM  
 MidCity Place  
 71 High Holborn  
 London, WC1V 6QS  
 +44 (0)20 7061 7000  
 www.aecom.com

PROJECT

Bartrams Convent

ISSUE/REVISION

I/R	DATE	DESIGN	DRAWN	CHK'D	APP'D
02/09/14	RT	RT	JS	NA	

PROJECT NUMBER

60237873

SHEET TITLE

AMENITIES

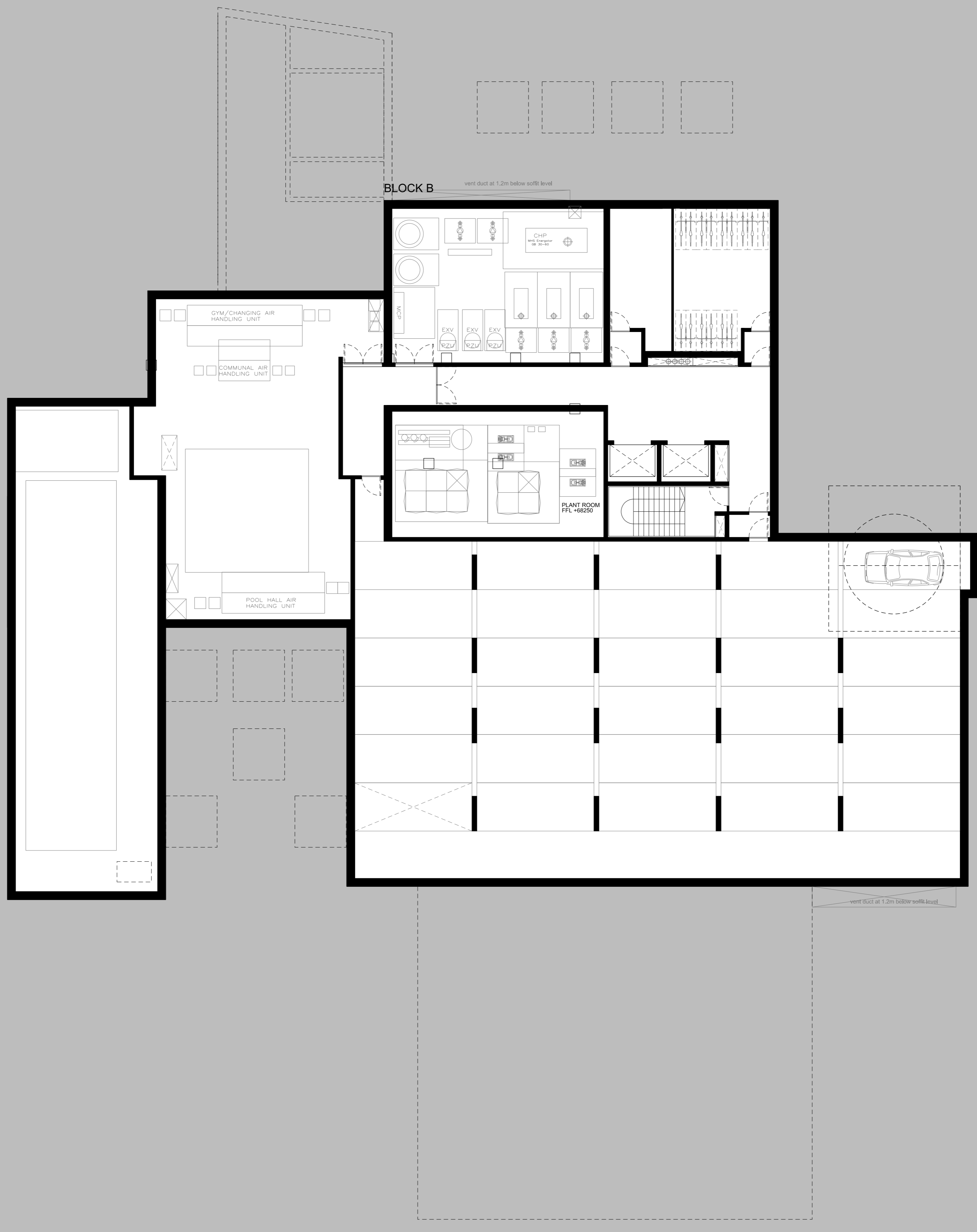
SHEET NUMBER

APPENDIX\_F

This drawing has been prepared for the use of AECOM's client. It may not be used, modified, reproduced or relied upon by third parties, except as agreed by AECOM or as required by law. AECOM accepts no responsibility, and denies any liability, whatsoever, to any party that uses or relies on this drawing without AECOM's express written consent. Do not scale this document. All measurements must be obtained from the stated dimensions.

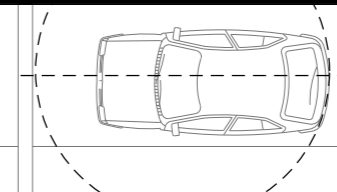


## Appendix G – Development Proposals



BLOCK B  
vent duct at 1.2m below soffit level

PLANT ROOM  
FFL +68250



vent duct at 1.2m below soffit level

**DUGGAN MORRIS ARCHITECTS**

Duggan Morris Architects Ltd  
Unit 7, 16-24 Underwood street, London, N1 7JQ  
Telephone 020 7565 7440  
www.dugganmorrisarchitects.com

- Do not scale from this drawing
- All dimensions to be checked on site by the Contractor
- And such dimensions to be their responsibility
- Report all drawing errors and omissions to the Architect
- All dimensions in millimeters unless noted otherwise
- If in doubt ask Contract Administrator

job title					
BARTRAM'S CONVENT					
drawing title/location					
BASEMENT FLOOR PLAN					
status					
PRE-PLANNING					
scale		1:125@A1		1:250@A3	
job no	source	zone	element	drawing no.	revision
A213	A		(01)	1 01	C

C	14.09.25	For client approval
B	14.09.05	For client approval
A	14.08.29	For client approval
DRAFT	14.08.08	DRAFT issued for approval - core rearranged
/	14.04.08	Stage 2
revision	date	amendment

