

6.3 The Proposal and its Immediate Neighbours

North-East

6.3.1 We met with the Royal Free Hospital on a number of occasions to discuss the proposed scheme. The hospital and its requirements have been taken into account throughout the design process.



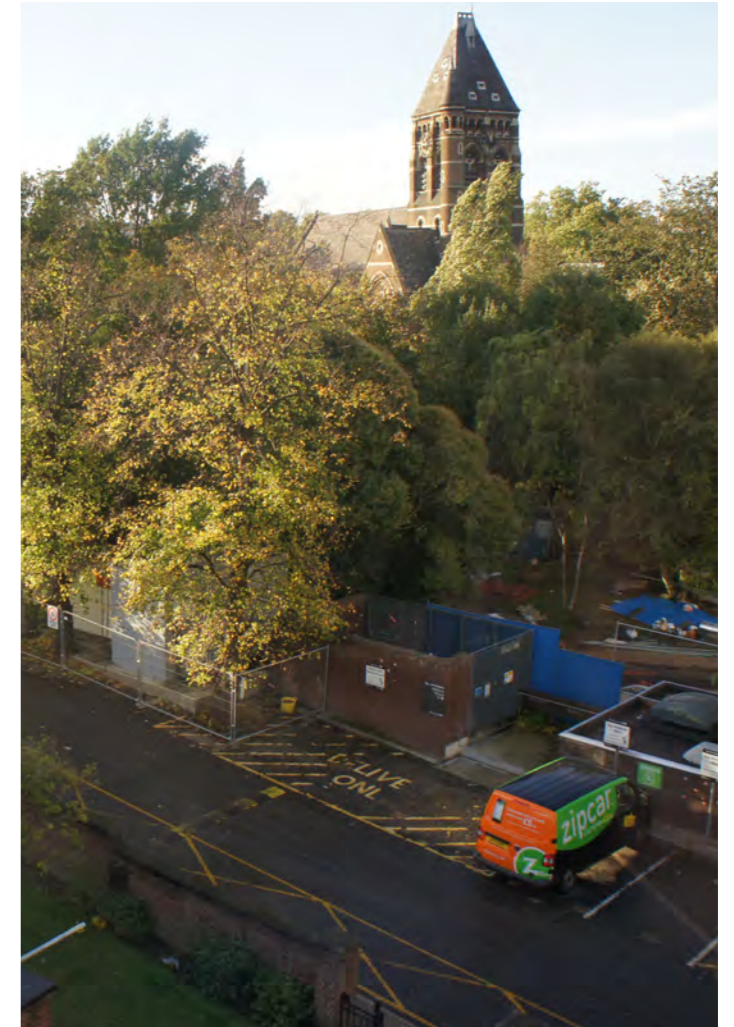
Above

Photographs showing the hospital adjacent to the east boundary of the site

6.3 The Proposal and its Immediate Neighbours

West

6.3.2 We met with the Rosary Primary School a number of times to discuss the impact of the proposal, and have responded to their comments. The requirements of the school have been taken into account throughout the design process.



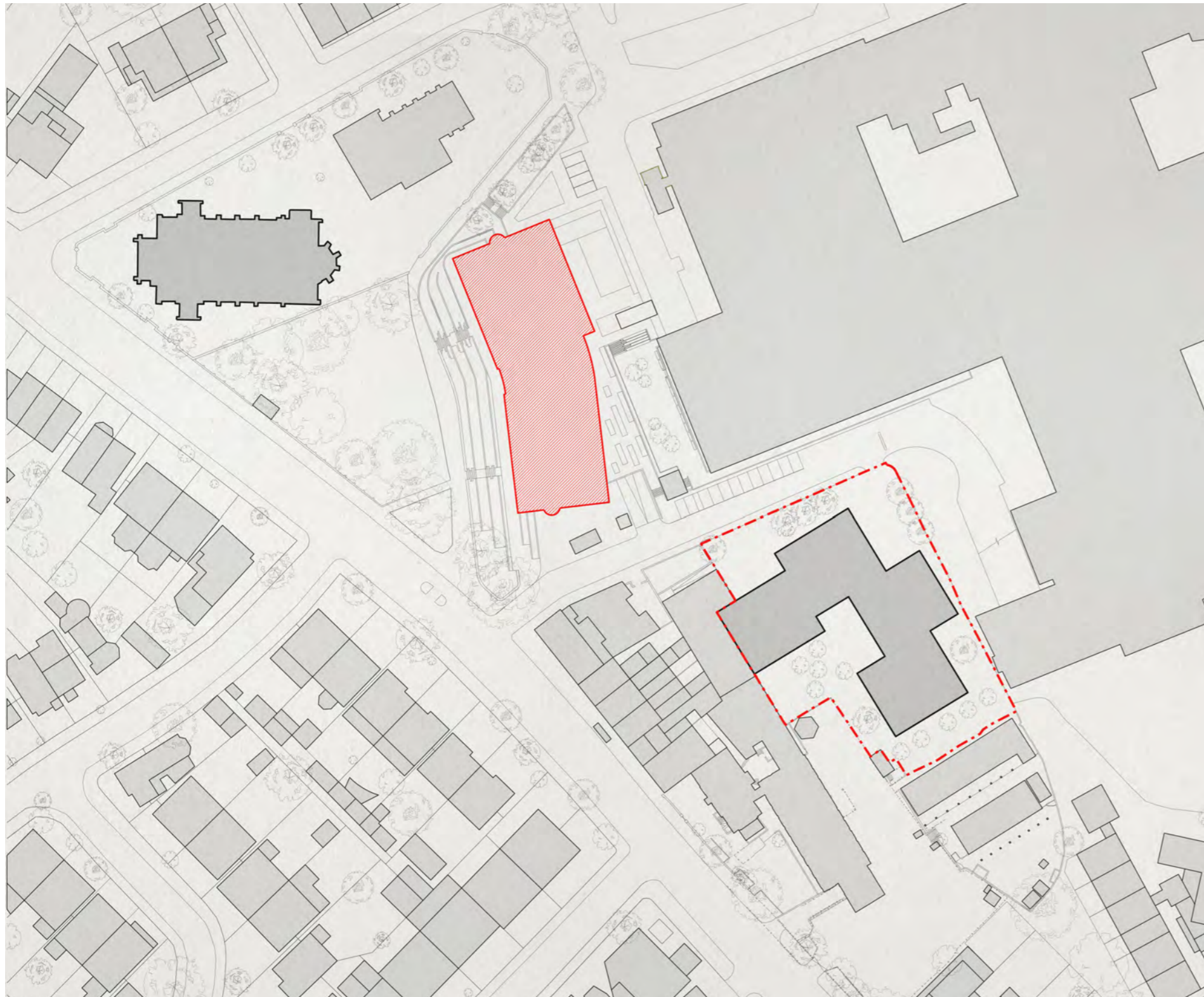
Above

Photographs showing prominent landmarks, with the school to the western edge of the site boundary

6.3 The Proposal and its Immediate Neighbours

New Neighbour - Hospital Extension

6.3.3 We have met with the design team for the hospital extensions and are aware of their proposal. Both teams have been considering options to work together to minimise the impact of the two proposals to the immediate and larger surroundings, particularly in relation to St. Stephen's Church.



Clockwise from above left

Plan

Site plan showing footprint of proposed extension to RFH by Hopkins Architects

Visualisations

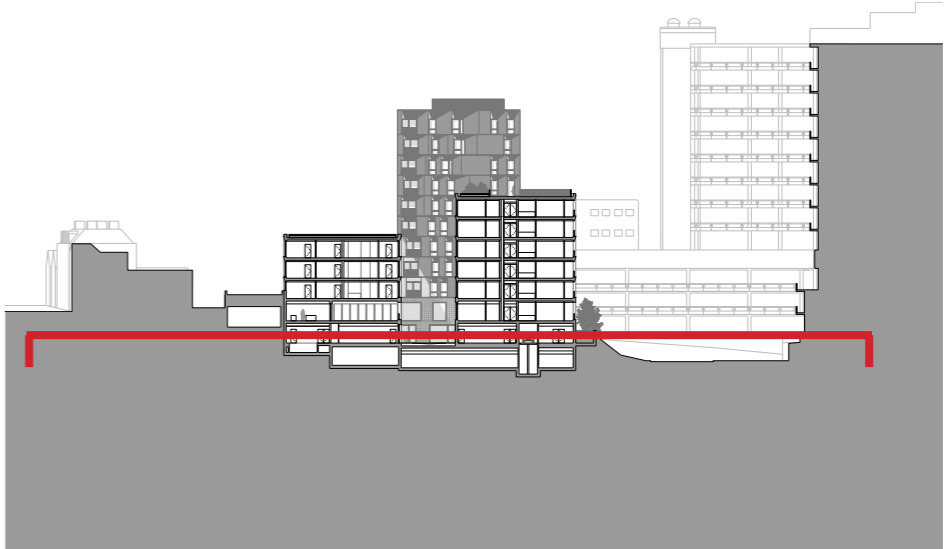
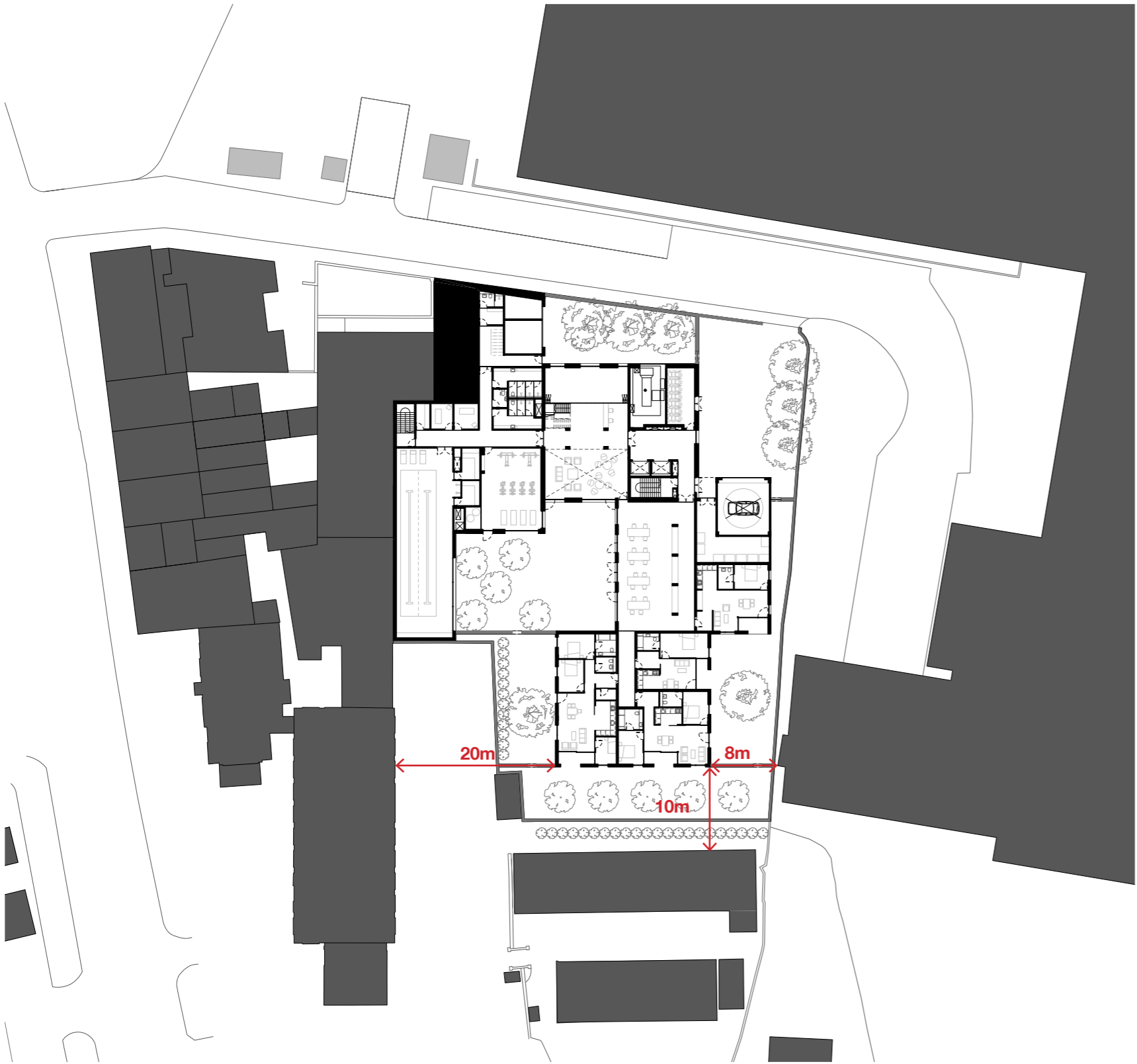
Views of the extension

6.3 The Proposal and its Immediate Neighbours

Lower Ground Floor Adjacencies

6.3.4 The diagram below left illustrates the adjacencies of the surrounding context at lower ground level. Block D is the closest block to the hospital and school neighbours. However the closest the block sits to the nursery block is 10 metres with landscaping to ensure privacy screening.

1.



Clockwise from left

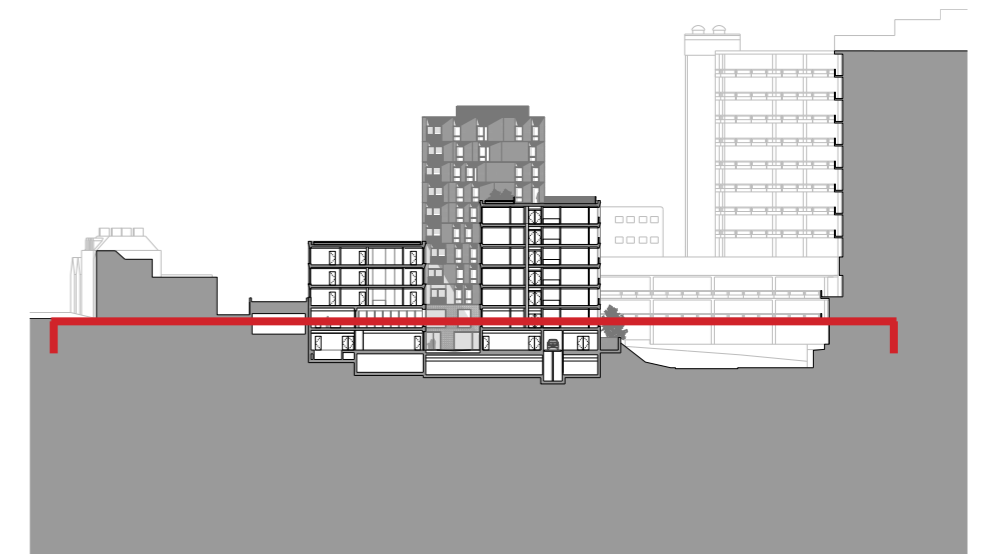
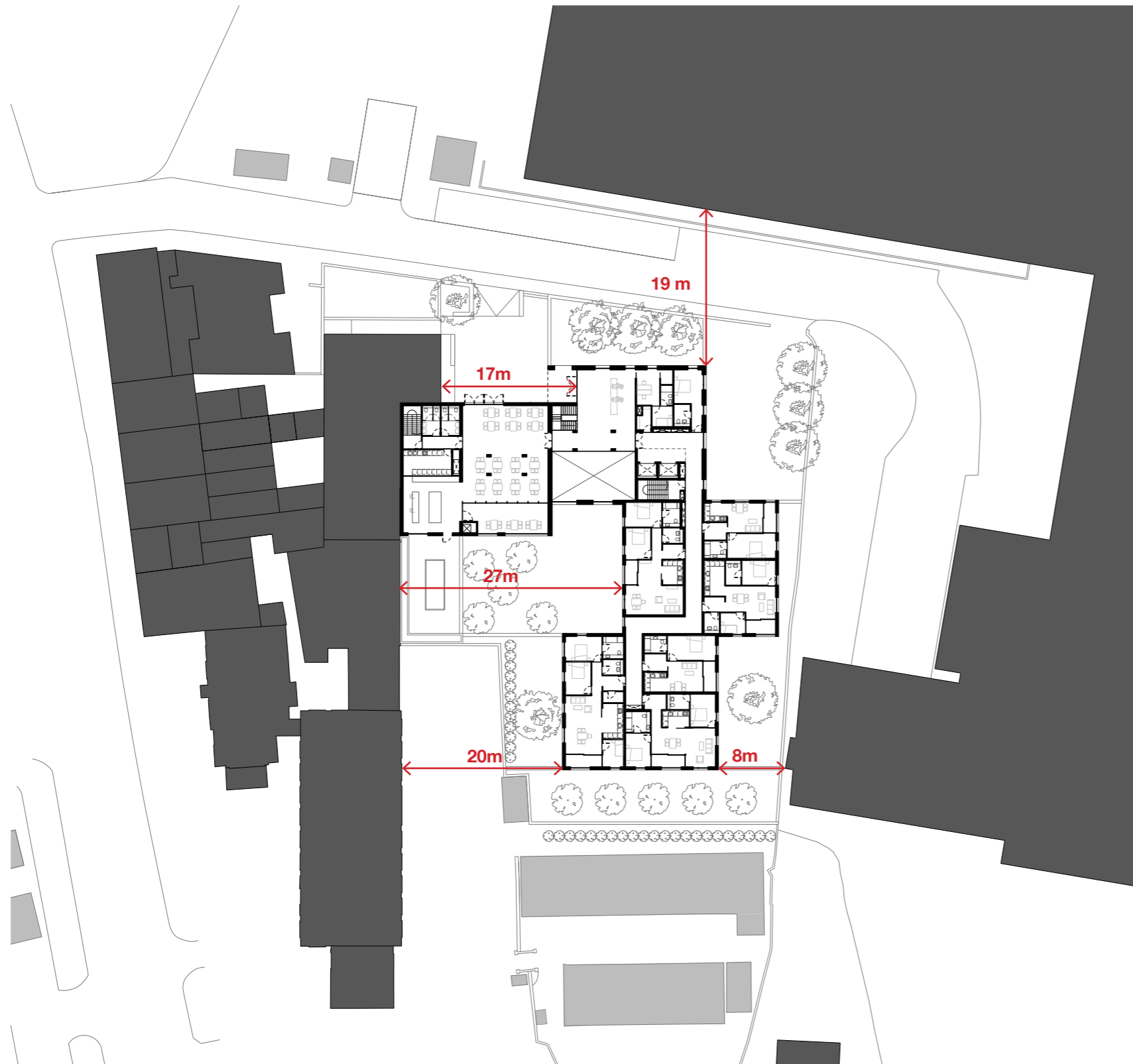
1. Plan
Diagram showing the boundaries sensitivity around the site from Lower ground floor

6.3 The Proposal and its Immediate Neighbours

Ground Floor Adjacencies

6.3.5 At ground floor the ancillary building of the school is closest to our main entrance, however our entrance is set back by a minimum of 17 metres. Block D at ground floor level is higher than the nursery block and is set back from the main school building by a minimum of 20 metres.

1.



Clockwise from left

1.
Plan

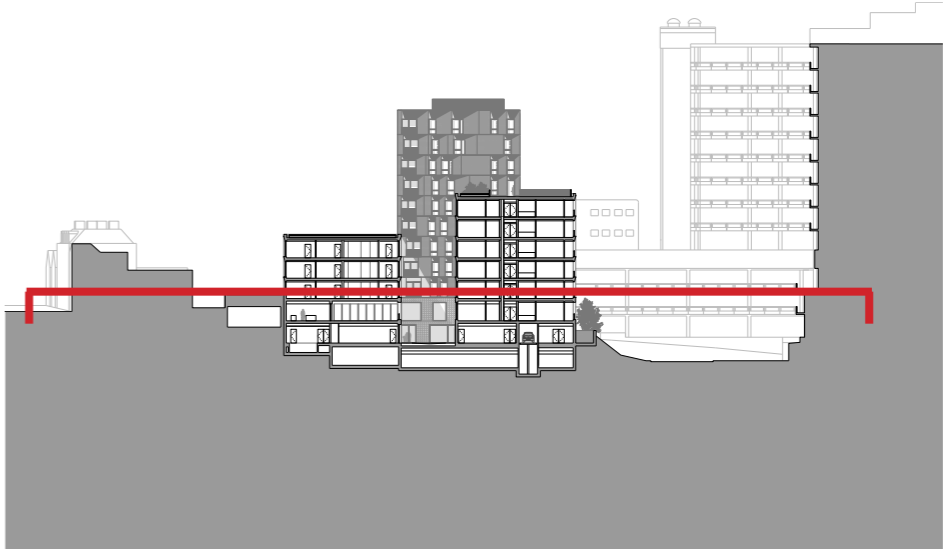
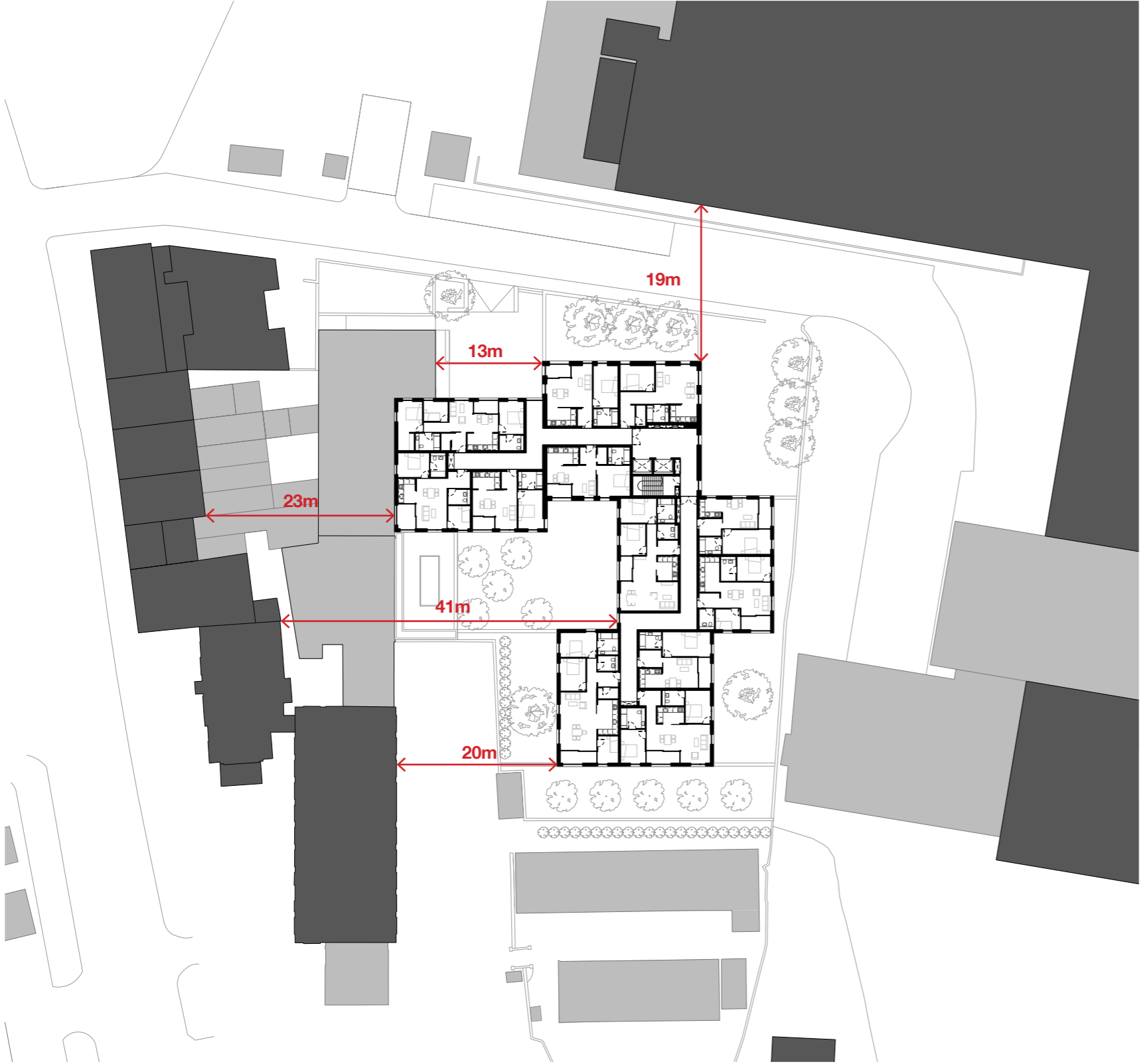
Diagram showing the boundaries
sensitivity around the site from Ground
floor

6.3 The Proposal and its Immediate Neighbours

First Floor Adjacencies

6.3.6 At first floor the main school building has windows looking out towards Block D, but our proposal is set back by a minimum of 20 metres from the school.

1.



Clockwise from left

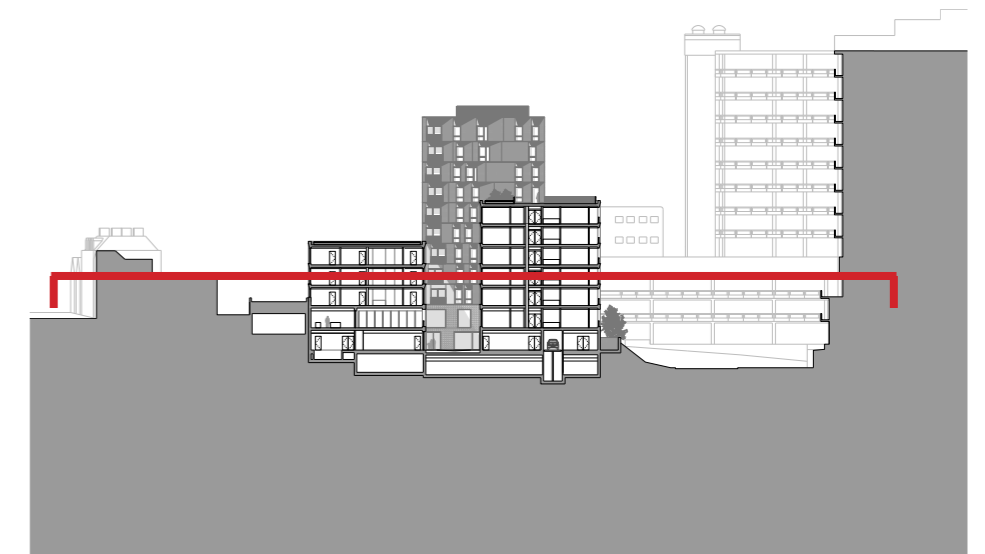
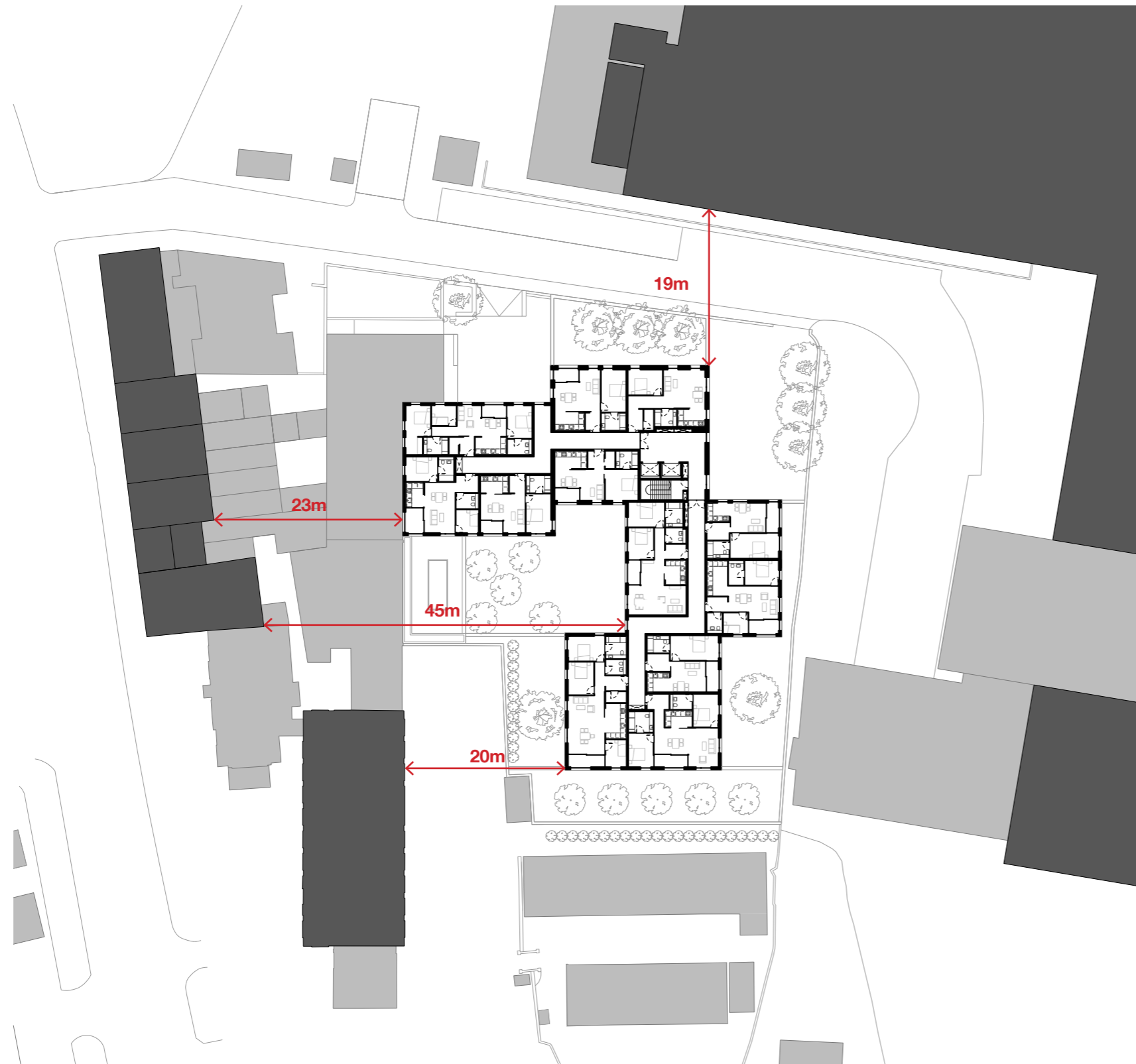
1.
Plan
Diagram showing the boundaries sensitivity around the site from 1st floor

6.3 The Proposal and its Immediate Neighbours

Second Floor Adjacencies

6.3.7 At second floor the main school building has windows looking out towards Block D, but our proposal is set back by a minimum of 20 metres from the school.

1.



Clockwise from left

1.
Plan

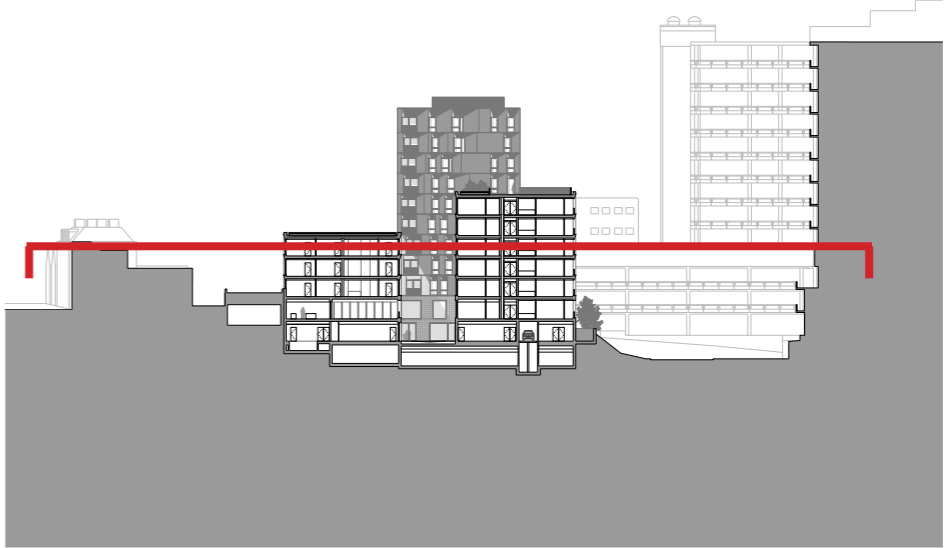
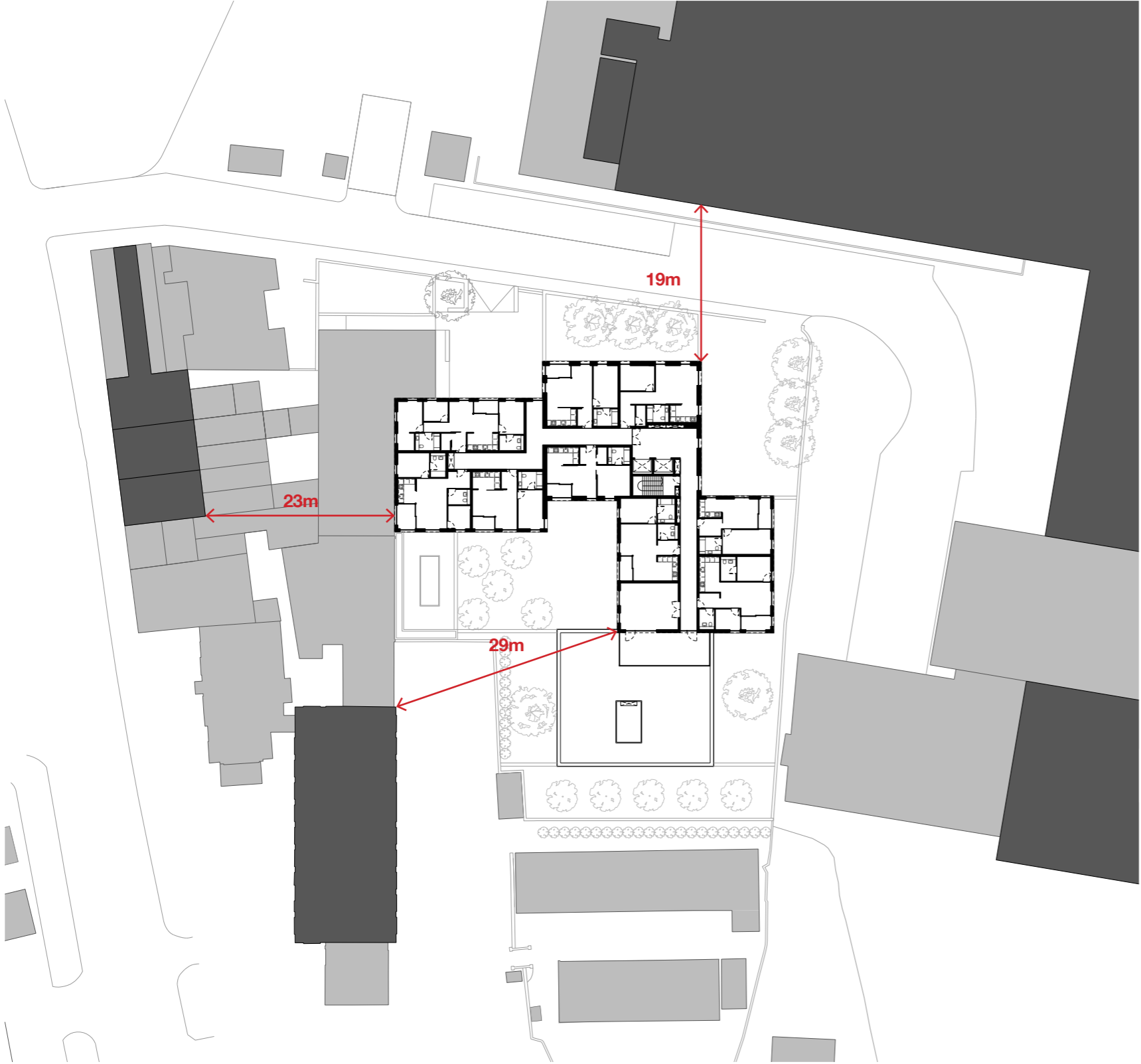
Diagram showing the boundaries
sensitivity around the site from 2nd floor

6.3 The Proposal and its Immediate Neighbours

Third Floor Adjacencies

6.3.8 At third floor the main school building has windows looking out towards our Block C, but our proposal is set back by a minimum of 29 metres from the school.

1.



Clockwise from left

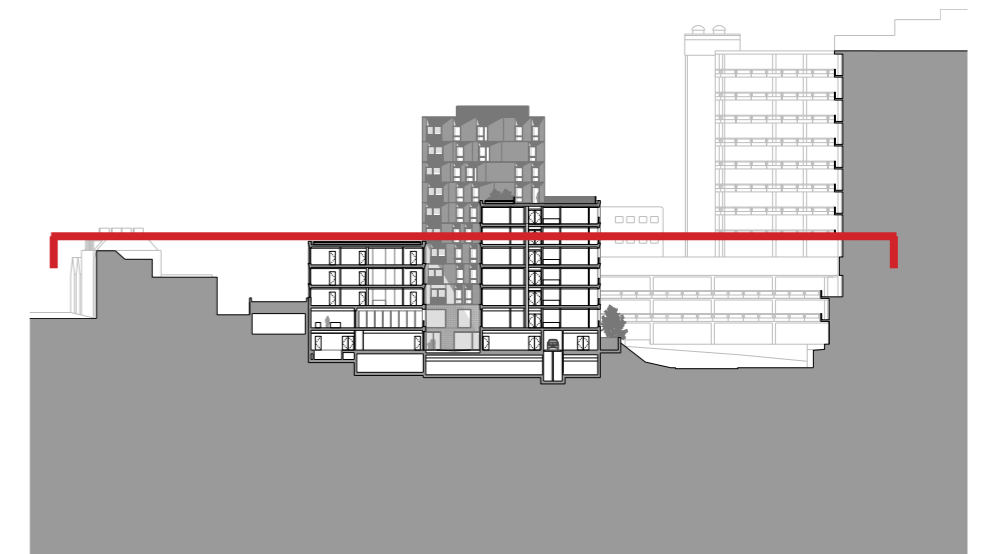
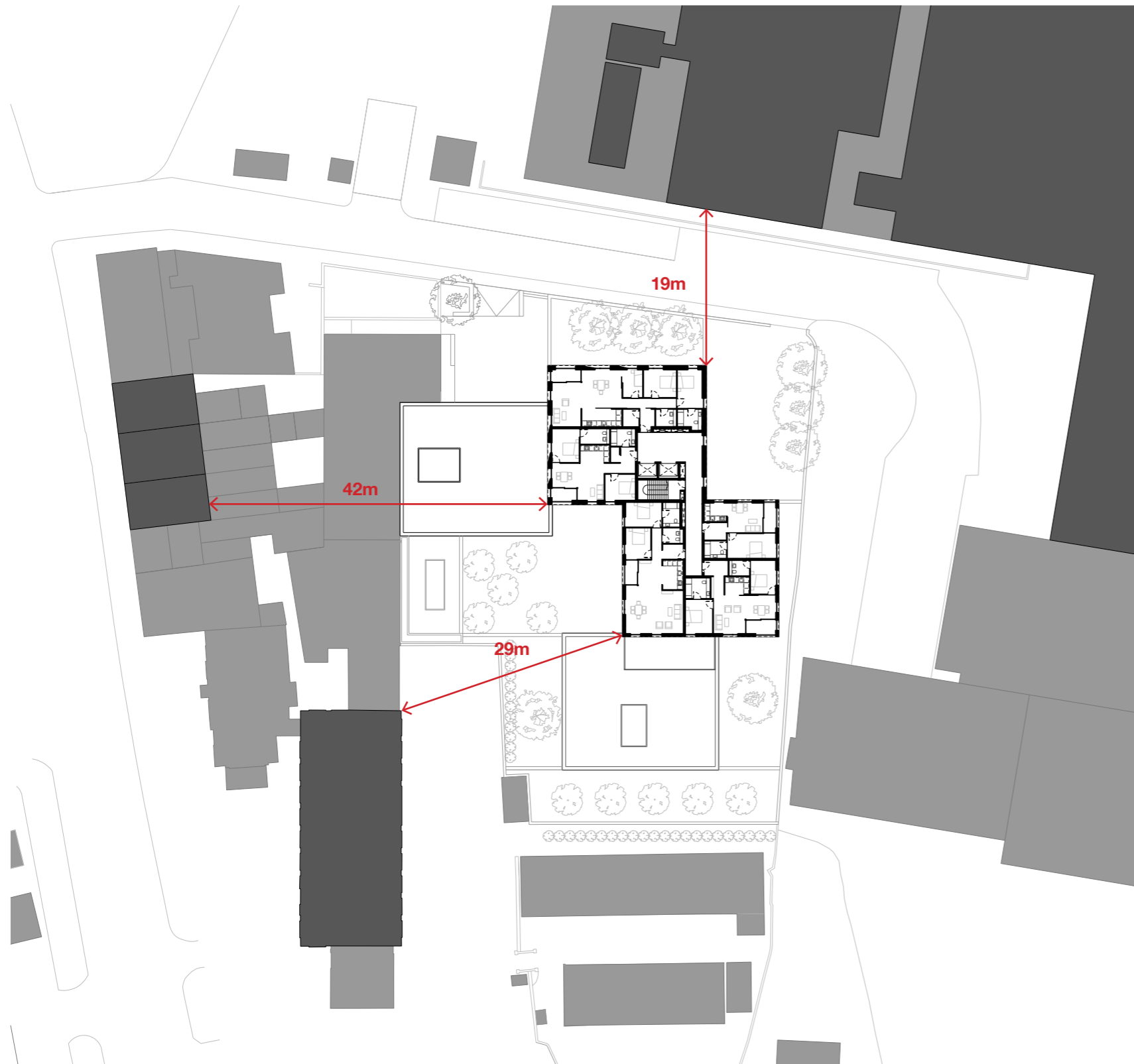
1. Plan
Diagram showing the boundaries sensitivity around the site from 3rd floor

6.3 The Proposal and its Immediate Neighbours

Fourth Floor Adjacencies

6.3.9 At fourth floor the main school building has windows looking out towards our Block C, but our proposal is set back by a minimum of 29 metres from the school.

1.



Clockwise from left

1.
Plan

Diagram showing the boundaries
sensitivity around the site from 4th floor