

6.2 Proposed Landscape Design

Tree Planting



- Key**
- 
- 1. *Prunus 'Tai Haku'*  
Cherry

---

  - 2. *Betula albosinensis 'Burkill'*  
Chinese White Birch

---

  - 3. *Sorbus discolor*  
Mountain Ash

---

  - 4. *Malus domestica*  
Common Apple

---

  - 5. *Pyrus communis*  
Common Pear

---

  - 6. *Juglans regia*  
Walnut/Chestnut

---

  - 7. *Malus hupehensis*  
Flowering Crab Apple

**Left**

---

Featured tree varieties

## 6.2 Proposed Landscape Design

### Tree Planting Plan



#### Key

1. <i>Prunus 'Tai Haku'</i> Cherry	
2. <i>Betula albosinensis 'Burkill'</i> Chinese White Birch	
3. <i>Sorbus discolor</i> Mountain Ash	
4. <i>Malus domestica</i> Common Apple	
5. <i>Pyrus communis</i> Common Pear	
6. <i>Juglans regia</i> Walnut/Chestnut	
7. <i>Malus hupehensis</i> Flowering Crab Apple	

#### Left

Combined ground and lower ground floor  
landscape plan - tree planting

**6.2 Proposed Landscape Design**

Tree Planting Plan

6.2.5 The concept behind the landscape design is to create a place that ignites curiosity and wonder and encourages interaction. As such, there is a focus on textural and seasonal planting and on a wide variety of species.

6.2.6 The planting strategy builds upon this by proposing a base layer of evergreen plants upon which ornamental and seasonal varieties are layered. This incorporates plants that are productive and therapeutic, stimulating all of the senses. The strategy also extends to softening the hard boundaries of the landscape through introducing climbing plants.




---

**Left to Right from Top Row**

---

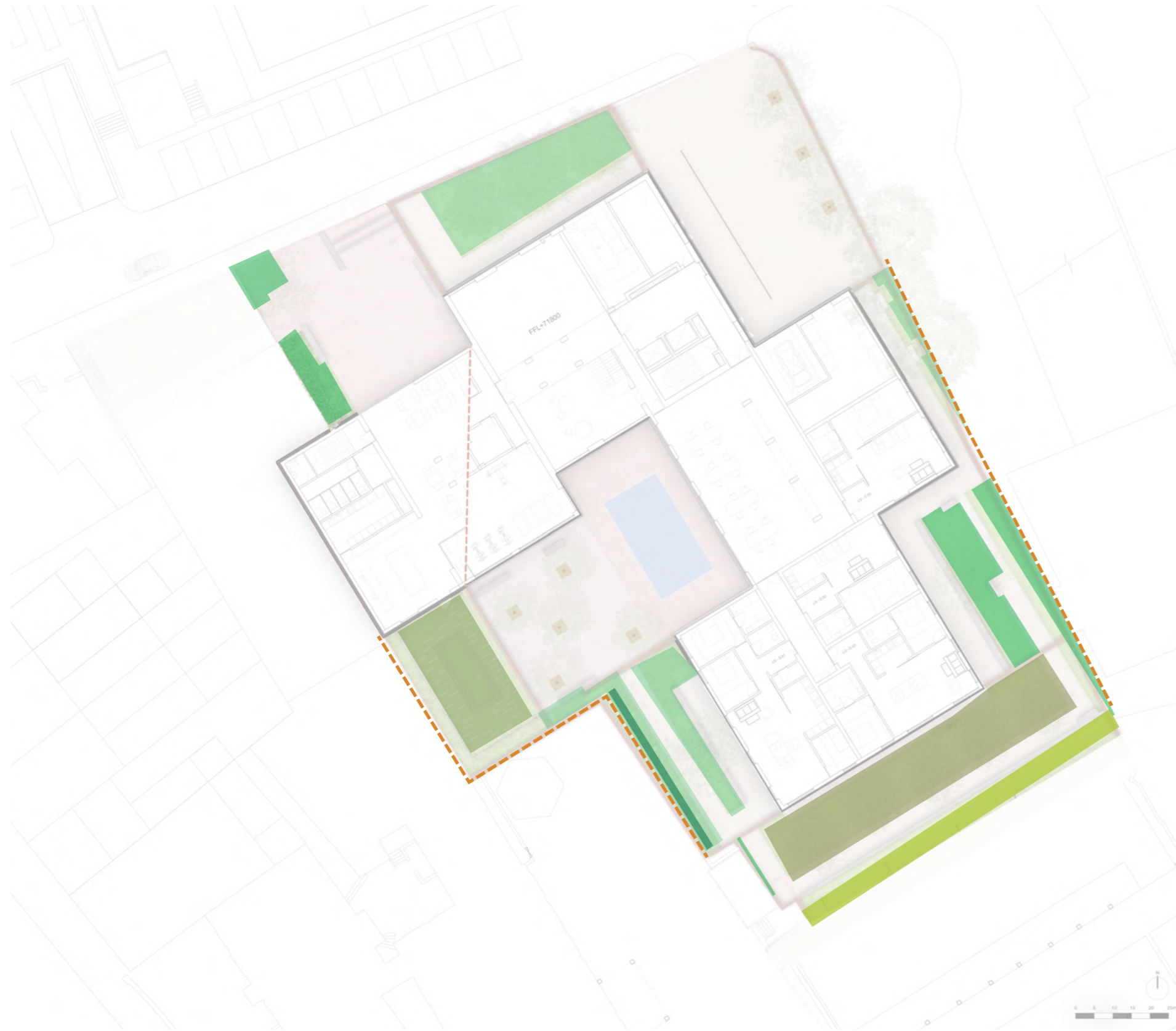
**Concept**  
Textural; Seasonal; Lightness

---

**Strategy**  
Base layer of greenery; ornamental highlights; productive/therapeutic plants; climbing plants to walls

## 6.2 Proposed Landscape Design

### Planting Strategy



#### Key

Pleached trees to create green screen	■
Herb/kitchen garden	■
Informal hedge (Hazel)	■
Shade-tolerant understorey species	■
Mixed grasses and Jasminium	■
Grasses and evergreen shrubs	■
Mixed fruit and nut planting	■
Climbing Plants	---

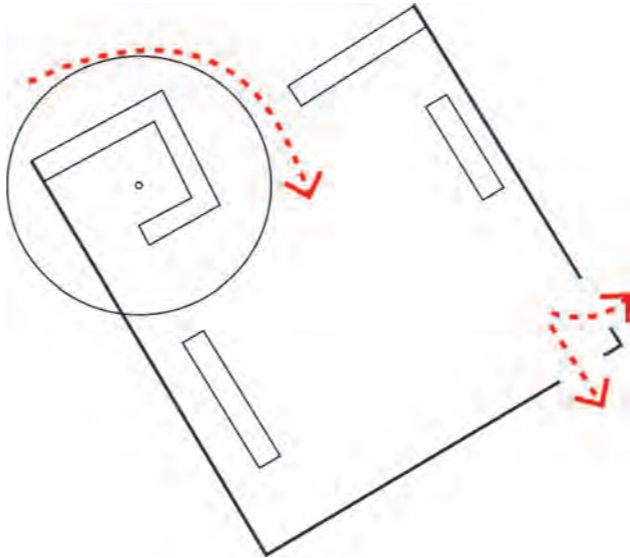
#### Left

Combined ground and lower ground floor landscape plan - planting strategy

**6.2 Proposed Landscape Design**

Arrivals Court

6.2.7 This courtyard has been designed to be welcoming, open and vibrant. The entry point from Rowland Hill Street is punctuated with a single White Cherry Tree under-planted with grasses and perennials.



**Key**

- 1. Polished concrete benches
- 2. Great White Cherry tree
- 3. Railing (to match balcony)
- 4. Terrazzo tiling
- 5. Fire escape access to school
- 6. Spill-out area of cafe

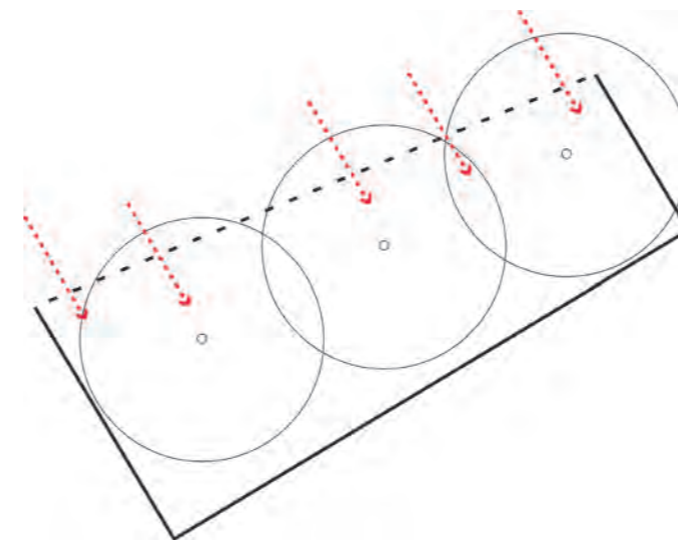
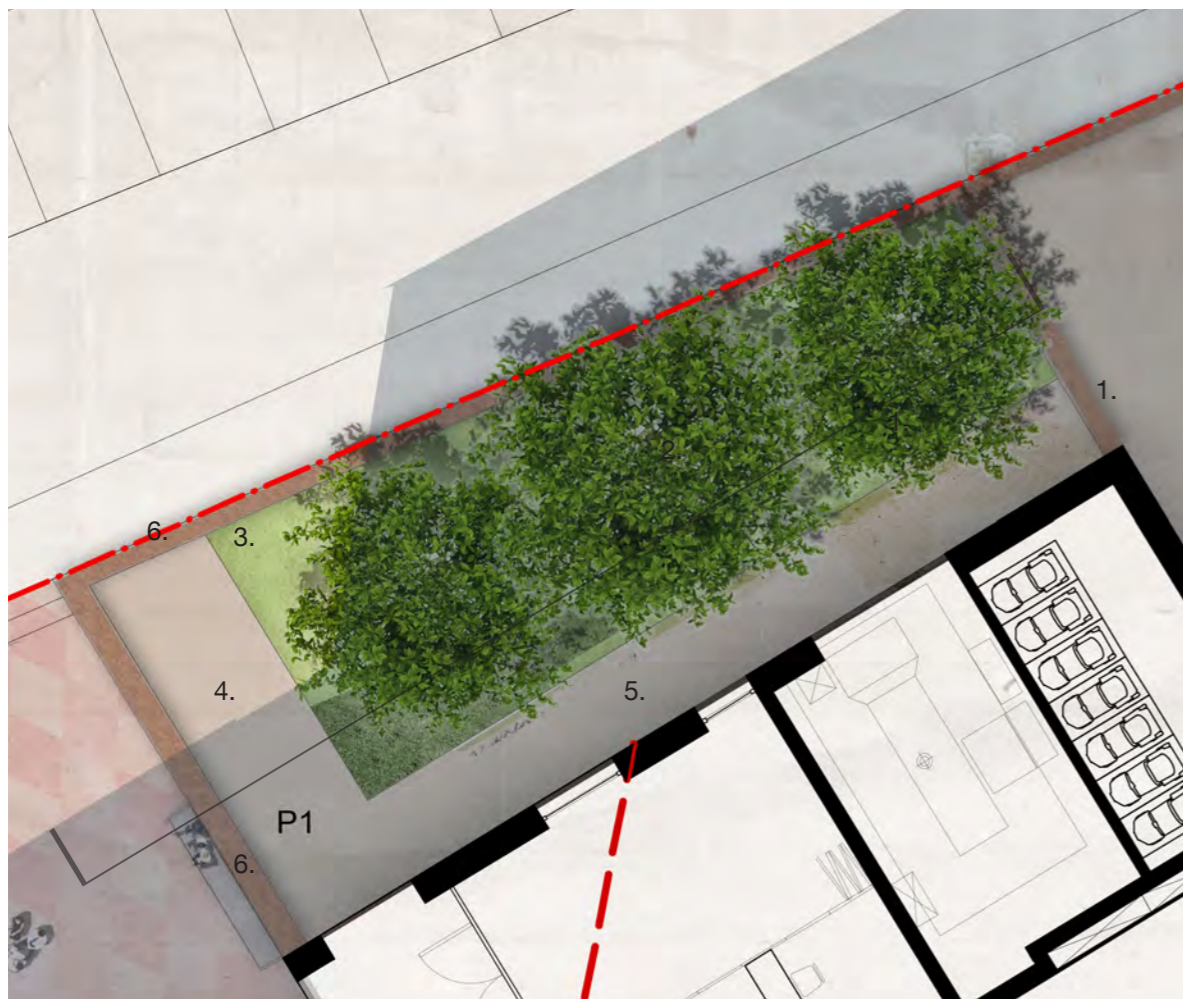
**Clockwise from top left**

Arrivals court plan; circulation diagram; cherry blossom detail; concrete benches; section

## 6.2 Proposed Landscape Design

### Tree Well Court

6.2.8 The tree well court is sunken below ground level and as such is a landscape to be viewed from above. The tree tops of the Chinese Birch will be visible from street level. The trees will be under-planted with shade-tolerant ground covers such as *Pachysandra terminalis*.



### Key

- 1. Access to court from shared surface
- 2. Chinese White Birch (x3)
- 3. Ground planting with Pachysandra
- 4. Clear access to substation
- 5. Concrete paving
- 6. Railing to match balcony

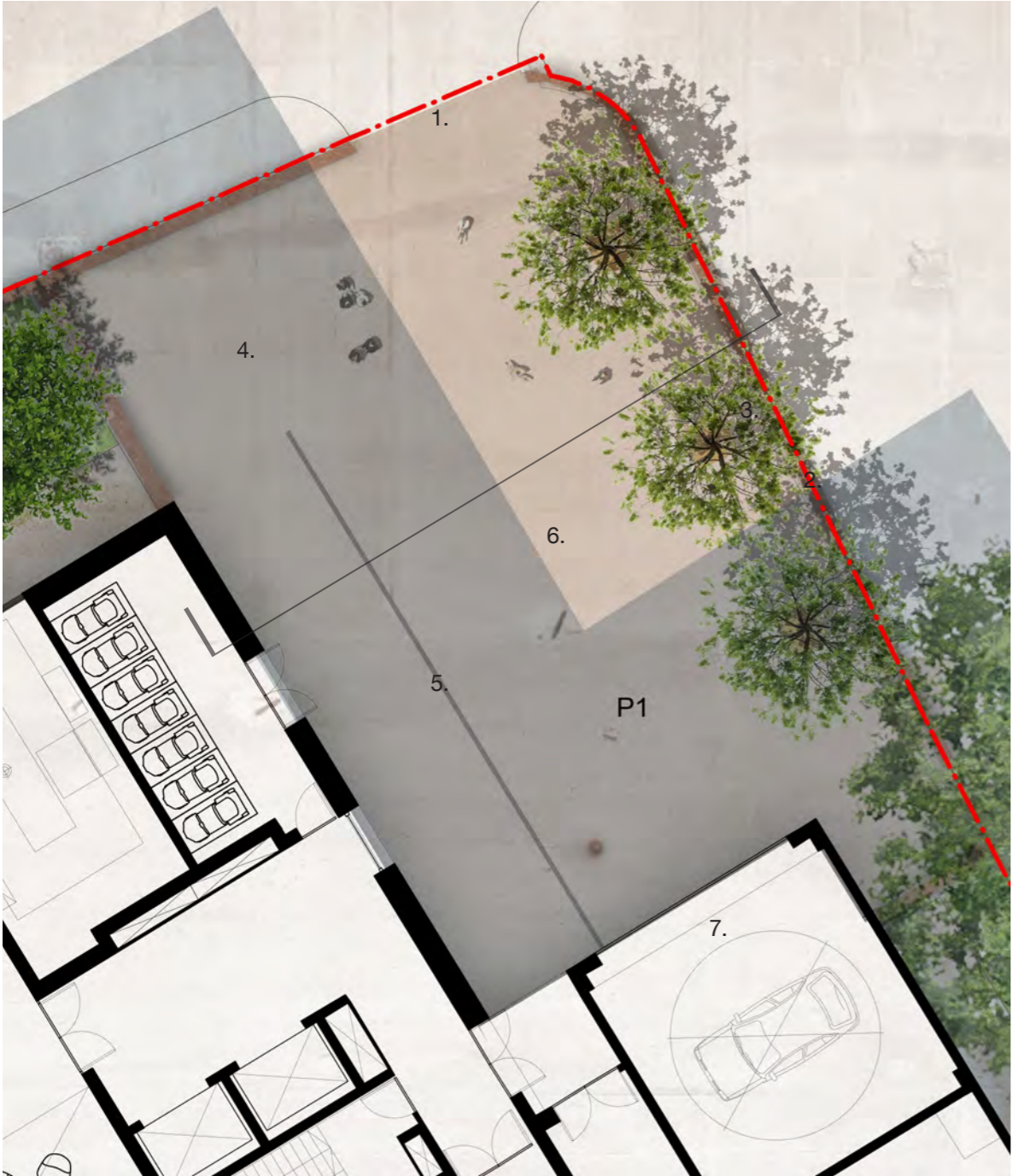
### Clockwise from top left

Tree well court plan; circulation diagram;  
Chinese White Birch; Pachysandra; section

**6.2 Proposed Landscape Design**

Shared Surface

6.2.9 The shared surface zone to the north of the site sits roughly where the vehicular access yard to the existing convent currently is. This space has been designed to be a flexible, simple paved area with three Mountain Ash trees to the eastern boundary to provide privacy screening.



**Key**

- 1. Vehicular entrance
- 2. Existing brick wall rebuilt
- 3. Sorbus trees (x3)
- 4. Attenuation tank to be replaced (80m³)
- 5. Channel drain for surface water runoff
- 6. Concrete paving

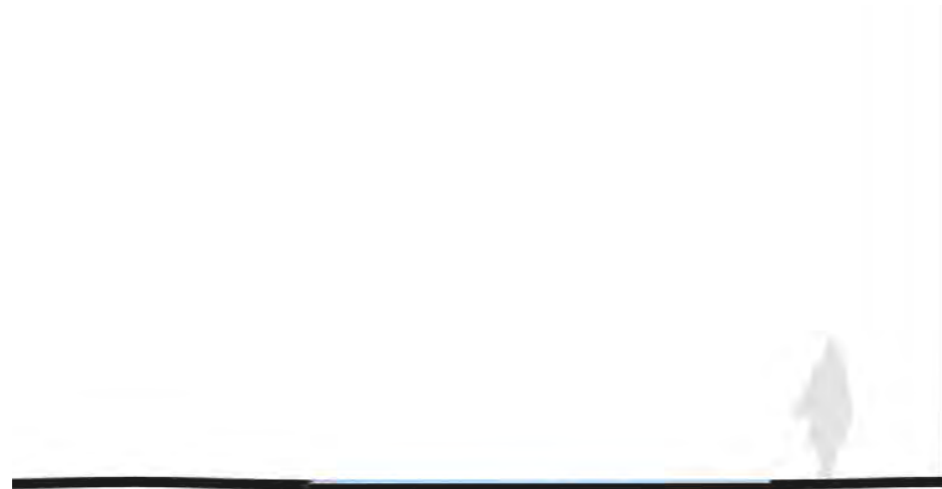
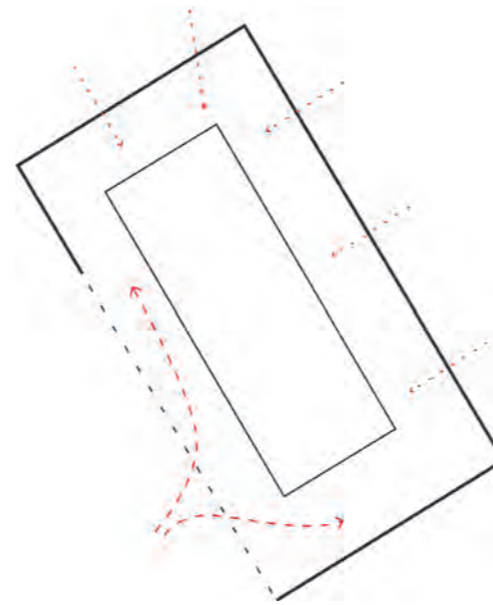
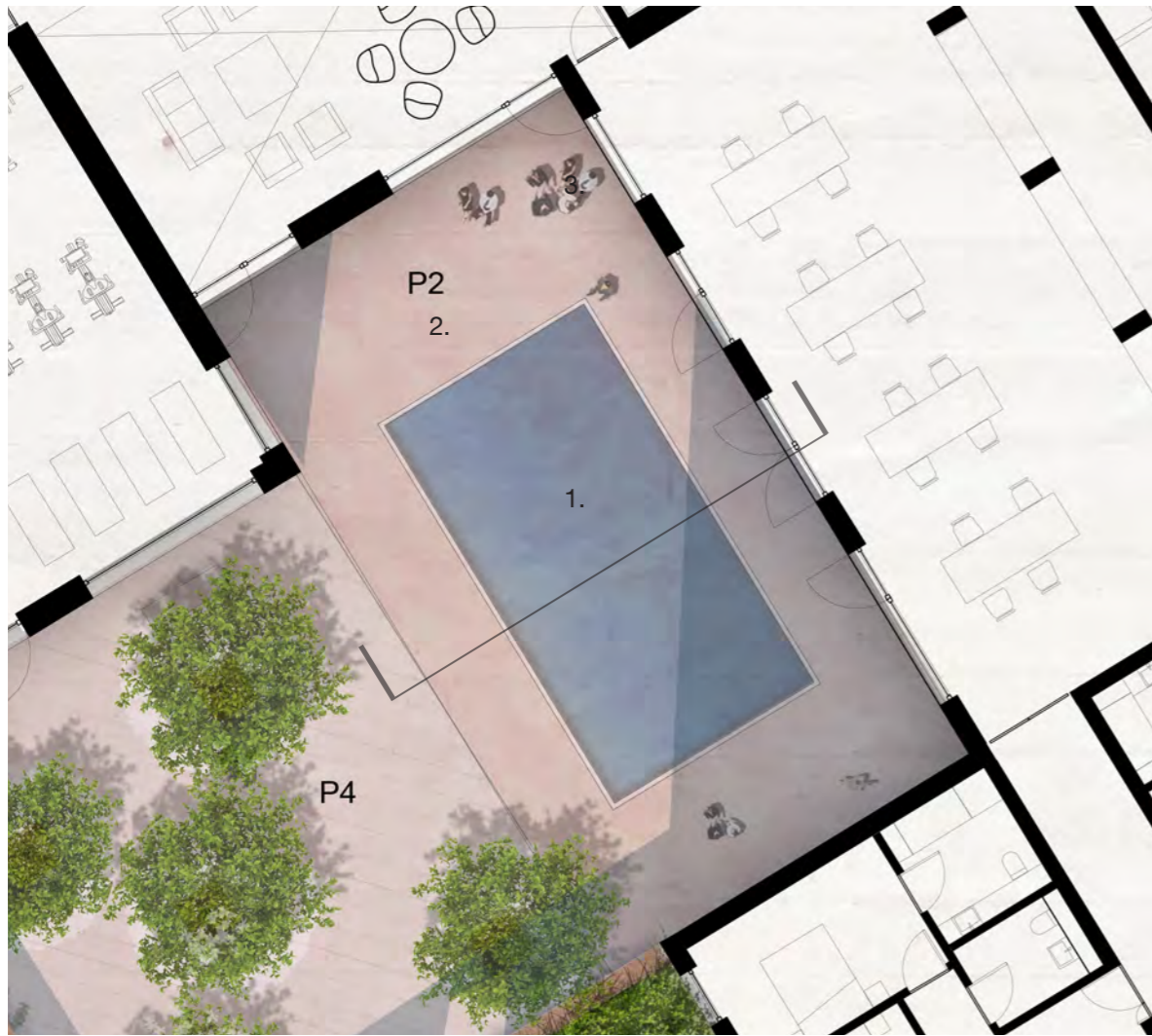
**Clockwise from top left**

Shared surface plan; Mountain Ash detail; section

## 6.2 Proposed Landscape Design

### Pool Court

6.2.10 This courtyard has been designed to be a tranquil, reflective and simply laid out space. The main feature is a central reflective skim pool.



### Key

- 1. Shallow skim pool
- 2. Terrazzo tiling
- 3. Outdoor seating

### Clockwise from top left

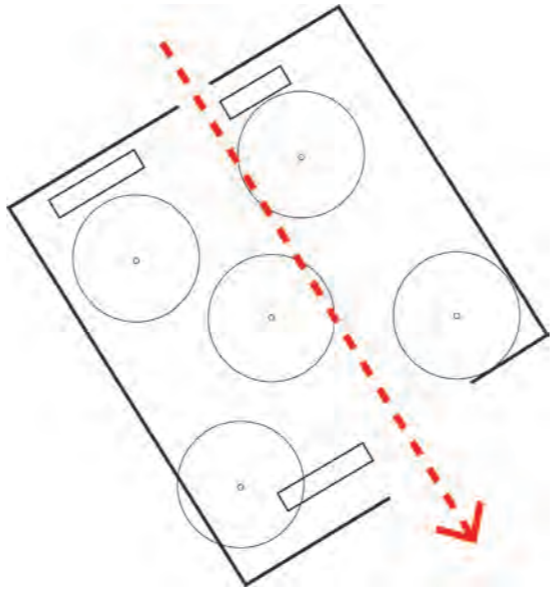
Arrivals court plan; circulation diagram;  
cherry blossom detail; concrete benches;  
section



**6.2 Proposed Landscape Design**

Grove Court

6.2.11 This courtyard will broadly consist of a simply-paved area with seating and a grove of five birch trees planted in it. The birch trees will provide a canopy overhead and the bark's textural qualities act as a counterpoint to the solidity of the building, floor and seats. Bird boxes could be installed on the trees to attract wildlife to the courtyard. Glimpses of the adjacent 'Pear Court' can be seen through the threshold.



- Key**
- 
- 1. Precast concrete paving

---

  - 2. Polished concrete benches

---

  - 3. Chinese Birch Trees (x3)

---

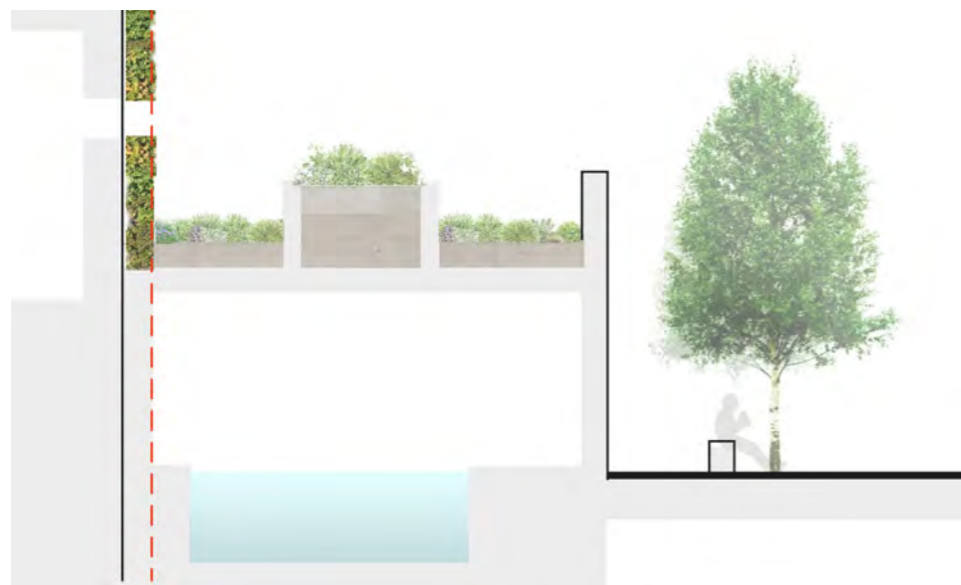
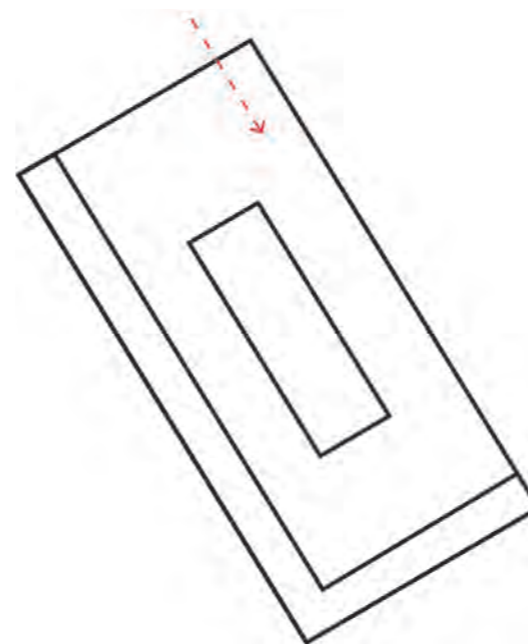
  - 4. Threshold to Pear Court

---
- Clockwise from top left**
- 
- Grove court plan; circulation diagram;
  - threshold; section

## 6.2 Proposed Landscape Design

### Elevated Herb Garden

6.2.12 This elevated herb garden will be accessible by staff and some residents. It is effectively a green roof filled with fragrant herbs and flowers. A thyme lawn covers the ground with stepping stones through it surrounded by raised herb beds.



### Key

- 1. Thyme lawn with inset stepping stones
- 2. Central raised herb bed
- 3. Screening planting

### Clockwise from top left

Grove court plan; circulation diagram; threshold; section

**6.2 Proposed Landscape Design**

Foraging Planting

6.2.13 Throughout the courtyards there will be opportunities for foraging, ranging from fruit and nut trees and fruit-bearing shrubs. This will create an interactive and sensorially stimulating element to the landscape.



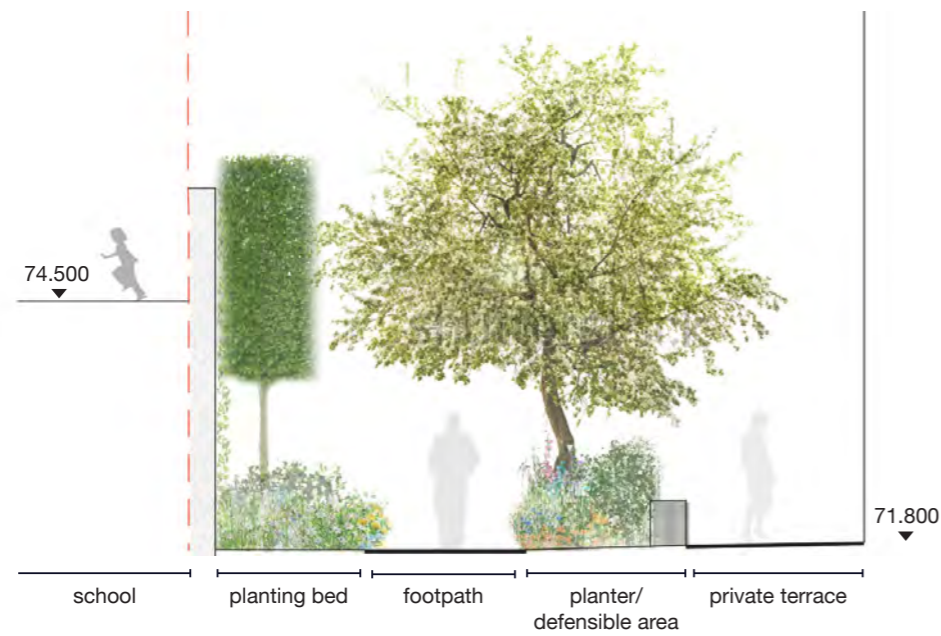
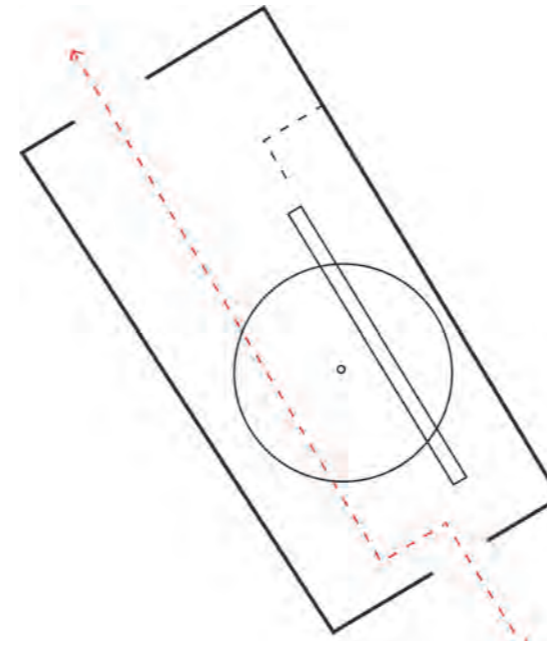
---

**Left**  
Foraging for nuts, fruit, herbs and edible plants

## 6.2 Proposed Landscape Design

### Pear Court

6.2.14 This courtyard is designed to be significantly 'greener' than the previously described courtyards. There is a simple path through the middle of the court flanked to one side by pleached trees and a bed filled with perennials and grasses. There are also small private patios to the other side of the space with a clear boundary defined with planting. The existing pear tree is to be replaced by a semi-mature heritage pear variety.



#### Key

1. Planting to include fruit bushes
2. Private terrace
3. Polished concrete seating
4. Pleached lime trees
5. Proposed pear tree
6. Precast concrete paving
7. Climbing Jasmine to boundary wall

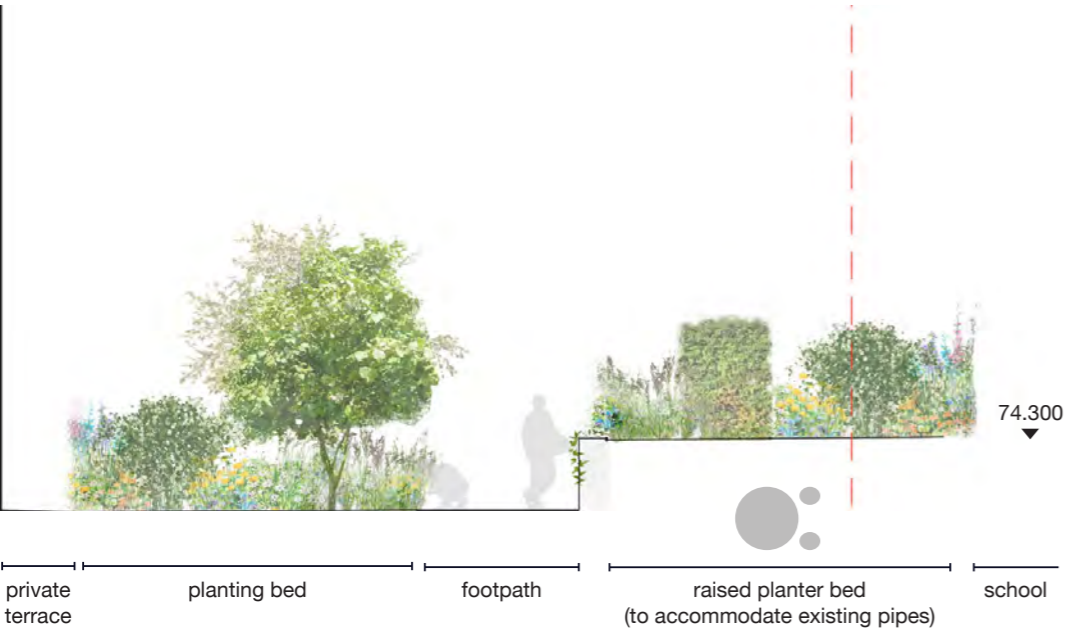
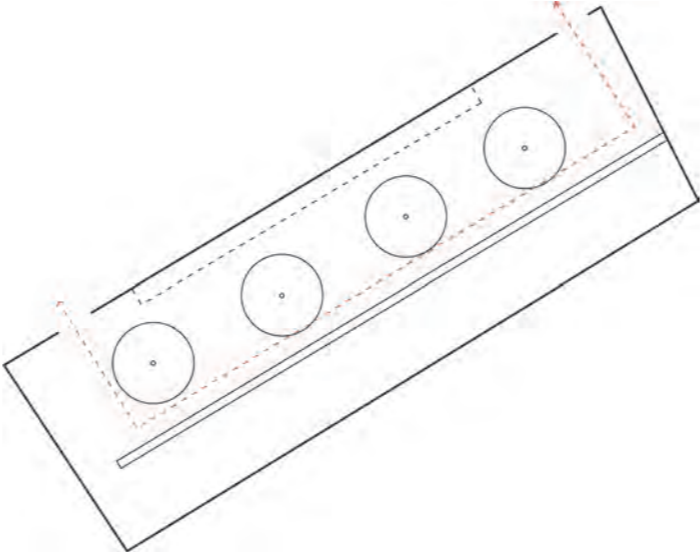
#### Clockwise from top left

Pear court plan; circulation diagram; pear blossom detail; pleached lime trees creating green screen to boundary wall; section

**6.2 Proposed Landscape Design**

Nuttery Court

6.2.15 To the south of the site the landscape gets slightly more naturalistic with taller grasses and some herbaceous material. The trees and shrubs are mostly nut varieties to give opportunities for foraging. Insect hotels and bird boxes will be installed to further encourage wildlife.



**Key**

- 1. Planting to include fruit bushes
- 2. Paved edge
- 3. Polished concrete seating
- 4. Fruit and nut trees
- 5. Hazel hedge

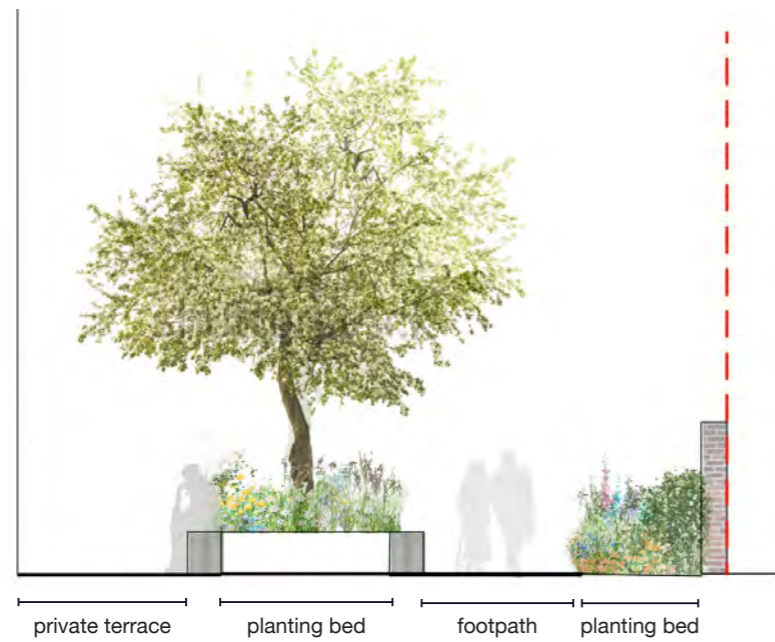
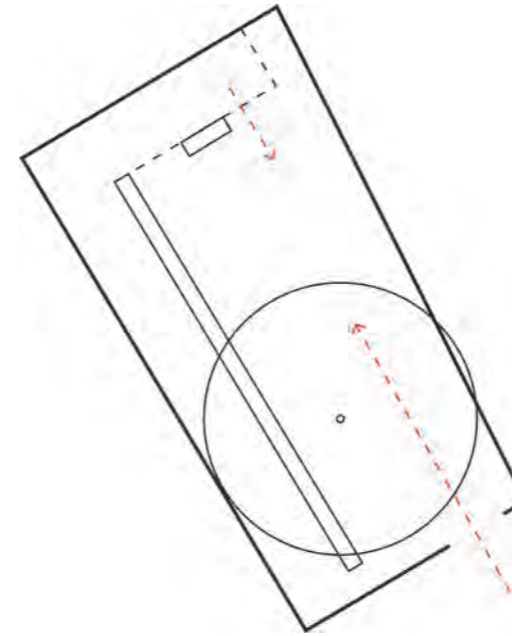
**Clockwise from top left**

Nuttery court plan; circulation diagram; high grasses; nut trees; section

## 6.2 Proposed Landscape Design

### Apple Court

6.2.16 The apple courtyard is designed to be a quiet, plant-filled space. The existing brick wall which is in a state of disrepair to the eastern boundary is to be rebuilt in the same location.



#### Key

- 1. Planting bed
- 2. Precast concrete paving
- 3. Polished concrete seating
- 4. Apple tree
- 5. Private terrace

#### Clockwise from top left

Apple court plan; circulation diagram; lush planting beds; threshold; section

**6.2 Proposed Landscape Design**

Roofscape

6.2.17 The roofscape to the proposed development can be considered as an extension to the landscape on the ground. The species used on the roof terraces should be selected to attract wildlife. The paved area to the terraces is kept to a minimum to maintain a significant vegetated patch that can make a real contribution to the surrounding city's ecosystem. Roof A and B are only accessible for maintenance. Roof C and D are accessible by residents.



---

**Left**

---

Roofscape plan

## 6.2 Proposed Landscape Design

Roofscape A: Sedum and Hedgerow

6.2.18 A carpet of sedum of different varieties will create a tapestry of different colours to be viewed from above.



Left

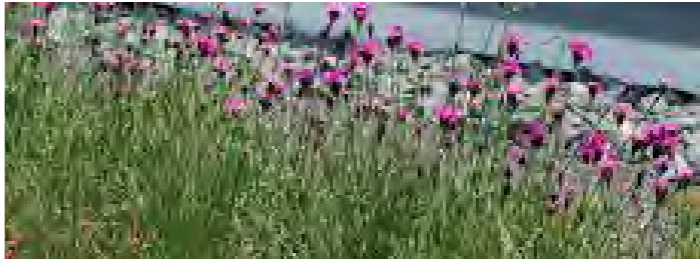
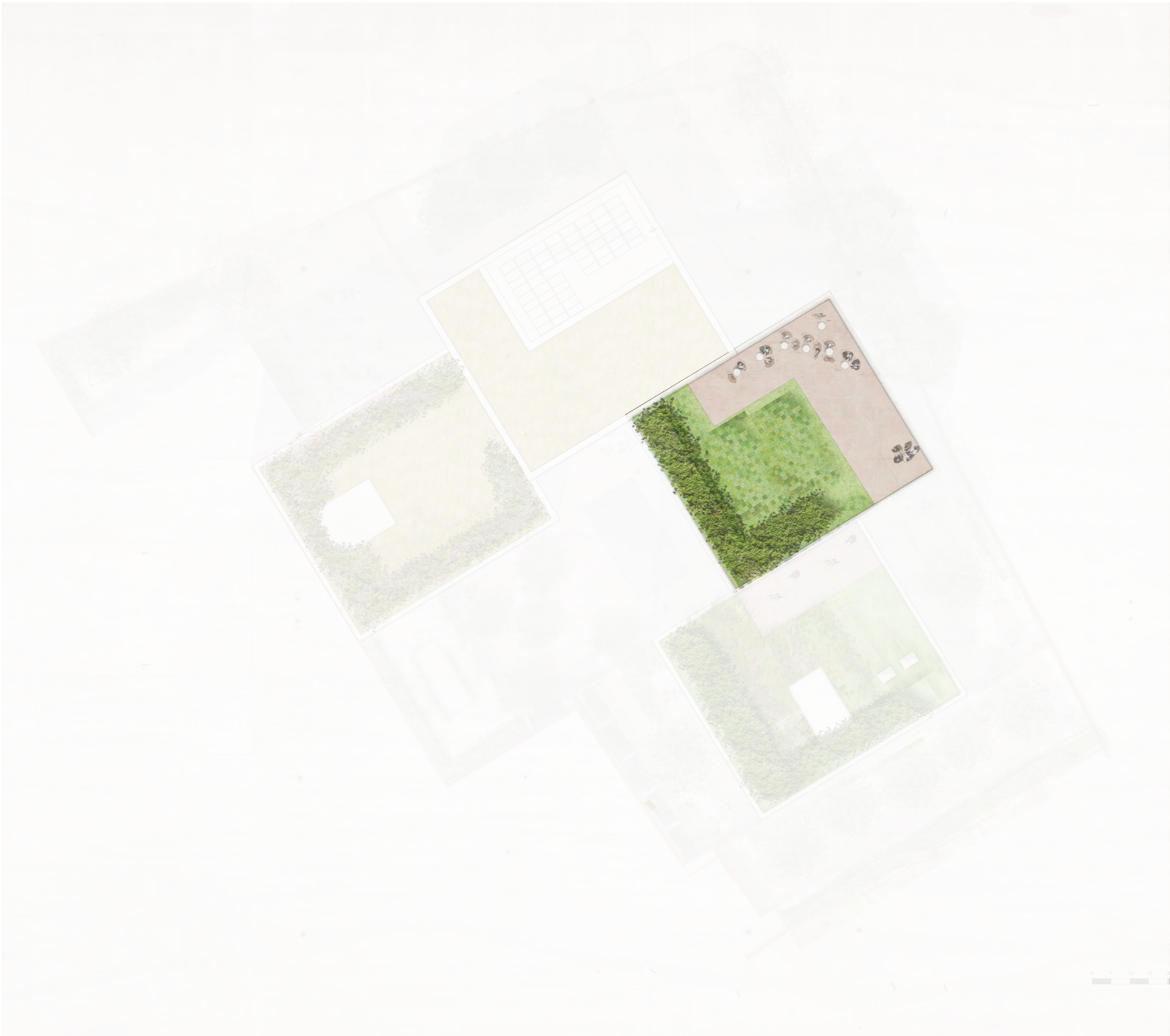
Roofscape A plan



**6.2 Proposed Landscape Design**

Roofscape C: Viewing Terrace

6.2.19 This roof comprises of a paved terrace with adjacent high-quality planting laid out in a geometric pattern. Views toward the school are screened and the user is guided to the south-east edge of the roof where the best views are.



**Left**  
Roofscape C plan

## 6.2 Proposed Landscape Design

Roofscape D: Wildlife Terrace

6.2.20 Taking cues from the adjacent nuttery and neighboring proposed roof gardens, the roof of block D will be partly accessible with most of the area given over to wildlife. It will incorporate a screening hedgerow, wildflower meadow and bee boxes.



Left

Roofscape D plan

## 6.2 Proposed Landscape Design

6.2.21 View within walled garden spaces to the communal courtyard beyond



---

**Left**

---

**Visualisation**  
View from walled garden