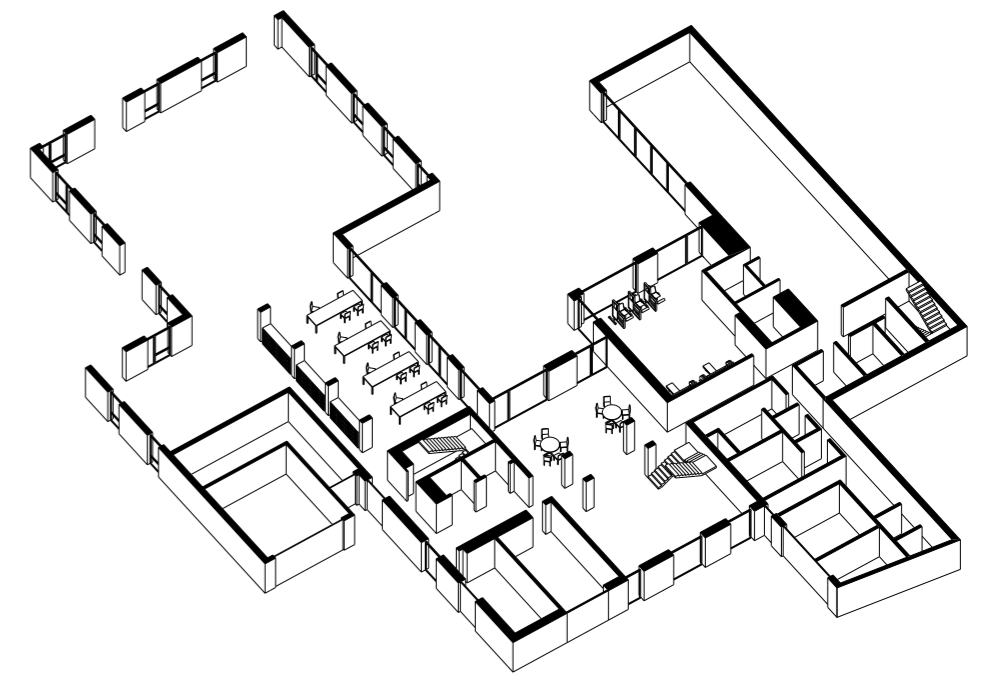


## 6.1 The Proposed Plans

### Lower Ground Floor Plan

6.1.5 The lower ground floor includes a well-being centre and residents' lounge. The lower ground floor benefits from the many communal spaces on offer to the older residents of the scheme. Each shared room is connected visually or physically to the external garden rooms adjacent.

6.1.6 The lower ground floor plan includes a swimming pool, thermal spa, treatment rooms, gym, studio space and resident's lounge. There are garden flats to the south that enjoy access to the shared communal gardens.



Above from left

Plan  
Ground floor plan

Axonometric  
Ground floor axonometric diagram

## 6.1 The Proposed Plans

### Central Courtyard

6.1.7 The lower ground floor focuses on the central courtyard, the heart of the scheme. This courtyard includes a reflective pool and a cluster of birch trees. The courtyard is surrounded by communal spaces, including the double-height entrance lobby, the swimming pool, gym and residents' lounge.



---

Above left

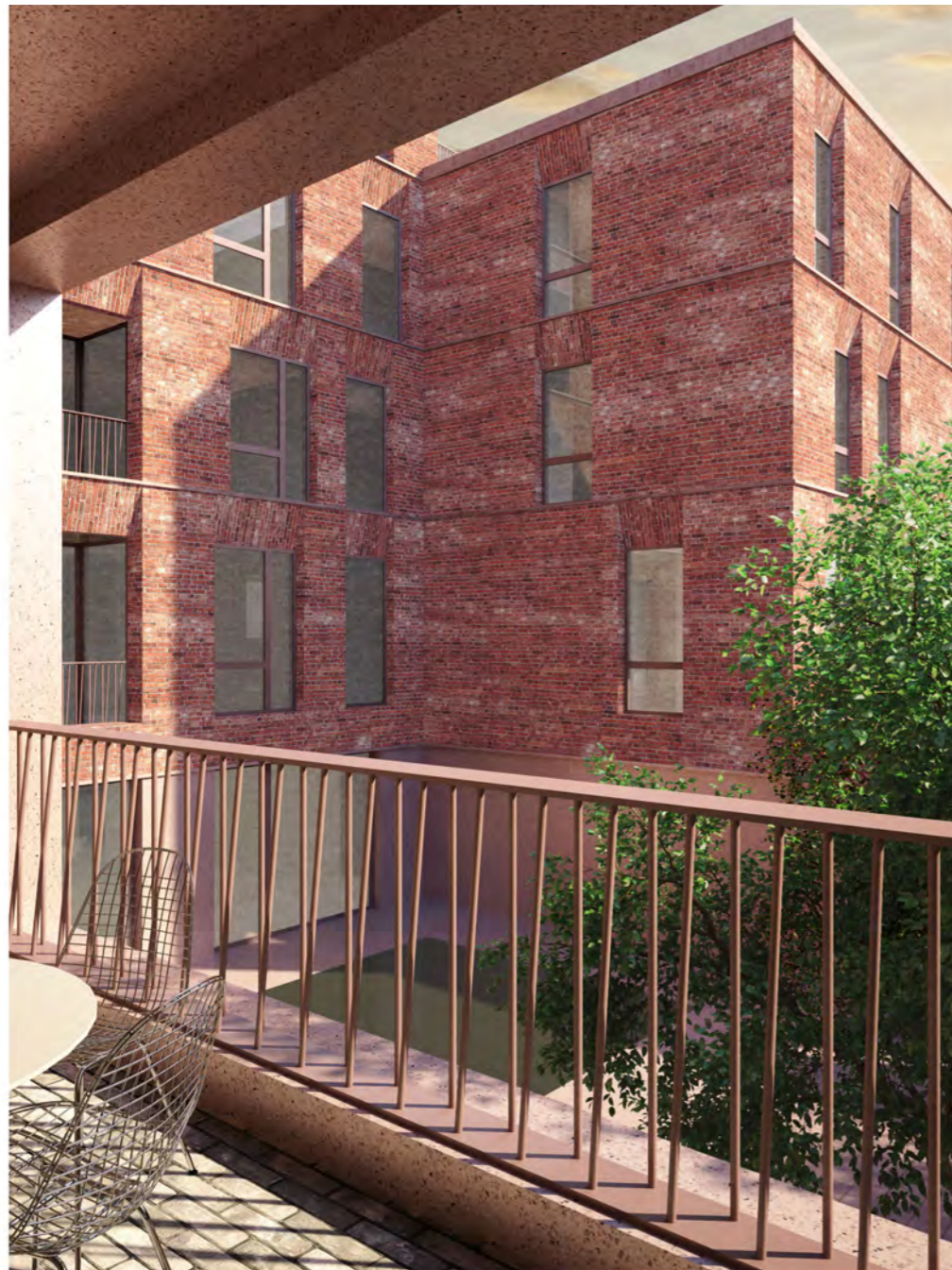
Visualization

Pool court view looking north-east

## 6.1 The Proposed Plans

Central Courtyard

6.1.8 Views out from communal spaces to the main communal courtyard



---

**Clockwise from left**

---

**Visualisation**

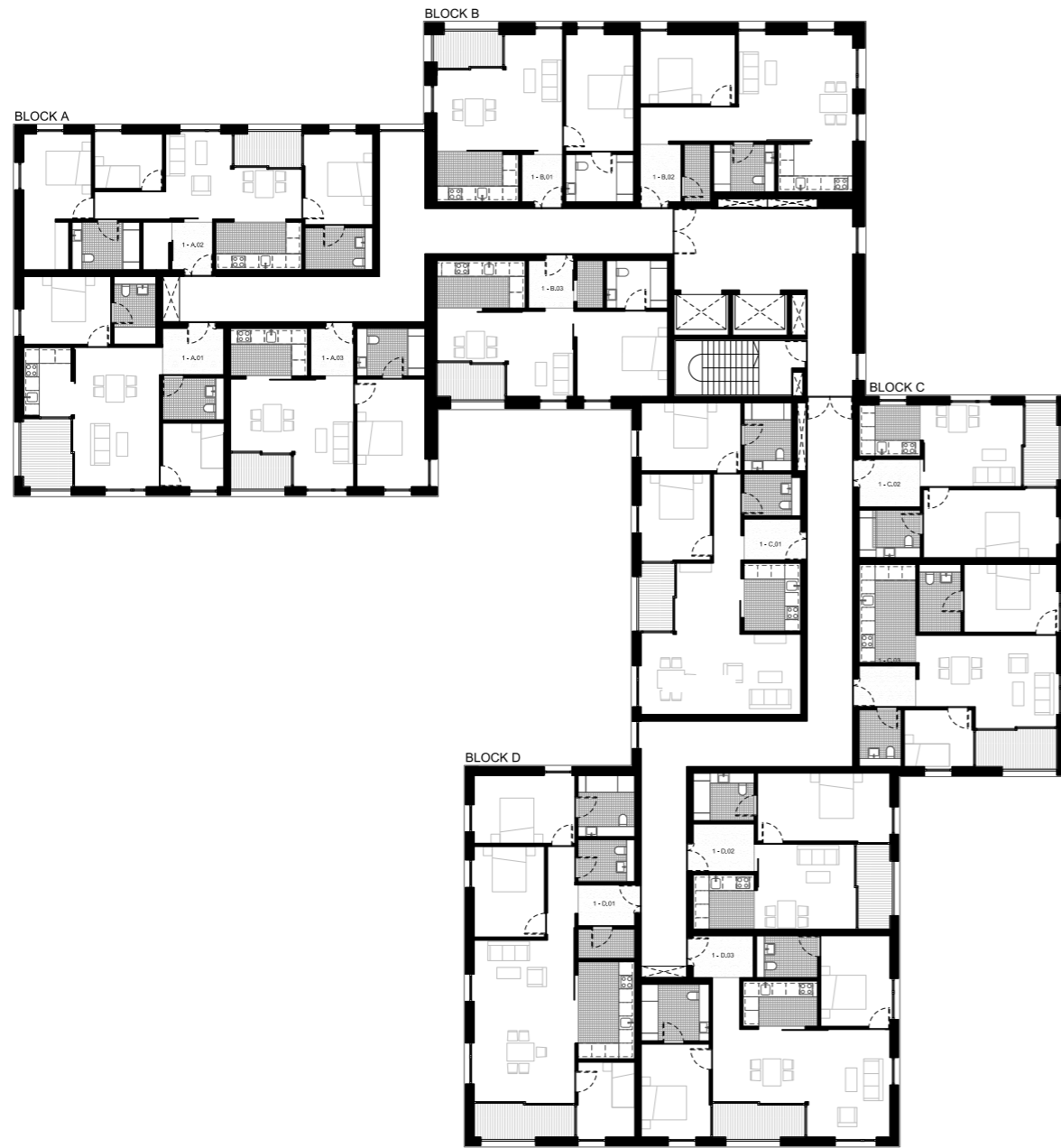
Loggia looking down to the central courtyard

---

**Visualisation**

View from inside residents lounge looking out to the communal courtyard

1.



## 6.1 The Proposed Plans

First and Second Floor

6.1.9 The plan shows three older residents' flats per block. All communal corridors are naturally lit, with views to the north and south. The corridors allow for break out space - a moment to rest and enjoy the view while visiting friends within the home.

2.



3.

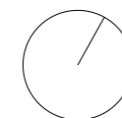


Clockwise from left

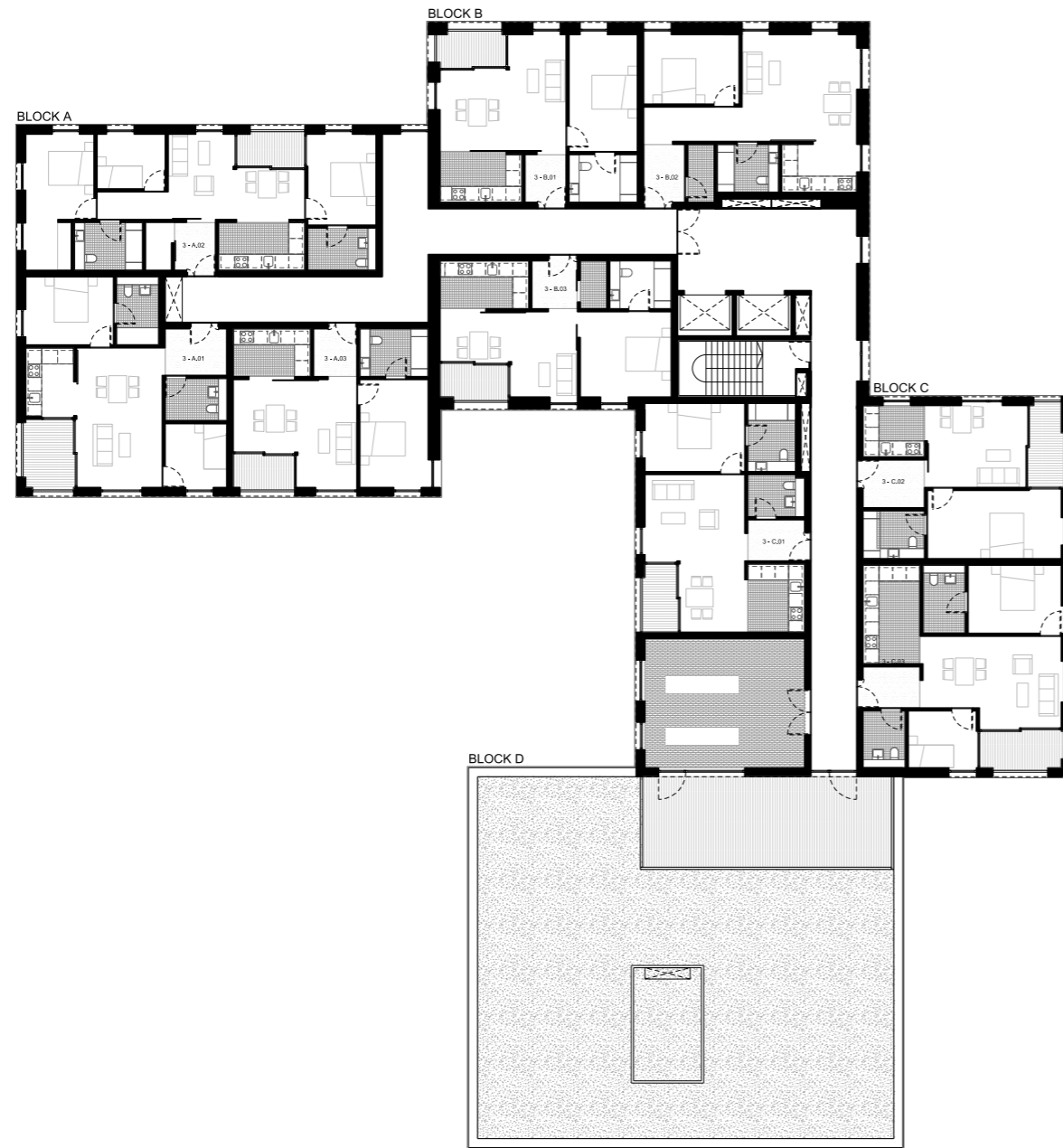
1.  
First floor plan

2.  
Light-filled, generous circulation spaces

3.  
Views out across the site from corridor



1.



## 6.1 The Proposed Plans

### Third Floor Plan

6.1.10 The third floor features a communal room to hold events and a place to gather. It also provides access to a large communal terrace to the south, celebrating views towards the city

2.



3.



Clockwise from left

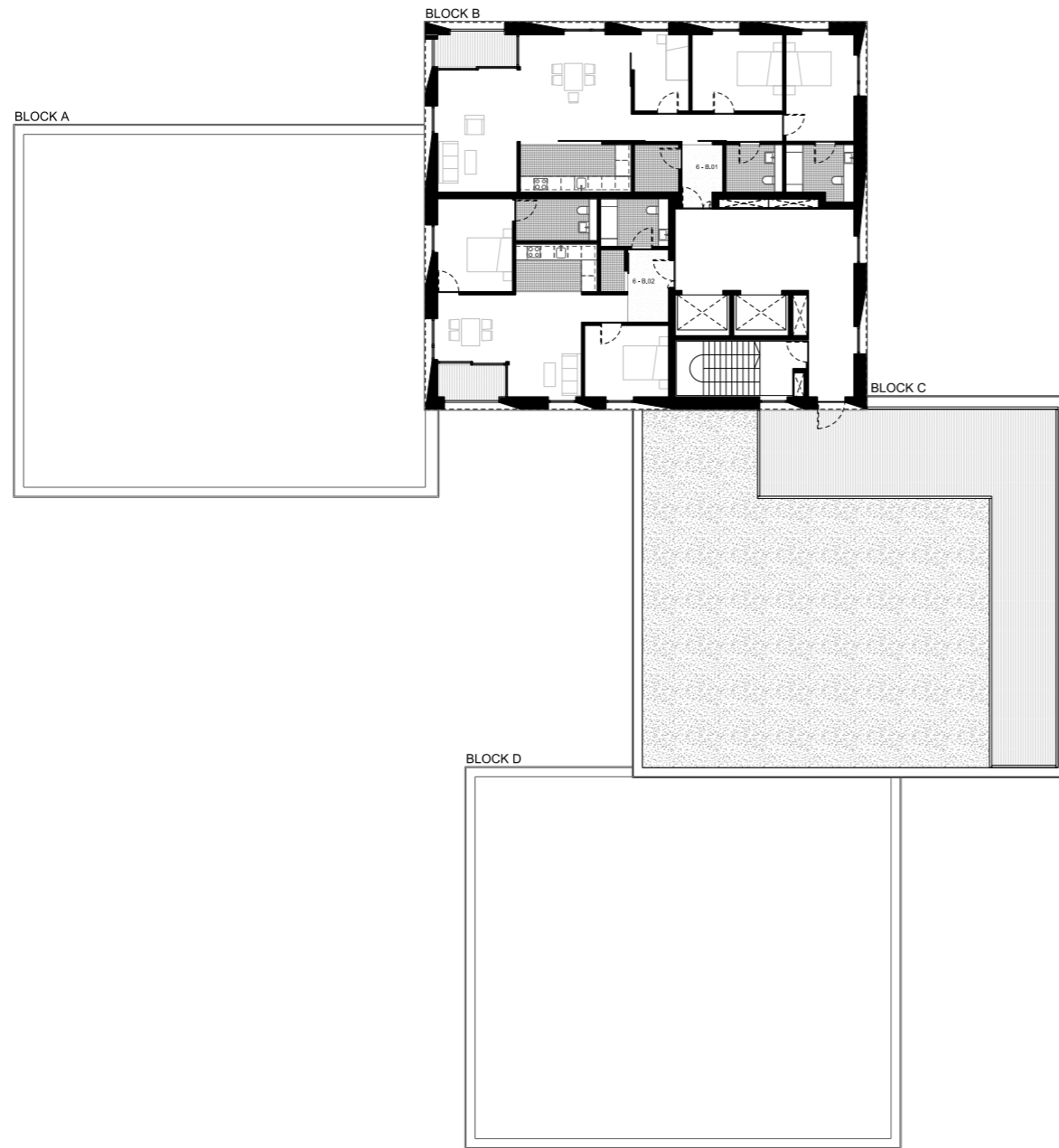
1.  
Third floor plan

2.  
Light-filled, generous communal space

3.  
Roof garden



1.



## 6.1 The Proposed Plans

### Sixth Floor Plan

6.1.11 The sixth floor offers the main communal roof terrace of the proposal, with hard landscaping to allow for a place to sit and enjoy the view.

2.



3.

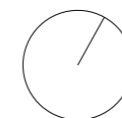


Clockwise from left

1.  
Sixth floor plan

2.  
Communal terrace

3.  
Landscaped roof garden



## 6.2 Proposed Landscape Design

6.2.1 The landscape plan features a series of unique courtyards and a gradation of hard surfaces to greenery from north to south. The courtyards addressing the street are mostly paved whilst those to the south of the site have significantly more space given over to planting.

6.2.2 Each courtyard is designed to have a distinct character so that there is a sense of progression, contrast and variety as one moves through the landscape and between the courtyards.



### Key

1. Arrivals Court (open to pavement) with single Japanese Great White Cherry
2. Tree Well Court a sunken, shady plant-filled space
3. Shared surface vehicular access and service entrance
4. Pool Court with central reflective water feature
5. Grove Court with clear-stemmed Chinese birches
6. Elevated Herb Garden with thyme lawn and raised herb bed
7. Pear Court with private terrace and single pear tree
8. Nuttery Court with foraging areas
9. Apple Court with private terrace and single apple tree

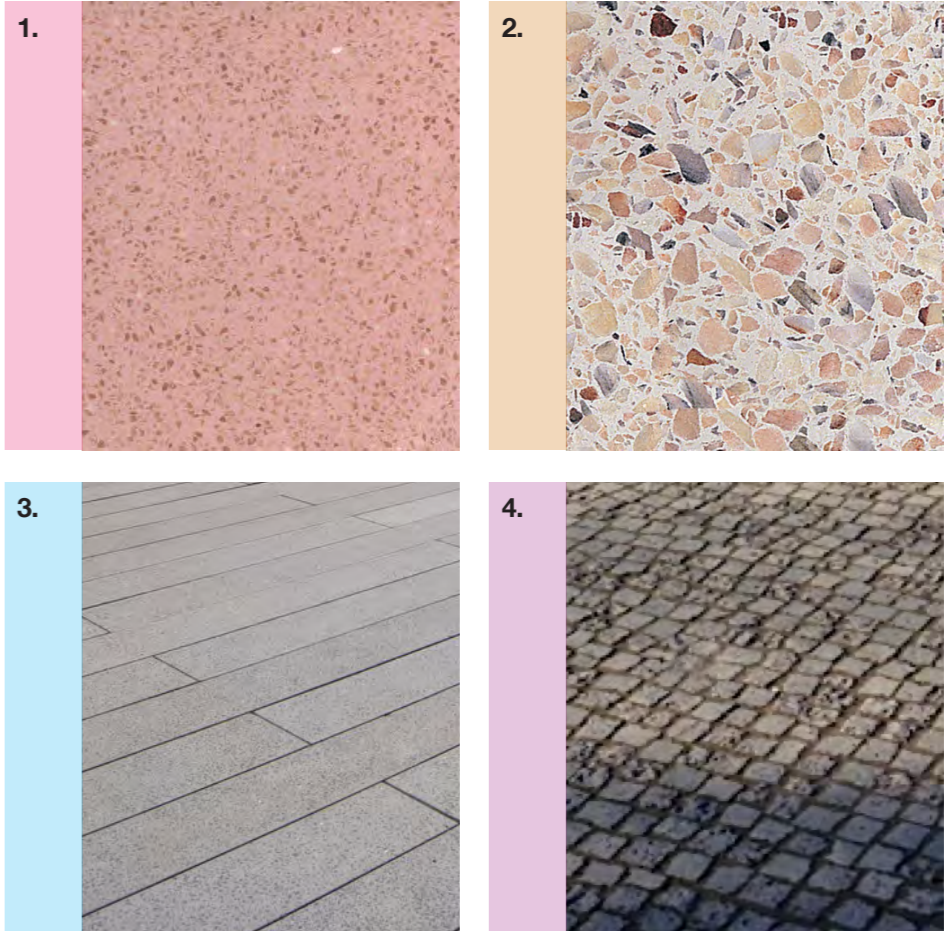
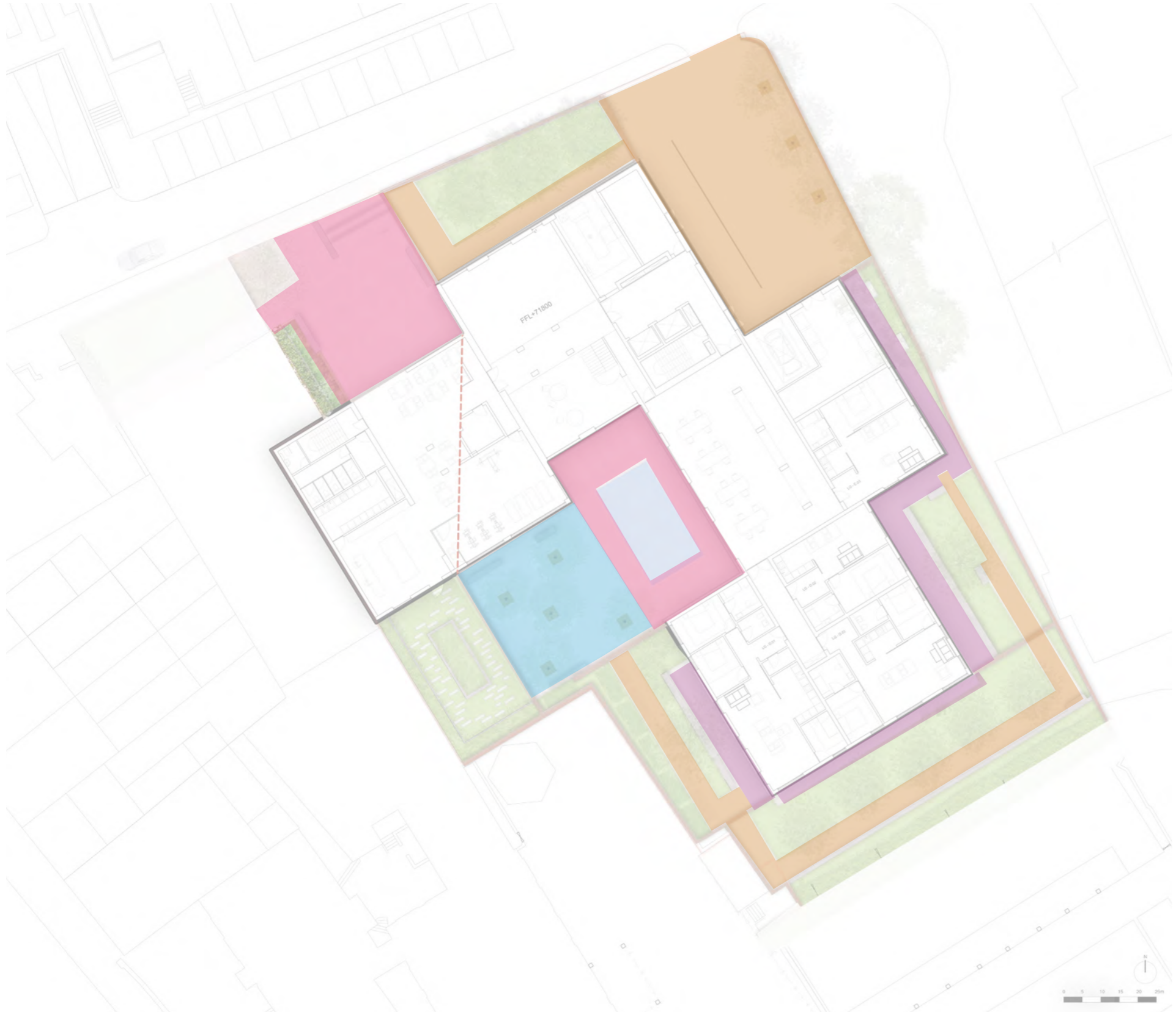
### Left

Combined ground and lower ground floor landscape plan

**6.2 Proposed Landscape Design**

Exterior Finishes Paving

6.2.3 The exterior paving materials reflect the tone and color of the building materials. The paving is primarily high quality concrete with exposed aggregate or 'terrazzo'.



- Key**
- 
- 1. Terrazzo tiles  
to entrance courtyard and pool  
200 x 200 x 40mm

---

  - 2. Precast concrete pavers  
to shared surface, path and herb garden  
200 x 300mm

---

  - 3. Large format precast concrete pavers  
to grove court  
600 / 900 x 900 x 1200mm

---

  - 4. Small granite setts  
to private patios  
50 - 80mm irregular shape

---

**Left**

---

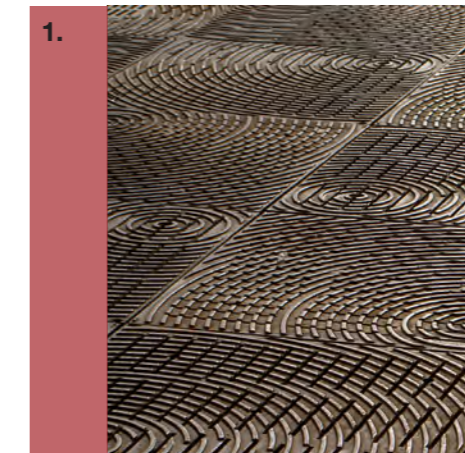
Combined ground and lower ground floor  
landscape plan - exterior finishes



## 6.2 Proposed Landscape Design

### Landscape Furniture

6.2.4 The proposed landscape design incorporates a number of furniture elements, notably generous concrete benches positioned at strategic points around the gardens to offer resting and viewing points.



#### Key

- 1. Steel grilles to tree pits
- 2. Concrete bench
- 3. Steel railings (to match balcony)

#### Left

Combined ground and lower ground floor landscape plan - landscape furniture