

Canopy

Installation :

Project number : UCLH
Customer : DSSR
Processed by : Neil Thompson
Date : 07.02.2014

These plots represent Thorn products under given conditions. Changes to environment, calculation software accuracy and on site measurement mean real installations may differ from these predictions. Thorn Lighting Ltd takes no design responsibility where the company has not been provided with information pertinent to this design. This design information constitutes guidance only. Substitutions for anything detailed here in invalidates these plots. © Thorn Lighting Limited:

The following values are based on exact calculations on calibrated lamps, luminaires and their arrangement. In practice, gradual divergences can occur.

Guarantee claims for luminaire data are excluded.

Relux and the luminaire manufacturers accept no liability for consequential damage and damage which is occasioned to the user or to third parties.

Object : Canopy
Installation :
Project number : UCLH
Date : 07.02.2014

1 Luminaire data

1.1 Thorn, ADELIE 51W LED 5200K CL2 [STD] (96254108)

1.1.1 Data sheet

Manufacturer: Thorn

96254108 ADELIE 51W LED 5200K CL2 [STD]

Post-top mounted, indirect lighting lantern for 32 x 1.1W LEDs with pre-wired driver. Class II electrical, IP65, IK08 impact resistance. Base in cast aluminium, finished sandy grey 900. Canopy in spun aluminium, powder coated sandy grey 900. PMMA acrylic lens. Reflector in aluminium, powder coated white with Teflon coating. Supplied complete, in one box. Complete with 5300K LED, LED driver and 3.5m cable.

To be post-top mounted on dedicated columns.

Dimensions: Ø223/774 x 312 mm

Total power: 51 W

Weight: 7.5 kg

Scx: 0.094m²

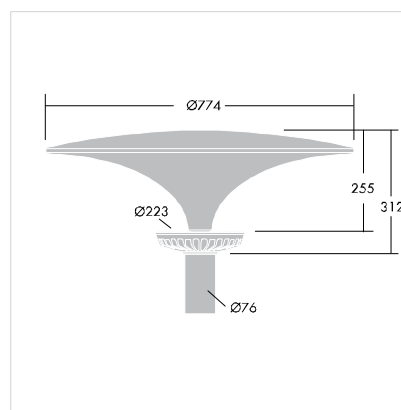
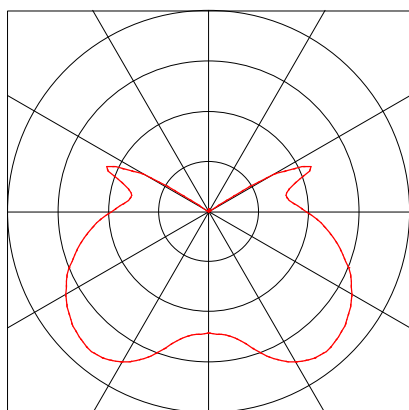
Luminaire data

Luminaire efficiency : 100%
Luminaire efficacy : 33.33 lm/W
Classification : B21 ↓75.6% ↑24.4%
CIE Flux Codes : 27 56 81 76 100
UGR 4H 8H (20%, 50%, 70%)
C0 / C90 : 14.9 / 14.9
Control gear :
System power : 51 W
Diameter : 774 mm
Height : 312 mm

Equipped with

Quantity : 1
Designation :

Power : 51 W
Colour :
Luminous flux : 1700 lm
Colour reproduction :



Object : Canopy
Installation :
Project number : UCLH
Date : 07.02.2014

1 Luminaire data

1.2 Thorn, ADELIE 51W LED 5200K CL2 [STD] (96254108)

1.2.1 Data sheet

Manufacturer: Thorn

96254108 ADELIE 51W LED 5200K CL2 [STD]

Post-top mounted, indirect lighting lantern for 32 x 1.1W LEDs with pre-wired driver. Class II electrical, IP65, IK08 impact resistance. Base in cast aluminium, finished sandy grey 900. Canopy in spun aluminium, powder coated sandy grey 900. PMMA acrylic lens. Reflector in aluminium, powder coated white with Teflon coating. Supplied complete, in one box. Complete with 5300K LED, LED driver and 3.5m cable.

To be post-top mounted on dedicated columns.

Dimensions: Ø223/774 x 312 mm

Total power: 51 W

Weight: 7.5 kg

Scx: 0.094m²

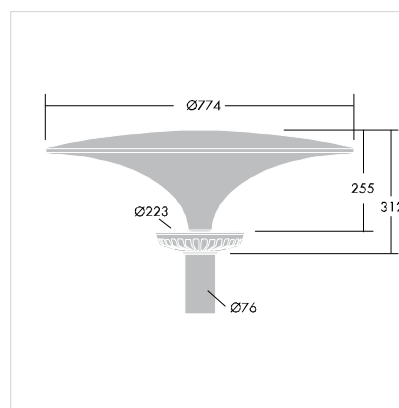
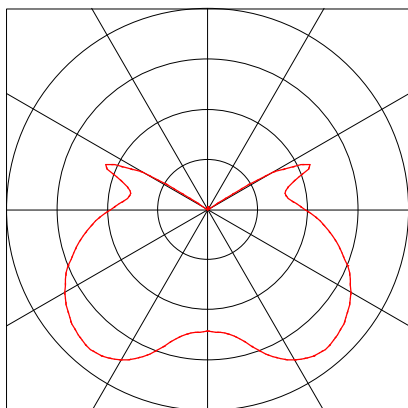
Luminaire data

Luminaire efficiency : 100%
Luminaire efficacy : 33.33 lm/W
Classification : B21 ↓75.6% ↑24.4%
CIE Flux Codes : 27 56 81 76 100
UGR 4H 8H (20%, 50%, 70%)
C0 / C90 : 14.9 / 14.9
Control gear :
System power : 51 W
Diameter : 774 mm
Height : 312 mm

Equipped with

Quantity : 1
Designation :

Power : 51 W
Colour :
Luminous flux : 1700 lm
Colour reproduction :



Object : Canopy
 Installation :
 Project number : UCLH
 Date : 07.02.2014

1 Luminaire data

1.3 Thorn, SATIN L660 24L35 20X36° 830 IN ... (96260779)

1.3.1 Data sheet

Manufacturer: Thorn

96260779 SATIN L660 24L35 20X36° 830 IN [STD]

A discrete linear floodlight for wall washing applications. 1666lm LED package with integral. Body: painted anodised aluminium. Sides: grey plastic. Enclosure: UV stabilised polycarbonate. Stirrup: stainless steel 304L. Surface mounted with compact stirrups (supplied), wall mounted with optional extension stirrup, recessed mounted with optional ground recessing box. Class II electrical, IP67 optical and gear compartment. Electrical connection with H05RNF cable at one end. Light distribution 20 x 36°. Complete with 3000K LED

Dimensions: 663 x 56 x 93 mm

Total power: 34 W

Weight: 1.5 kg

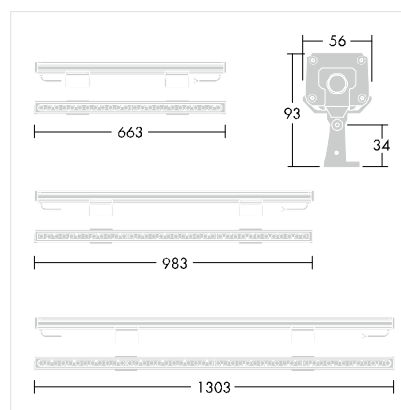
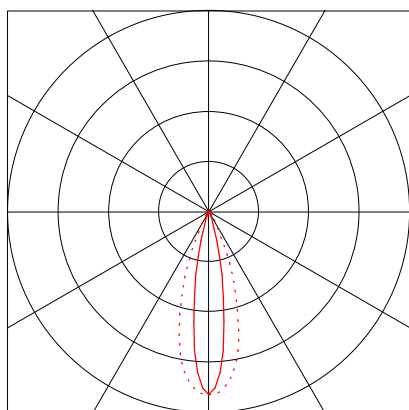
Luminaire efficacy: 49 lm/W

Luminaire data

Luminaire efficiency : 99.5%
 Luminaire efficacy : 48.76 lm/W
 Classification : A80 ↓100.0% ↑0.0%
 CIE Flux Codes : 91 97 99 100 99
 UGR 4H 8H (20%, 50%, 70%)
 C0 / C90 : 13.9 / 14.5
 Control gear :
 System power : 34 W
 Length : 663 mm
 Width : 56 mm
 Height : 93 mm

Equipped with

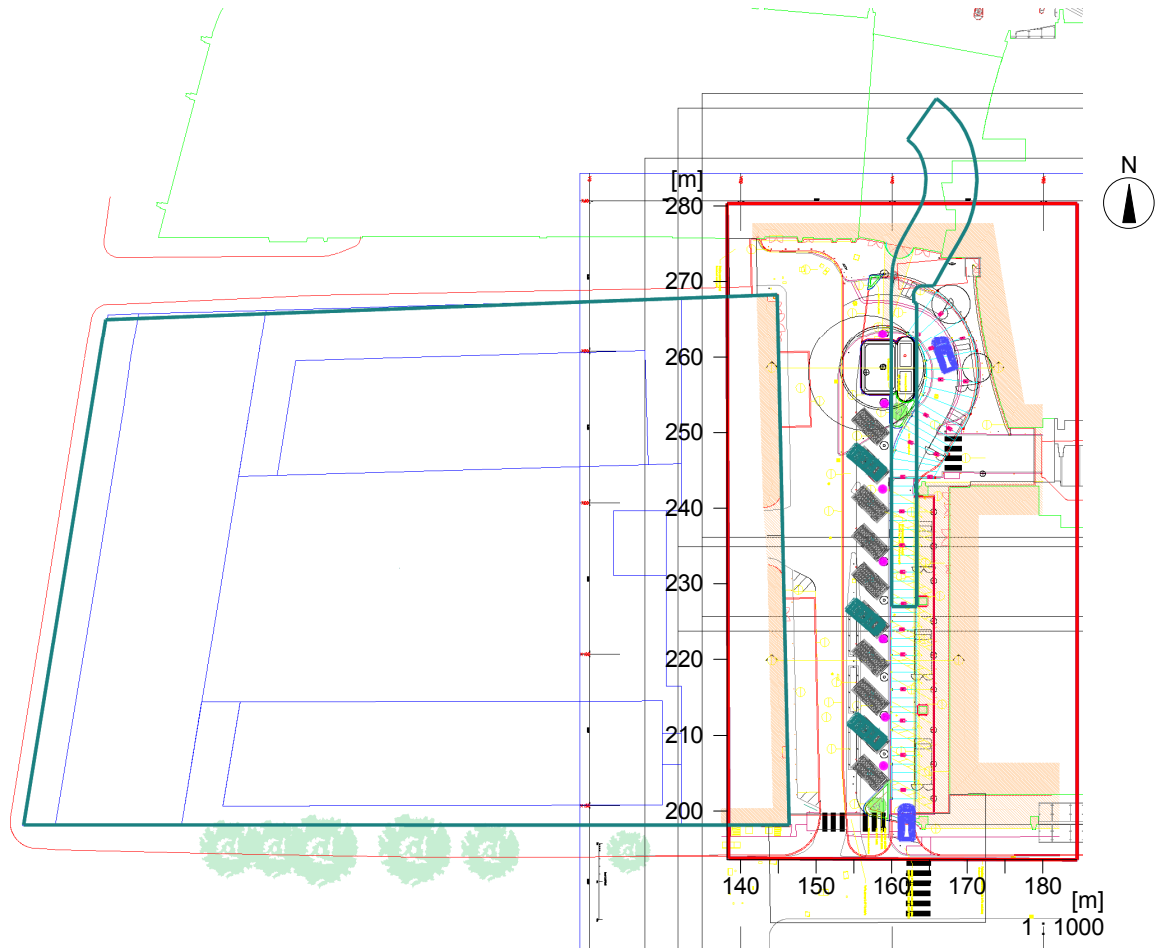
Quantity : 1
 Designation : LED_1666
 Power : 29 W
 Colour : 3000
 Luminous flux : 1666 lm
 Colour reproduction :



2 Exterior 1

2.1 Description, Exterior 1

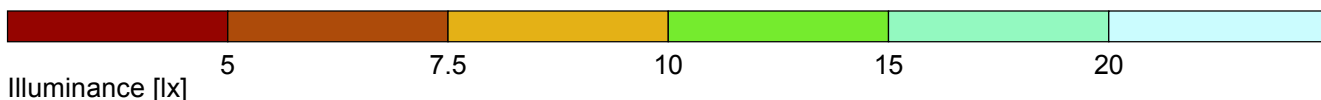
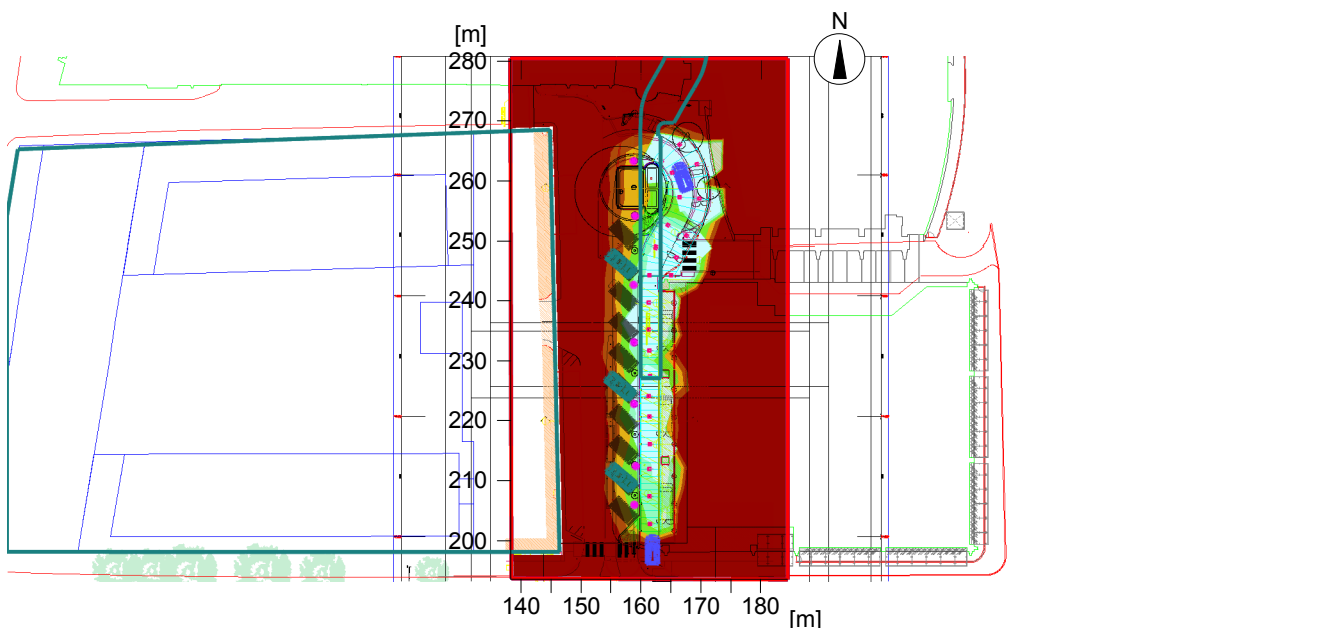
2.1.1 Floor plan



2 Exterior 1

2.2 Summary, Exterior 1

2.2.1 Result overview, Evaluation area 1



General



Calculation algorithm used	Average indirect fraction
Maintenance factor	0.80
Total luminous flux of all lamps	51884 lm
Total power	1173.0 W
Total power per area (4002.18 m ²)	0.29 W/m ² (2.58 W/m ² /100lx)

Evaluation area 1

Reference plane 1.1

	Horizontal
Em	11.4 lx
Emin	0 lx
Emin/Eav (Uo)	---
Emin/Emax (Ud)	---
Position	0.00 m

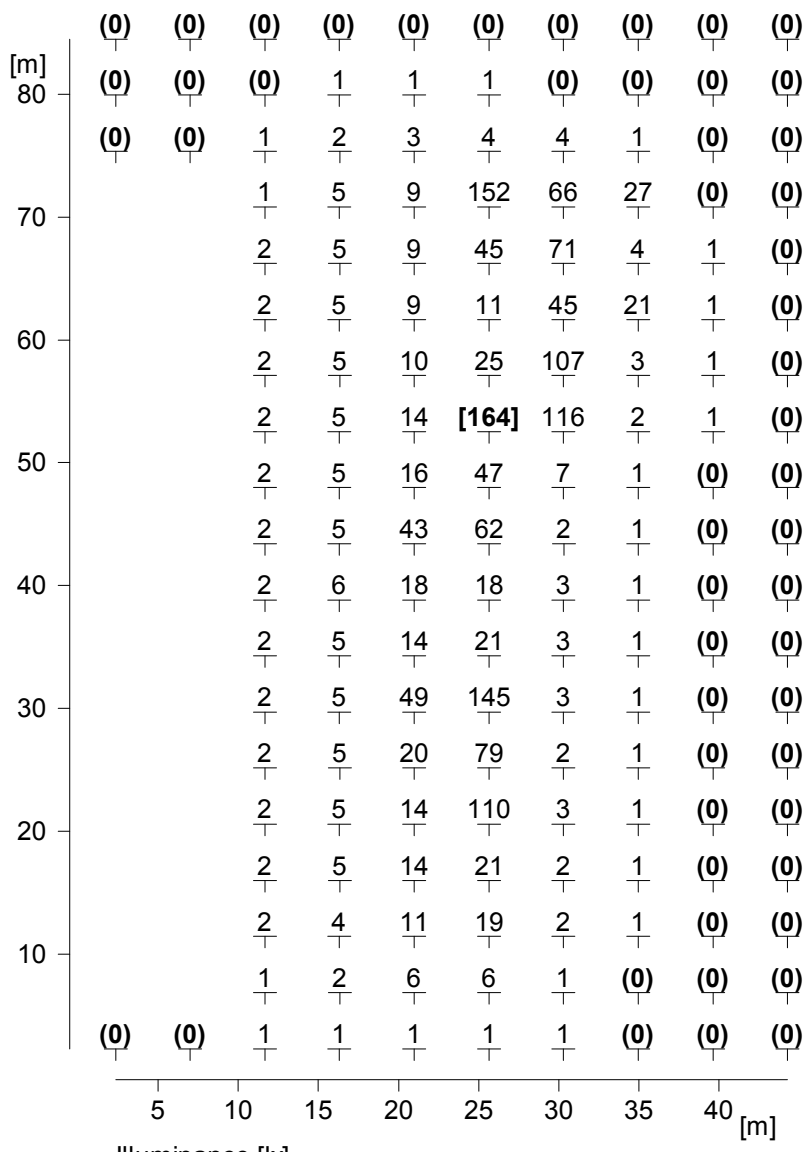
Type No.\Make

	Thorn	
2	7	Order No. : 96254108
		Luminaire name : ADELIE 51W LED 5200K CL2 [STD]
		Equipment : 1 x LED_Adelie_1700 51 W / 1700 lm
4	24	Order No. : 96260779
		Luminaire name : SATIN L660 24L35 20X36° 830 IN [STD]
		Equipment : 1 x LED_1666 29 W / 1666 lm

2 Exterior 1

2.3 Calculation results, Exterior 1

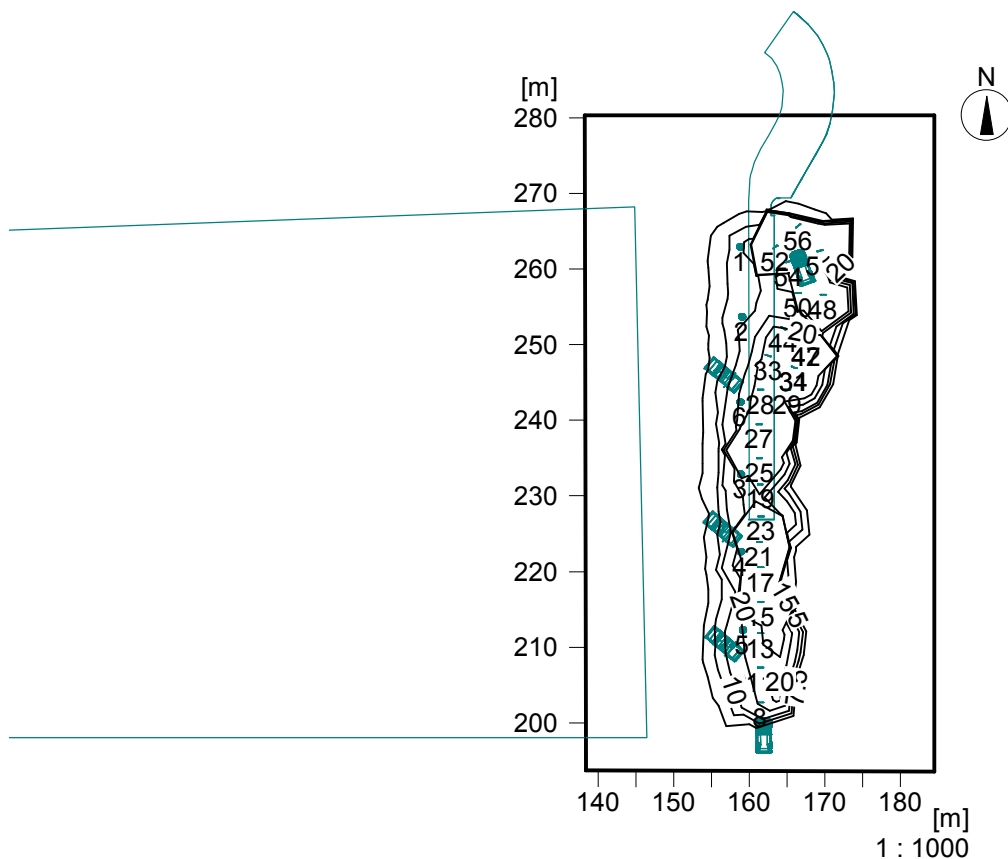
2.3.1 Table, Reference plane 1.1 (E)



Height of the reference plane	:	0.00 m
Average illuminance	Eav	: 11 lx
Minimum illuminance	Emin	: 0 lx
Maximum illuminance	Emax	: 164 lx
Uniformity Uo	Emin/Eav	: ---
Diversity Ud	Emin/Emax	: ---

2.3 Calculation results, Exterior 1

2.3.2 Isolines representation, Reference plane 1.1 (E)

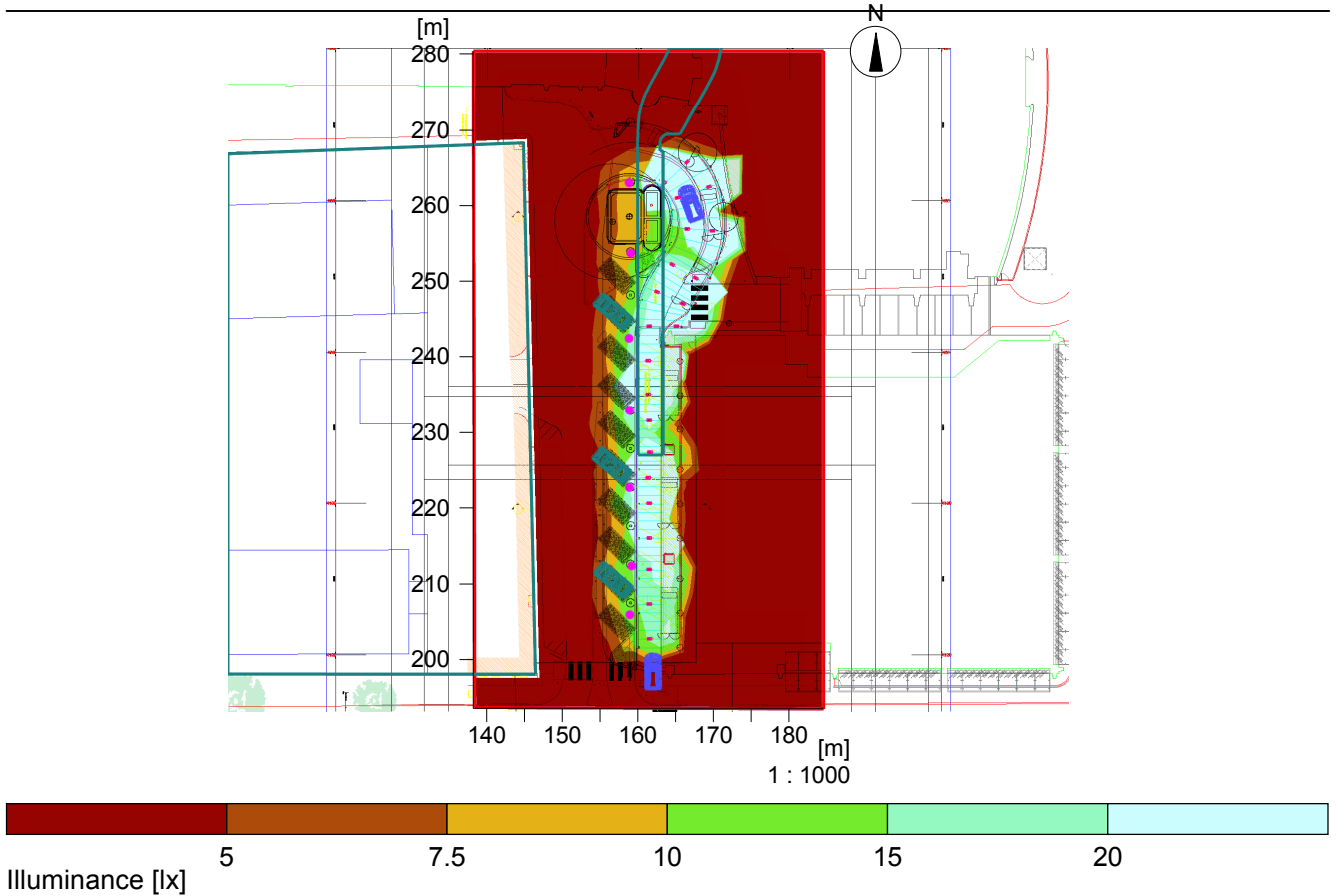


Illuminance [lx]

Height of the reference plane	:	0.00 m
Average illuminance	Eav	: 11 lx
Minimum illuminance	Emin	: 0 lx
Maximum illuminance	Emax	: 164 lx
Uniformity U _o	Emin/Eav	: ---
Diversity U _d	Emin/Emax	: ---

2.3 Calculation results, Exterior 1

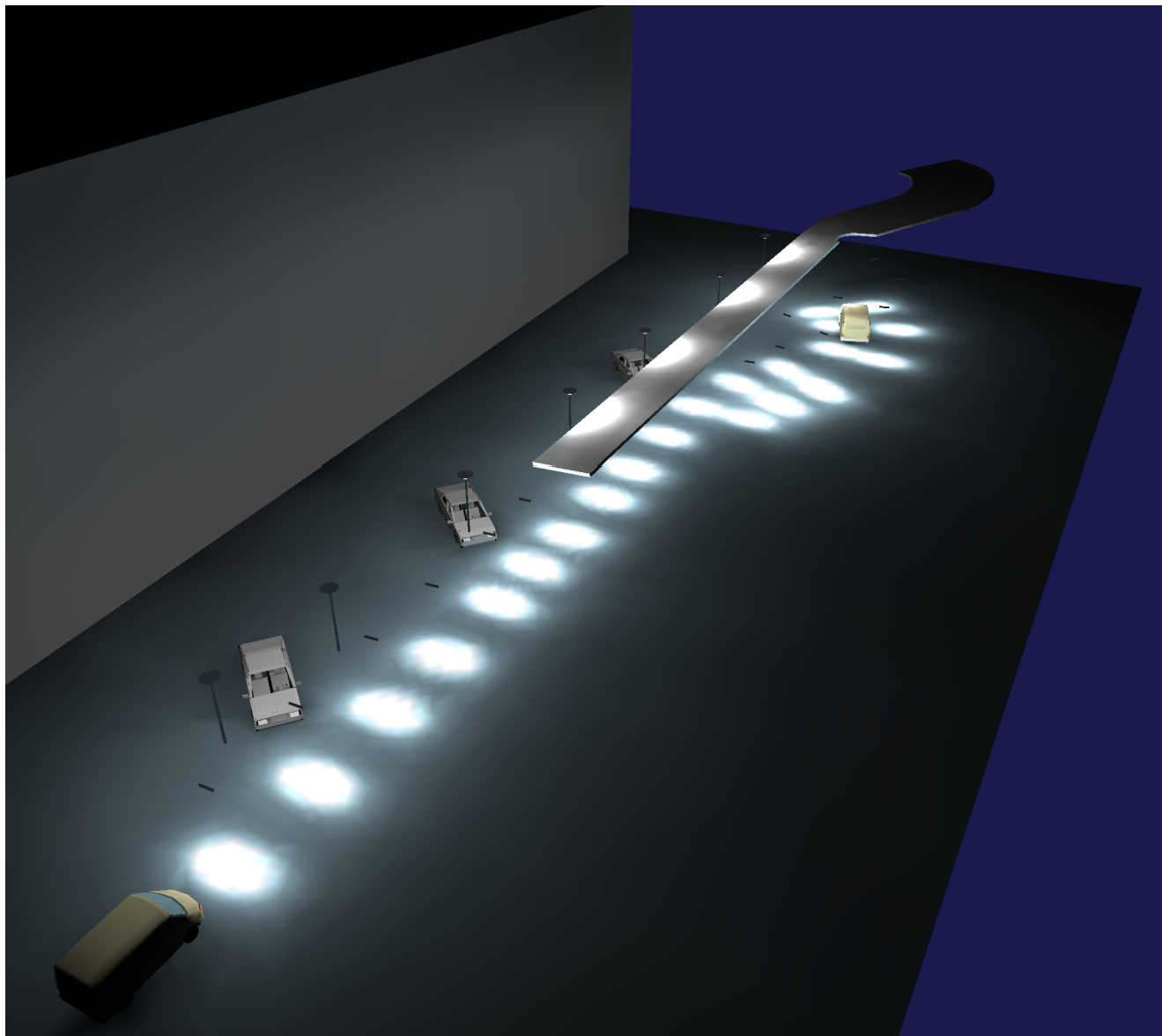
2.3.3 Pseudo colours, Reference plane 1.1 (E)



Height of the reference plane		: 0.00 m
Average illuminance	Eav	: 11 lx
Minimum illuminance	Emin	: 0 lx
Maximum illuminance	Emax	: 164 lx
Uniformity U _o	Emin/Eav	: ---
Diversity U _d	Emin/Emax	: ---

2.3 Calculation results, Exterior 1

2.3.4 3D luminance, View 1



Luminance in the scene

Minimum: : 0 cd/m²

Maximum: : 104 cd/m²