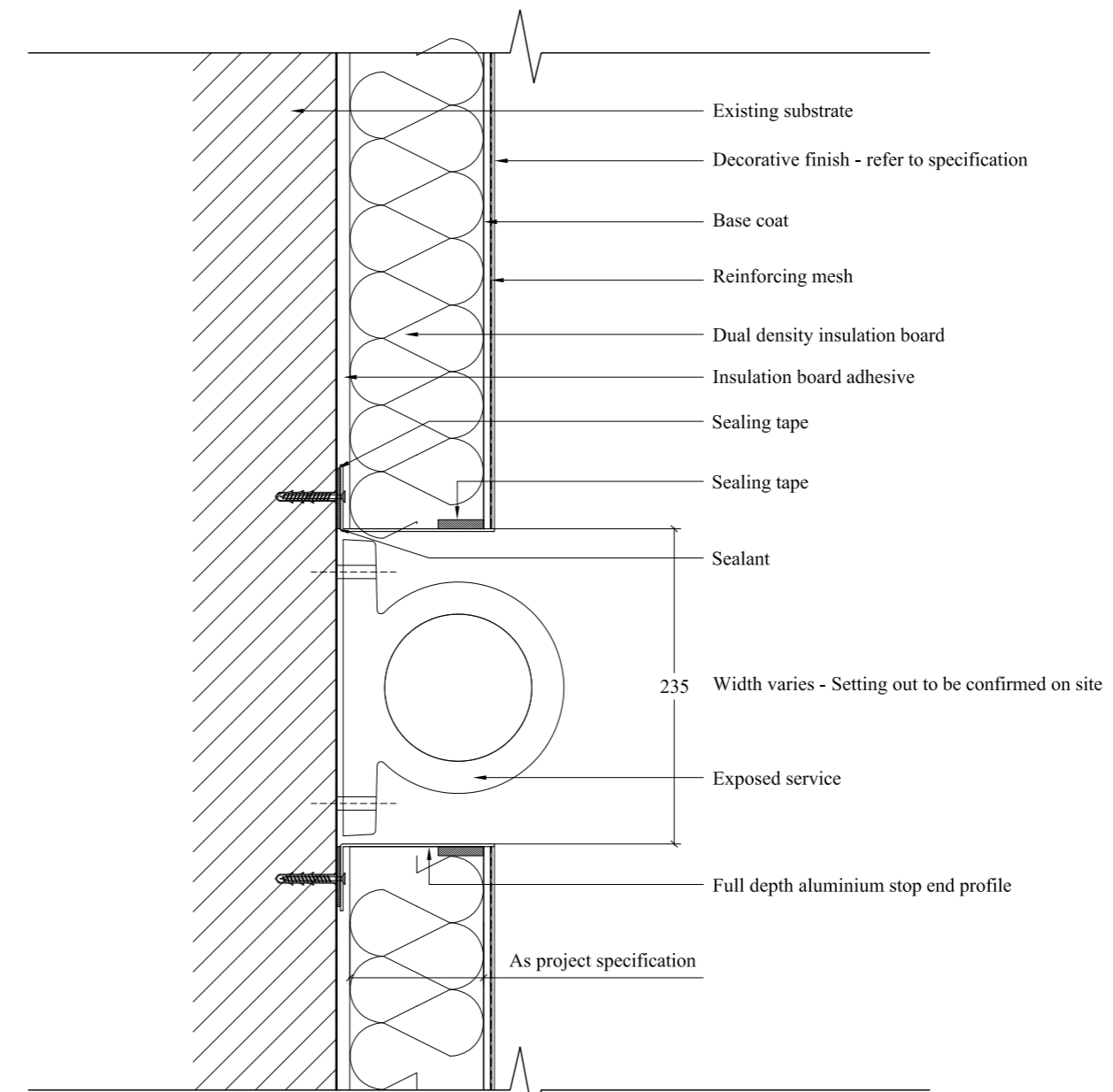


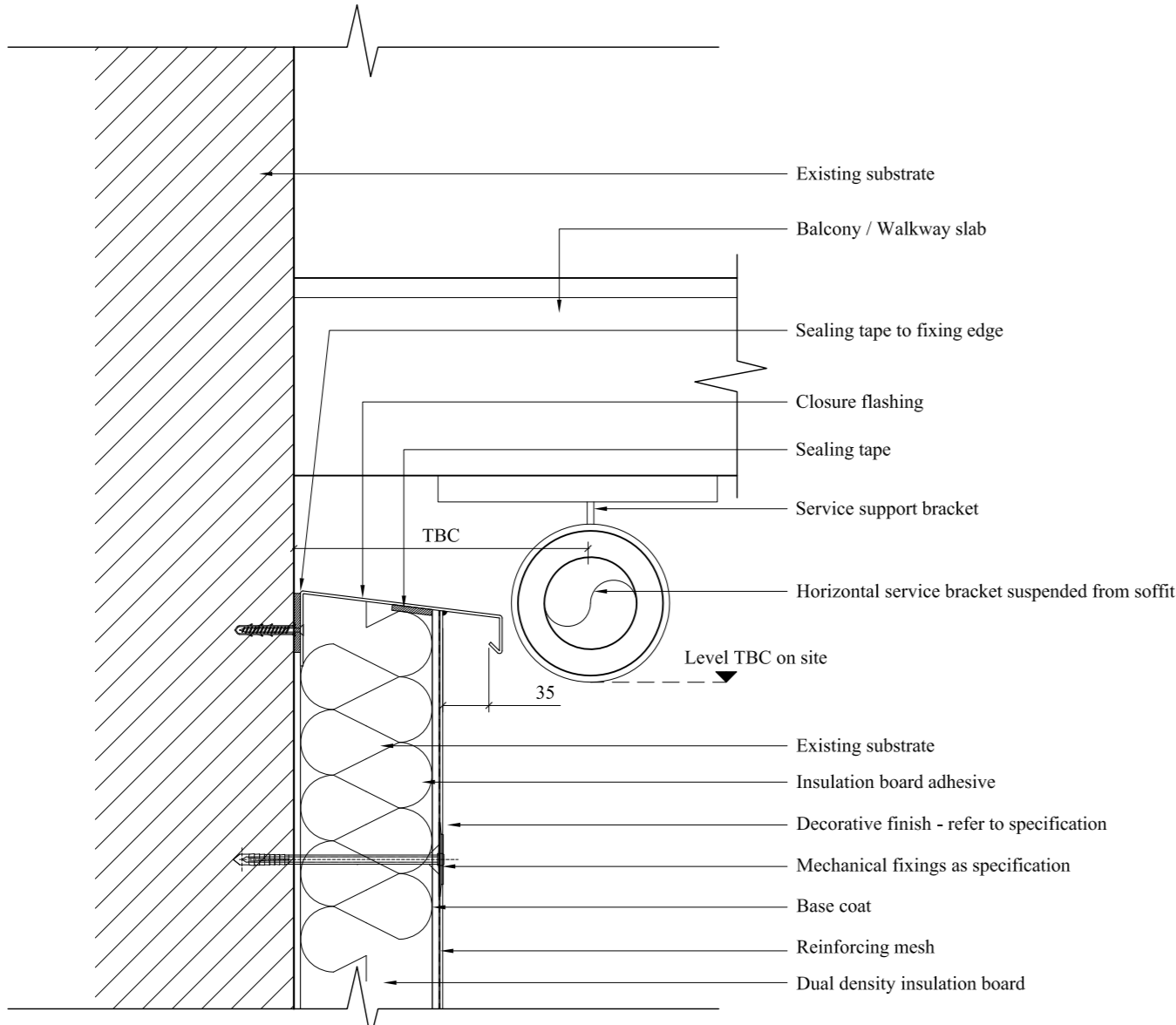
TYPICAL VERTICAL SERVICE ENCASEMENT (ALL GAS ENCASEMENTS REQUIRE LOUVRED PANELS)

SERVICE ENCASEMENT DIMENSIONS TO BE CONFIRMED ON SITE. ENCASEMENT WIDTH VARIES ACCORDING TO TYPE OF SERVICE. POLYESTER POWDER COATING COLOUR TO BE CONFIRMED

VERTICAL SERVICE ENCASEMENT DETAIL

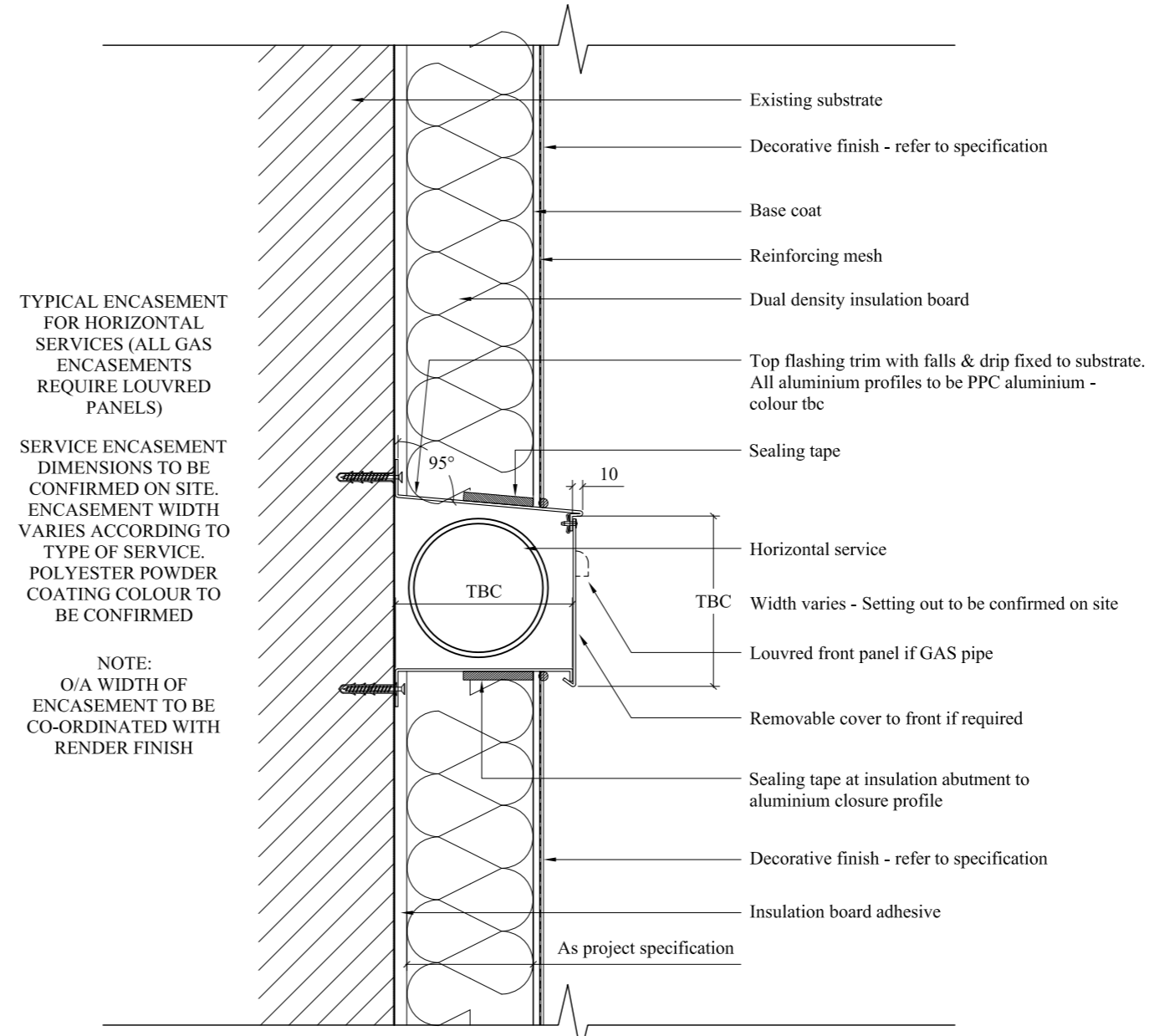


SECTION THROUGH EXPOSED SERVICE PIPE



SETTING OUT OF CLOSURE TRIM TO BE CONFIRMED ON SITE DUE TO ACCESS RESTRICTIONS IMPOSED BY THE SUSPENDED SERVICE PIPE & BRACKETS

SECTION THROUGH WALKWAY WITH SUSPENDED SERVICES



TYPICAL ENCASEMENT FOR HORIZONTAL SERVICES (ALL GAS ENCASEMENTS REQUIRE LOUVRED PANELS)

SERVICE ENCASEMENT DIMENSIONS TO BE CONFIRMED ON SITE. ENCASEMENT WIDTH VARIES ACCORDING TO TYPE OF SERVICE. POLYESTER POWDER COATING COLOUR TO BE CONFIRMED

NOTE: O/A WIDTH OF ENCASEMENT TO BE CO-ORDINATED WITH RENDER FINISH

SECTION THROUGH HORIZONTAL SERVICE ENCASMENT

NOTES:
DETAIL IS TO BE READ IN CONJUNCTION WITH RELEVANT PROJECT SPECIFICATION.

MECHANICAL FIXINGS TO BE CONFIRMED BY PULL OUT TESTS.

NEIGHBOURING WORKS ARE REPRESENTED ONLY SCHEMATICALLY. THIS DETAIL IS A PROPOSAL WHICH DESCRIBES THE BASIC FUNCTION OF AN EWI SYSTEM.

THIS DESIGN DETAIL HAS BEEN PRODUCED BY ROCKWOOL BASED ON INFORMATION SUPPLIED AND/OR BY SITE VISIT.

THIS DESIGN HAS BEEN PRODUCED TO SHOW THE INSTALLATION OF THE ROCKWOOL SYSTEM AND SHOULD BE USED AS REFERENCE ONLY BY THE PROJECT DESIGN TEAM IN THE PRODUCTION OF CONSTRUCTION DRAWINGS.

ROCKWOOL WILL NOT ACCEPT ANY LIABILITY FOR THIS DETAIL UNLESS IT ALREADY FALLS WITHIN THE TERMS OF ANY EXISTING WARRANTY BETWEEN YOURSELVES AND ROCKWOOL FOR THIS PROJECT.

NOTES:
ALUMINIUM SERVICE ENCLOSURES NOT SUPPLIED BY ROCKWOOL
ALL DIMENSIONS RELATING TO SERVICE ENCLOSURES ARE TO BE CONFIRMED ON SITE

Rev	Date	Notes

ROCKWOOL

ROCKWOOL LIMITED
Pencoed, Bridgend,
South Wales CF35 6NY
t: 0871 222 0011
f: 0871 222 1781

Job Title
LAKEHOUSE - CAMDEN - (1-48 GREENWOOD)

Drawing Title
Service enclosures

Scale 1:5 Date 10.14

Sheet Size A1 Drawn By LH

Drawing Number RW057 (99) 103 Rev. -