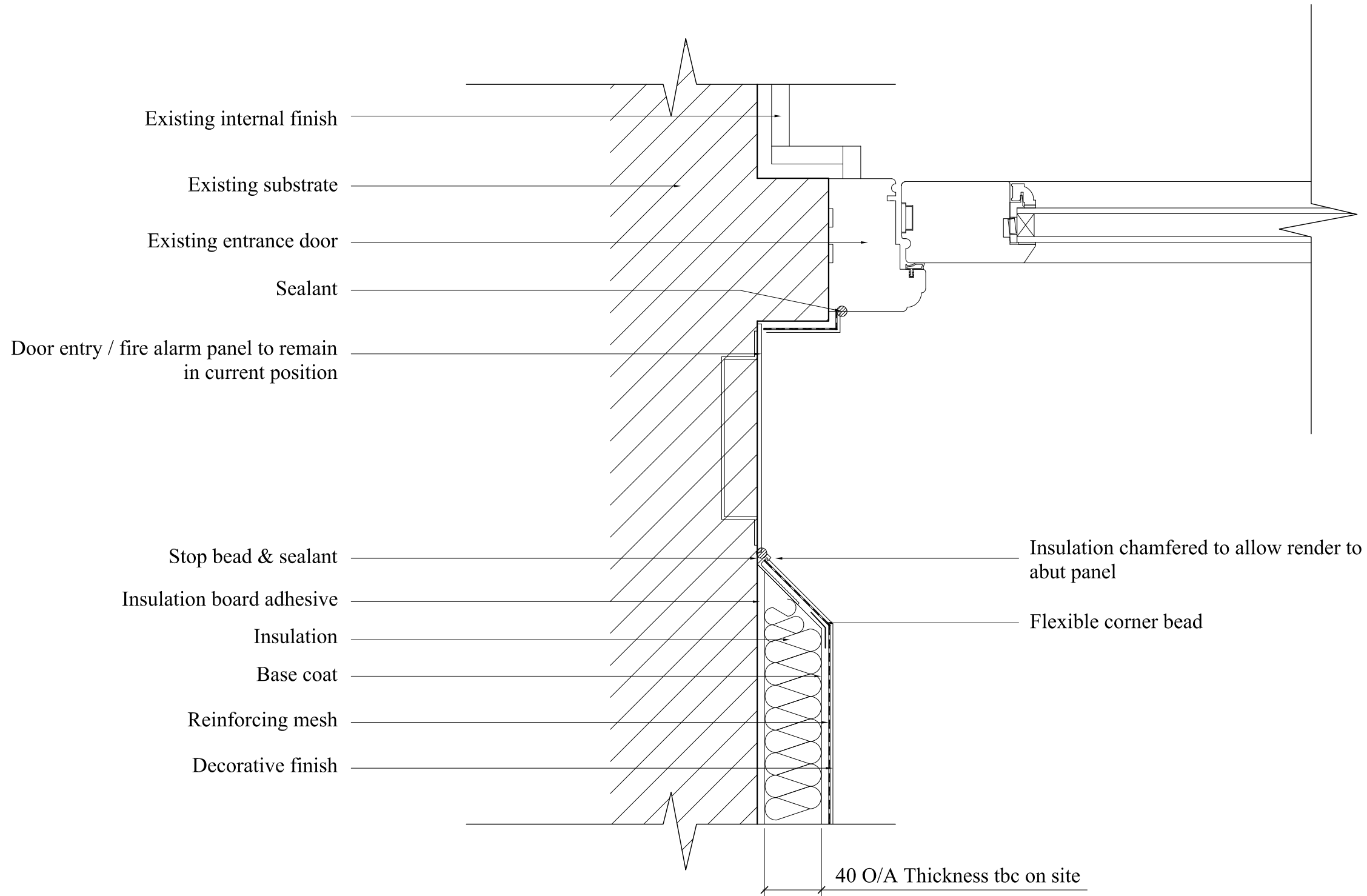


**NOTES:**  
 DETAIL IS TO BE READ IN CONJUNCTION WITH RELEVANT PROJECT SPECIFICATION.  
 MECHANICAL FIXINGS TO BE CONFIRMED BY PULL OUT TESTS.  
 NEIGHBOURING WORKS ARE REPRESENTED ONLY SCHEMATICALLY. THIS DETAIL IS A PROPOSAL WHICH DESCRIBES THE BASIC FUNCTION OF AN EWI SYSTEM.  
 THIS DESIGN DETAIL HAS BEEN PRODUCED BY ROCKWOOL BASED ON INFORMATION SUPPLIED AND/OR BY SITE VISIT.  
 THIS DESIGN HAS BEEN PRODUCED TO SHOW THE INSTALLATION OF THE ROCKWOOL SYSTEM AND SHOULD BE USED AS REFERENCE ONLY BY THE PROJECT DESIGN TEAM IN THE PRODUCTION OF CONSTRUCTION DRAWINGS.  
 ROCKWOOL WILL NOT ACCEPT ANY LIABILITY FOR THIS DETAIL UNLESS IT ALREADY FALLS WITHIN THE TERMS OF ANY EXISTING WARRANTY BETWEEN YOURSELVES AND ROCKWOOL FOR THIS PROJECT.



Rev	Date	Notes

**ROCKWOOL®**

ROCKWOOL LIMITED  
 Pencoed, Bridgend,  
 South Wales CF35 6NY  
 t: 0871 222 0011  
 f: 0871 222 1781

Job Title  
 LAKEHOUSE - CAMDEN - (1-48 GREENWOOD)

Drawing Title  
 REDArt to door access panel  
 Option 2

Scale      NTS                      Date      10.14

Sheet Size      A3                      Drawn By      LH

Rockwool Technical Support: 0871 222 0011

Drawing Number      RW057 (99) 102B                      Rev.      -