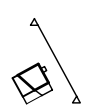
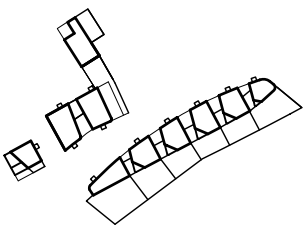
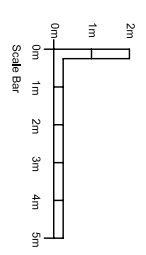
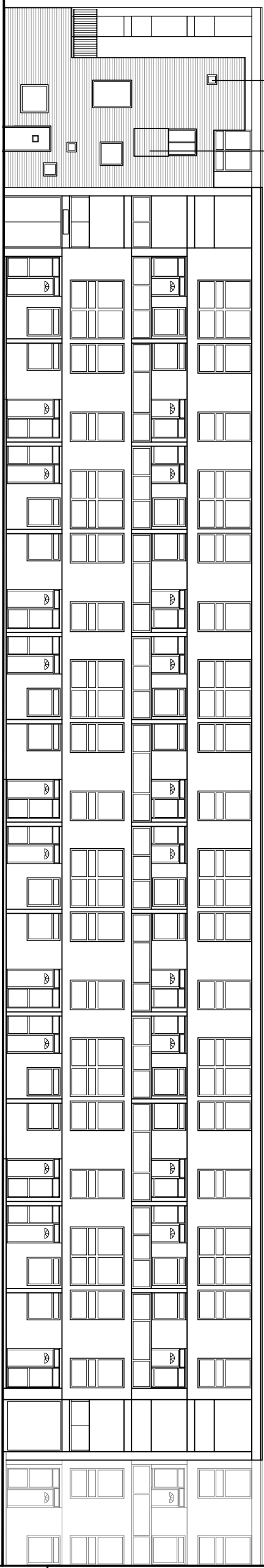


COMPOSITE TIMBER / BRICK BALCONIES TO
ALUMINIUM WINDOWS MATCH BRICK FACADE



REVISIONS:

PETER BARBER
ARCHITECTS
173 Kings Cross Road LONDON WC1X 8SZ
enquiries@peterbarberarchitects.com

on: Kilm Place, Gospel Oak

on: London Borough of Camden / E.C.Herts

scale: 1/200 @ A3
sheet: AB

PROJECT: EXISTING & PROPOSED
ELEVATION 11

Sheet No: 116_E_11

Rev: A