

APPENDIX A

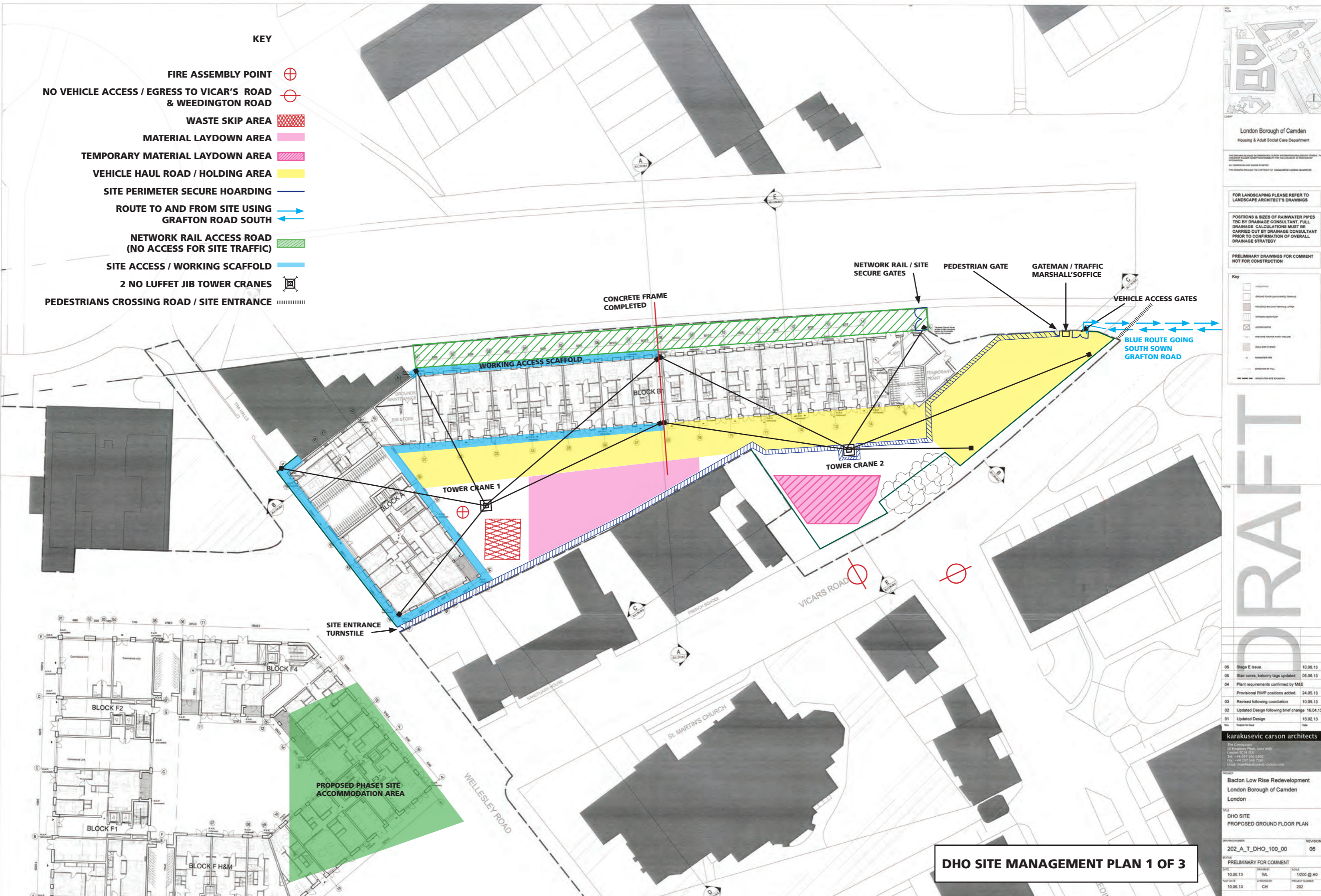
Gant Chart Programme



APPENDIX B

Site Management Plans

- KEY**
- FIRE ASSEMBLY POINT
 - NO VEHICLE ACCESS / EGRESS TO VICAR'S ROAD & WEEDINGTON ROAD
 - WASTE SKIP AREA
 - MATERIAL LAYDOWN AREA
 - TEMPORARY MATERIAL LAYDOWN AREA
 - VEHICLE HAUL ROAD / HOLDING AREA
 - SITE PERIMETER SECURE HOARDING
 - ROUTE TO AND FROM SITE USING GRAFTON ROAD SOUTH
 - NETWORK RAIL ACCESS ROAD (NO ACCESS FOR SITE TRAFFIC)
 - SITE ACCESS / WORKING SCAFFOLD
 - 2 NO LUFFET JIB TOWER CRANES
 - PEDESTRIANS CROSSING ROAD / SITE ENTRANCE



London Borough of Camden
Housing & Adult Social Care Department

FOR LANDSCAPING PLEASE REFER TO LANDSCAPE ARCHITECT'S DRAWINGS

POSITIONS & SIZES OF RAINWATER PIPES TBC BY DRAINAGE CONSULTANT. FULL DRAINAGE CALCULATIONS MUST BE CARRIED OUT BY DRAINAGE CONSULTANT PRIOR TO CONFIRMATION OF OVERALL DRAINAGE STRATEGY

PRELIMINARY DRAWINGS FOR COMMENT NOT FOR CONSTRUCTION

Key

- GREEN HATCHED AREA
- PINK HATCHED AREA
- YELLOW HATCHED AREA
- RED HATCHED AREA
- BLUE HATCHED AREA
- BLUE DASHED LINE
- BLUE DOUBLE-HEADED ARROW
- BLUE SOLID LINE
- BLUE DASHED LINE WITH CROSSBAR
- BLUE DASHED LINE WITH CROSSBAR
- BLUE DASHED LINE WITH CROSSBAR
- BLUE DASHED LINE WITH CROSSBAR

DRAFT

06	Stage E issue	10.06.13
05	Star cores, balcony tags updated	06.06.13
04	Plant requirements confirmed by MSE	
03	Provisional RWP positions added	24.05.13
02	Revised following coordination	10.05.13
01	Updated Design following brief change	16.04.13
00	Updated Design	18.02.13

karakusevic carson architects

The Corporation
25 Riverside Plaza, Suite 1000
London EC1A 1BB
Tel: +44 207 554 5300
Fax: +44 207 554 7341
Email: info@karakusevic-carson.com

Bacton Low Rise Redevelopment
London Borough of Camden
London

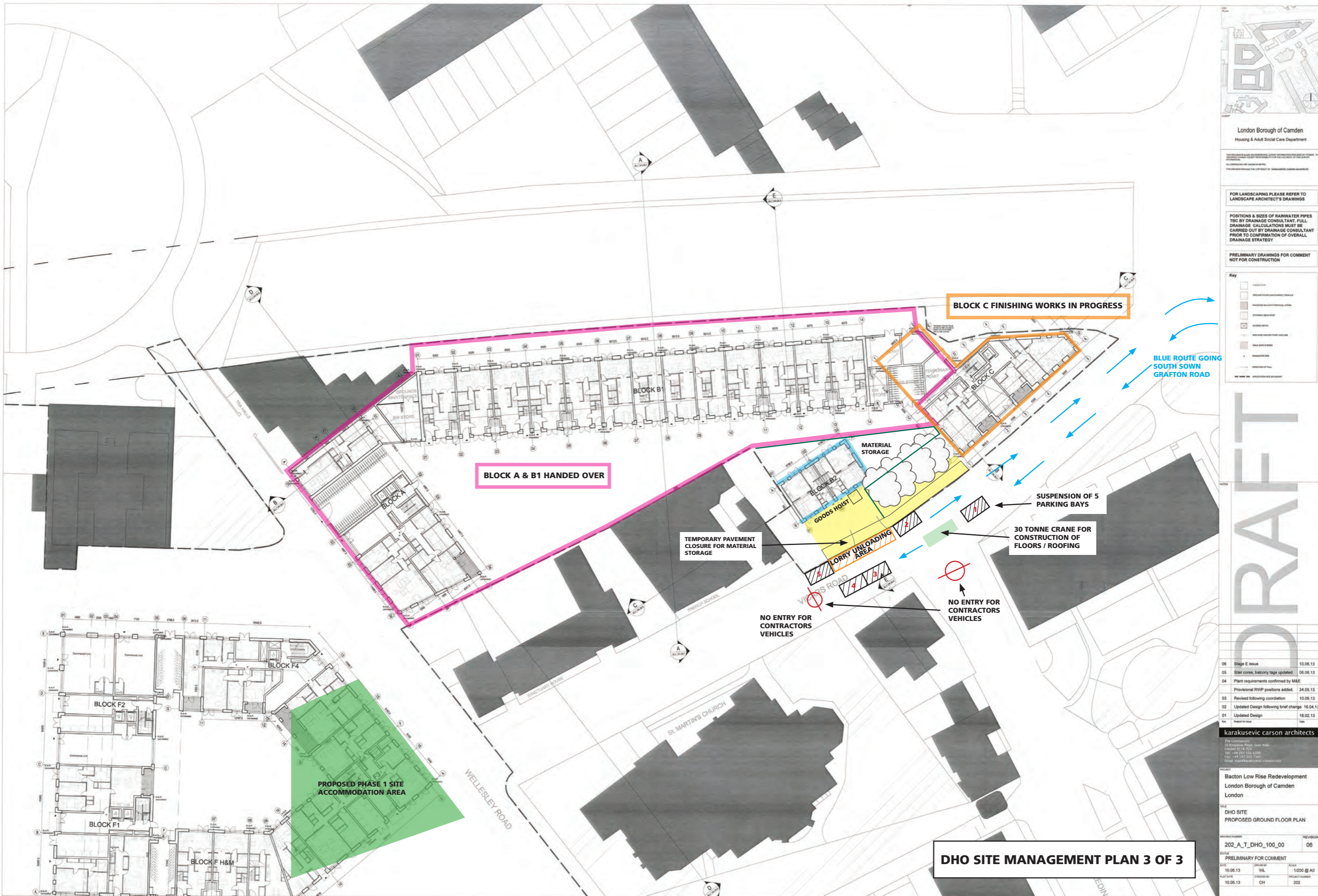
DHO SITE
PROPOSED GROUND FLOOR PLAN

202_A_T_DHO_100_00

PRELIMINARY FOR COMMENT

DATE: 10.06.13 DRAWN BY: VL SCALE: 1/200 @ A0
 DATE: 10.06.13 CHECKED BY: CH PROJECT NUMBER: 202

DHO SITE MANAGEMENT PLAN 1 OF 3



London Borough of Camden
Housing & Adult Social Care Department

FOR LANDSCAPING PLEASE REFER TO LANDSCAPE ARCHITECT'S DRAWINGS

POSITIONS & SIZES OF RAINWATER PIPES TO BE BY DRAINAGE CONSULTANT. FULL DRAINAGE CALCULATIONS MUST BE CARRIED OUT BY DRAINAGE CONSULTANT PRIOR TO CONFIRMATION OF OVERALL DRAINAGE STRATEGY

PRELIMINARY DRAWINGS FOR COMMENT NOT FOR CONSTRUCTION

Key

- EXISTING BUILDING
- PROPOSED BUILDING
- PROPOSED ACCESS ROUTE
- PROPOSED PARKING BAY
- PROPOSED MATERIAL STORAGE AREA
- PROPOSED LORRY UNLOADING AREA
- PROPOSED GOODS HOIST
- PROPOSED CRANE LOCATION
- PROPOSED PAVEMENT CLOSURE
- PROPOSED SUSPENSION OF PARKING BAYS
- PROPOSED NO ENTRY FOR CONTRACTORS VEHICLES
- PROPOSED BLUE ROUTE

DRAFT

REV	DESCRIPTION	DATE
06	Stage E issue	10.06.13
05	Star cores, balcony tags updated	06.06.13
04	Plant requirements confirmed by MSE	
	Provisional RWP positions added	24.05.13
03	Revised following coordination	10.05.13
02	Updated Design following brief change	16.04.13
01	Updated Design	18.02.13

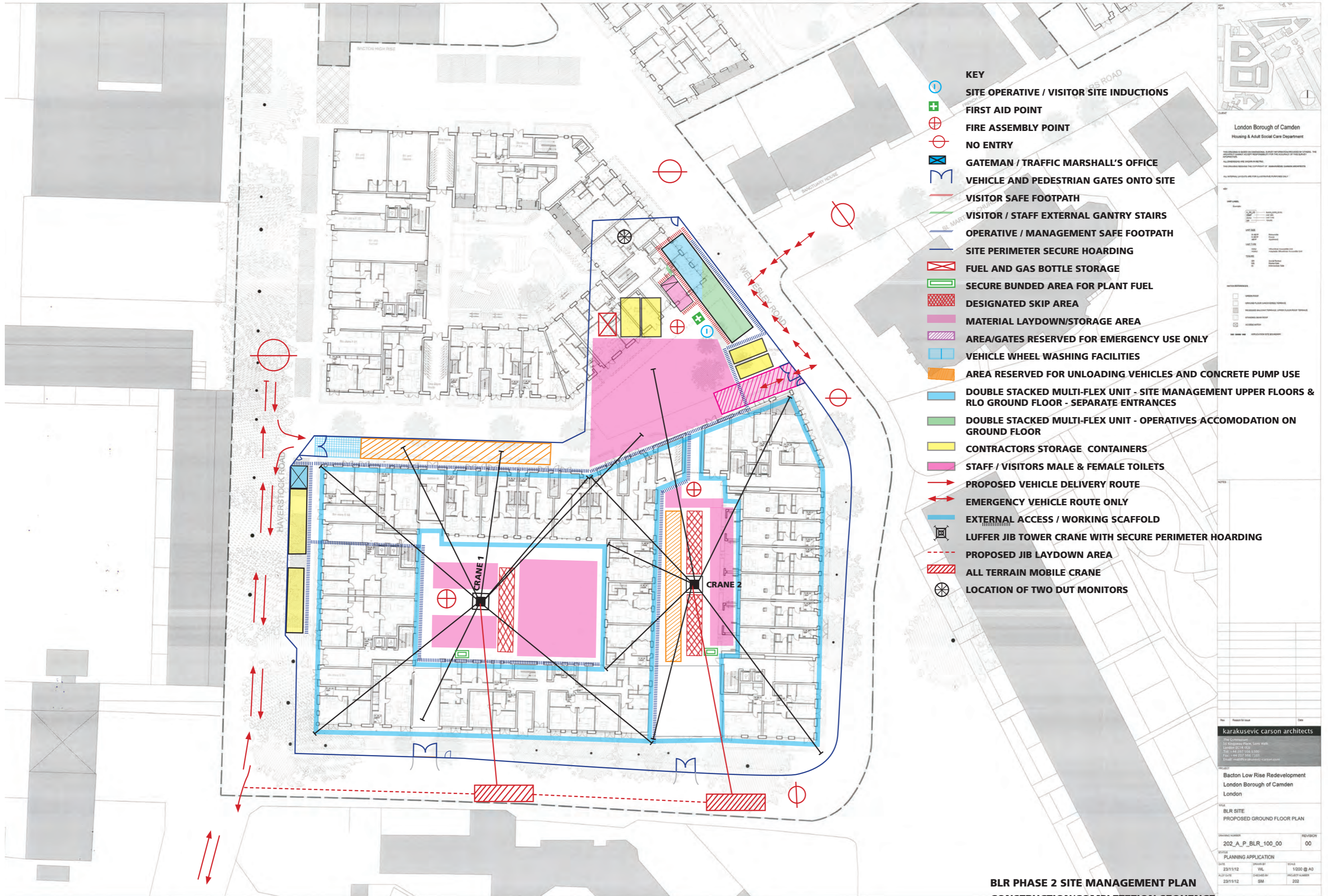
karakusevic carson architects
The Corporation
24 Riverside Plaza, Suite 500
London EC1A 1BB
Tel: +44 207 554 5300
Fax: +44 207 554 7341
Email: info@karakusevic-carson.com

Bacton Low Rise Redevelopment
London Borough of Camden
London

DHO SITE
PROPOSED GROUND FLOOR PLAN

DATE	BY	CHECKED BY	SCALE
10.05.13	VA	CH	1/200 @ A0
10.05.13	CH		

DHO SITE MANAGEMENT PLAN 3 OF 3



- KEY**
- ⓘ SITE OPERATIVE / VISITOR SITE INDUCTIONS
 - ⊕ FIRST AID POINT
 - ⊕ FIRE ASSEMBLY POINT
 - ⊕ NO ENTRY
 - ⊕ GATEMAN / TRAFFIC MARSHAL'S OFFICE
 - M VEHICLE AND PEDESTRIAN GATES ONTO SITE
 - VISITOR SAFE FOOTPATH
 - VISITOR / STAFF EXTERNAL GANTRY STAIRS
 - OPERATIVE / MANAGEMENT SAFE FOOTPATH
 - SITE PERIMETER SECURE HOARDING
 - ⊕ FUEL AND GAS BOTTLE STORAGE
 - ⊕ SECURE BUNDED AREA FOR PLANT FUEL
 - ⊕ DESIGNATED SKIP AREA
 - ⊕ MATERIAL LAYDOWN/STORAGE AREA
 - ⊕ AREA/GATES RESERVED FOR EMERGENCY USE ONLY
 - ⊕ VEHICLE WHEEL WASHING FACILITIES
 - ⊕ AREA RESERVED FOR UNLOADING VEHICLES AND CONCRETE PUMP USE
 - ⊕ DOUBLE STACKED MULTI-FLEX UNIT - SITE MANAGEMENT UPPER FLOORS & RLO GROUND FLOOR - SEPARATE ENTRANCES
 - ⊕ DOUBLE STACKED MULTI-FLEX UNIT - OPERATIVES ACCOMODATION ON GROUND FLOOR
 - ⊕ CONTRACTORS STORAGE CONTAINERS
 - ⊕ STAFF / VISITORS MALE & FEMALE TOILETS
 - PROPOSED VEHICLE DELIVERY ROUTE
 - ↔ EMERGENCY VEHICLE ROUTE ONLY
 - EXTERNAL ACCESS / WORKING SCAFFOLD
 - ⊕ LUFFER JIB TOWER CRANE WITH SECURE PERIMETER HOARDING
 - ⊕ PROPOSED JIB LAYDOWN AREA
 - ⊕ ALL TERRAIN MOBILE CRANE
 - ⊕ LOCATION OF TWO DUT MONITORS

London Borough of Camden
Housing & Adult Social Care Department

karakusevic carson architects
The Corporation
25 Abchurch Lane, 5th Floor
London EC4A 3DF
Tel: +44 (0)20 7596 5300
Fax: +44 (0)20 7596 7381
Email: info@karakusevic-carson.com

Bacton Low Rise Redevelopment
London Borough of Camden
London

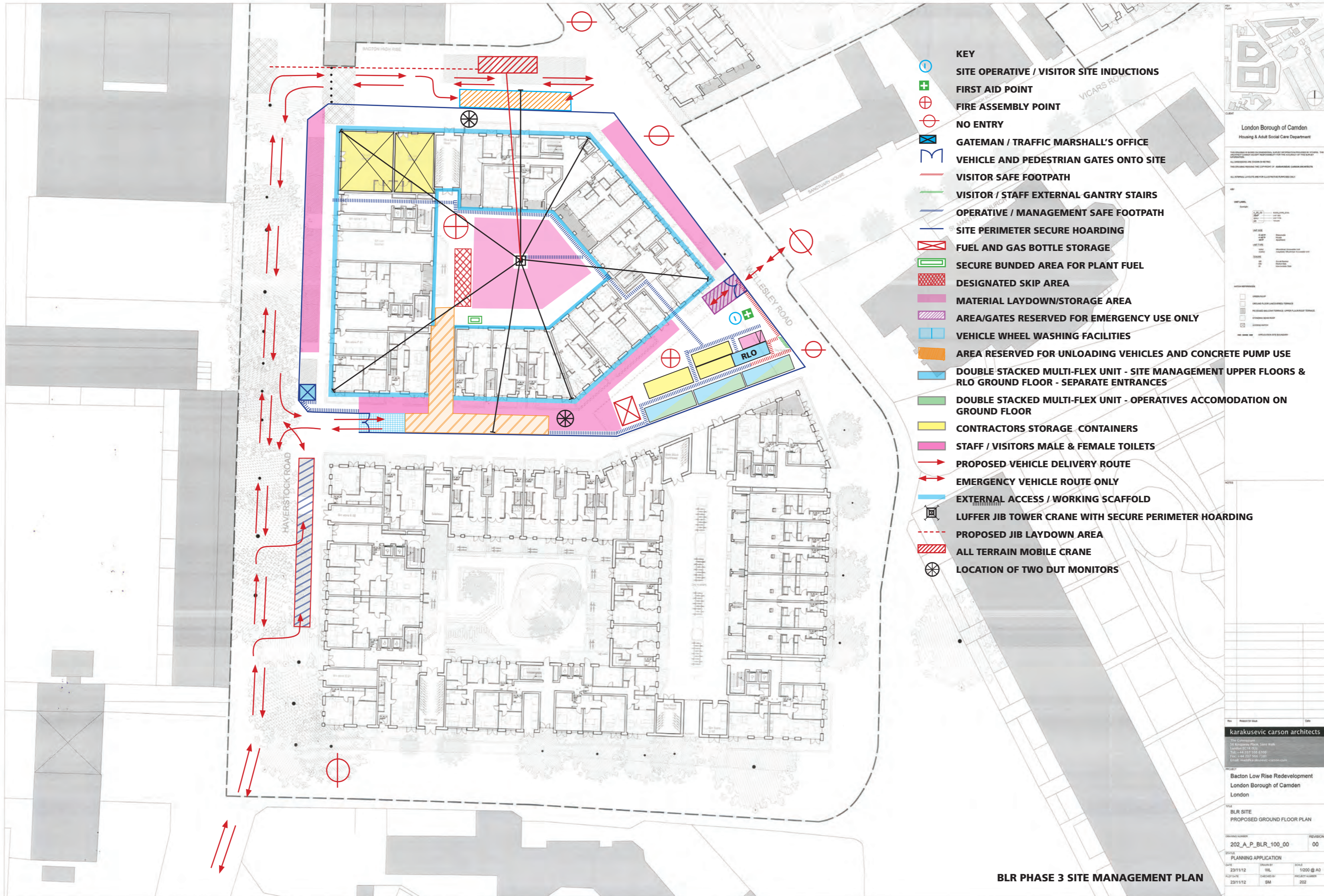
BLR SITE PROPOSED GROUND FLOOR PLAN

REVISION NUMBER	REVISION
202_A_P_BLR_100_00	00

PLANNING APPLICATION

DATE	DESIGNED BY	SCALE
23/11/12	WL	1/200 @ A0
23/11/12	SM	202

**BLR PHASE 2 SITE MANAGEMENT PLAN
CONSTRUCTION/COMPLETION SEQUENCE**



- KEY**
- ⊖ SITE OPERATIVE / VISITOR SITE INDUCTIONS
 - + FIRST AID POINT
 - ⊕ FIRE ASSEMBLY POINT
 - ⊘ NO ENTRY
 - ⊠ GATEMAN / TRAFFIC MARSHALL'S OFFICE
 - M VEHICLE AND PEDESTRIAN GATES ONTO SITE
 - VISITOR SAFE FOOTPATH
 - VISITOR / STAFF EXTERNAL GANTRY STAIRS
 - OPERATIVE / MANAGEMENT SAFE FOOTPATH
 - SITE PERIMETER SECURE HOARDING
 - ⊠ FUEL AND GAS BOTTLE STORAGE
 - ⊠ SECURE BUNDED AREA FOR PLANT FUEL
 - ⊠ DESIGNATED SKIP AREA
 - ⊠ MATERIAL LAYDOWN/STORAGE AREA
 - ⊠ AREA/GATES RESERVED FOR EMERGENCY USE ONLY
 - ⊠ VEHICLE WHEEL WASHING FACILITIES
 - ⊠ AREA RESERVED FOR UNLOADING VEHICLES AND CONCRETE PUMP USE
 - ⊠ DOUBLE STACKED MULTI-FLEX UNIT - SITE MANAGEMENT UPPER FLOORS & RLO GROUND FLOOR - SEPARATE ENTRANCES
 - ⊠ DOUBLE STACKED MULTI-FLEX UNIT - OPERATIVES ACCOMODATION ON GROUND FLOOR
 - ⊠ CONTRACTORS STORAGE CONTAINERS
 - ⊠ STAFF / VISITORS MALE & FEMALE TOILETS
 - PROPOSED VEHICLE DELIVERY ROUTE
 - ↔ EMERGENCY VEHICLE ROUTE ONLY
 - EXTERNAL ACCESS / WORKING SCAFFOLD
 - ⊠ LUFFER JIB TOWER CRANE WITH SECURE PERIMETER HOARDING
 - ⊠ PROPOSED JIB LAYDOWN AREA
 - ⊠ ALL TERRAIN MOBILE CRANE
 - ⊠ LOCATION OF TWO DUT MONITORS

London Borough of Camden
Housing & Adult Social Care Department

karakusevic carson architects
The Corporation
24 Brompton Place, 5th Floor
London W1A 2JL
Tel: +44 207 556 6300
Fax: +44 207 556 7381
Email: info@karakusevic-carson.com

Bacton Low Rise Redevelopment
London Borough of Camden
London

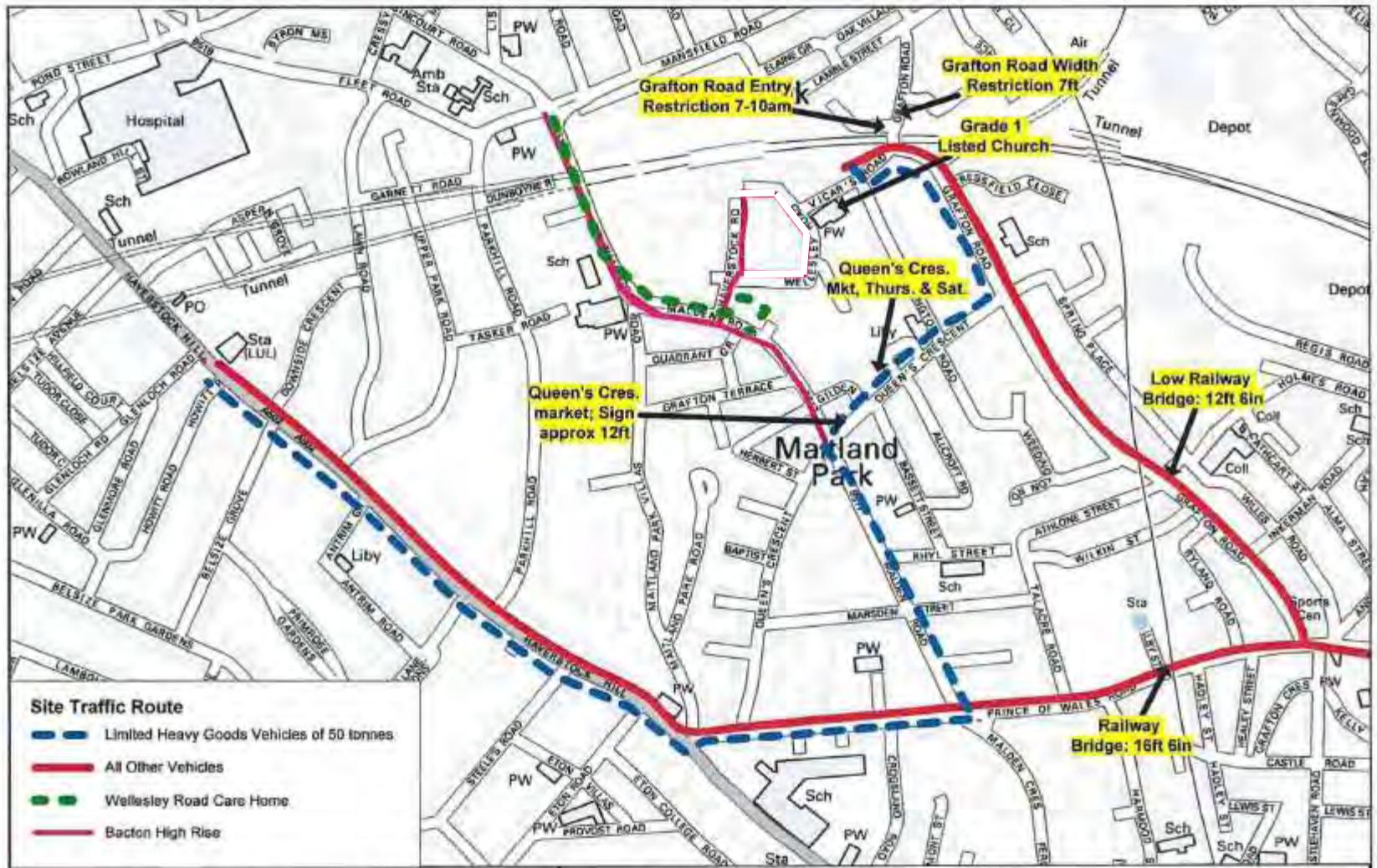
BLR SITE PROPOSED GROUND FLOOR PLAN

PROJECT NUMBER	202_A_P_BLR_100_00	REVISION	00
DATE	23/11/12	SCALE	1:200 @ A0
BY	SM	PROJECT NUMBER	202

BLR PHASE 3 SITE MANAGEMENT PLAN

APPENDIX C

Construction Vehicle Route Maps



Traffic Routes at Gospel Oak

Reproduced by permission of Ordnance Survey on behalf of HMSO.
 © Crown copyright and database right 2012.
 Ordnance Survey Licence number 100019726.



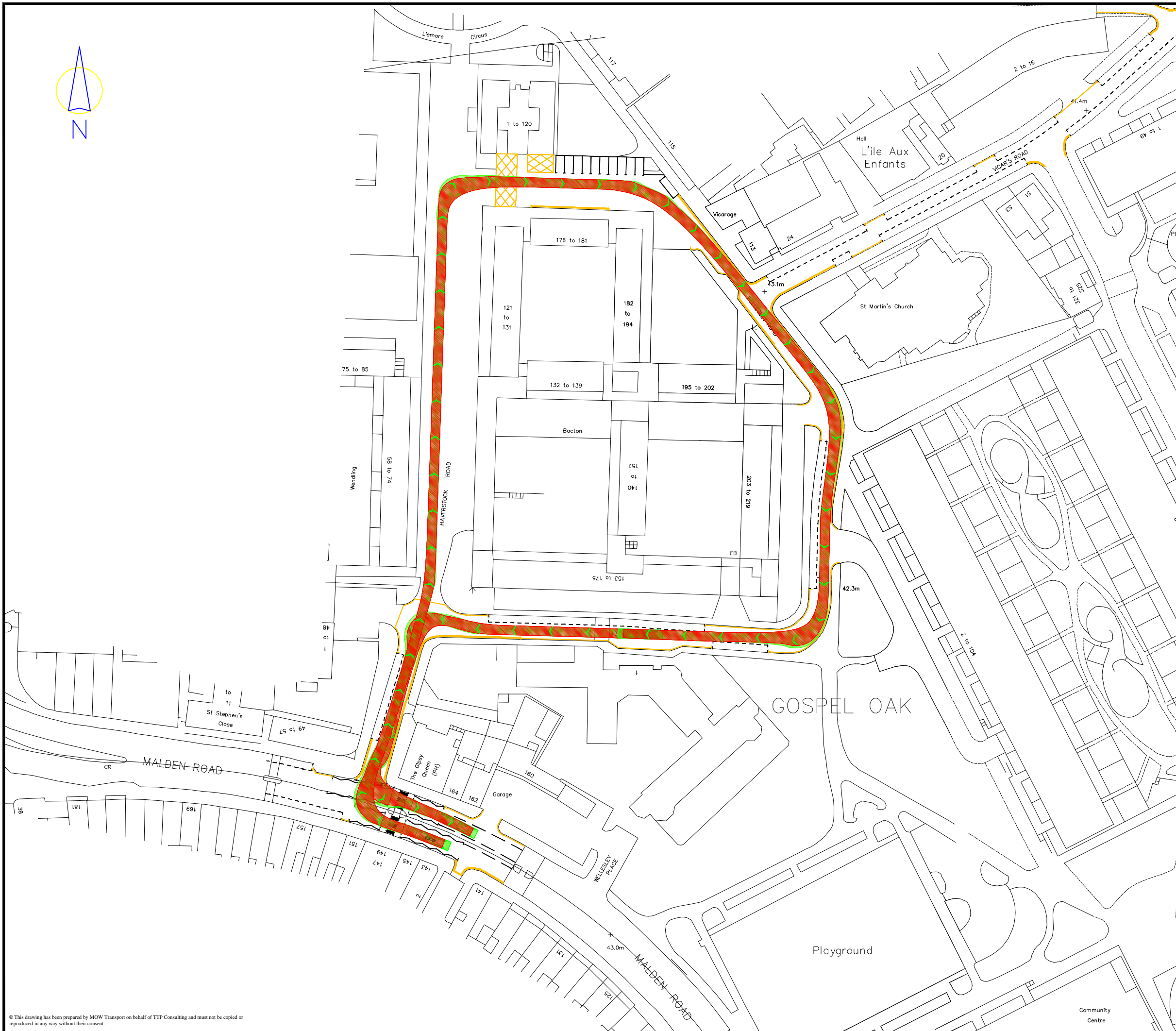
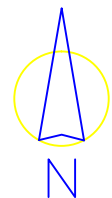
Scale 1: 1000

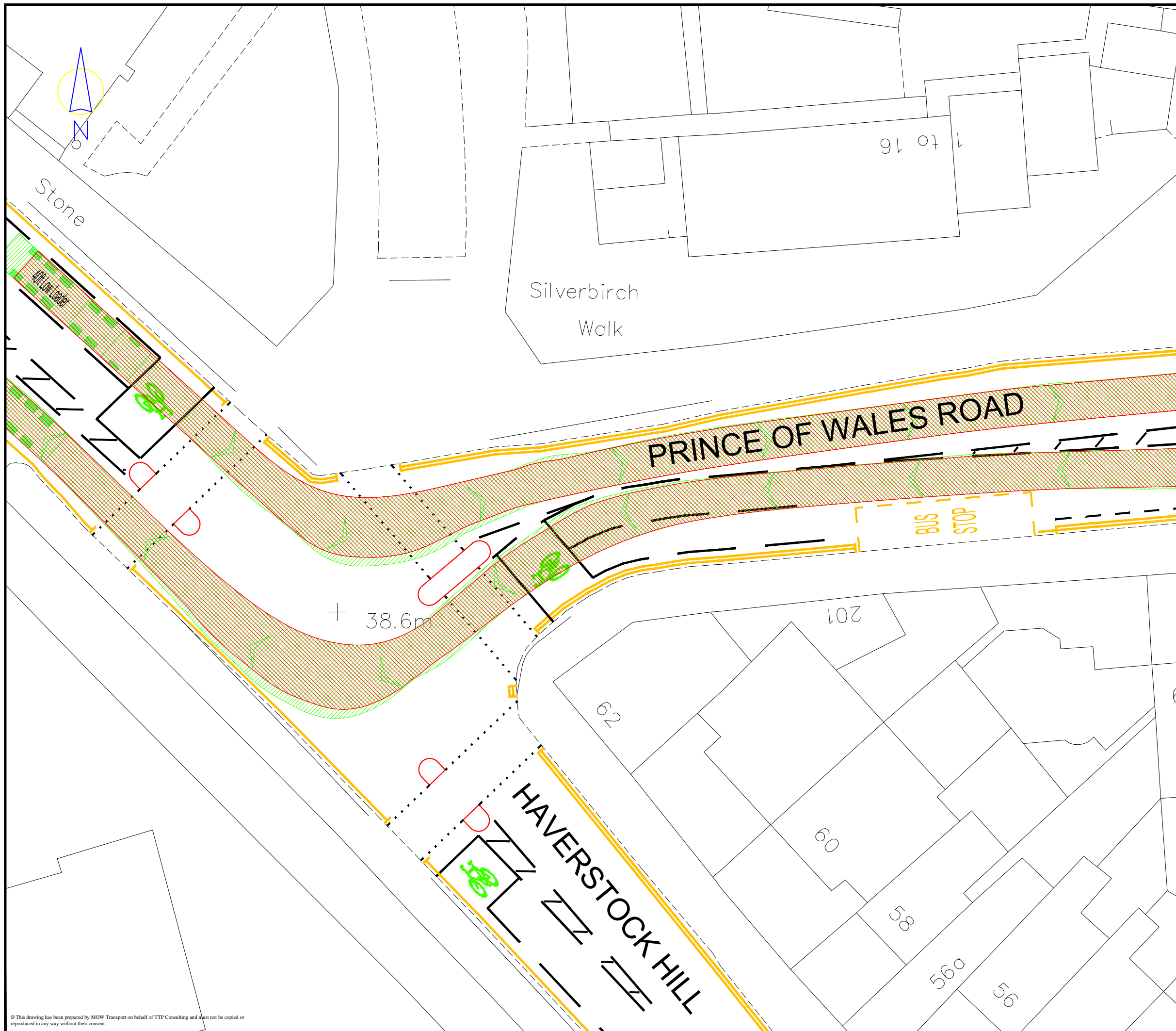
Print Date: 16/09/2013

Printed By: mdickson Map Ref No: 01

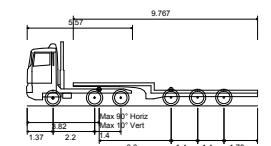
APPENDIX D

Swept Paths





Rev	Details	Drawn	Checked	Date



40ft Low Loader
 Overall Length 12.200m
 Overall Width 2.500m
 Overall Body Height 3.396m
 Min Body Ground Clearance 0.320m
 Max Track Width 2.500m
 Lock to Lock Time 6.00s
 Kerb to Kerb Turning Radius 6.790m

Notes:
 1. This is not a construction drawing and is intended for illustrative purposes only.

Client
 Rydon Construction

Project
 Bacton Low Rise

Drawing Title
 Swept Path Analysis Using a 40ft Low Loader

Scale 1:250

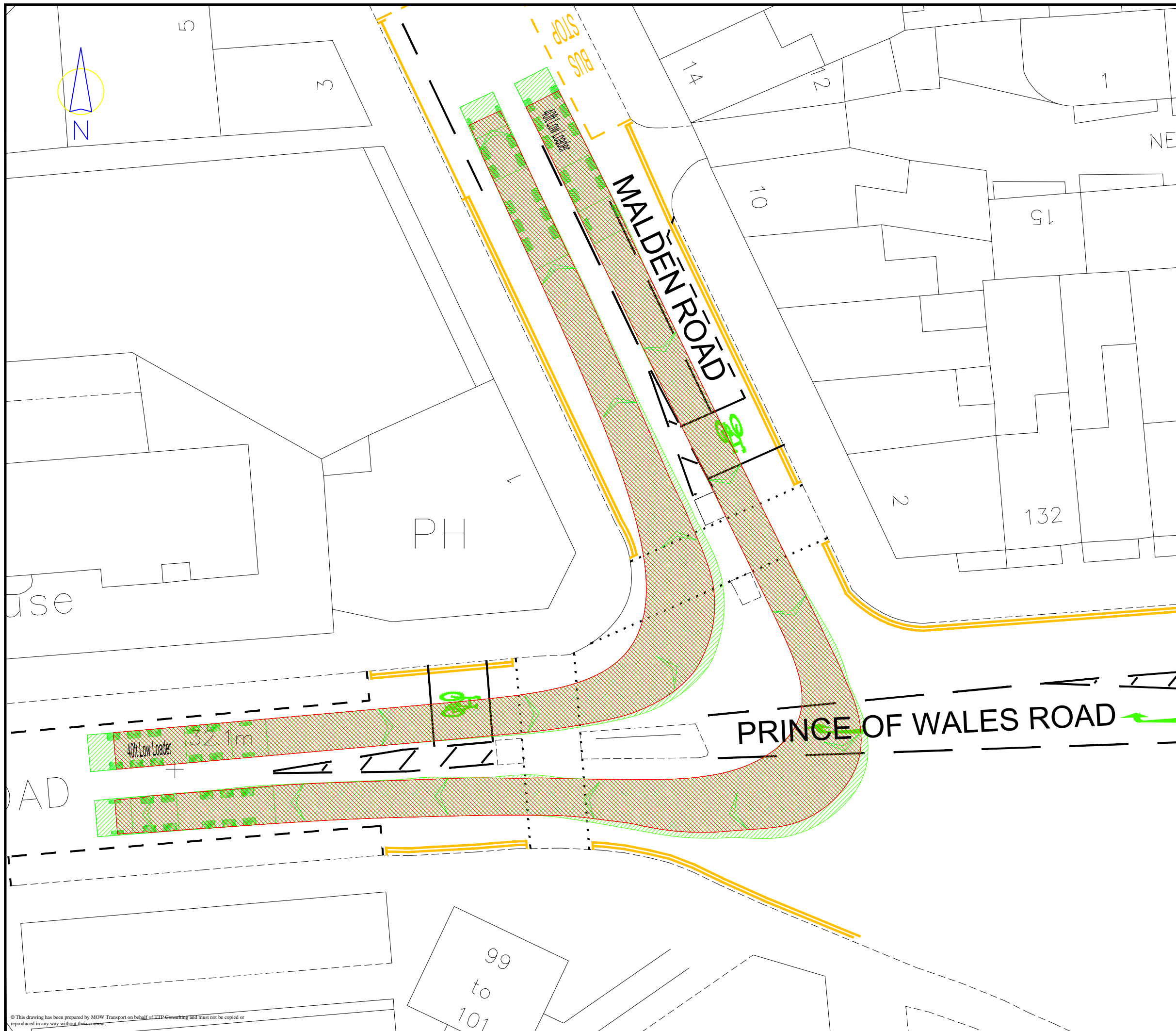
Drawn	MW	02.10.13
Checked	NB	02.10.13



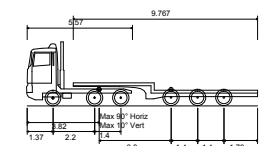
131-151 Great Titchfield Street
 London
 W1W 5BB
 Tel. No. 020 3008 8940

Drawing Number
 ____-BLR-AT-201

© This drawing has been prepared by MOW Transport on behalf of TTP Consulting and must not be copied or reproduced in any way without their consent.



Rev	Details	Drawn	Checked	Date



40ft Low Loader

Overall Length	12.200m
Overall Width	2.500m
Overall Body Height	3.396m
Min Body Ground Clearance	0.320m
Max Track Width	2.500m
Lock to Lock Time	6.00s
Kerb to Kerb Turning Radius	6.790m

Notes:
 1. This is not a construction drawing and is intended for illustrative purposes only.

Client
 Rydon Construction

Project
 Bacton Low Rise

Drawing Title
 Swept Path Analysis Using a 40ft Low Loader

Scale
 1:250

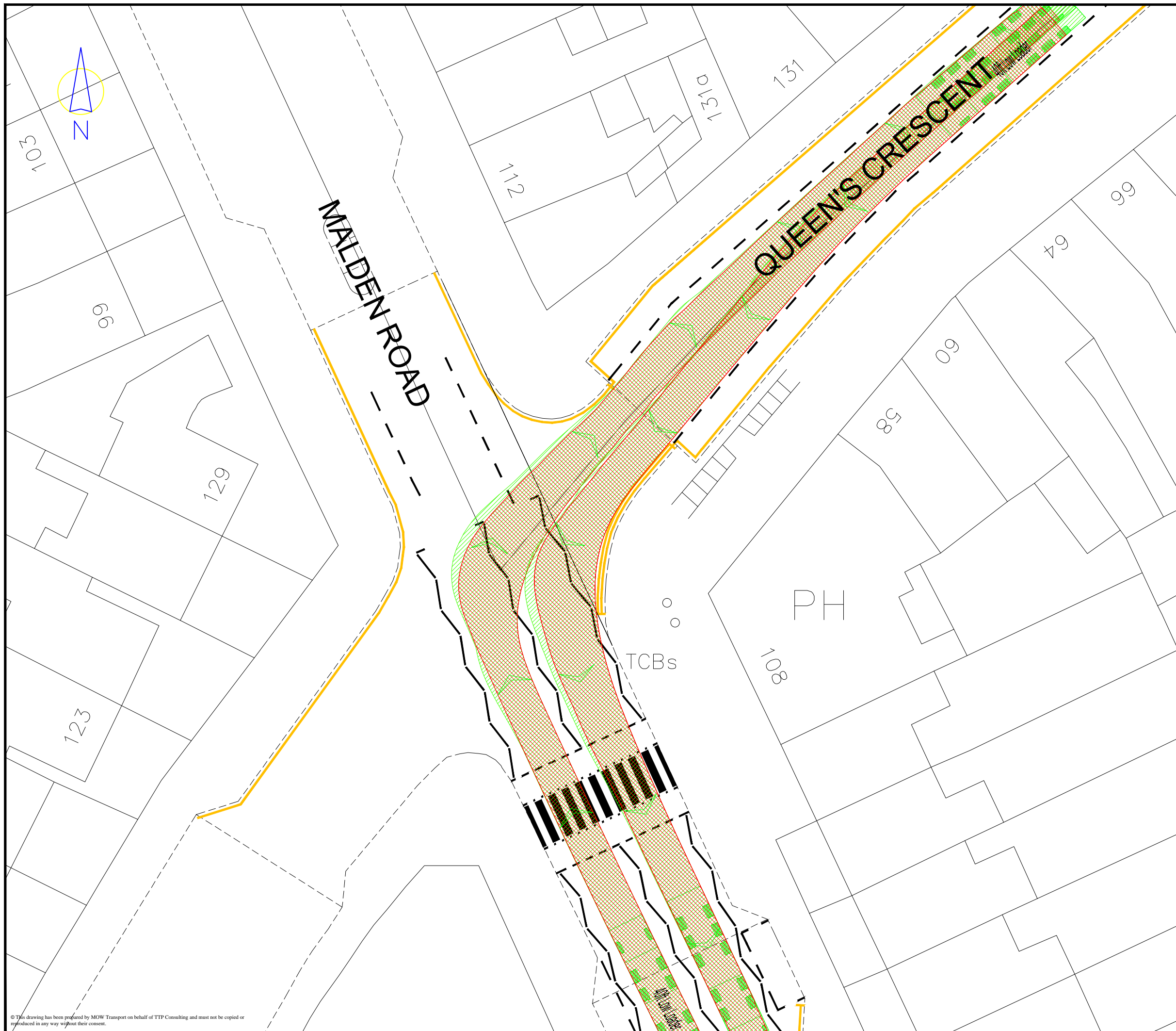
Drawn	MW	02.10.13
Checked	NB	02.10.13



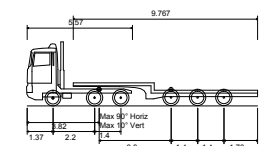
131-151 Great Titchfield Street
 London
 W1W 5BB
 Tel. No. 020 3008 8940

Drawing Number	Rev
___-BLR-AT-202	.

© This drawing has been prepared by MOW Transport on behalf of TTP Consulting and must not be copied or reproduced in any way without their consent.



Rev	Details	Drawn	Checked	Date



40ft Low Loader

Overall Length	12.200m
Overall Width	2.500m
Overall Body Height	3.396m
Min Body Ground Clearance	0.320m
Max Track Width	2.500m
Lock to Lock Time	6.00s
Kerb to Kerb Turning Radius	6.790m

Notes:
 1. This is not a construction drawing and is intended for illustrative purposes only.

Client
 Rydon Construction

Project
 Bacton Low Rise

Drawing Title
 Swept Path Analysis Using a 40ft Low Loader

Scale
 1:250

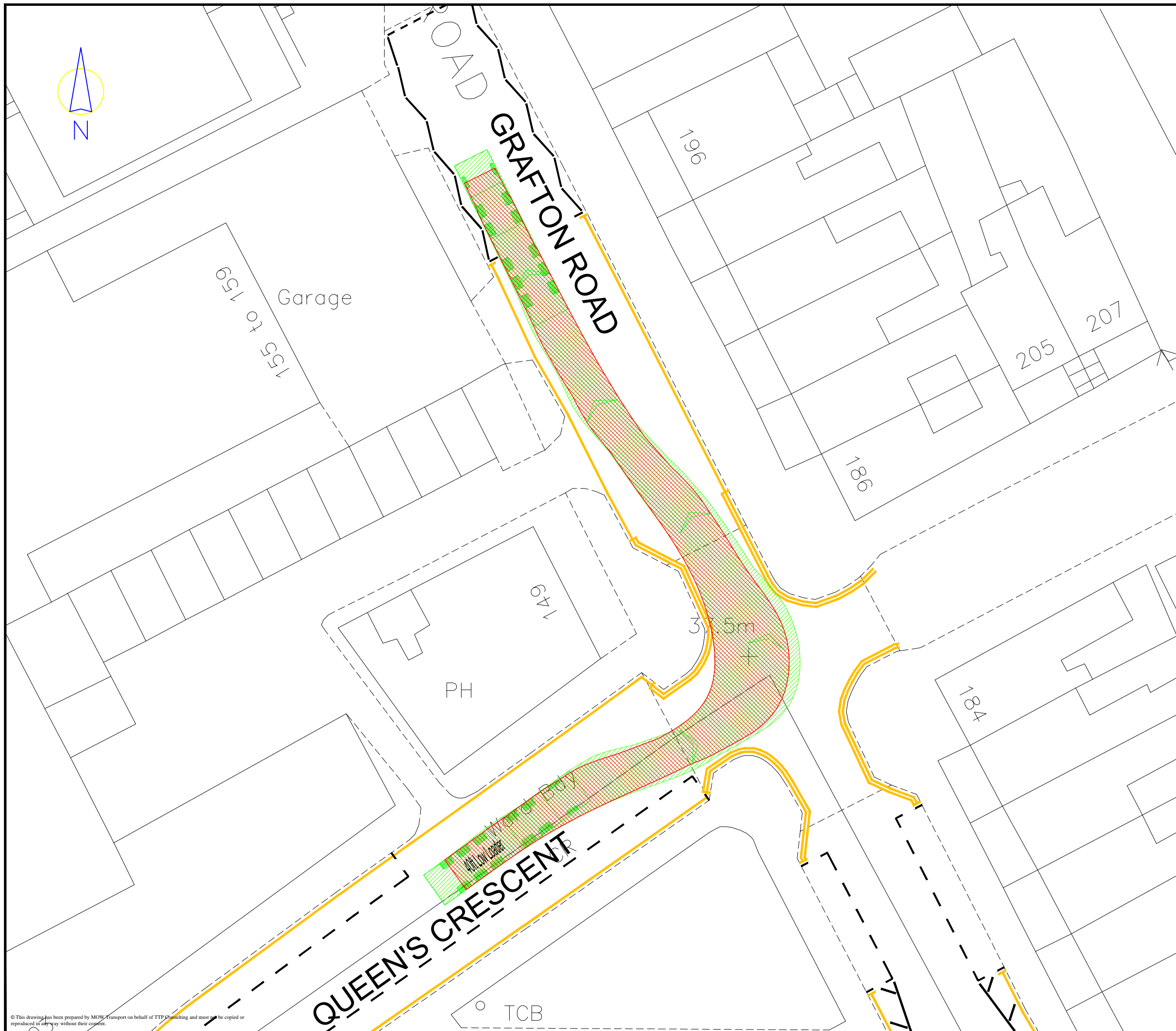
Drawn	MW	02.10.13
Checked	NB	02.10.13



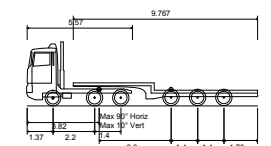
131-151 Great Titchfield Street
 London
 W1W 5BB
 Tel. No. 020 3008 8940

Drawing Number
 -BLR-AT-203

© This drawing has been prepared by MOW Transport on behalf of TTP Consulting and must not be copied or reproduced in any way without their consent.



Rev	Details	Drawn	Checked	Date



40ft Low Loader
 Overall Length 12.200m
 Overall Width 2.500m
 Overall Body Height 3.396m
 Min Body Ground Clearance 0.320m
 Max Track Width 2.500m
 Lock to Lock Time 6.00s
 Kerb to Kerb Turning Radius 6.790m

Notes:
 1. This is not a construction drawing and is intended for illustrative purposes only.

Client
 Rydon Construction

Project
 Bacton Low Rise

Drawing Title
 Swept Path Analysis Using a 40ft Low Loader

Scale
 1:250

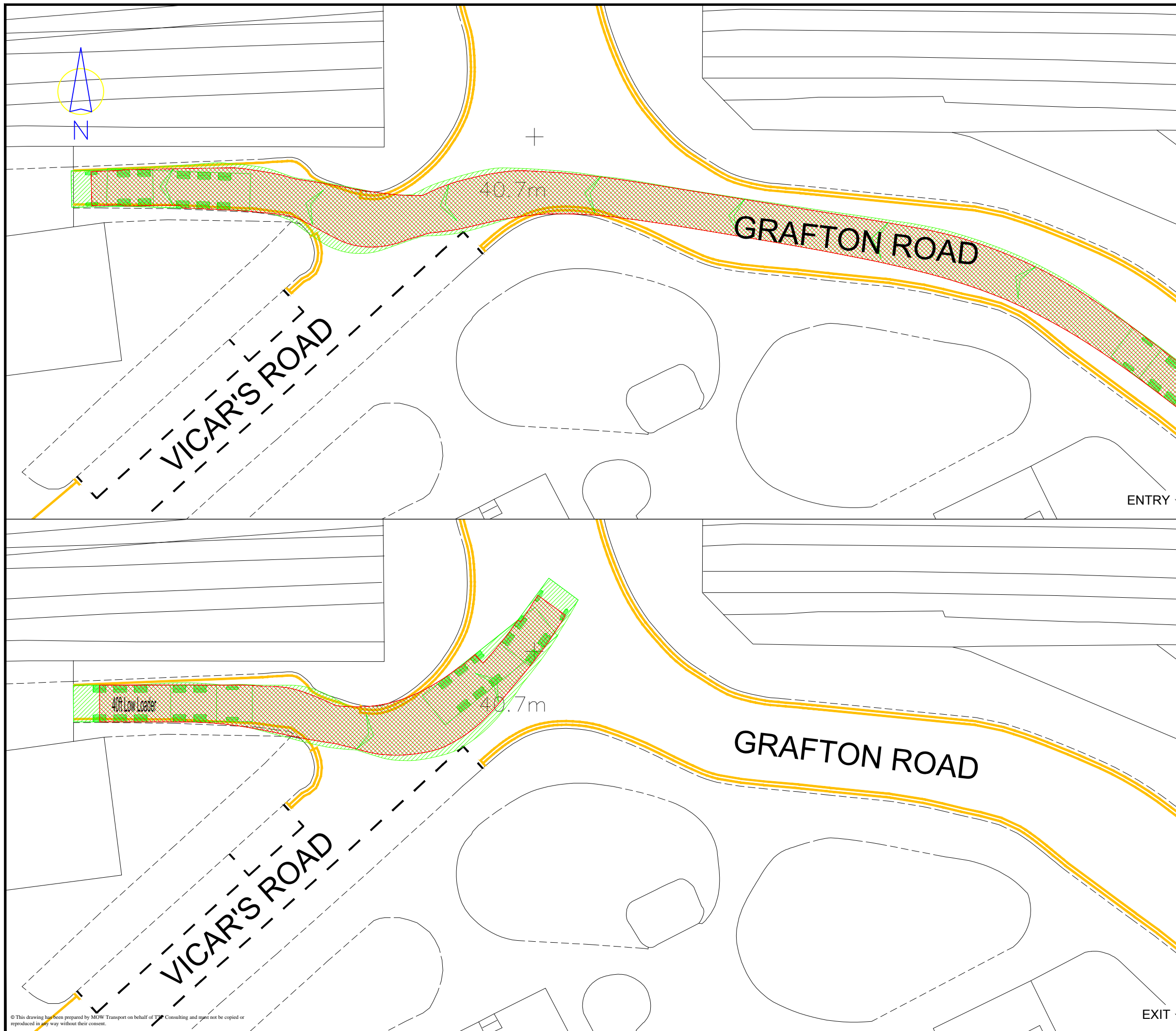
Drawn	MW	02.10.13
Checked	NB	02.10.13



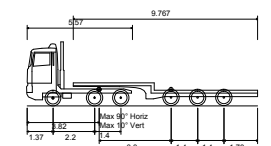
131-151 Great Titchfield Street
 London
 W1W 5BB
 Tel. No. 020 3008 8940

Drawing Number	Rev
___-BLR-AT-204	.

© This drawing has been prepared by MOW Transport on behalf of TTP Consulting and must not be copied or reproduced in any way without their consent.



Rev	Details	Drawn	Checked	Date



40ft Low Loader

Overall Length	12.200m
Overall Width	2.500m
Overall Body Height	3.396m
Min Body Ground Clearance	0.320m
Max Track Width	2.500m
Lock to Lock Time	6.00s
Kerb to Kerb Turning Radius	6.790m

Notes:
 1. This is not a construction drawing and is intended for illustrative purposes only.

Client
 Rydon Construction

Project
 Bacton Low Rise

Drawing Title
 Swept Path Analysis Using a 40ft Low Loader

Scale
 1:250

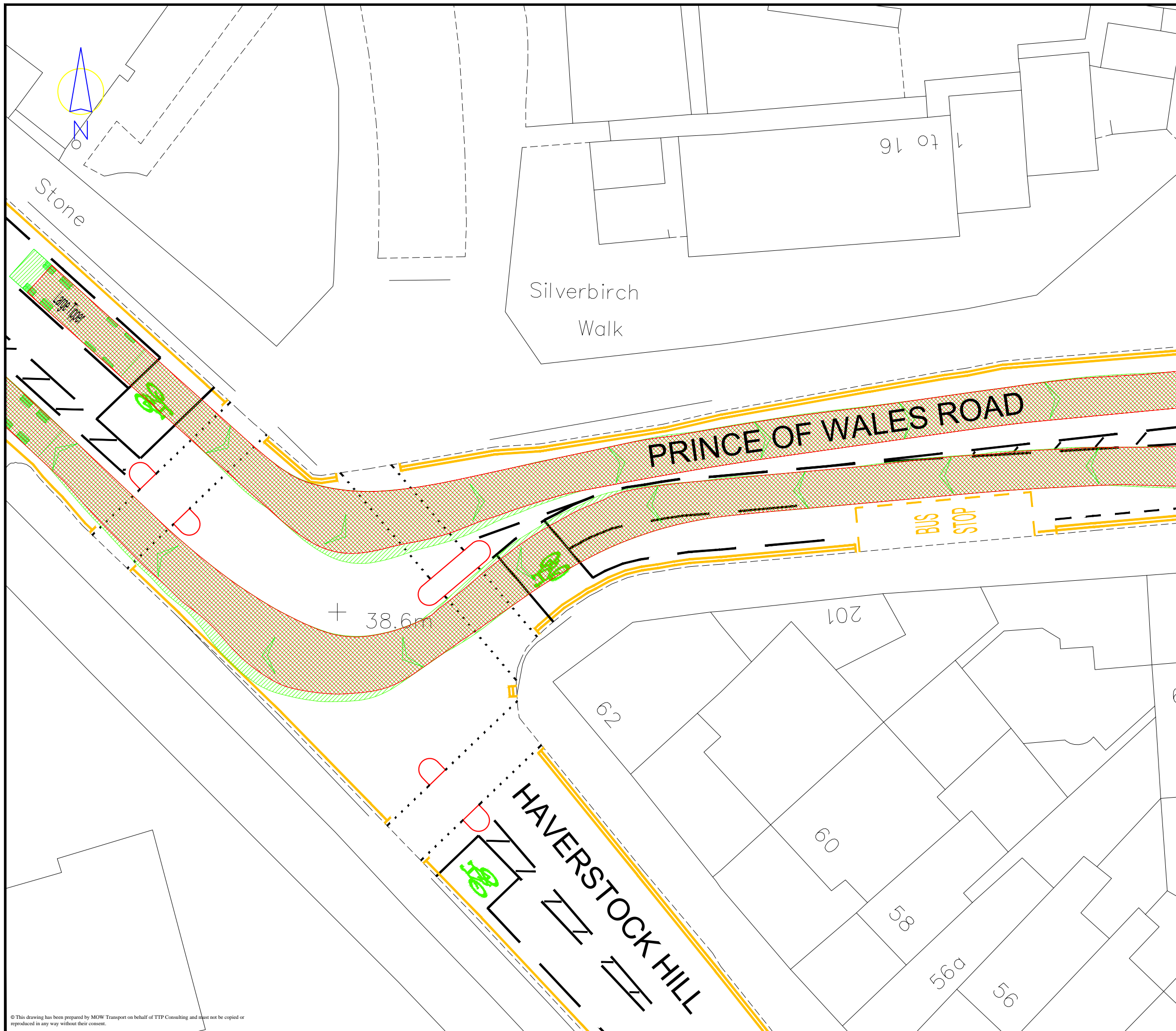
Drawn	MW	02.10.13
Checked	NB	02.10.13



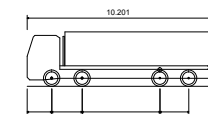
131-151 Great Titchfield Street
 London
 W1W 5BB
 Tel. No. 020 3008 8940

Drawing Number	Rev
___-BLR-AT-205	.

© This drawing has been prepared by MOW Transport on behalf of TTP Consulting and must not be copied or reproduced in any way without their consent.



Rev	Details	Drawn	Checked	Date



Large Tipper
 Overall Length 10.201m
 Overall Width 2.500m
 Overall Body Height 2.893m
 Min Body Ground Clearance 0.343m
 Max Track Width 2.500m
 Lock to Lock Time 6.00 sec
 Kerb to Kerb Turning Radius 11.550m

Notes:
 1. This is not a construction drawing and is intended for illustrative purposes only.

Client
 Rydon Construction

Project
 Bacton Low Rise

Drawing Title
 Swept Path Analysis Using a Large Tipper

Scale
 1:250

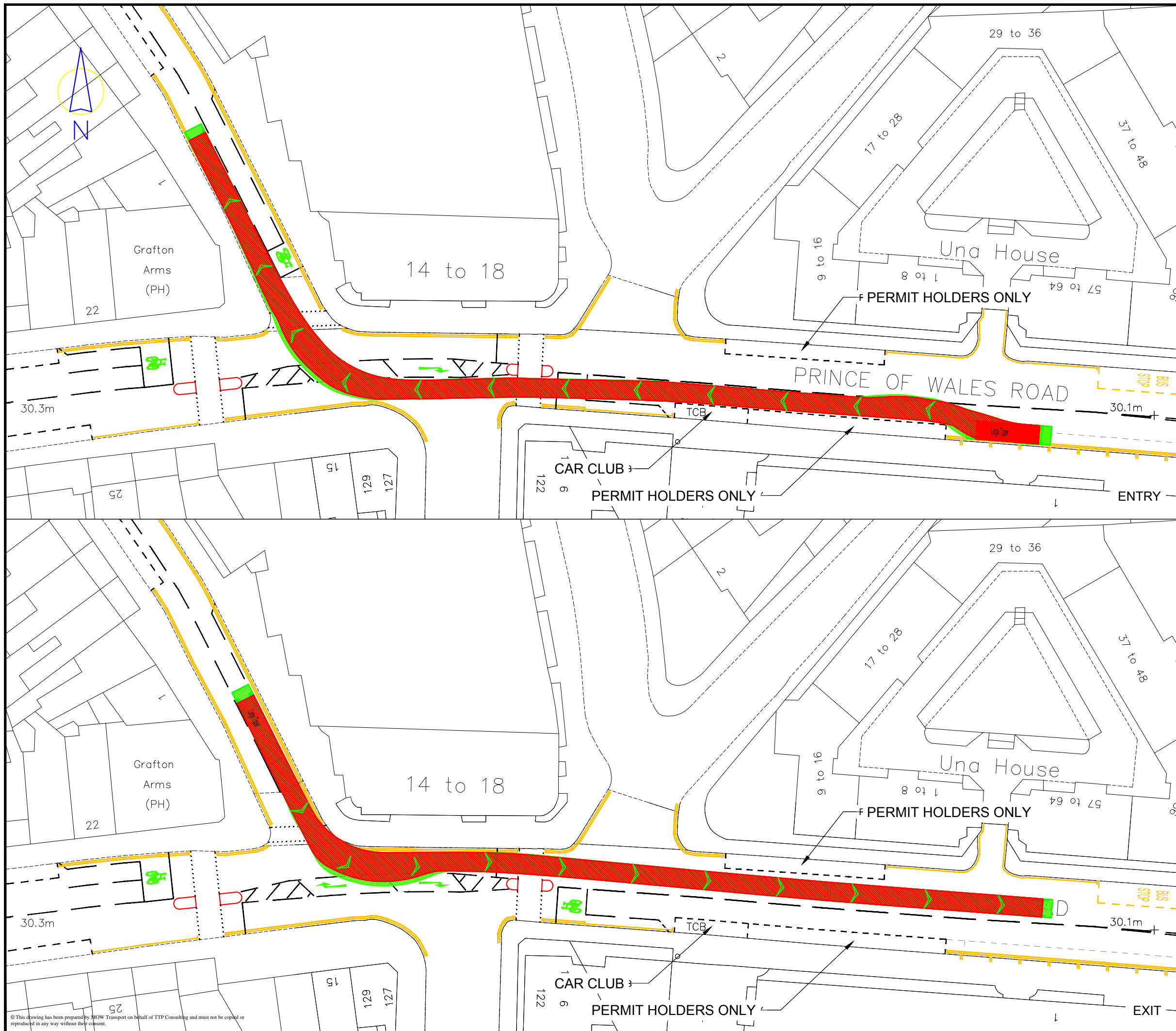
Drawn	MW	02.10.13
Checked	NB	02.10.13



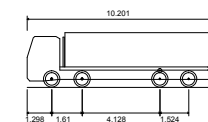
131-151 Great Titchfield Street
 London
 W1W 5BB
 Tel. No. 020 3008 8940

Drawing Number
 -BLR-AT-206

© This drawing has been prepared by MOW Transport on behalf of TTP Consulting and must not be copied or reproduced in any way without their consent.




Rev	Details	Drawn	Checked	Date



Large Tipper
 Overall Length 10.201m
 Overall Width 2.500m
 Overall Body Height 2.893m
 Min Body Ground Clearance 0.343m
 Max Track Width 2.500m
 Lock to Lock Time 6.00 sec
 Kerb to Kerb Turning Radius 11.550m

Notes:
 1. This is not a construction drawing and is intended for illustrative purposes only.

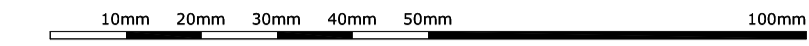
Client	Rydon Construction		
Project	Bacton Low Rise		
Drawing Title	Swept Path Analysis Using a Large Tipper		
Scale	1:500		
Drawn	MW	31.03.14	
Checked	NB	31.03.14	
 transport planning specialists			
111 - 113 Great Portland Street London W1W 6QQ Tel. No. 0207 1000 753			
Drawing Number	2013-1636-AT-202		Rev

© This drawing has been prepared by MOW Transport on behalf of TTP Consulting and must not be copied or reproduced in any way without their consent.

DO NOT SCALE Copyright © Rolton Group Ltd 2014

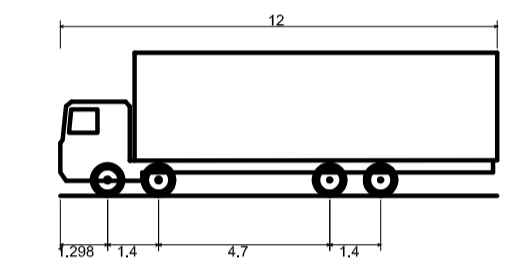
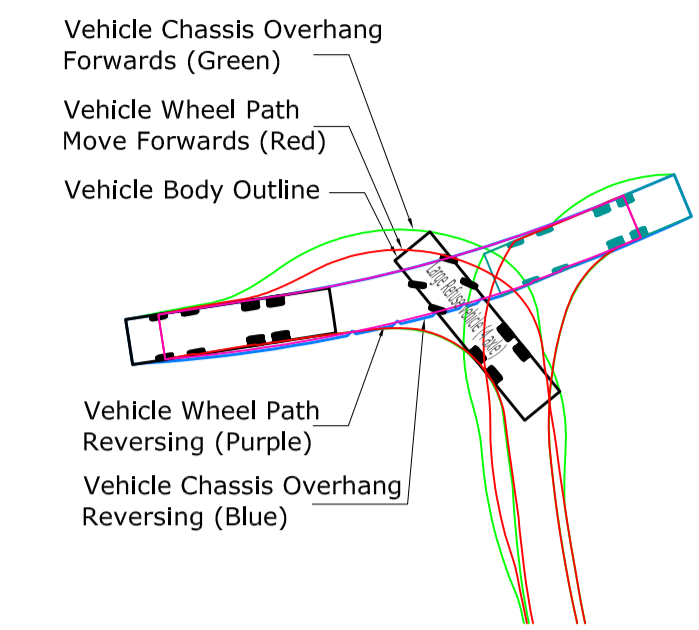
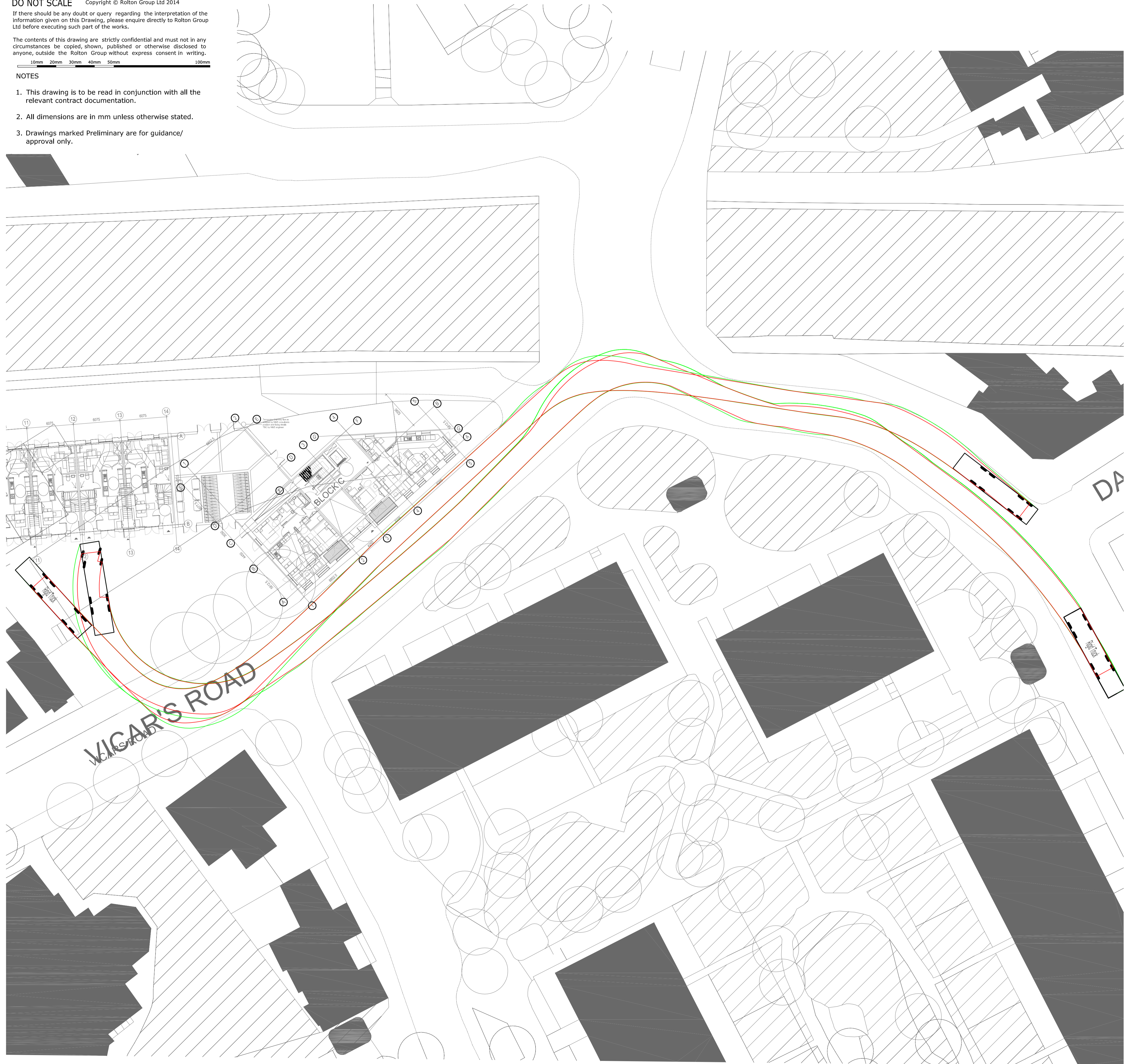
If there should be any doubt or query regarding the interpretation of the information given on this Drawing, please enquire directly to Rolton Group Ltd before executing such part of the works.

The contents of this drawing are strictly confidential and must not in any circumstances be copied, shown, published or otherwise disclosed to anyone, outside the Rolton Group without express consent in writing.



NOTES

1. This drawing is to be read in conjunction with all the relevant contract documentation.
2. All dimensions are in mm unless otherwise stated.
3. Drawings marked Preliminary are for guidance/ approval only.



Rigid Truck	12,000m
Overall Length	2,500m
Overall Width	3,928m
Overall Body Height	0,412m
Min Body Ground Clearance	2,471m
Track Width	6,00s
Lock to Lock Time	11,900m
Kerb to Kerb Turning Radius	



ROLTON GROUP
ENGINEERING THE FUTURE

Telephone +44 (0)870 726 0000
www.rolton.com

@RoltonGroup
rolton-group

- THE CHARLES PARKER BUILDING
MIDLAND ROAD, HIGHAM FERRERS
NORTHANTS NN10 8DN
- ONE MINERVA BUSINESS PARK
LYNCH WOOD
PETERBOROUGH PE2 6FT
- THE DAVID ROLTON BUILDING
TWELVE QUARTZ POINT
STONEBRIDGE ROAD
BIRMINGHAM B46 3JL

P2	30.05.14	Preliminary Issue	SDP
P1	24.01.14	Preliminary Issue	SDP
Rev.	Date	Description of Issue	Chkd

Revisions

Issue Purpose:

PRELIMINARY

Project
**Bacton Low Rise
Camden**

Drawing Title:
**Vehicle Tracking
Sheet 4**

Designer's Risk Assessment Reference:
12-0083 XDRA 001

Specification Reference:

Drawn By: **RC** Checked By: **SDP**

Scales: **1:250@A1** Date: **Jan.14**
1:500@A3

Drawing No. Rev.

APPENDIX E

Phase 1 Site Traffic Management Plan

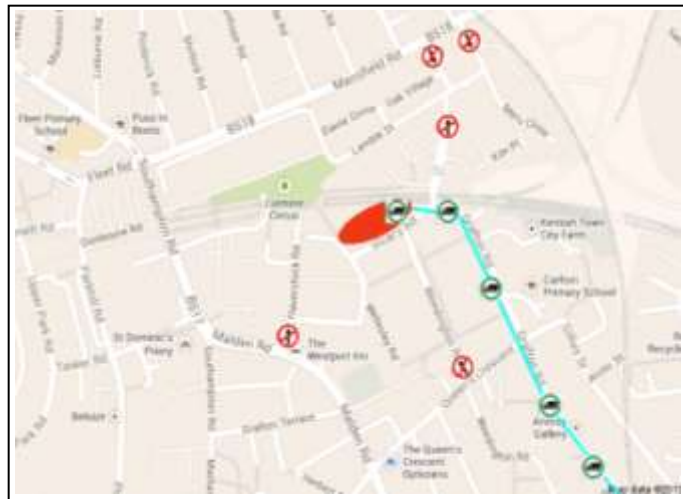
TRAFFIC MANAGEMENT PLAN Rev B / 06/03/14
 DHO Site, Wellesley Road, Gospel Oak, NW5 4PA

Site Location and Routes

Entrance set up

Delivery vehicles are expected to follow the delivery guidelines detailed within this traffic plan. **WARNING** do not attempt to enter site without having given prior notice of your arrival, any unexpected vehicles will be turned away at no abortive cost to Rydon Construction. Having arrived at site drivers will be met by the Rydon Traffic Team and banked on to site. Articulated vehicles will be asked to drive over Grafton Bridge and then will be reversed back through the site gates. Upon exiting site vehicles will be guided back out onto Grafton Road by the site traffic marshals.

Do not attempt to enter or exit site without the presence of the site traffic team. This is to ensure the safety of the both site personnel and the general public.



Vehicles associated with the DHO site are only permitted to access via Grafton Road!

No reversing on site will be permitted until barriers and banksman are in place to protect the public and site personnel at all times.

Site Contact: Max Clark 07824 372224



Site rules regarding deliveries

Site Speed Limit 5mph.

Deliveries will only be accepted between the hours of 08:00 and 16:15 Mon-Fri 08:00 to 13:00 Saturday. Saturday by prior arrangement only.

No vehicles will enter or leave the sites between 8:30 to 9:30 and 15:00 to 16:00 during school term times, save ready mix concrete deliveries between 08:00 and 17:30

All deliveries that do not keep to the Traffic Management Plan will be turned away with no abortive costs to Rydon.

All Pedestrians must keep within the pedestrian walkways shown on the Site Plan.

All drivers must report to the site office or to the gateman.

All vehicles movements within the construction area must be under the guidance of a banksman at all times.

All reversing commercial vehicles must have an audible warning device, if not available a banksman must oversee all vehicle movements.

All drivers must wear PPE while on site this includes safety helmet, hi-vis clothing, gloves and boots plus other PPE as directed by the RAMS for the activities being carried out.

Delivery of heavy, awkward loads or fuel must have an agreed Risk Assessment Method Statement signed by Operational Management or the delivery may be rejected.

Depending on weather and site conditions all vehicles leaving site will require wheel washing.

No Parking across the site entrance, park in agreed locations as determined by site plan.

No Site staff, contractor or visiting car parking is available on site.

All vehicles must be parked off the road for unloading.

Correct documentation for vehicles with Hiab, including thorough examination certificates and driver competency to operate the machinery.

Appropriate fall arrest equipment to be available if the vehicle does not have side guards.