

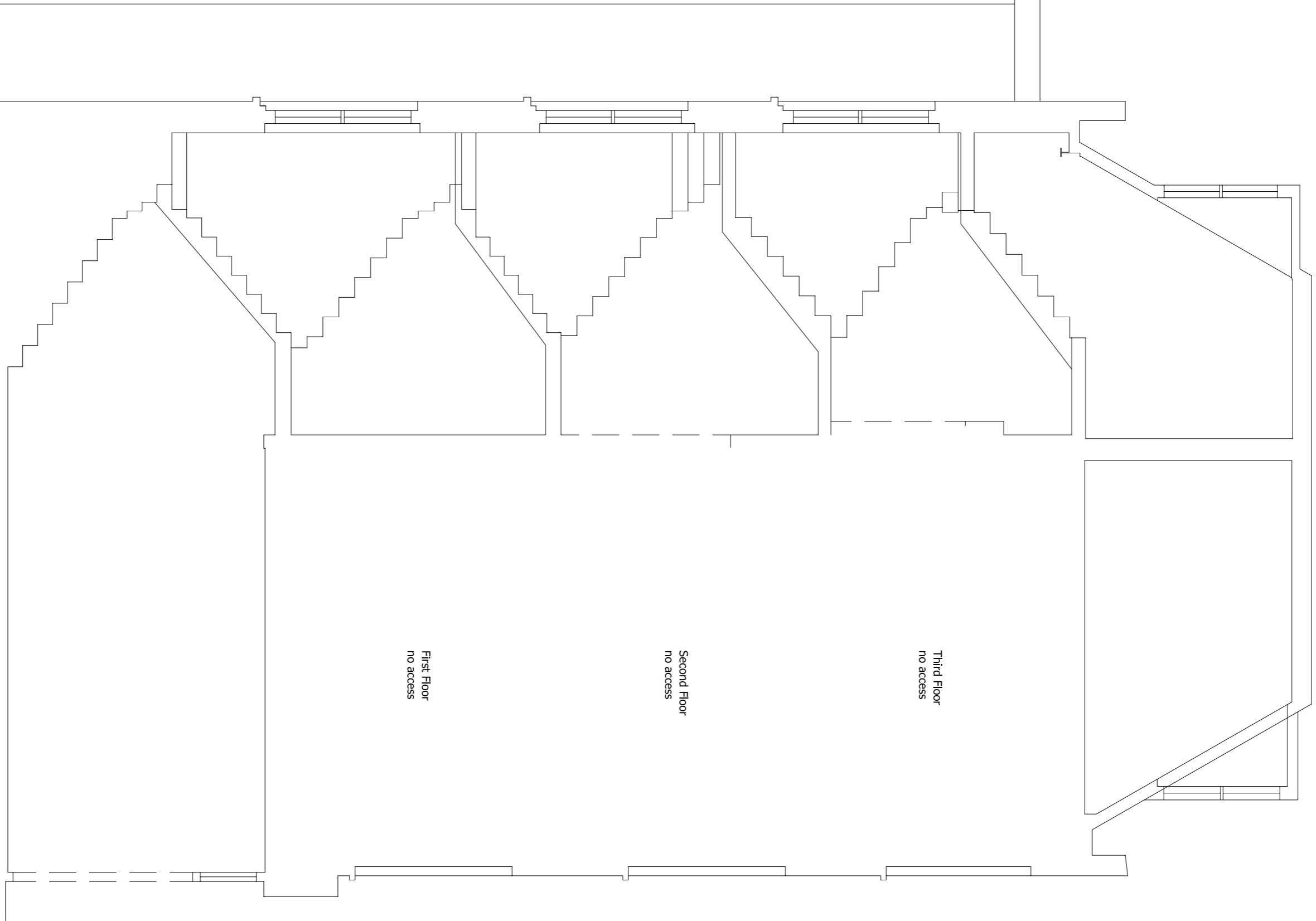
NOTES
 OSBM datum value 22.460m located on the junction of
 St. Andrew's Church and Nottingham Court on the south-east
 face. South angle.

ABBREVIATIONS

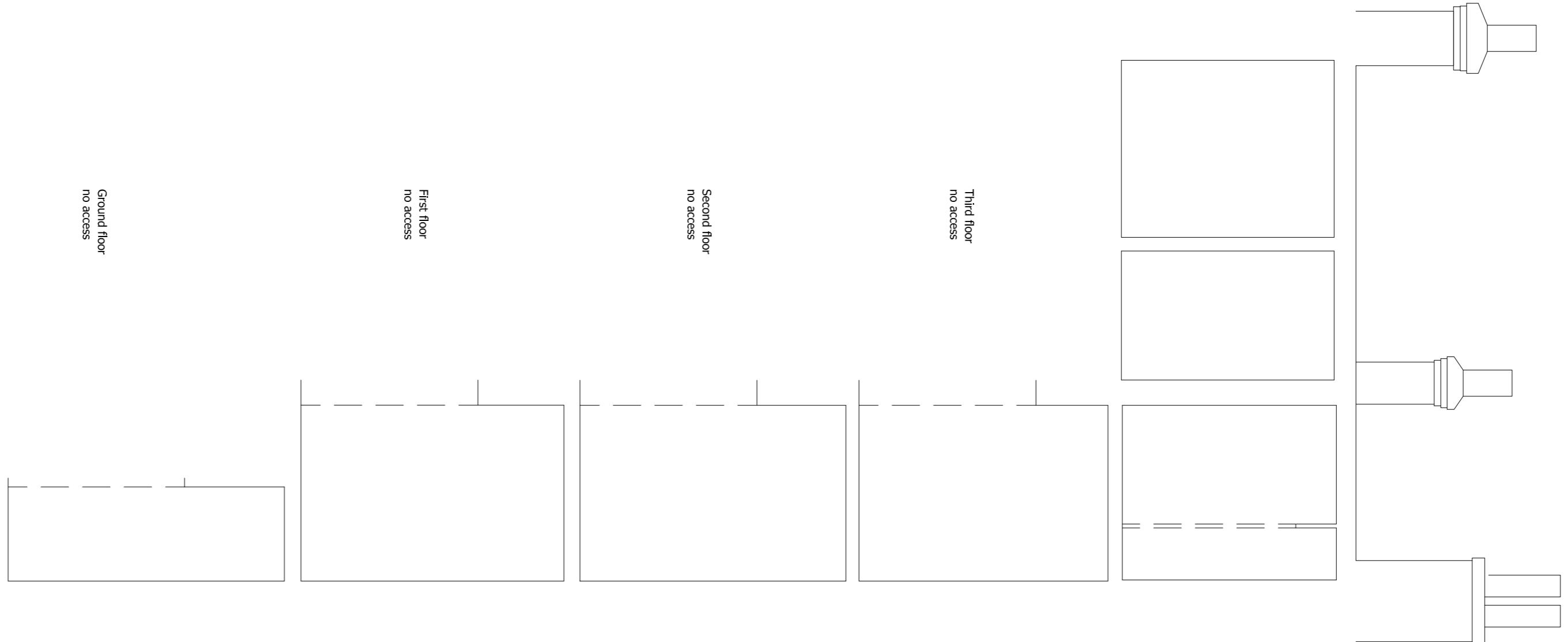
B	Ballard
BB	Bellisha Beacon
BL	Basement Light
BS	British Telecom
BT	British Telecom Cover
CATV	Cable Communications Cover
DP	Down Pipe
E	Electrical Inspection Cover
ER	Earthing Rod
EH	Fire Hydrant
G/V	Gas Valve
IB	Illuminated Ballard
IC	Inspection Cover
IP	Lamp Post
MH	Manhole
MH	Manhole
OH	Overhead
OS	Overhead Post
PB	Post Box
RE	Rodding Eye
RS	Road Sign
RWP	Rain Water Pipe
SC	Stop Cock
SP	Soil Pipe
ST	Street Light
TB	Traffic Bollard
TCB	Telephone Call Box
TL	Traffic Light
TP	Telegraph Pole
U	Unidentified Utility
ULB	Underneath Utility
UM	Underneath Manhole
UP	Underneath Pad
WM	Water Meter
WW	Water Valve

Bm L/L	Beam Level
C L/L	Celling Level
Cn L/L	Centre Line Level
Ft L/L	Floor Level
Hd L/L	Head Level
IL	Invert Level
L/L	Level
L/L L/L	General Spot Level
Over L/L	Overpass Level
SP L/L	Spot Level
W L/L	Wall Level

F/C *****
 C/H *****
 DH = *****
 Floor to Cill dimension
 Cill to Head dimension
 Door head height



Section A-A
 Scale 1:50



Section B-B
 Scale 1:50

Rev. A 20-08-14 Window detail to the basement amended (LRM)

Client
 Brooks / Murray Architects
 8-10 New North Place
 London
 EC2A 4JA

Site Address
 3 Betterton Street
 London
 WC2H 9BH

LRM Survey Services Ltd.
 Tel: 07793 74197
 Web: www.lrm-survey.co.uk
 Email: enquiries@lrm-survey.co.uk

Existing			
Sections A-A & B-B			
Date	Scale	Surveyed	Drawn
08-09-14	1:100@A3	LRM	LRM
Drawing No.	14/BM/388/04		Rev