

[illegible]

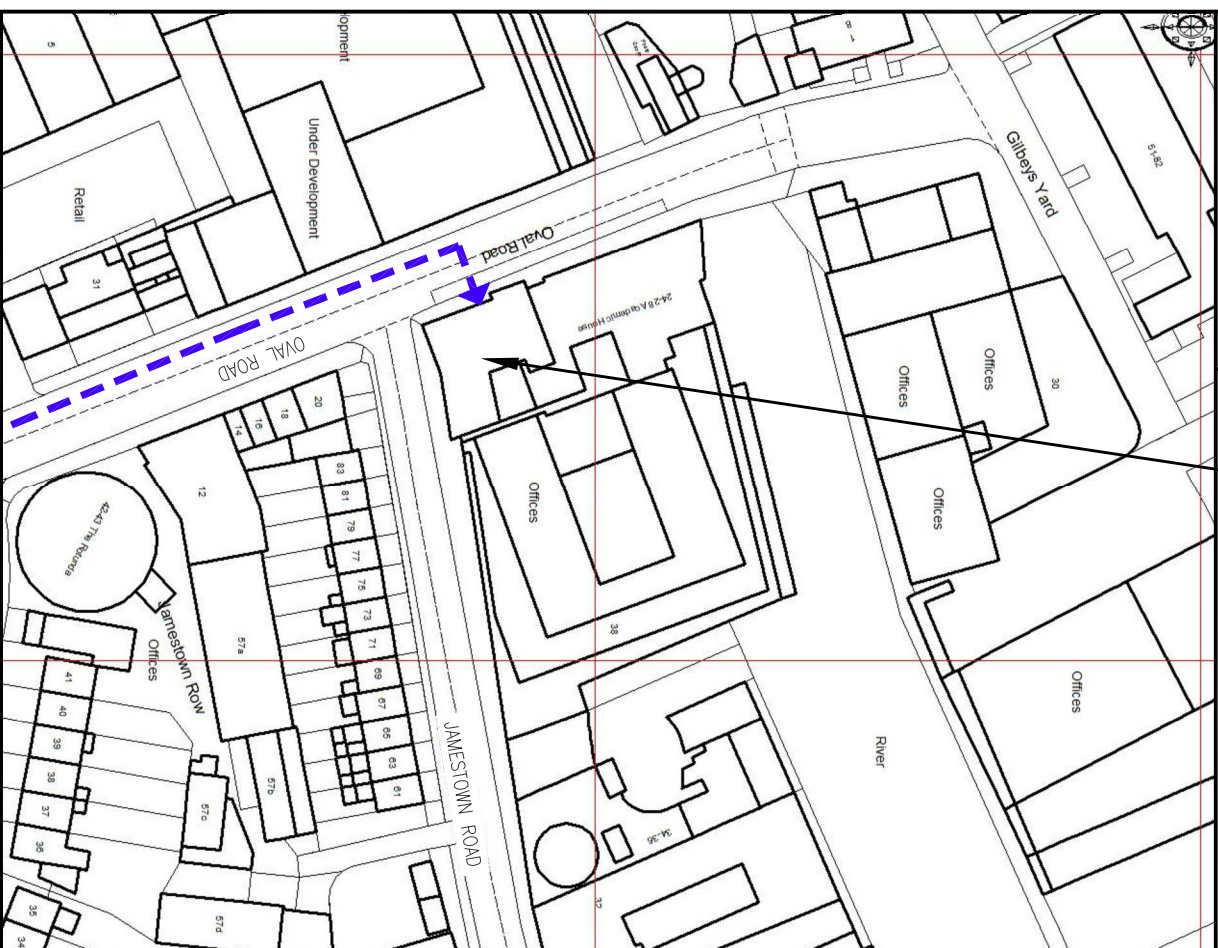
A detailed, colorful map of the Camden area in London, showing streets, parks, and landmarks. The map is oriented with North at the top. Key areas labeled include Camden Town, Regent's Park, and the Camden Market area. The map is part of a larger collection, with other maps visible in the background.



(Scale 1:50000)



SITE LOCATION




(Scale 1:1250)

5 285 00

5 286 00

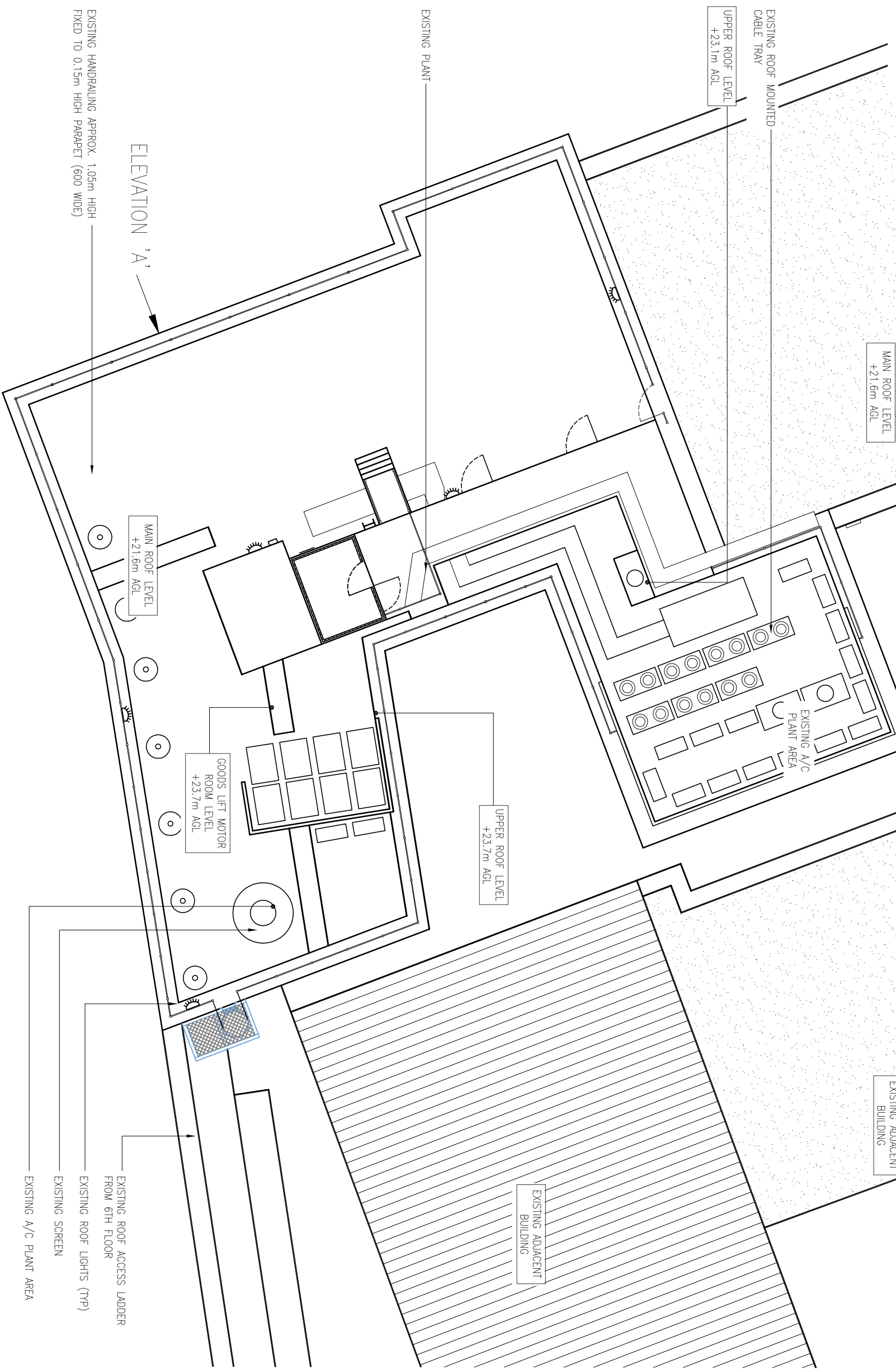
NOTES:
1. ALL DIMENSIONS ARE IN MM UNLESS NOTED OTHERWISE
2. SITE ACCESS:
FROM THE END OF THE M1 (JUNCTION 1) AT
ROUNDABOUT TAKE 1ST EXIT THEN MERGE ONTO A406. AT
BRIGHT CROSS INTERCHANG, BRANCH LEFT THEN AT
ROUNDABOUT TAKE 3RD EXIT THEN MERGE ONTO THE A41.
AT TRAFFIC SIGNALS CONTINUE FORWARD. AT TRAFFIC
SIGNALS TURN RIGHT ONTO RUNCHELY ROAD, A41. AT
SWISS COTTAGE TRAFFIC SIGNALS CONTINUE FORWARD.
TRAFFIC SIGNALS CONTINUE FORWARD ONTO AVENUE ROAD,
B525. AT TRAFFIC SIGNALS TURN LEFT ONTO THE A5205.
AT TRAFFIC SIGNALS TURN LEFT, TURN LEFT ONTO A5205.
BRANCH LEFT THEN MERGE ONTO OVAL ROAD. SITE IS
LOCATED ON THE RIGHT HAND SIDE ON ROOF OF
ACADEMIC HOUSE, 24-28 OVAL ROAD AT THE JUNCTION
OF JAMESTOWN ROAD, CADWEN, LONDON, NW11 7DU.
3. SURROUNDING AREA IS - COMMERCIAL/RESIDENTIAL,
4. DISTANCE TO PUBLIC HIGHWAY APPROX. 5m


The Bam
Elms Farm
Hobb Lane, Daresbury
Warrington, Cheshire
WA4 5LS
Tel: 01925 741 810
Fax: 01925 740 621

Cell Name	opt
ACADEMIC HOUSE	-


ACADEMIC HOUSE
24-28 OVAL ROAD
LONDON
NW1 7DU

Drawing Title:				
PROPOSED LOCATION MAPS				
Purpose of issue:				
PLANNING				
Drawing Number:				
100				
Scale:	As Shown	Drawn:	Date:	Issue:
Checked:	AK	DI	20.05.14	V6
Date:	20.05.14	Approved:	Date:	
	AK		20.05.14	



1:125

B	Minor Amendments	J/C	WR	07.07.14
A	Page Added	AR	J/C	17.06.14
REV	MODIFICATION	BY	CH	DATE



vodafone
CTIL

148390	41812	36725
Site Address / Contact Details		

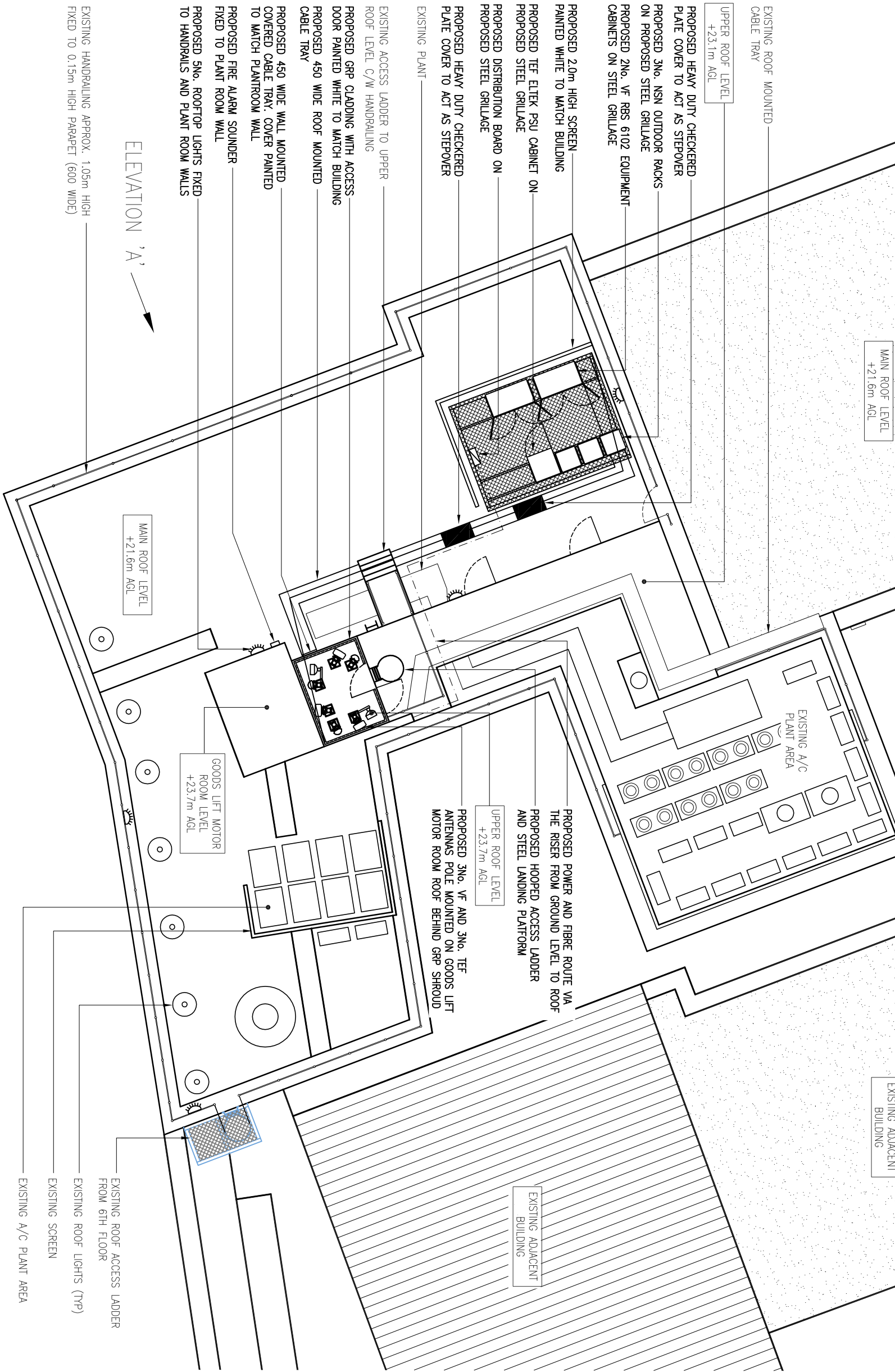
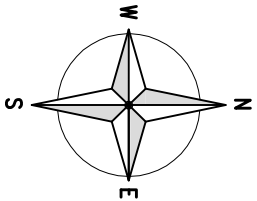
NW1 7DJ

EXISTING LOCATION PLAN

PLANNING

200

AK	20.05.14	AK	20.05.14
----	----------	----	----------




PROPOSED SITE LOCATION

1:125

N.G.R. E: 528550 N: 183981

- NOTES:
1. ALL DIMENSIONS ARE IN MILLIMETRES UNLESS OTHERWISE SPECIFIED
 2. ASSUME ALL SITE DETAILS ARE EXISTING UNLESS OTHERWISE NOTED.
 3. THE DRAWINGS COMPLY WITH STANDARD ICNIRP GUIDELINES.

B	Minor Amendments		JC	WR	07.07.14
A	Issued for Approval		DI	AK	20.05.14
REV	MODIFICATION		BY	CH	DATE



The Barn
Elms Farm
Hobb Lane, Daresbury
Warrington, Cheshire
WA4 5LS
Tel: 01925 741 810
Fax: 01925 740 621



CTIL

Cell Name		Opt
ACADEMIC HOUSE		-
Cell ID No		
CORNERSTONE (C/TIL)	TEF	VF
148390	41812	36725
Site Address / Contact Details		
ACADEMIC HOUSE 24-28 OVAL ROAD LONDON NW1 7DU		

Drawing Title: PROPOSED LOCATION PLAN

Purpose of Issue: PLANNING

Drawing Number: 201

Scale: As Shown	Drawn: DI	Date: 20.05.14	Issue:
Checked: AK	Date: 20.05.14	Approved: AK	Date: 20.05.14
			V6

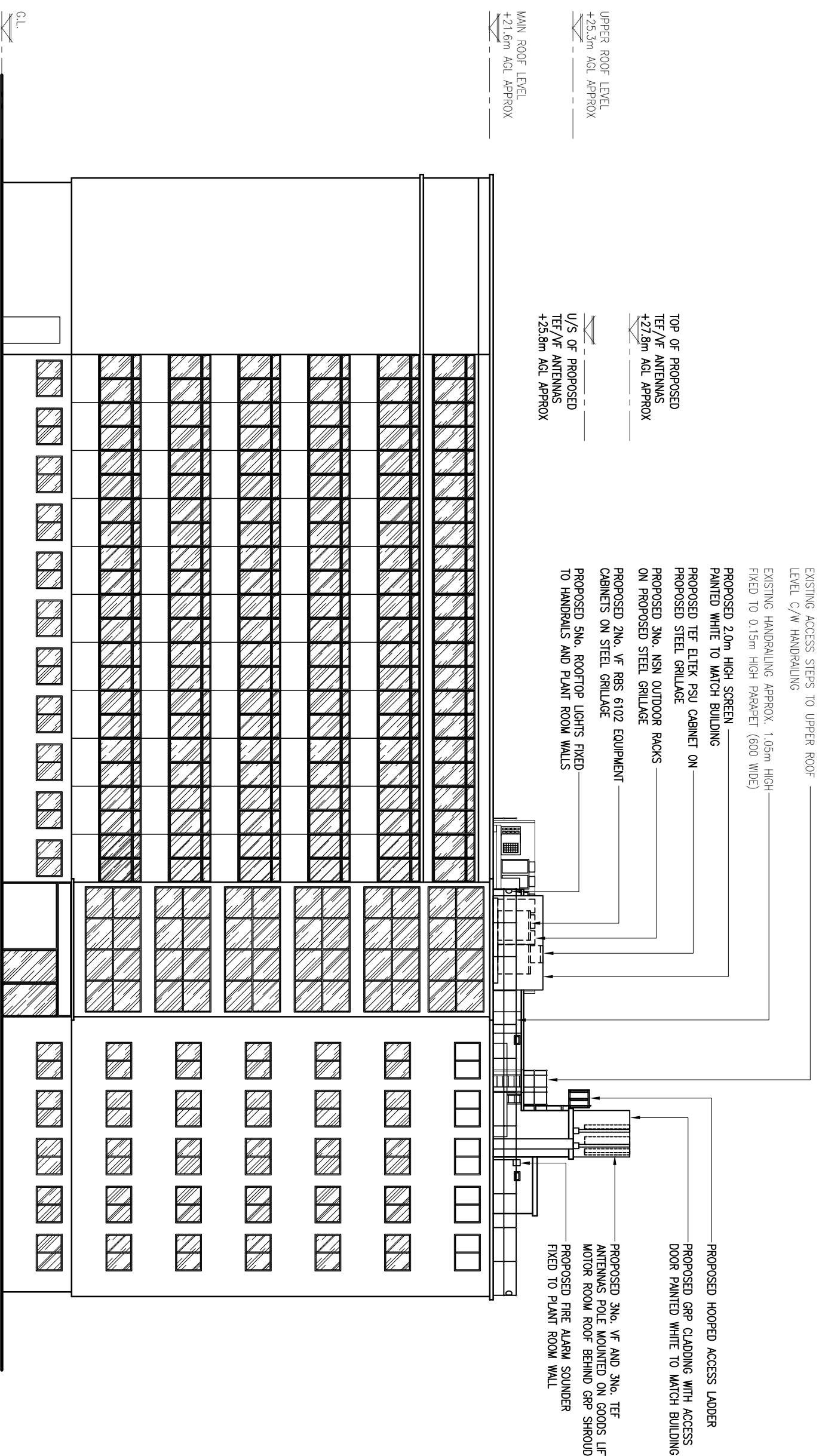
N.G.R.	E: 528550	N: 183981
--------	-----------	-----------

NOTES:


1. ALL DIMENSIONS ARE IN MILLIMETRES
UNLESS OTHERWISE SPECIFIED


2. ASSUME ALL SITE DETAILS ARE EXISTING UNLESS OTHERWISE NOTED

3. THE DRAWINGS COMPLY WITH STANDARD ICNIRP GUIDELINES.



D	Minor Amendments	AR	JC	14.07.14
C	Minor Amendments	JC	WR	07.07.14
B	Minor Amendments	AR	JC	13.06.14
A	Issued for Approval	DI	AK	20.05.14
REV	MODIFICATION	BY	CH	DATE


The Barn
Elms Farm
Hobb Lane, Daresbury
Warrington, Cheshire
WA4 5LS
Tel: 01925 741 810
Fax: 01925 740 621



Vodafone
CTIL

Cell Name	Opt
ACADEMIC HOUSE	-

Cell ID No		
CORNERSTONE (CTL)	TEF	VF

148390	41812	36725
Site Address / Contact Details		

ACADEMIC HOUSE
24-28 OVAL ROAD
LONDON
NW1 7DJ

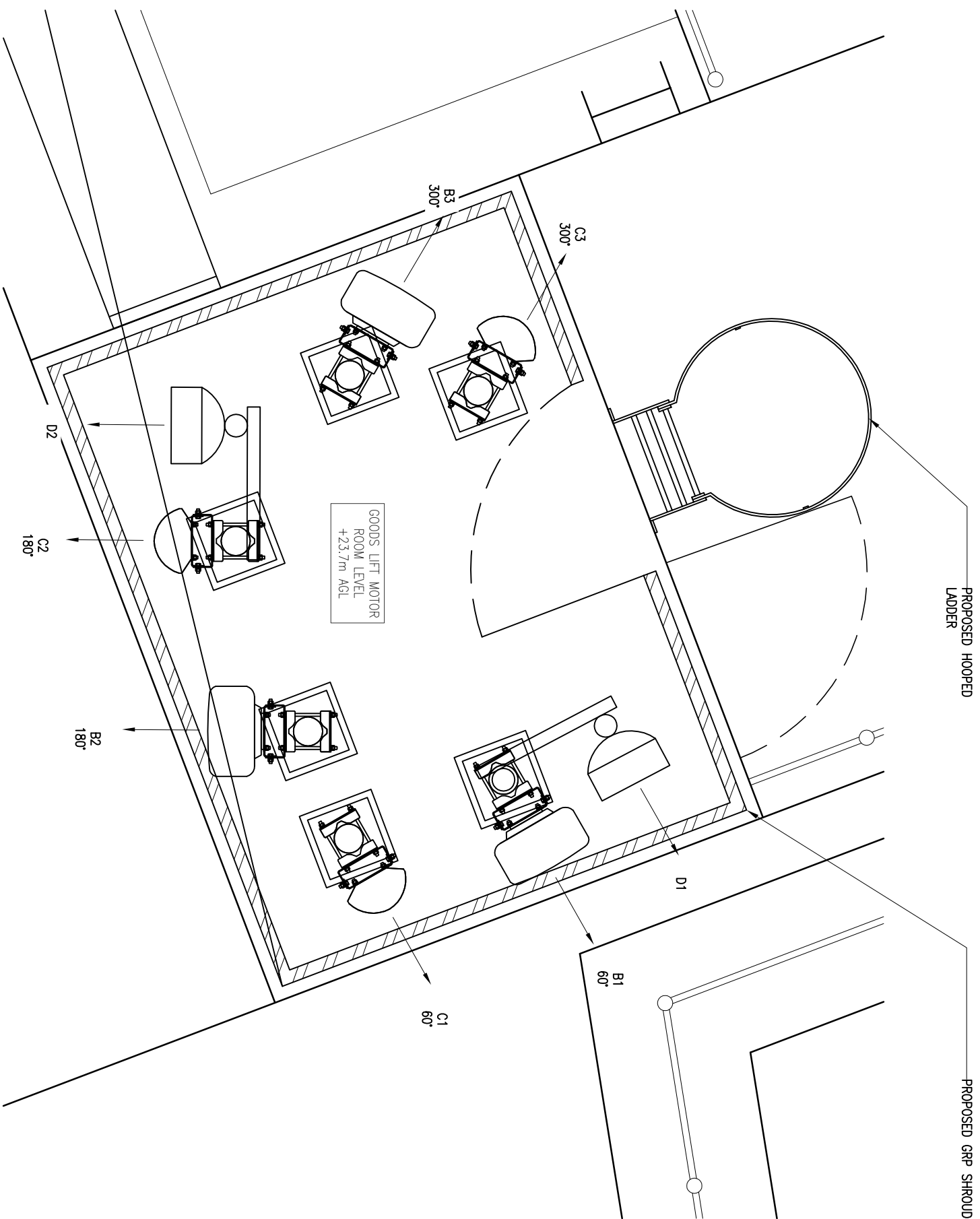
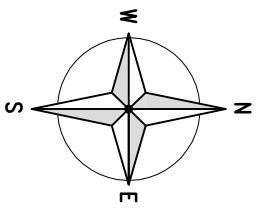
Drawing Title:

PROPOSED ELEVATION

Purpose of issue:	PLANNING
-------------------	----------

Drawing Number: 301

Scale:		Drawn:	Date:	Issue:
As Shown		DI	20.05.14	
Checked:	Date:	Approved:	Date:	V6
AK	20.05.14	AK	20.05.14	




PROPOSED ANTENNA LAYOUT

N.G.R.	E: 528550	N: 183981
--------	-----------	-----------

NOTES:


1. ALL DIMENSIONS ARE IN MILLIMETRES UNLESS OTHERWISE SPECIFIED
2. ASSUME ALL SITE DETAILS ARE EXISTING UNLESS OTHERWISE NOTED.
3. THE DRAWINGS COMPLY WITH STANDARD CNIRP GUIDELINES.

C	Minor Amendments	JC	WR	07.07.14	
B	Minor Amendment	DR	AK	13.06.14	
A	Issued for Approval	AI	JC	20.05.14	
REV	MODIFICATION	BY	CH	DATE	

The logo for 'caip' features the word 'caip' in a blue, lowercase, sans-serif font. Above the letters 'c' and 'a' are three concentric, curved lines in green, resembling a stylized 'C' or a signal wave.

The Barn
Elms Farm
Hobb Lane, Daresbury
Warrington, Cheshire
WA4 5LS

Tel: 01925 741 810
Fax: 01925 740 621



Vodafone
CTIL

Cell Name	Opt
ACADEMIC HOUSE	
Cell ID No	—
CORNERSTONE (CHL)	VE
TEF	

148390	41812	36/25
Site Address / Contact Details ACADEMIC HOUSE 24-28 OVAL ROAD LONDON NW1 7DJ		

Drawing Title: ANTENNA LAYOUT

Purpose of issue:	PLANNING
-------------------	----------

Drawing Number: 401

Scale:	As Shown		Drawn:	DI	Date:	20.05.14	Issue:
Checked:	AK	Date:	20.05.14	Approved:	AK	Date:	
							V6

CONFIGURATION: VF E//// - 3 SECTORS, 3 ANTENNAS, S4 HIGH		VF RF CONFIG / VOD CODE: E_VF_UK_SRB_303_260
N.G.R.	E: 528550	N: 183981
NOTES:		

EXISTING & PROPOSED ANTENNA SCHEDULE (EXISTING EQUIPMENT SHOWN GREY)																													
FEEDER/DC/FIBRE												MHA's/RRU's/BIAS T's/JUMPEERS/COMBINERS						ANTENNAS											
PROPOSED & EXISTING ANTENNAS	OPERATOR	FUNCTION	LENGTH & DIAMETER (SEE GUIDANCE NOTES BELOW)			TYPE (COAX OR DC/FIBRE)	FEEDERS QTY		DC/FIBRE QTY	DC/FIBRE LENGTH	MHA NSN QTY	MHA E-SSON QTY	RRU T QTY	BIAS T QTY	RRU TO ANTENNA JUMPER LENGTH (TO BE WITHIN MAX LENGTH ALLOWED AS PER CIL DESIGN SPEC)	MHA TO ANTENNA JUMPER LENGTH (RTOPS & GFIELDS)	COMBINERS (HIGH LEVEL)	COMBINERS (LOW LEVEL IN CABINET, CABIN ETC)	ANT. REF.	ANTENNA MANUFACTURERS PART No.	BRG	HEIGHT TO TOP (m)	HEIGHT TO U/S (m)	HEIGHT TO C/L (m)	LOCATION (POLE MOUNTED, HEADFRAME, WITHIN SPROUD ETC)	STATUS	COMMENTS		
			MF(1)	MF(11)	MF(12)		TOTAL	EXT'NG																				PROP	
SECTOR 1	PR. ANT.	PROPOSED ANTENNA	VF	1U09	⌀=18m	-	-	18m	COAX	-	2	-	-	-	-	-	-	-	-	B1d	COMMSCOPE CWPX308.10R3	60°	27.8m	25.8m	26.8m	POLE MOUNT	NEW	-	
			VF	1U21	⌀=18m	-	-	18m	COAX	-	2	-	-	-	-	-	-	-	-	B1b									
			TEF	1U09	⌀=18m	-	-	18m	COAX	-	2	-	-	-	1	-	-	-	-	L08/U09 COMBINERS	C1a	AMPHENOL 5963200	60°	27.8m	25.8m	26.8m	POLE MOUNT	NEW	-
			TEF/VF	1L08	⌀=18m	-	-	18m	COAX	-	2	-	-	-	-	-	-	-	-	-	C1b								
			TEF	1G09	⌀=18m	-	-	18m	COAX	-	2	-	-	-	-	-	-	-	-	-	C1c								
			TEF	1G18	⌀=18m	-	-	18m	COAX	-	2	-	-	-	-	-	-	-	-	-	C1d								
SECTOR 1	PR. ANT.	PROPOSED ANTENNA	TEF	1U21	⌀=18m	-	-	18m	COAX	-	2	-	-	1	-	-	-	-	-	C1e									
			VF	2U09	⌀=18m	-	-	18m	COAX	-	2	-	-	-	-	-	-	-	-	B2a	COMMSCOPE CWPX308.10R3	180°	27.8m	25.8m	26.8m	POLE MOUNT	NEW	-	
			VF	2U21	⌀=18m	-	-	18m	COAX	-	2	-	-	-	-	-	-	-	-	B2b									
			TEF	2U09	⌀=18m	-	-	18m	COAX	-	2	-	-	-	1	-	-	-	-	C2a									
			TEF/VF	2L08	⌀=18m	-	-	18m	COAX	-	2	-	-	-	-	-	-	-	-	L08/U09 COMBINERS	C2b								
			TEF	2G09	⌀=18m	-	-	18m	COAX	-	2	-	-	-	-	-	-	-	-	-	C2c	AMPHENOL 5963200	180°	27.8m	25.8m	26.8m	POLE MOUNT	NEW	-
SECTOR 2	PR. ANT.	PROPOSED ANTENNA	TEF	2G18	⌀=18m	-	-	18m	COAX	-	2	-	-	-	-	-	-	-	-	C2d									
			TEF	2U21	⌀=18m	-	-	18m	COAX	-	2	-	-	1	-	-	-	-	-	C2e									
			VF	3U09	⌀=18m	-	-	18m	COAX	-	2	-	-	-	-	-	-	-	-	B3a	COMMSCOPE CWPX308.10R3	300°	27.8m	25.8m	26.8m	POLE MOUNT	NEW	-	
			VF	3U21	⌀=18m	-	-	18m	COAX	-	2	-	-	-	-	-	-	-	-	B3b									
			TEF	3U09	⌀=18m	-	-	18m	COAX	-	2	-	-	-	1	-	-	-	-	L08/U09 COMBINERS	C3a								
			TEF/VF	3L08	⌀=18m	-	-	18m	COAX	-	2	-	-	-	-	-	-	-	-	-	C3b	AMPHENOL 5963200	300°	27.8m	25.8m	26.8m	POLE MOUNT	NEW	-
SECTOR 3	PR. ANT.	PROPOSED ANTENNA	TEF	3G09	⌀=18m	-	-	18m	COAX	-	2	-	-	-	-	-	-	-	-	C3c									
			TEF	3G18	⌀=18m	-	-	18m	COAX	-	2	-	-	-	-	-	-	-	-	C3d									
			TEF	3U21	⌀=18m	-	-	18m	COAX	-	2	-	-	1	-	-	-	-	-	C3e									
			TEF	3U09	⌀=18m	-	-	18m	COAX	-	2	-	-	-	-	-	-	-	-	C3a									
			TEF/VF	3L08	⌀=18m	-	-	18m	COAX	-	2	-	-	-	-	-	-	-	-	L08/U09 COMBINERS	C3b								
			TEF	3G09	⌀=18m	-	-	18m	COAX	-	2	-	-	-	-	-	-	-	-	-	C3c	AMPHENOL 5963200	300°	27.8m	25.8m	26.8m	POLE MOUNT	NEW	-

ANTENNA REFERENCE KEY		FUNCTION KEY		STATUS KEY		OPERATOR KEY		FEEDER LENGTH & DIAMETER GUIDANCE NOTES	
A =	ANTENNA GROUP (A-Z)	1 =	SECTOR (2,3 etc)	NEW =	NEW ONTO SITE	VF =	VODAFONE	TOTAL DISTANCE MEASURED FROM MHA TO BTS CABINET. NOTE: FOR STREET POLES THE TOTAL IS TO INCLUDE THE <u>2</u> FEEDER (TEF) & <u>1</u> FEEDER (VFU21) PRE-RIGGED IN THE POLE. IF FEEDER DIAMETER VARIES THE LENGTHS ARE TO BE ITEMISED SEQUENTIALLY IN THE COLUMNS FROM THE ANTENNA MHA TO THE BTS AS FOLLOWS: MAIN FEEDER, MAIN FEEDER JUMPER 1, MAIN FEEDER JUMPER 2. TOTAL LENGTH	
1 =	CELL No. (1, 2, 3)	U =	UMTS (G=GSMT) (L=LTE)	EXISTING =	ON SITE AND NOT BEING MOVED	TEF =	TELEFONICA		
b =	UNIQUE BAND REFERENCE	21 =	2100 BAND (09=0900,18=1800)	RE-USE =	ON SITE BUT BEING MOVED				
DISH				REMOVE =	REMOVED FROM SITE				
	Dish (1-13)								

[illegible]

EQUIPMENT						
	OPERATOR	MANUFACTURER	TYPE	SIZE (WxDxH)	COLOUR	COMMENTS
PROPOSED	TEF	NSN	3No. FLEXI RACKS	0.60X0.60x1.85m	GREY	ON STEEL GRILLAGE
PROPOSED	VF	ERICSSON	2No. RBS6102	1.30x0.70x1.45m	GREY	ON STEEL GRILLAGE
PROPOSED	VF/TEF	ELTEK	PSU	0.79x0.77x2.00m	GREY	ON STEEL GRILLAGE

POWER SUPPLY/SOURCE						
OPERATOR	MANUFACTURER	TYPE	SIZE (WxDxH)	COLOUR	STATUS	COMMENTS
PROPOSED	VF/TEF	-	-	-	NEW	LL SUPPLY

TRANSMISSION ENCLOSURE						
EXISTING / PROPOSED	ENCLOSURE	TRANSMISSION SOLUTION MICROWAVE ONLY / FIBRE ONLY / MICROWAVE & FIBRE	U SPACE AVAILABLE	CURRENT TRANSMISSION KIT LOCATION	PROPOSED TRANSMISSION KIT LOCATION	COMMENTS
PROPOSED	ELTEK	VF/TEF MICROWAVE & FIBRE	14	—	X	—

DISH KEY						
STATUS	OPERATOR	DISH REF	DISH DIA	BEARING	HEIGHT TO CENTRE (AGL)	LINK No.
PROPOSED	TEF/VF	D1	300Ø	TBC	27.0m	TBC
PROPOSED	TEF/VF	D2	300Ø	TBC	27.0m	TBC

CONCESSIONS	CONFIRMATIONS ELECTRICAL SURVEY ASBESTOS REGISTER REQUIRED
N/A	

OPERATOR KEY		A=
VF=	VODAFONE	B= Antenna Group (proposed antenas)
TEF=	TELEFONICA	E= Antenna Group (existing antenas to be removed)
MORAN=	ALL PROPOSED MORAN EQUIPMENT. 4G ONLY FOR LONDON	1= Cell No. (1, 2, 3)
		a= Unique Band Reference

FUNCTION KEY	
1=	Sector (1, 2, 3 etc)
G=	GSM
U=	UMTS
L=	LTE
08=	800 Band
09=	900 Band
18=	1800 Band
21=	2100 Band
26=	2600 Band

[illegible]