

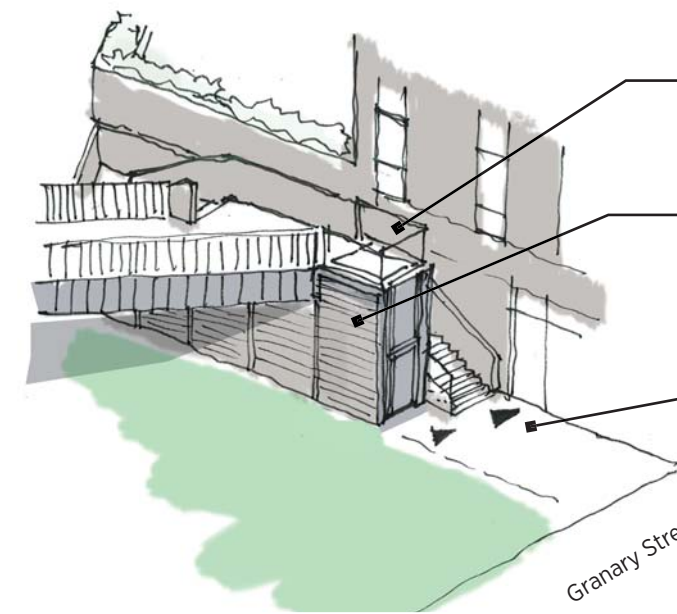
New footbridge



keeping lift entry and stairs visible from Granary Street
This is agreed principle with Camden design officer

CURRENT DESIGN

New footbridge



glass balustrade on upper level

integrated with brick finish

keeping lift entry and stairs visible from Granary Street

ALTERNATIVE



CURRENT DESIGN

Metal clad tall tower style platform lift



ALTERNATIVE

glass balustrade on upper level instead of solid tower