

CLIENT:

The Co-operative Food

PROJECT TITLE:

The Co-operative Food - Camden, Parkway

REVISION HISTORY:

REV	R1	R2	R3	R4	R5	R6	R7
DATE	06.03.14	02.06.14	05.06.14	10.07.14	21.08.14	29.09.14	02.10.14
INITIALS	SB	SB	SB	SB	SB	SB	SB

colours shown are purely representative, please match to colour references only !

NOTE: All dimensions are in millimetres u.s.o. and are approximate only.

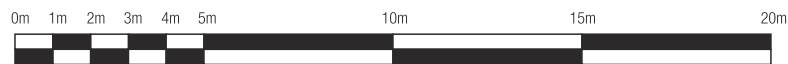
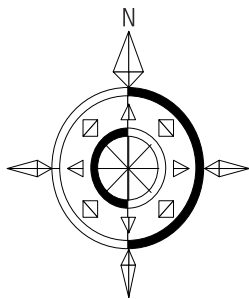
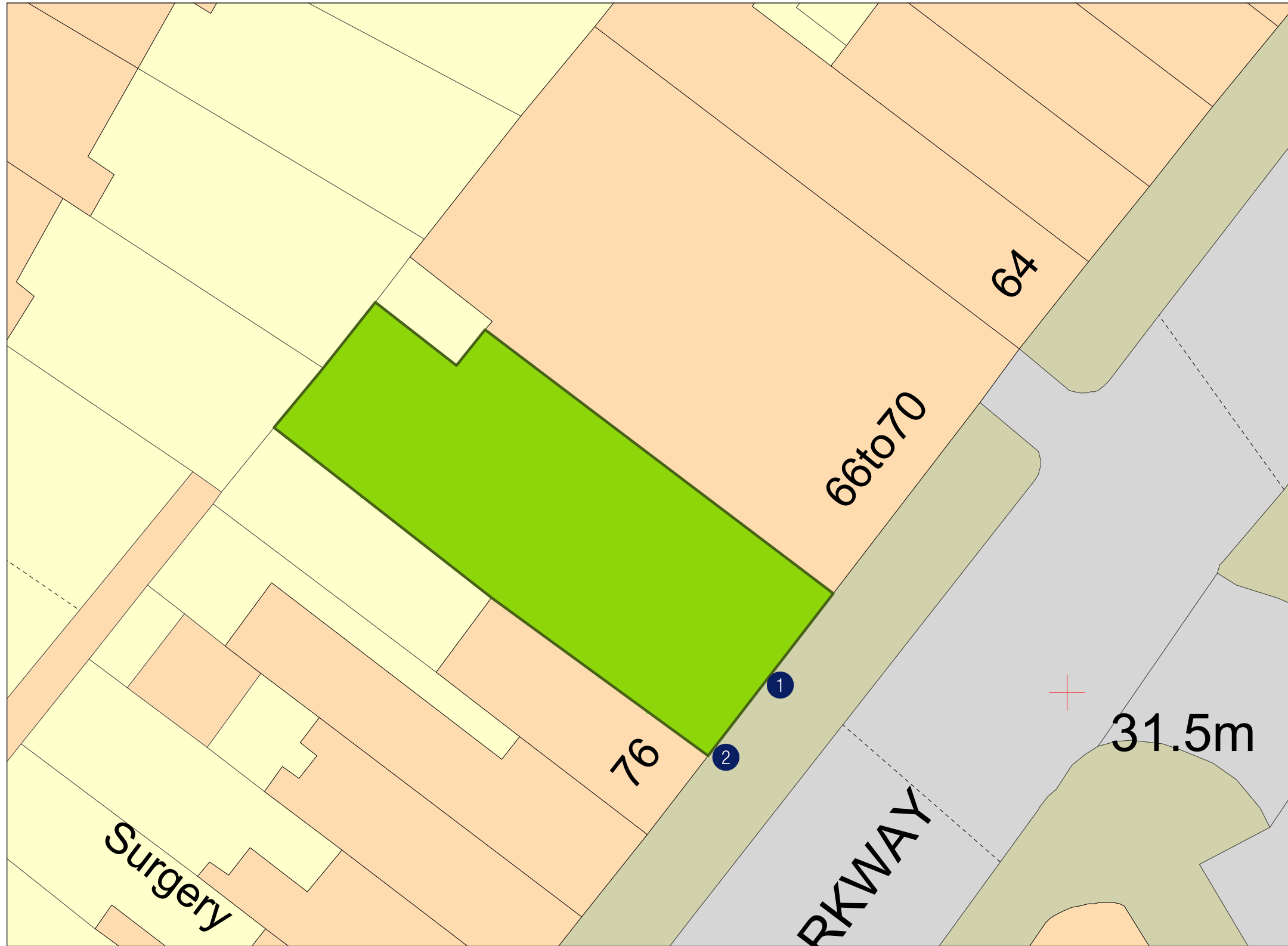


Sandfield Close
Moulton Park
Northampton
United Kingdom
NN3 6EU

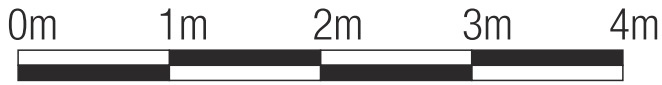
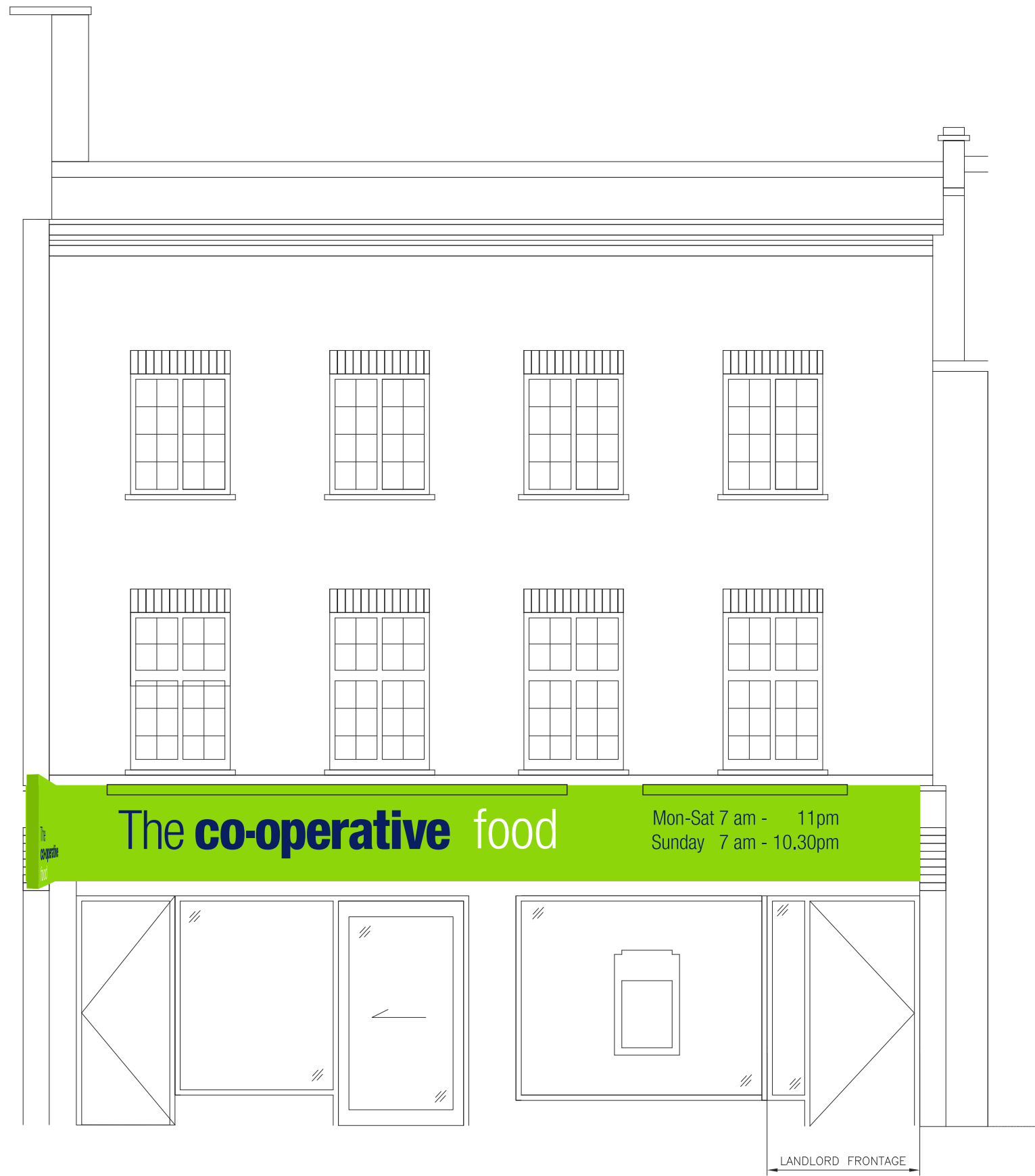
Tel: +44 (0)1604 790000
Fax: +44 (0)1604 790190
Email: info@hawes.co.uk
Web: www.hawes.co.uk



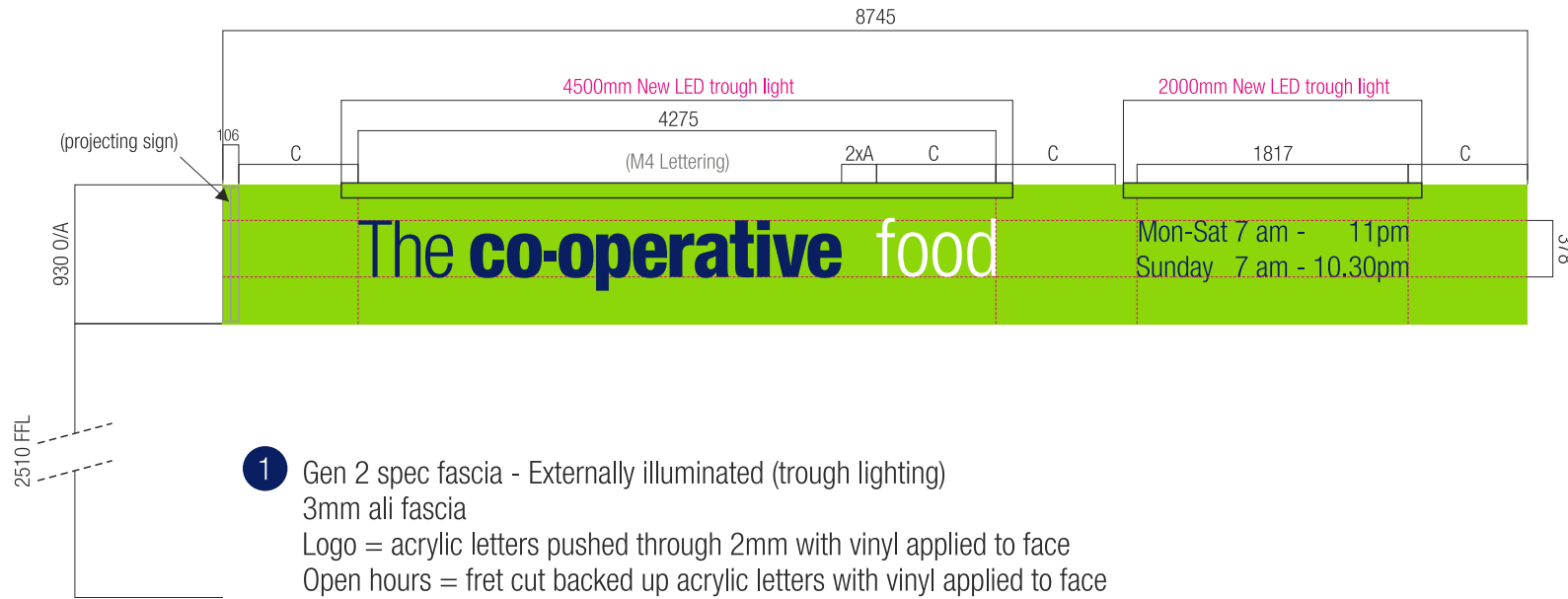
Site Plan



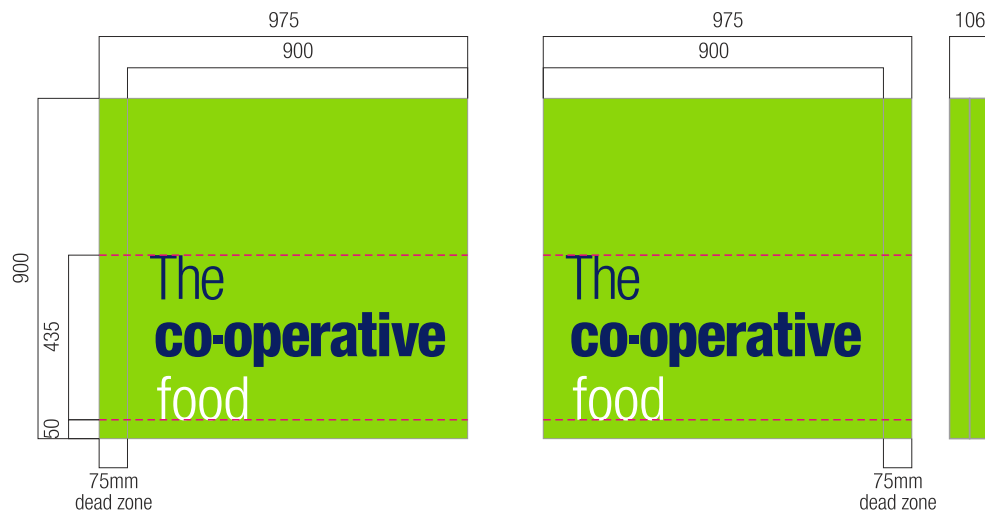
Elevations



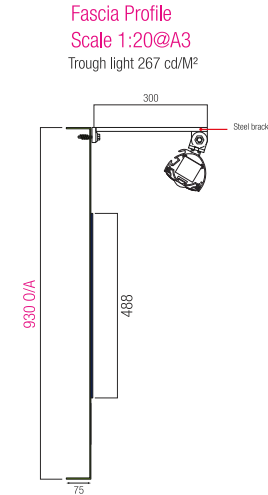
Proposed Signage



- 1 Gen 2 spec fascia - Externally illuminated (trough lighting)
 3mm ali fascia
 Logo = acrylic letters pushed through 2mm with vinyl applied to face
 Open hours = fret cut backed up acrylic letters with vinyl applied to face
 Scale 1:50 @ A3
 Part number: XXXxxxxx-xxxx
1 off



- 2 Gen 2 spec D/S projecting sign - Non-illuminated
 3mm ali
 Logo = acrylic letters pushed through 2mm with vinyl applied to face
 Scale 1:20 @ A3
 Part number: XXXxxxxx-xxxx
1 off



- PMS 375c
- Paint (as supplied by paramount)
- PMS 2757c
- PMS Process Black c
- PMS 1235 c