

# Camden Core Strategy 2010-2025

## Local Development Framework



If you would like this document in large print or Braille, or in another language, please contact 020 7974 5615

Find out more about this document and the LDF by visiting [camden.gov.uk/ldf](http://camden.gov.uk/ldf) or by calling the LDF hotline 020 7974 5615/2043.

Forward Planning  
London Borough of Camden  
Town Hall Extension  
Argyle Street  
London WC1H 8EQ

Published November 2010.

Camden's Local Development Framework. Core Strategy 2010.

## CS15. Protecting and improving our parks and open spaces and encouraging biodiversity

- 15.1 Camden has over 250 designated parks and open spaces and 36 sites of nature conservation importance. In addition many housing estates include green areas that play a role in meeting the open space needs of local people. Hampstead Heath is the largest open space in the borough, providing nearly half of our total area of open space and many of our outdoor sporting facilities. The openness and semi-rural feel of the Heath and its surrounding green areas is preserved through its designation as Metropolitan Open Land (MOL), broadly equivalent to the green belt.
- 15.2 The south of the borough is characterised by dense development with small enclosed spaces, many of which are preserved as London Squares. There are other small spaces scattered throughout the borough that provide various recreational and amenity opportunities. The most prominent open spaces near the centre of the borough are Regent's Park/Primrose Hill and the Regent's Canal. The Canal and railway sidings have an important role in nature conservation and provide habitat corridors (green chains) across Camden. Residents west of Finchley Road and in Central London have the lowest level of access to open space (not including land around housing estates), followed by Kentish Town, Somers Town and Gospel Oak.
- 15.3 Sites of nature conservation in Camden are generally small and undervalued, with pressure from adjoining sites and limited opportunities for expansion. However, green and brown roofs for both amenity and biodiversity value have been an increasing feature of new developments within Camden. Private gardens in Camden also provide a significant resource for biodiversity and amenity space.
- 15.4 Policy CS15 – *Protecting and improving our parks and open spaces and encouraging biodiversity* seeks to ensure that the growth in the number of residents and visitors to Camden, identified in policy CS1 – *Distribution of growth*, will be supported by increases and improvements in open space provision, including outdoor sport and recreation opportunities, and that development protects and makes provision for biodiversity.

### CS POLICY

## CS15 – Protecting and improving our parks and open spaces and encouraging biodiversity

The Council will protect and improve Camden's parks and open spaces. We will:

- a) protect open spaces designated in the open space schedule as shown on the Proposals Map, including our Metropolitan Open Land, and other suitable land of 400sqm or more on large estates with the potential to be used as open space;
- b) tackle deficiencies and under-provision and meet increased demand for open space by:
  - providing additional open space at King's Cross;
  - securing additional on-site public open space in the growth areas of Euston, West Hampstead Interchange, Holborn and Tottenham Court Road, and other parts of Central London. Where the provision of on-site public open space is not practical on a particular site in these areas, the Council will require a contribution to the provision of additional public open space on identified sites in the vicinity. If it can be demonstrated to the Council's satisfaction that no such suitable sites are available, we will require improvements to other open spaces in the area;
  - securing improvements to publicly accessible open land on the Council's housing estates; and
  - securing other opportunities for additional public open space.

## CS15 – Protecting and improving our parks and open spaces and encouraging biodiversity (*continued*)

c) secure from developments that create an additional demand for open space, where opportunities arise, improvements to open spaces, including to:

- the facilities provided, such as play and sports facilities;
- access arrangements; and
- the connections between spaces.

The Council will protect and improve sites of nature conservation and biodiversity, in particular habitats and biodiversity identified in the Camden and London Biodiversity Plans in the borough by:

- d) designating existing nature conservation sites;
- e) protecting other green areas with nature conservation value, including gardens, where possible;
- f) seeking to improve opportunities to experience nature, in particular in South and West Hampstead, Kentish Town and central London, where such opportunities are lacking;
- g) expecting the provision of new or enhanced habitat, where possible, including through biodiverse green or brown roofs and green walls;
- h) identifying habitat corridors and securing biodiversity improvements along gaps in habitat corridors;
- i) working with The Royal Parks, the London Wildlife Trust, friends of parks groups and local nature conservation groups to protect and improve open spaces and nature conservation in Camden;
- j) protecting trees and promoting the provision of new trees and vegetation, including additional street trees.

The Council will preserve and enhance the historic, open space and nature conservation importance of Hampstead Heath and its surrounding area by:

- k) working with the City of London, English Heritage and Natural England to manage and improve the Heath and its surrounding areas;
- l) protecting the Metropolitan Open Land, public and private open space and the nature conservation designations of sites;
- m) seeking to extend the public open space when possible and appropriate;
- n) taking into account the impact on the Heath when considering relevant planning applications;
- o) protecting views from Hampstead Heath and views across the Heath and its surrounding area;
- p) improving the biodiversity of, and habitats in, Hampstead Heath and its surrounding area, where opportunities arise.

The Council will preserve and enhance the Regent's Canal by:

- q) balancing the differing demands on the Canal, its towpath and adjoining land;
- r) implementing opportunities to make the Canal a safer place;
- s) applying the guidance in the Regent's Canal Conservation Area Management Strategy;
- t) implementing opportunities to provide additional nature conservation areas and improve the role of the Canal and its adjoining land as a habitat corridor (green chain);
- u) working with British Waterways, Natural England, other land owners/developers, users and the local community to improve the Canal and towpath.

## Camden's open spaces

### Protecting our open spaces

- 15.5 Camden's parks and open spaces are important to the borough in terms of health, sport, recreation and play, the economy, culture, biodiversity, providing a pleasant outlook and providing breaks in the built up area. They also help to reduce flood risk by retaining rain water and some are used for growing food. Camden's growth will increase the demand for our open spaces so it is important that we protect our existing parks and open spaces.
- 15.6 The Council will protect the open spaces designated in the open space schedule shown on the Proposals Map, as well as other suitable land with the potential to be used as open space. Camden has many large housing estates with land originally designed for use as open space, but has never been formally designated as such. The Council will continue to retain suitable land, not formally designated as open space for the use as open space on large estates, whilst providing the flexibility for various land uses to be re-configured across the estate, in conjunction with the re-provision of land for open space use. We will not allow development on these open spaces unless it is for limited development ancillary to a use taking place on the land and for which there is a demonstrable need. Extensions and alterations to existing buildings on open space should be proportionate to the size, including the volume, of the original building. We will only allow development on sites adjacent to an open space that respects the size, form and use of that open space and does not cause harm to its wholeness, appearance or setting, or harm public enjoyment of the space. We will take into account the cumulative impact of developments where appropriate. The poor quality of an open space will generally not be accepted as a reason for its partial development to fund improvements as, once built on, open space is lost to the community for ever.

### Metropolitan Open Land

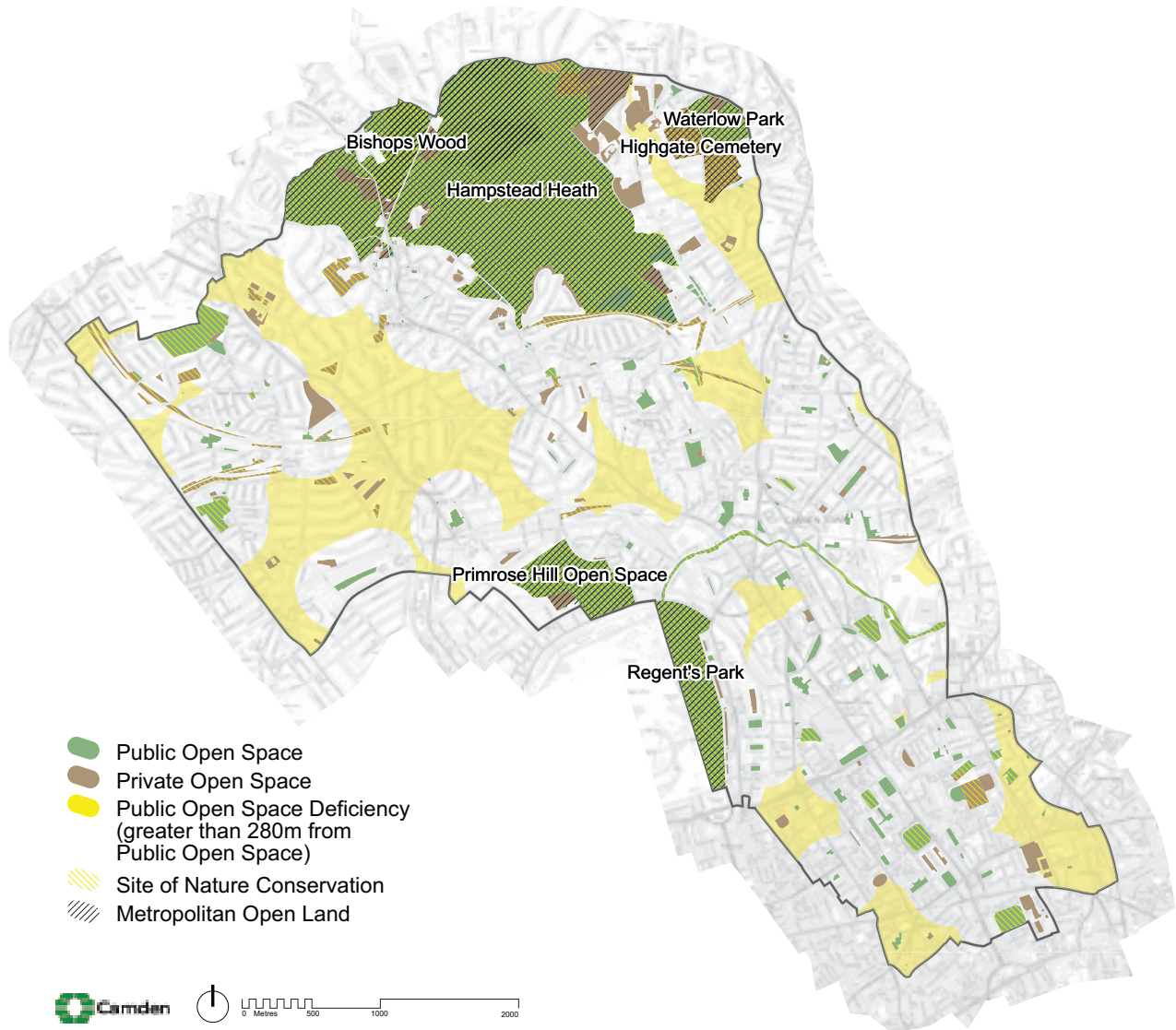
- 15.7 Camden's designated open spaces include Metropolitan Open Land. This is open space of London-wide significance that provides a break in the built up area and receives the same presumption against development as green belt land. There are four main areas of Metropolitan Open Land in Camden, which are of great importance to the borough and its character – Hampstead Heath and adjoining areas; Regent's Park; Primrose Hill/Barrow Hill Reservoir; and Highgate Cemetery/Waterlow Park/Fairseat. These will be protected in accordance with London Plan policy 3D.10. Guidance on Metropolitan Open Land and extensions to existing buildings within it is set out in government Planning Policy Guidance (PPG) 2 – Green Belts.

### Tackling open space deficiency and securing additional and improved spaces

- 15.8 Camden's Open Space, Sport and Recreation Study 2004 and the needs assessment in Camden's Open Space Strategy demonstrated that nowhere in Camden had a surplus in open space. The Camden Open Space, Sport and Recreation Study Update 2008 found that there is currently 20sqm of public open space per person in the borough. This would drop to 17sqm by 2026 taking into account projected population increases and assuming no additional public open space is provided. The Study Update 2008 suggests standards for open space and highlights opportunities for improving the quantity and quality of open spaces in the borough, including play facilities and sports provision. These standards form the basis of our detailed policy on open space, sport and recreation in our Camden Development Policies Local Development Framework document (policy DP31 – *Provision of, and improvements to, open space and outdoor sport and recreation facilities*).
- 15.9 Most of Camden's population has reasonable access to a metropolitan or district park (that is Hampstead Heath or Regent's Park and Primrose Hill) but a large proportion of residents do not have reasonable access to local and small parks and open spaces. Camden's Annual Monitoring Report and the Camden Open Space, Sport and Recreation Study Update 2008 show that only a small amount of new public open space has been provided in the borough and therefore in many areas, including South and West Hampstead, Gospel Oak and Kentish Town and parts of central London, there is still poor access to small and local parks and open spaces. These areas are therefore considered to be deficient in public open space (see map 7). Areas deficient in public open space are defined as those without access to a public open space within 280m. The Camden Open Space, Sport and Recreation Study Update 2008 also identified areas where there is 'under-provision' of public open space. Although these areas do have access to open space, this is not adequate to

meet the level of local need due to the number of children, dwelling density, and social disadvantage in the area. These areas are identified in figure 4.4 (Composite Need) in Camden’s Open Space, Sport and Recreation Study Update 2008.

### Map 7: Open Space



This map is based on Ordnance Survey Material with the permission of Ordnance Survey on behalf of the Controller of Her Majesty's Stationery Office ©. Unauthorised reproduction infringes Crown copyright and may lead to prosecution or civil proceedings. Licence number LA100019726, year 2010.

15.10 To tackle deficiencies and under-provision of public open space and to ensure adequate new open space is provided in Camden’s growth areas, we will secure additional on-site open space on all appropriately sized and located sites. The Council wants to promote a green network approach to open space, where open spaces are connected by landscaped corridors or habitat corridors. We recognise that the built-up nature of Camden makes it difficult to provide new open space. However, the deficiency areas of West Hampstead, Camden Town and western Central London are near significant development sites that may have the potential to accommodate new public open spaces. The under-provided areas of South Hampstead, Camden Town and Somers Town are also near potential development sites that may be large enough to accommodate new public open space. The growth areas of King’s Cross, Euston, and West Hampstead Interchange contain development sites that have potential to provide on-site open space. For example, two open spaces plus smaller play spaces and sports facilities will be provided as part of the redevelopment of King’s Cross, providing much-needed facilities on the edge of central London and near Somers Town. We will use Camden’s Site Allocations document to promote areas and development sites where the Council will expect new public open space to be incorporated within development proposals.

- 15.11 Where the opportunity arises in Kentish Town or Gospel Oak and other areas that suffer from deficiency or under-provision, the Council will expect the provision of on-site public open space. These areas contain large housing estates which could also provide new public open space as part of any estate regeneration programme. The Council has identified opportunities to improve open land around Alexandra and Ainsworth estate and surrounding sites on Abbey and Belsize Roads, with other open space improvements anticipated at Maiden Lane estate. Further open space improvements on housing sites can be identified as the Council's estate regeneration programme is extended.
- 15.12 The existing built up nature of large potential development sites in the growth areas of Holborn and Tottenham Court Road may make it difficult to secure a significant amount of new public open space at these locations. However, the Council will expect the provision of some public open space on suitable sites to remedy the recognised deficiency.
- 15.13 Where on-site provision of public open space is not possible, the Council will continue to seek other forms of open space provision. These may include the provision of open space off-site, or the payment of a financial contribution towards obtaining land for open space use, improving the quality of existing open spaces or improving access to them. When considering which open space to improve as a result of contributions, the Council will consider nearby deficiencies and under-provision in open space and existing plans for the management of open space. We will also take into account exercise rates and obesity levels in the surrounding area, a priority issue for the Camden Public Health Partnership. Our Camden Development Policies Local Development Framework document (policy DP31 – *Provision of, and improvements to, open space and outdoor sport and recreation facilities*) sets out our detailed approach towards the provision of open space.
- 15.14 The Council will continue to seek to secure public use of open spaces on appropriate sites wherever practical, for example by putting in place suitable public access arrangements or purchasing land. Potential sites include land around housing estates and large private spaces, such as those adjoining Hampstead Heath.

### Play facilities

- 15.15 Camden has numerous play facilities within open spaces and on housing estates. We will retain these, where appropriate, and seek to provide additional formal and informal play spaces in areas of deficiency or under provision in open space. The Council is providing and enhancing 28 play facilities as part of its Play Pathfinder project, including a new adventure playground at Kilburn Grange. This will significantly improve access for children and young people, particularly 8-13 year olds. Additional funding is also being provided by the NHS Camden. At least three play facilities for a range of ages will also be provided at King's Cross. Where additional demand for play space is created by development we will expect the provision of play space on the site, broadly in accordance with the Mayor's SPG on Providing for children and young peoples' play and informal recreation. See policy DP31 – *Provision of, and improvements to public open space and outdoor sport and recreation facilities* in Camden Development Policies for further details on the provision of play space expected. The Council's approach to play is set out in its Play Strategy 2007-2012.



### Sports facilities

15.16 Camden also contains several full-sized pitches for various sports located on Hampstead Heath and Regent's Park. As the Council does not own these, they are not within our control to retain, maintain or alter to meet the changing needs of the borough. Given the built up nature of Camden, it is unlikely that new full size pitches will be provided. However, we will continue to seek to protect existing outdoor sport facilities by working with the City of London and the Royal Parks, and we will encourage the improvement of existing facilities. We will also seek to retain privately owned playing pitches. The Council owns several tennis courts in Waterlow Park and multi-games areas and smaller pitches on housing estates, in schools and on open spaces, which we will continue to maintain. New facilities have been secured at King's Cross and our Camden Site Allocations document will identify sites where outdoor sports or related facilities may be expected as part of any open space proposals. The Council's approach to sport is set out in its ProActive Sport & Physical Activity Strategy 2008-2012. For details on our approach to indoor sports facilities see CS10 – *Supporting community facilities and services*.

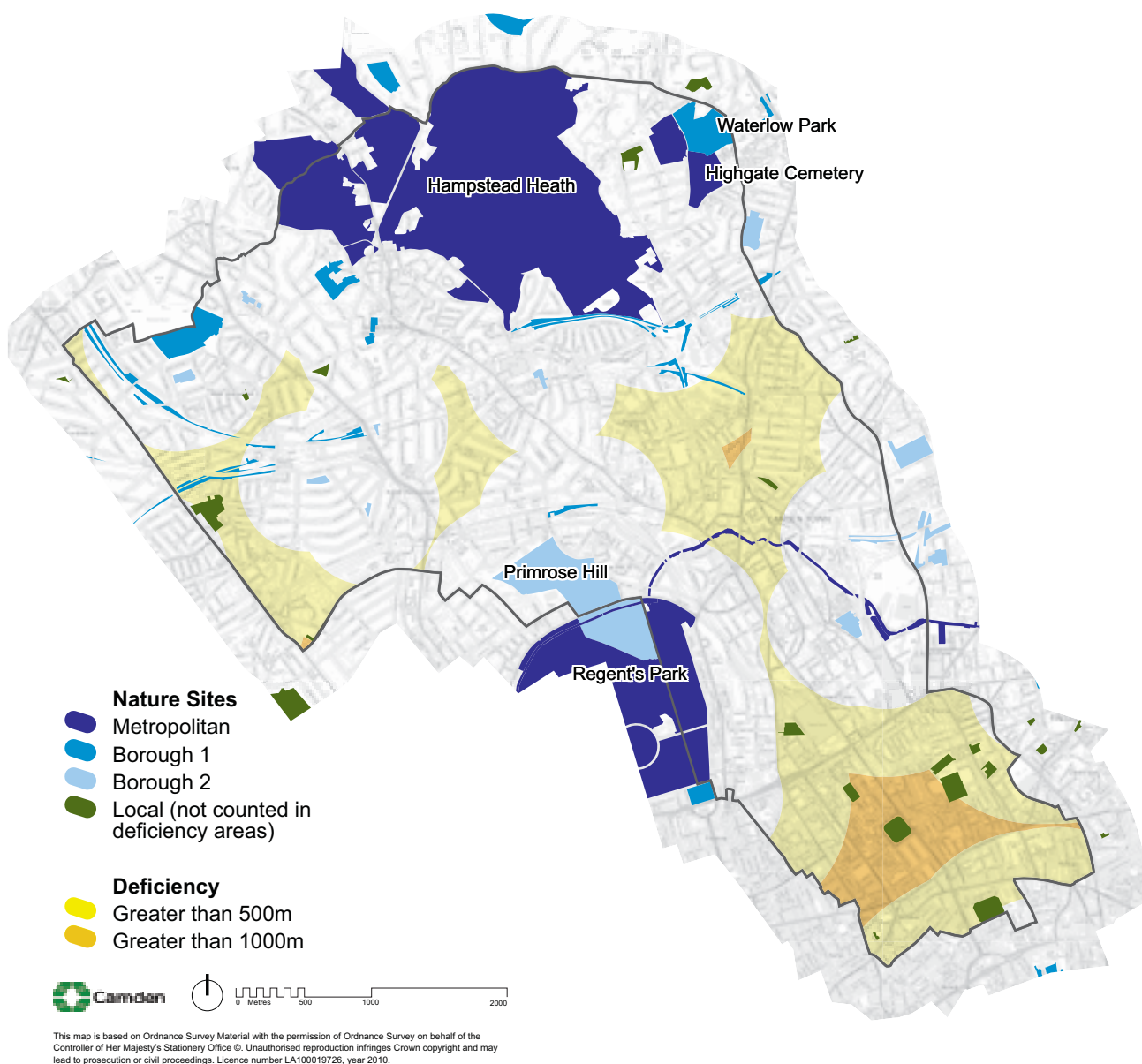
### Nature conservation

15.17 Green spaces play a vital role in nature conservation and provision for biodiversity. Camden is fortunate to have Camley Street Nature Park, Kentish Town City Farm and several local nature reserves, which provide educational tools and health benefits for residents. The Council will continue to protect all sites in the borough formally identified as being of nature conservation value (see Map 8). Where possible we will also protect an amount of green space or garden space on a site that reflects the local built form and landscape character. The Council and statutory undertakers, who own some of the designated sites, have a duty to have regard to conserving biodiversity. However, most Sites of Nature Conservation Importance in Camden are not in the Council's control and therefore it is difficult to protect species, habitats and foraging areas other than those formally protected by international and national legislation. To protect our existing sites, we will resist the development of designated sites where the nature conservation value has been diminished or lost, especially where this loss is due to neglect or damage, and we will seek the reinstatement, or an equivalent level, of biodiversity on the site. The Council will be particularly keen to protect habitats and species identified in Camden's Biodiversity Action Plan.





## Map 8: Locations Deficient in Access to Nature Conservation Areas



- 15.18 Residents and visitors further than 1km away from a metropolitan or borough Site of Nature Conservation Importance are considered to have poor access to the natural environment. These areas are shown on Map 8. Where opportunities exist in these areas we will explore ways to support biodiversity and nature conservation. We will use the Camden Site Allocations document to identify sites where enhanced or new measures to support biodiversity and nature conservation may be expected as part of any new proposals and new open spaces. Even where no additional open space is being created we will seek other forms of biodiversity such as biodiverse landscaping, habitat creation, green or brown roofs and, where appropriate, green walls. Camden's Biodiversity Action Plan identifies habitats and species that are particularly important in Camden. Our Camden Planning Guidance supplementary document will provide further information on the Council's expectations for improvements in nature conservation.
- 15.19 Developers and landowners should also give consideration to the need for species to move between different types of habitats which will help these species to cope with the effects of climate change. We will continue to retain habitat corridors in the borough, identify 'missing links' in these corridors and seek to secure habitat corridors as part of developments and through street improvements. Habitat corridors and missing links are identified on the Proposals Map. Areas that could provide habitat corridors or contribute to nature conservation include land adjacent to railway lines, where existing vegetation can be enhanced or new vegetation provided, and sites adjoining

existing open spaces. Opportunities for further links include around West Hampstead railway lands and from Kentish Town to Hampstead Heath (as shown on the Proposals Map).

- 15.20 There are limited opportunities to provide new ground-level habitats in the borough due to lack of space. Whilst the provision of habitat at ground level is important, there are opportunities on new and existing buildings to provide habitats in the form of green or brown roofs and green walls. We will expect developments to provide opportunities for biodiversity within the fabric and curtilage of buildings. Where redevelopment occurs on sites adjacent to existing wildlife sites we will expect developers to provide additional habitat of an appropriate scale. We will favour the provision of habitat for species identified in the Camden and London Biodiversity Action Plans. Where we secure additional land for nature conservation we will work with local nature conservation groups and social and corporate volunteers that help protect and enhance these new spaces in addition to the Council's existing Local Nature Reserves. Please see the Council's Camden Planning Guidance supplementary document for information on ways to improve biodiversity and on our areas of nature conservation deficiency.

### **Trees**

- 15.21 Trees are important for their aesthetic value, as habitat, in shading, cooling and filtering the air and in removing carbon dioxide and providing oxygen. They will play an increasingly important role in providing shade and refuge in the hotter summers predicted due to climate change. More guidance on trees and groups of trees can be found in Camden Development Policies and our Camden Planning Guidance supplementary document. There is often pressure for the removal of trees and groups of trees in the borough due to subsidence fears, perceived dangers, locations close to existing underground infrastructure and to facilitate development.
- 15.22 The Council has a Tree Strategy which deals with tree management on its land. This aims to retain trees and provide new trees on Council land. We have a tree planting programme which is increasing the number of trees in the borough, in streets, parks housing estates and schools. We will resist the loss of trees and groups of trees wherever possible and, where this is not possible, require their replacement on development sites or nearby streets and open spaces. The choice of species should consider historic context, availability of space, soil conditions, potential improvements to air and soil quality and reducing the effects of and adapting to climate change. Further information on protected trees and groups of trees, the procedures for seeking their removal and their replacement is set out in the Council's Camden Planning Guidance supplementary document.





### Hampstead Heath

- 15.23 Hampstead Heath has been a valuable recreational resource for Londoners since the mid-17th century and is Camden's largest open space. The City of London, who own and manage the Heath, has developed a management plan in consultation with the local interest groups and the wider community. We will work with the City, English Heritage and Natural England on preparing and implementing plans for the Heath.
- 15.24 The Heath and some of its surrounding areas are designated Metropolitan Open Land (see para 15.7 above). It is also important for its ecology being a Metropolitan Site of Nature Conservation, a Site of Special Scientific Interest and containing two areas of Ancient Woodland. There are also numerous large private gardens adjacent to the Heath that are designated open space.
- 15.25 We will continue to use the guidance in the conservation area statements, appraisals and management strategies for Dartmouth Park and Mansfield, Hampstead, Highgate Village, Redington and Frognal and South Hill Park to preserve and enhance the built environment around the Heath and preserve outlooks and views from it. Many views to and from the Heath are protected, for example the views from Kenwood House and Parliament Hill to St Paul's and from Parliament Hill to the Palace of Westminster (see policy CS14).

### The Regent's Canal

- 15.26 The Regent's Canal, Camden's only significant open watercourse, winds through the borough from Regents Park through Camden Town and King's Cross, and is undergoing significant regeneration. It serves several purposes, from its open space, leisure and recreational functions and biodiversity importance to its historic significance and commercial and transport role. The Canal forms part of London's Blue Ribbon Network, which has its own set of policies within the London Plan. The Canal is an important historical feature and it is important that development near the Canal reflects its unique character. The Council will therefore take into account the Regent's Canal Conservation Area Appraisal and Management Strategy when assessing applications for sites along and adjacent to the Canal.
- 15.27 The Council has been working with the Metropolitan Police and British Waterways to improve security along the Canal. Its separation from streets and buildings is an important element of the Canal's character but this also makes it susceptible to crime and anti-social behaviour. Any development along the Canal needs to address these challenges.
- 15.28 The Canal is a main east-west pedestrian and cycle route through the borough linking Regents Park, Camden Town and King's Cross. Its role as a connecting route will increase as more activities locate in King's Cross. The Council will seek to improve conditions for users where possible and, where developments are proposed, will investigate opportunities to provide additional access to the Canal.
- 15.29 The Canal is also an important ecological corridor and is designated as a site of metropolitan importance for nature conservation. Camley Street Nature Reserve is located along the Canal and the section at Albert Road near London Zoo is especially important, particularly for foraging bats as an unlit green space at night. The Council will therefore prevent the loss and degradation of habitat including from overshadowing and lighting in especially sensitive areas. We will also work



with British Waterways to improve biodiversity within and along the Canal and with developers to improve biodiversity through planting, provision of green or brown roofs and green walls. The redevelopment of Hawley Wharf provides an opportunity to improve the nature conservation and open space functions of the Canal.

- 15.30 The part of the Canal that runs through Camden is mainly used for leisure boating rather than transportation of goods and waste. A flexible approach to canal-side development that provides for the delivery and removal of material from both the road and canalside will be encouraged to enable future use of the Canal for transportation of goods and materials. The use of the Canal for any energy saving or generation measures and as a water store will be welcomed subject to schemes not harming the Canal's special qualities.

#### Key evidence and references

- Camden Open Space, Sport and Recreation Study; KKP; 2004
- Camden Open Space, Sport and Recreation Study Review; Atkins; 2008
- Open Space Strategy for Camden 2006-2011
- Draft Camden Biodiversity Action Plan 2009
- Strategy for managing, maintaining and replacing Council owned trees 2007-2011
- Camden Sustainability Task Force Report on Food, Water, Biodiversity and Open Space; 2008
- The London Plan (consolidated with Alterations since 2004); Mayor of London; 2008
- Connecting with London's nature: The Mayor's Biodiversity Strategy; 2002
- Planning Policy Statement (PPS) 9: Biodiversity and Geologic Conservation; 2005
- Planning Policy Guidance (PPG) 17: Planning for open space, sport and recreation; 2004
- Bringing your rivers back to life. A strategy for restoring rivers in North London; Environment Agency; 2006
- Hampstead Heath Management Plan Part 1. Towards a Plan for the Heath 2007-2017; City of London & Land Use consultants; 2007
- The Regent's Canal Conservation Area Appraisal and Management Strategy
- Inland Waterways. Unlocking the Potential and Securing the Future of Inland Waterways through the Planning System; TCPA; 2009
- Under Lock and Quay. Reducing criminal opportunity by design; British Waterways and the Metropolitan Police; 2000

# Camden Development Policies 2010-2025

## Local Development Framework



**If you would like this document in large print  
or Braille, or in another language, please  
contact 020 7974 5615**

Find out more about this document and the LDF by visiting [camden.gov.uk/ldf](http://camden.gov.uk/ldf)  
or by calling the LDF hotline 020 7974 5615/2043.

Forward Planning  
London Borough of Camden  
Town Hall Extension  
Argyle Street  
London WC1H 8EQ

Published November 2010.

Camden's Local Development Framework. Development Policies.

## DP17. Walking, cycling and public transport

- 17.1 The provision of sustainable travel options is essential in order to reduce the environmental impact of travel, to support future growth, to relieve pressure on Camden’s existing transport network, and to provide alternatives to the private car. Core Strategy policy CS11 sets out at a strategic level how the Council will promote sustainable transport modes. Policy DP17 sets out in more detail the Council’s requirements for new development in terms of provision for walking, cycling and public transport, in conjunction with CS11 and policies DP16 and DP18 – DP21.

### DP POLICY

#### DP17 – Walking, cycling and public transport

The Council will promote walking, cycling and public transport use. Development should make suitable provision for pedestrians, cyclists and public transport and, where appropriate, will also be required to provide for interchanging between different modes of transport. Provision may include:

- a) convenient, safe and well-signalled routes including footways and cycleways designed to appropriate widths;
- b) other features associated with pedestrian and cycling access to the development, where needed, for example seating for pedestrians, signage, high quality cycle parking, workplace showers and lockers;
- c) safe road crossings where needed;
- d) bus stops, shelters, passenger seating and waiting areas, signage and timetable information.

The Council will resist development that would be dependent on travel by private motor vehicles.

The Council will seek to secure travel interchange facilities in locations that maximise travel benefits and minimise environmental harm. Passenger transport interchanges should provide for the co-ordination of arrival and departure timetabling on different services as far as possible. Interchanges catering for longer distance journeys should include toilets, baby changing facilities and facilities to provide refreshment for travellers.

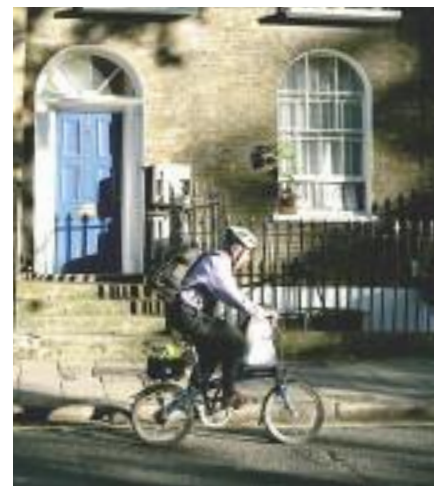
- 17.2 Accessibility in Camden is generally good, with the majority of the borough already served by frequent public transport services through London Underground, London Overground, rail and bus links. There are few areas in the borough where development would have relatively limited accessibility to public transport (for example at the fringes of Hampstead Heath). In such areas, private cars may be the only practical option for some journeys. However, it is possible throughout Camden to provide for some journeys to be made in more sustainable ways. Developments will be dependent on travel by private motor vehicles if they are designed without a safe means of access to footways, nearby bus-stops, and a road or other route appropriate for cyclists. These will therefore be minimum requirements for all development.
- 17.3 The design of a development and the way it relates to transport networks will be major factors influencing the transport choices of future occupiers and visitors. To encourage people to make sustainable transport choices, the options available will need to form a continuous network of convenient and pleasant routes that make people feel safe, link to all parts of the borough, are easy to use by people with mobility difficulties, and be integrated by facilities to make it easy to change between one form of transport and another.

## Footpaths and cycle routes

- 17.4 The Council will expect new developments to provide appropriate, safe pedestrian and cycle links as part of schemes in order to promote sustainable travel and enhance accessibility, including for vulnerable users. The provision of pedestrian and cycle links also helps to promote more active, healthy lifestyles. In order to maintain pedestrian and cyclist safety, links should be designed to prevent conflict between motor vehicles, cyclists and pedestrians. Footpaths need to be wide enough for the number of people who will use them so they do not spill onto roads. They should also include features to assist vulnerable road users, including the provision of dropped kerbs and textured paving where appropriate.
- 17.5 Safe facilities for cyclists, either fully segregated or on the road, offer the best prospect for reducing the level of cycling on pavements. Measures for walking and cycling will often need to extend beyond the site if development will increase flows nearby, for example, footway widening, new pedestrian crossing facilities, and improved sightlines for cyclists. Our Camden Planning Guidance supplementary document and Streetscape Design Manual include guidance on designing spaces for pedestrians and cyclists. Where appropriate, developments will be expected to contribute towards the walking and cycling initiatives set out in Core Strategy policy CS11.
- 17.6 We will seek shared surfaces in appropriate circumstances, and where it will be safe for all users, for example at locations with high levels of pedestrian activity and where traffic speeds and volumes are low. Shared surfaces are unlikely to be appropriate on through-routes for cyclists.
- 17.7 Transport for London's *Walking Plan (2004)* and *Improving Walkability (2005)* good practice guidance documents set out strategic guidance and objectives to improve the pedestrian environment and encourage walking in the capital.

## Other features for pedestrians and cyclists

- 17.8 The availability of routes alone is not sufficient to provide access to a development for pedestrians and cyclists, and many developments will need to make other provisions.
- 17.9 The nature and quality of features for pedestrians and cyclists is also highly important in order to create pleasant public spaces that are accessible to all, including people with mobility difficulties. Developments should provide features for pedestrians and cyclists that contribute towards the Council's objectives for promoting walking and cycling (see Core Strategy policy CS11 – *Promoting sustainable and efficient travel*), and to the creation of high quality public spaces, as required in Core Strategy policy CS14 – *Promoting high quality places and conserving our heritage* (see also policy DP21 – *Development connecting to the highway network* below).
- 17.10 At origins and destinations, cyclists will need storage for bicycles, equipment and protective clothing, and will often need to shower. High quality cycle parking is required in accordance with policy DP18 – *Parking standards and limiting the availability of car parking* and guidance in our Camden Planning Guidance supplementary document.
- 17.11 Contributions towards wider cycle initiatives may also be sought from new developments. See Core Strategy Policy CS11 for further information on cycle hire and cycle stations, which are integral elements of the Council's approach to promoting cycling.







## Buses

- 17.12 In most developments, measures to enable use of buses will focus on provision of information within the development, improving the route to a stop, and enhancing bus-stop facilities: possible measures include signing the route, seating and shelters. There may be occasions when there is no spare capacity on existing bus services, and to enable a development to benefit from public transport services, a financial contribution to increase capacity would be necessary (for example, additional bus lane provision, or priority for buses at traffic lights). It may sometimes be necessary to pool contributions, particularly where there are cumulative impacts from nearby developments and an increase in capacity is needed.

## Provision for interchange between transport modes

- 17.13 Most journeys involve changing between one form of travel and another and developments will sometimes need to cater for this. The creation of convenient and pleasant interchanges will encourage people to use alternatives to the car. A number of existing interchange points in the borough are likely to be developed in conjunction with the borough's growth areas (see Camden Core Strategy policy CS2) and with programmed transport investment. Interchanges around which additional development is expected to come forward include Euston Station, Tottenham Court Road Station, West Hampstead and Camden Town Underground Station.
- 17.14 Where development is proposed at an interchange between public transport services, the Council will expect the inclusion of facilities to make interchange easy and convenient for all users, and maintain passenger comfort. In line with Camden Core Strategy policies CS14 – *Promoting high quality places and conserving our heritage* and CS17 – *Making Camden a safer place*, works affecting interchanges should seek to provide high quality spaces that are safe for all users, and encourage people to use public transport and walk and cycle to destinations.

### Key evidence and references

- Draft Camden Green Transport Strategy 2008 – 2012
- Camden Walking Plan Second Edition 2006
- Camden Cycling Plan: fourth annual review (2008)
- Camden Local Implementation Plan (LIP) 2005/06 – 2010/11
- Camden Interim Parking and Enforcement Plan 2005/11
- Camden Road Network Management Plan
- Camden Streetscape Design Manual 2005
- The London Plan (consolidated with Alterations since 2004); Mayor of London; 2008
- Planning Policy Guidance (PPG) 13: Transport; ODPM; 2001