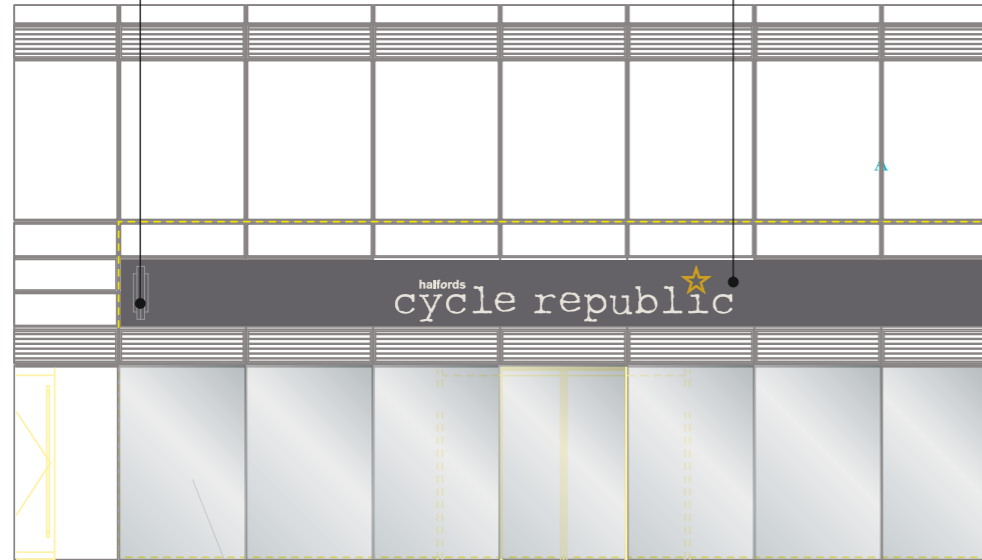


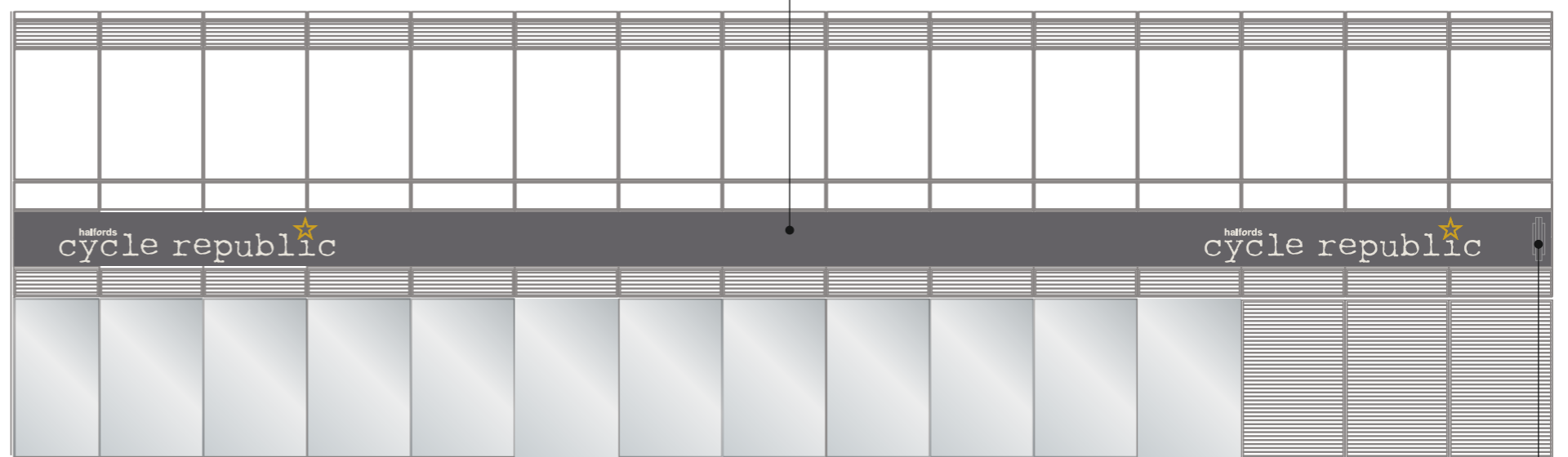
double sided non illuminated
projection sign 1050 x 700 x 50mm
*manufacture size tbc on survey

non illuminated aluminium panel 11400 x 860mm
*manufacture size tbc on survey
finished into grey with white & yellow vinyl graphics applied to face

non illuminated aluminium panel 24000 x 800mm
*manufacture size tbc on survey
finished into grey with white & yellow vinyl graphics applied to face



west elevation - scale 1:100

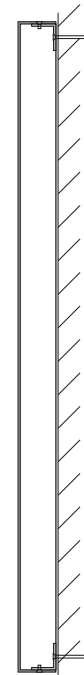


south elevation - scale 1:100

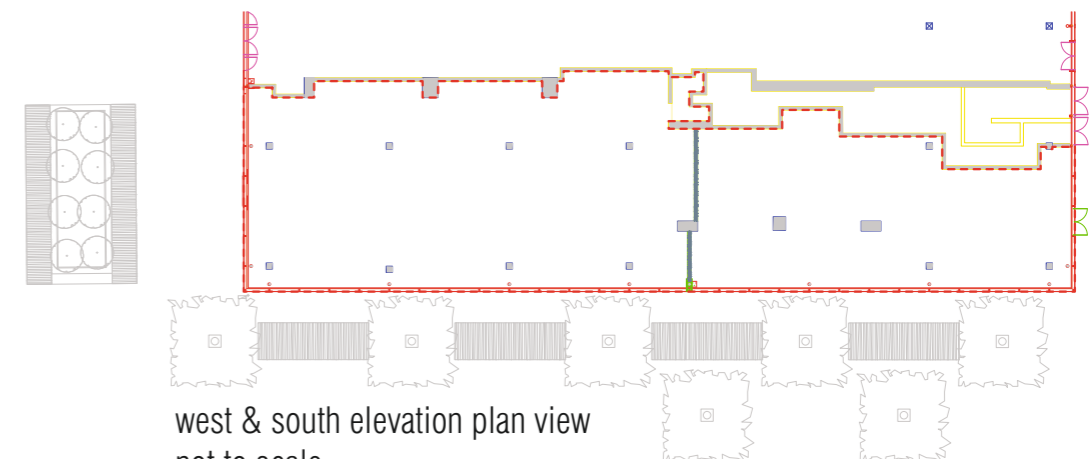


2No double sided non illuminated projection signs each comprising
2No aluminium panels 1050 x 700 x 50mm (*manufacture size tbc on survey)
finished into grey with white & yellow vinyl logo's applied to face
panels fitted to aluminium frame & bracket & face fixed to fascia sign in positions shown
scale 1:20

double sided non illuminated
projection sign 1050 x 700 x 50mm
*manufacture size tbc on survey



west & south elevation sign side profiles
non illuminated aluminium panel 11400 / 24000 x 860mm
*manufacture size tbc on survey
finished into grey with white & yellow vinyl logo's each 4460 x 750mm o/a applied to face
scale 1:10



west & south elevation plan view
not to scale