



Plot A Material Specification

- 1 Brick type used throughout building - textured clinker brick, engobe/coal fired. Bond - random. Colour - brown/purple variegated brick with a degree of patterning within each brick. Mortar - flush pointed, colour to be determined after review of sample boards

2 Ground and first floor horizontal ribbed texture

3 Stair cores and lift over runs/roof access elements expressed with sawtooth bond

4 Vertical stretcher bond to window heads

5 Lower roof terrace walls – pattern formed from absent headers

6 Glazed brick band to base of building. Bond - random. Colour - dark green
- 7 Cantilevered reconstituted stone canopy with recessed lighting to communal entrances, polished finish. Colour - light grey

8 Cantilevered reconstituted stone canopy with recessed lighting to maisonette entrances, polished finish. Colour - light grey

9 Reconstituted stone balcony ledge, polished finish. Colour - light grey

10 Reconstituted stone window base, forming recessed seat, polished finish. Colour - light grey

11 Reconstituted stone banding, polished finish. Colour - light grey

12 Reconstituted stone banding to balcony, polished finish. Colour - light grey

13 Concrete upstand to ground floor screens

14 Clear glazed communal entrance door, with full height glazed window above. Door set to be PAS 24 Approved. Colour - light bronze/gold
- 15 High quality lighting to communal entrance areas

16 Slip resistant decorative tile, pattern A to communal entrance floor and walls. Tile pattern extends to extent of overhead canopy externally

17 Suspended stainless steel soffit with mirrored finish to communal entrance lobby ceiling

18 Slip resistant decorative tile, pattern B to maisonette entrance threshold. Tile pattern extends to extent of overhead canopy externally

19 Refuse door - perforated anodised aluminium. Colour - light bronze/gold

20 Solid core private entrance door, with clear glazed side light. Door set to be PAS 24 Approved. Colour - TBC

21 Clear glazed communal entrance door to garden, with clear glazed side panel. Door set to be PAS 24 Approved. Colour - light bronze/gold

22 Clear glazed window with solid side opening to match frame. Frame and opening side panel - anodised aluminium. Colour - light bronze/gold
- 23 Clear glazed balcony door. Frame anodised aluminium. Colour - light bronze/gold

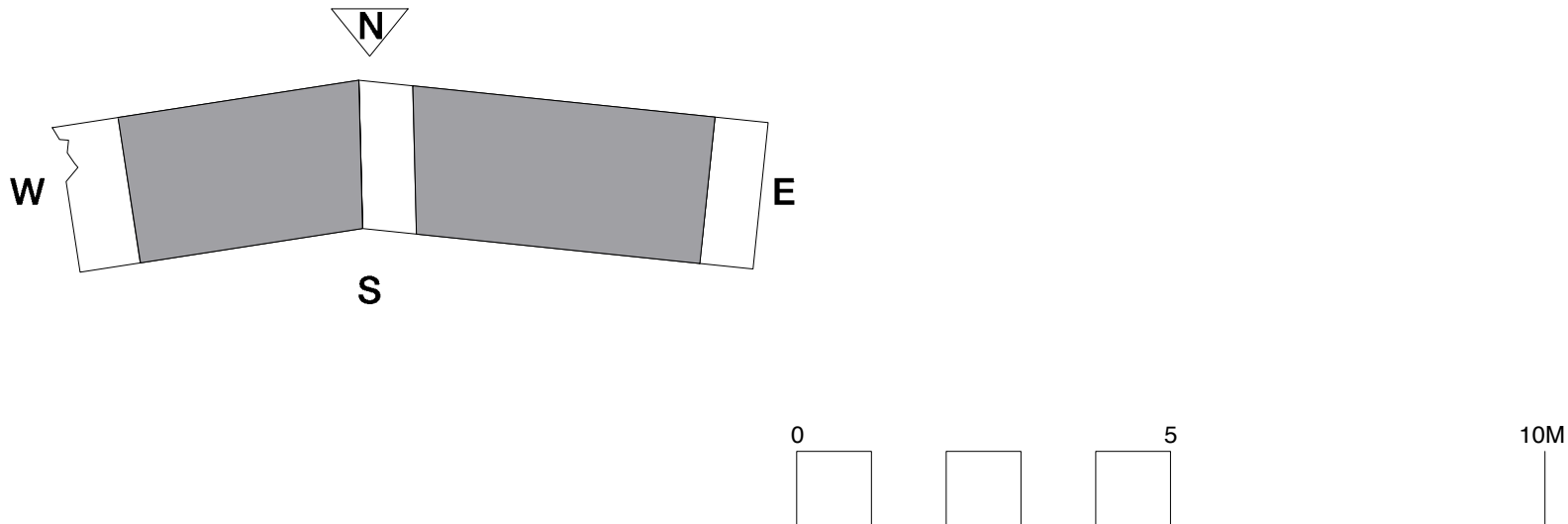
24 Window frame set behind brickwork reveal, minimum set back 225mm

25 Polyester powder coated steel section balustrade. Colour - light bronze/gold to match window frames. Random balustrade spacing

26 Polyester powder coated steel section balustrade. Colour - light bronze/gold to match window frames. Consistent balustrade spacing

27 Full height anodised perforated aluminium panels, with a square channel profile. Panels to be fixed at ends. Middle sections may be movable, subject to detailed solar shading analysis

28 Anodised aluminium perforated acoustic attenuation panel. Colour - light bronze/gold



Revisions			Copyright Hawkins Brown Architects LLP No implied license exists. This drawing should not be used to calculate areas for the purposes of valuation. Do not scale this drawing. All dimensions to be checked on site by the contractor and such dimensions to be their responsibility. All work must comply with relevant British Standards and Building Regulations requirements. Drawing errors and omissions to be reported to the architect.	Scale 1:100@A1	Date February 2014	Project Agar Grove Estate Regeneration	Hawkins\Brown 60 Bastwick Street London EC1V 3TN 020 7336 8030t 020 7336 8851f
Date	Rev	Note		Drawn by EC / PK	Checked by SR		
24.02.14	A	Green roofs added to part of terraces Boundary condition to Agar Childrens centre shown		Job Number HB1423	Status Planning	Drawing Plot A North Elevation	
							Drawing No. & Revision 1423_DWG_PL_A_00_250_A



Plot A Material Specification

- 1 Brick type used throughout building - textured clinker brick, engobe/coal fired. Bond - random. Colour - brown/purple variegated brick with a degree of patterning within each brick. Mortar - flush pointed, colour to be determined after review of sample boards

2 Ground and first floor horizontal ribbed texture

3 Stair cores and lift over runs/roof access elements expressed with sawtooth bond

4 Vertical stretcher bond to window heads

5 Lower roof terrace walls – pattern formed from absent headers

6 Glazed brick band to base of building. Bond - random. Colour - dark green
- 7 Cantilevered reconstituted stone canopy with recessed lighting to communal entrances, polished finish. Colour - light grey

8 Cantilevered reconstituted stone canopy with recessed lighting to maisonette entrances, polished finish. Colour - light grey

9 Reconstituted stone balcony ledge, polished finish. Colour - light grey

10 Reconstituted stone window base, forming recessed seat, polished finish. Colour - light grey

11 Reconstituted stone banding, polished finish. Colour - light grey

12 Reconstituted stone banding to balcony, polished finish. Colour - light grey

13 Concrete upstand to ground floor screens

14 Clear glazed communal entrance door, with full hight glazed window above. Door set to be PAS 24 Approved. Colour - light bronze/gold
- 15 High quality lighting to communal entrance areas

16 Slip resistant decorative tile, pattern A to communal entrance floor and walls. Tile pattern extends to extent of overhead canopy externally

17 Suspended stainless steel soffit with mirrored finish to communal entrance lobby ceiling

18 Slip resistant decorative tile, pattern B to maisonette entrance threshold. Tile pattern extends to extent of overhead canopy externally

19 Refuse door - perforated anodised aluminium. Colour - light bronze/gold

20 Solid core private entrance door, with clear glazed side light. Door set to be PAS 24 Approved. Colour - TBC

21 Clear glazed communal entrance door to garden, with clear glazed side panel. Door set to be PAS 24 Approved. Colour - light bronze/gold

22 Clear glazed window with solid side opening to match frame. Frame and opening side panel - anodised aluminium. Colour - light bronze/gold
- 23 Clear glazed balcony door. Frame anodised aluminium. Colour - light bronze/gold

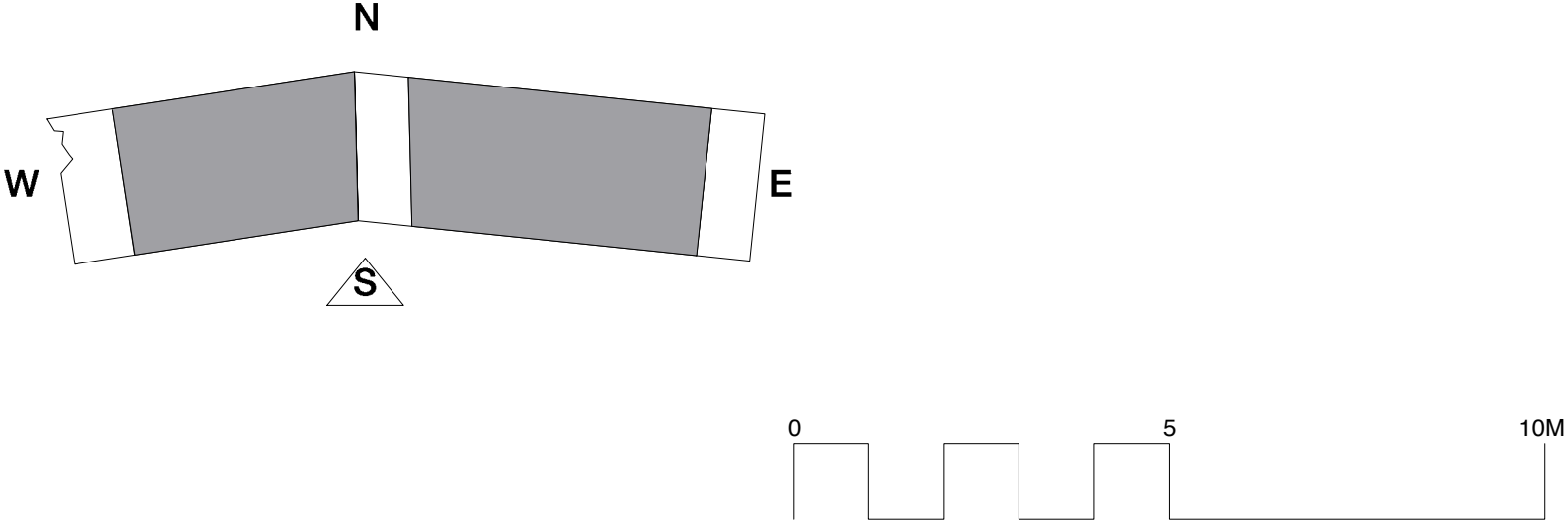
24 Window frame set behind brickwork reveal, minimum set back 225mm

25 Polyester powder coated steel section balustrade. Colour - light bronze/gold to match window frames. Random balustrade spacing

26 Polyester powder coated steel section balustrade. Colour - light bronze/gold to match window frames. Consistent balustrade spacing

27 Full height anodised perforated aluminium panels, with a square channel profile. Panels to be fixed at ends. Middle sections may be movable, subject to detailed solar shading analysis

28 Anodised aluminium perforated acoustic attenuation panel. Colour - light bronze/gold



Revisions			Copyright Hawkins Brown Architects LLP No implied license exists. This drawing should not be used to calculate areas for the purposes of valuation. Do not scale this drawing. All dimensions to be checked on site by the contractor and such dimensions to be their responsibility. All work must comply with relevant British Standards and Building Regulations requirements. Drawing errors and omissions to be reported to the architect.	Scale	Date	Project Agar Grove Estate Regeneration	<div>Hawkins\Brown</div> <div>60 Bastwick Street London EC1V 3TN 020 7336 8030t 020 7336 8851f</div> <div>mail@hawkinsbrown.com www.hawkinsbrown.com</div>
Date	Rev	Note		Drawn by	Checked by		
24.02.14	A	Green roofs added to part of terraces		EC/PK	EC/PK	Drawing Plot A South Elevation	
				Job Number	Status		
			HB1423	Planning	Drawing No. & Revision 1423_DWG_PL_A_00_251_A		

Revisions

Hawkins\Brown

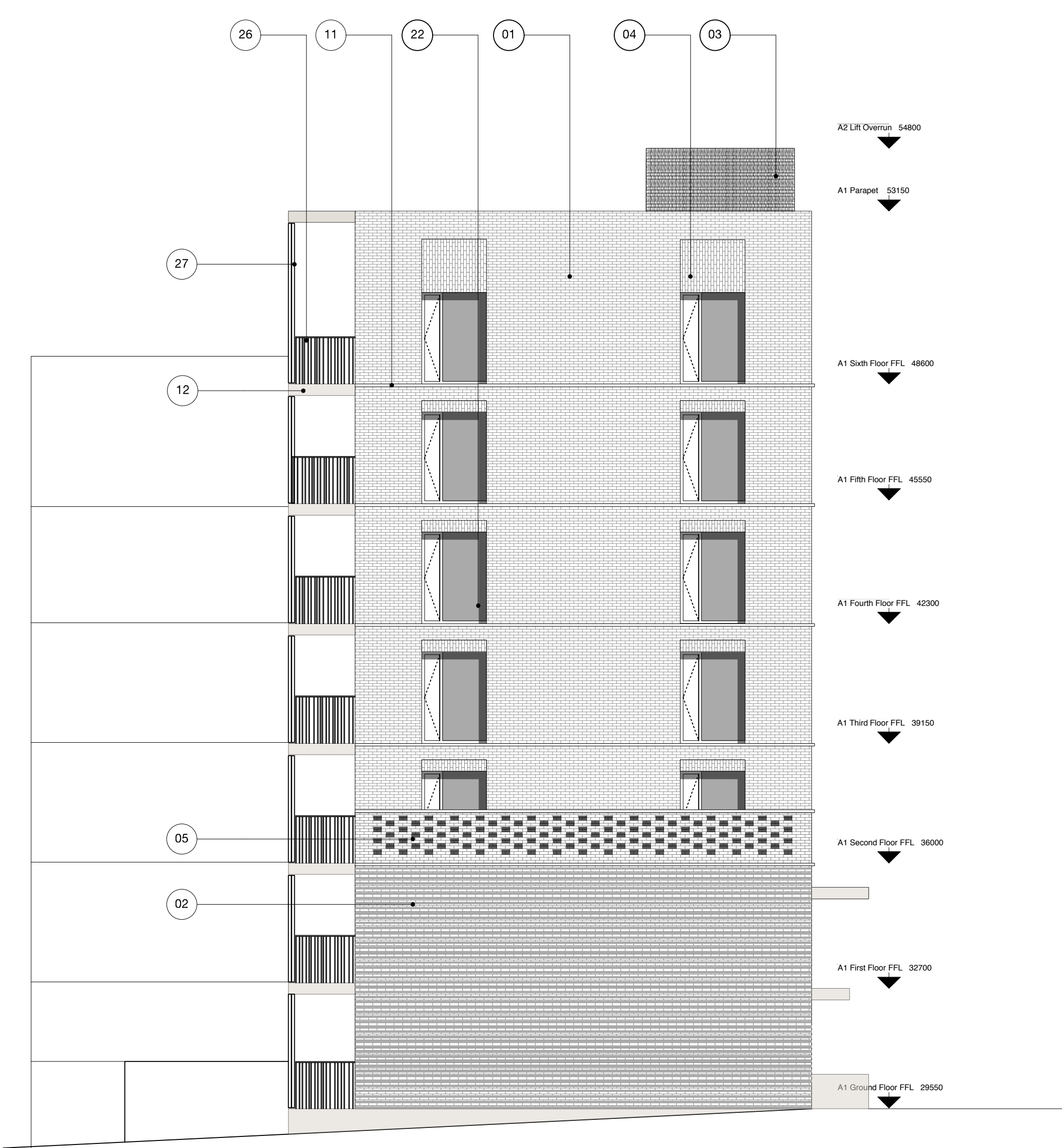
60 Bastwick Street
London EC1V 3TN
020 7336 8030t
020 7336 8851f

mail@hawkinsbrown.com
www.hawkinsbrown.com

Project
Agar Grove
Estate Regeneration

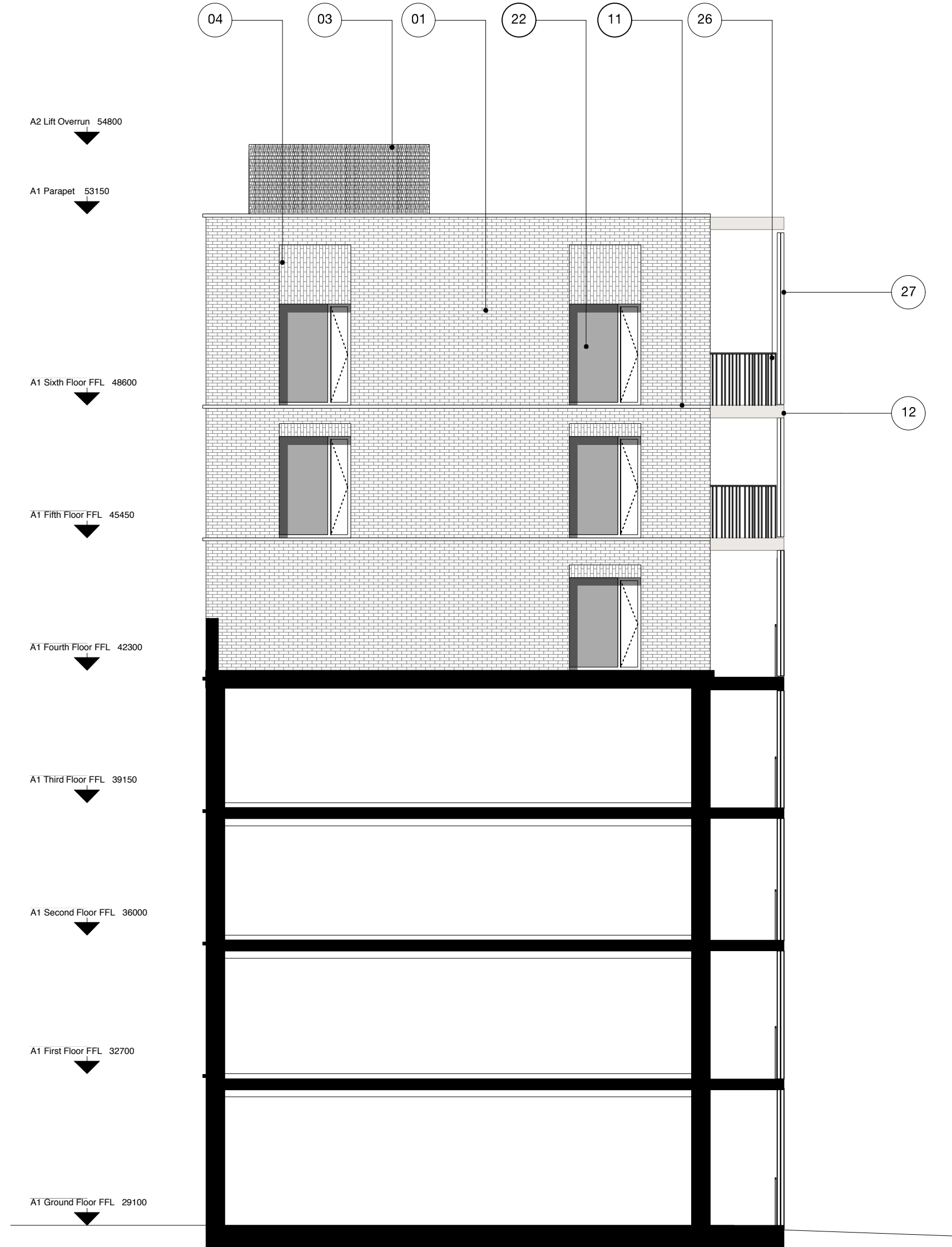
Drawing
Plot A
Side Elevations E1 & W1

Scale @ A1 @ (A3) 1:100 (200)	Date December 2013
Drawn by PK	Checked by SR
Job Number HB1423	Status Planning
Drawing No. & Revision 1423_DWG_PL_A_00_252	



Side Elevation East (E1)

Scale 1:100 @ A1



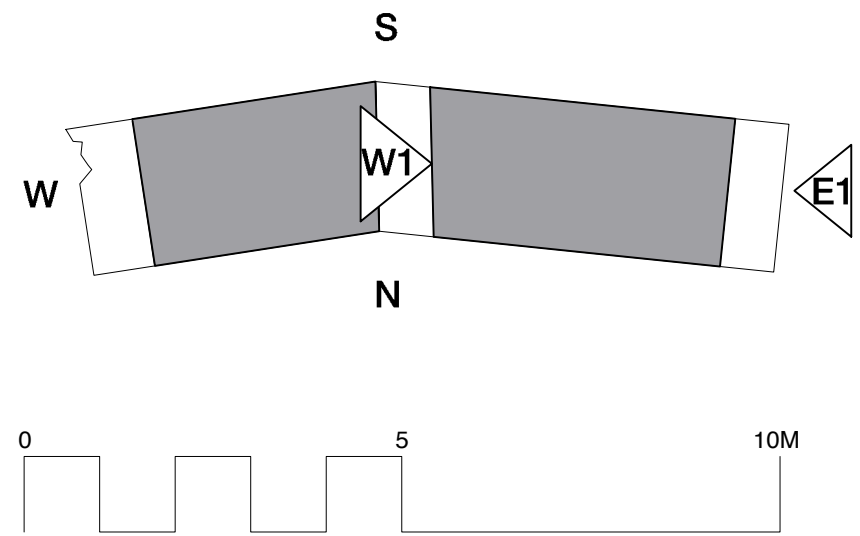
Side Elevation West (W1)

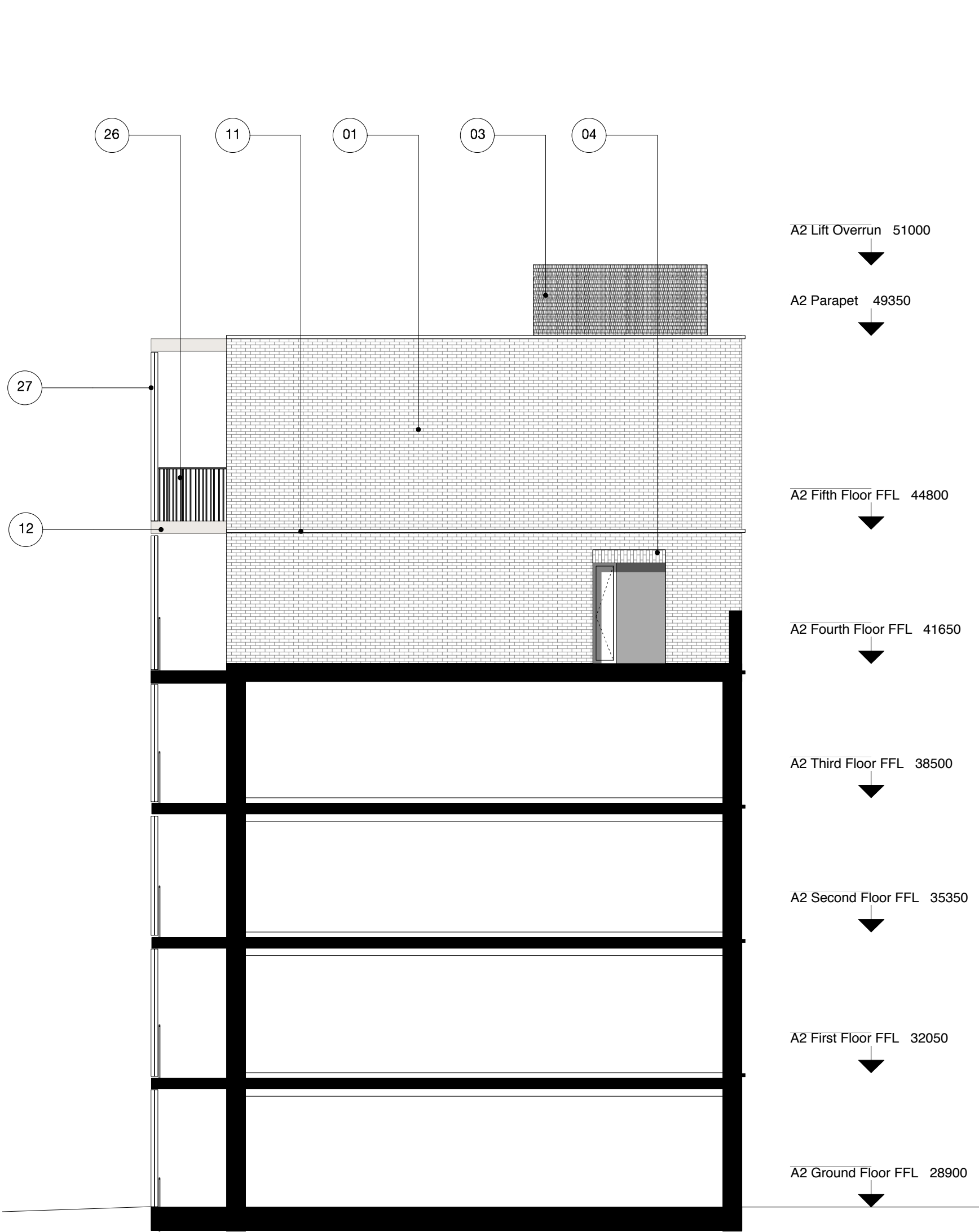
Scale 1:100 @ A1

Plot A Material Specification

- | | | |
|---|---|--|
| ① Brick type used throughout building - textured clinker brick, engobe/coal fired. Bond - random. Colour - brown/purple variegated brick with a degree of patterning within each brick. Mortar - flush pointed, colour to be determined after review of sample boards | ⑦ Cantilevered reconstituted stone canopy with recessed lighting to communal entrances, polished finish. Colour - light grey | ⑮ High quality lighting to communal entrance areas |
| ② Ground and first floor horizontal ribbed texture | ⑧ Cantilevered reconstituted stone canopy with recessed lighting to maisonette entrances, polished finish. Colour - light grey | ⑯ Slip resistant decorative tile, pattern A to communal entrance floor and walls. Tile pattern extends to extent of overhead canopy externally |
| ③ Stair cores and lift over runs/roof access elements expressed with sawtooth bond | ⑨ Reconstituted stone balcony ledge, polished finish. Colour - light grey | ⑰ Suspended stainless steel soffit with mirrored finish to communal entrance lobby ceiling |
| ④ Vertical stretcher bond to window heads | ⑩ Reconstituted stone window base, forming recessed seat, polished finish. Colour - light grey | ⑱ Slip resistant decorative tile, pattern B to maisonette entrance threshold. Tile pattern extends to extent of overhead canopy externally |
| ⑤ Lower roof terrace walls - pattern formed from absent headers | ⑪ Reconstituted stone banding, polished finish. Colour - light grey | ⑲ Refuse door - perforated anodised aluminium. Colour - light bronze/gold |
| ⑥ Glazed brick band to base of building. Bond - random. Colour - dark green | ⑫ Reconstituted stone banding to balcony, polished finish. Colour - light grey | ⑳ Solid core private entrance door, with clear glazed side light. Door set to be PAS 24 Approved. Colour - TBC |
| | ⑬ Concrete upstand to ground floor screens | ㉑ Clear glazed communal entrance door to garden, with clear glazed side panel. Door set to be PAS 24 Approved. Colour - light bronze/gold |
| | ⑭ Clear glazed communal entrance door, with full height glazed window above. Door set to be PAS 24 Approved. Colour - light bronze/gold | ㉒ Clear glazed window with solid side opening to match frame. Frame and opening side panel - anodised aluminium. Colour - light bronze/gold |

- | | |
|---|--|
| ⑳ Clear glazed balcony door. Frame anodised aluminium. Colour - light bronze/gold | ㉓ Polyester powder coated steel section balustrade. Colour - light bronze/gold to match window frames. Random balustrade spacing |
| ㉑ Window frame set behind brickwork reveal, minimum set back 225mm | ㉔ Polyester powder coated steel section balustrade. Colour - light bronze/gold to match window frames. Consistent balustrade spacing |
| ㉒ Full height anodised perforated aluminium panels, with a square channel profile. Panels to be fixed at ends. Middle sections may be movable, subject to detailed solar shading analysis | ㉕ Anodised aluminium perforated acoustic attenuation panel. Colour - light bronze/gold |





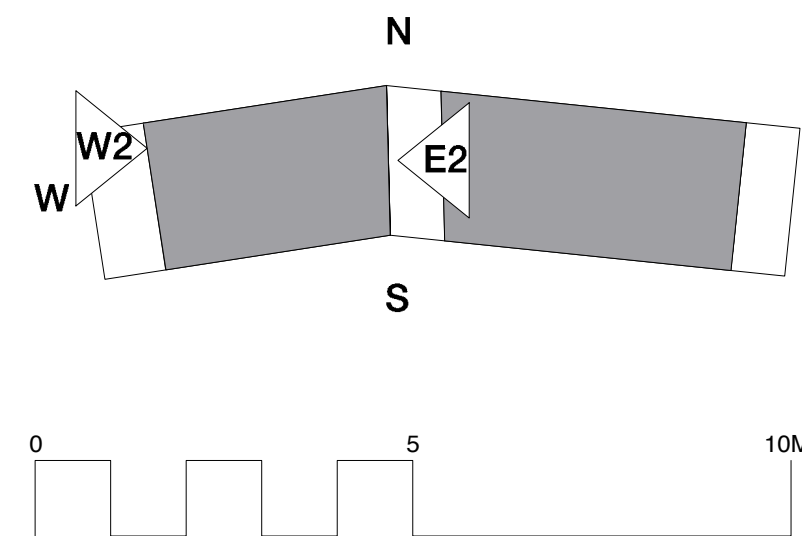
01 Side Elevation East (E2)
Scale 1:100 @ A1



02 Side Elevation West (W2)
Scale 1:100 @ A1

Plot A Material Specification

- | | | | | | | | |
|---|---|----|---|----|--|----|---|
| 1 | Brick type used throughout building - textured clinker brick, engobe/coal fired. Bond - random. Colour - brown/purple variegated brick with a degree of patterning within each brick. Mortar - flush pointed, colour to be determined after review of sample boards | 7 | Cantilevered reconstituted stone canopy with recessed lighting to communal entrances, polished finish. Colour - light grey | 15 | High quality lighting to communal entrance areas | 23 | Clear glazed balcony door. Frame anodised aluminium. Colour - light bronze/gold |
| 2 | Ground and first floor horizontal ribbed texture | 8 | Cantilevered reconstituted stone canopy with recessed lighting to maisonette entrances, polished finish. Colour - light grey | 16 | Slip resistant decorative tile, pattern A to communal entrance floor and walls. Tile pattern extends to extent of overhead canopy externally | 24 | Window frame set behind brickwork reveal, minimum set back 225mm |
| 3 | Stair cores and lift over runs/roof access elements expressed with sawtooth bond | 9 | Reconstituted stone balcony ledge, polished finish. Colour - light grey | 17 | Suspended stainless steel soffit with mirrored finish to communal entrance lobby ceiling | 25 | Polyester powder coated steel section ballustrade. Colour - light bronze/gold to match window frames. Random ballustrade spacing |
| 4 | Vertical stretcher bond to window heads | 10 | Reconstituted stone window base, forming recessed seat, polished finish. Colour - light grey | 18 | Slip resistant decorative tile, pattern B to maisonette entrance threshold. Tile pattern extends to extent of overhead canopy externally | 26 | Polyester powder coated steel section ballustrade. Colour - light bronze/gold to match window frames. Consistent ballustrade spacing |
| 5 | Lower roof terrace walls - pattern formed from absent headers | 11 | Reconstituted stone banding, polished finish. Colour - light grey | 19 | Refuse door - perforated anodised aluminium. Colour - light bronze/gold | 27 | Full height anodised perforated aluminium panels, with a square channel profile. Panels to be fixed at ends. Middle sections may be movable, subject to detailed solar shading analysis |
| 6 | Glazed brick band to base of building. Bond - random. Colour - dark green | 12 | Reconstituted stone banding to balcony, polished finish. Colour - light grey | 20 | Solid core private entrance door, with clear glazed side light. Door set to be PAS 24 Approved. Colour - TBC | 28 | Anodised aluminium perforated acoustic attenuation panel. Colour - light bronze/gold |
| | | 13 | Concrete upstand to ground floor screens | 21 | Clear glazed communal entrance door to garden, with clear glazed side panel. Door set to be PAS 24 Approved. Colour - light bronze/gold | | |
| | | 14 | Clear glazed communal entrance door, with full height glazed window above. Door set to be PAS 24 Approved. Colour - light bronze/gold | 22 | Clear glazed window with solid side opening to match frame. Frame and opening side panel - anodised aluminium. Colour - light bronze/gold | | |



Copyright Hawkins Brown Architects LLP

No implied license exists. This drawing should not be used to calculate areas for the purposes of valuation. Do not scale this drawing. All dimensions to be checked on site by the contractor and such dimensions to be their responsibility. All work must comply with relevant British Standards and Building Regulations requirements. Drawing errors and omissions to be reported to the architect.

Revisions

Date	Rev	Note
24.02.14	A	Level to terrace W2 corrected

Hawkins\Brown

60 Bastwick Street
London EC1V 3TN
020 7336 8030t
020 7336 8851f

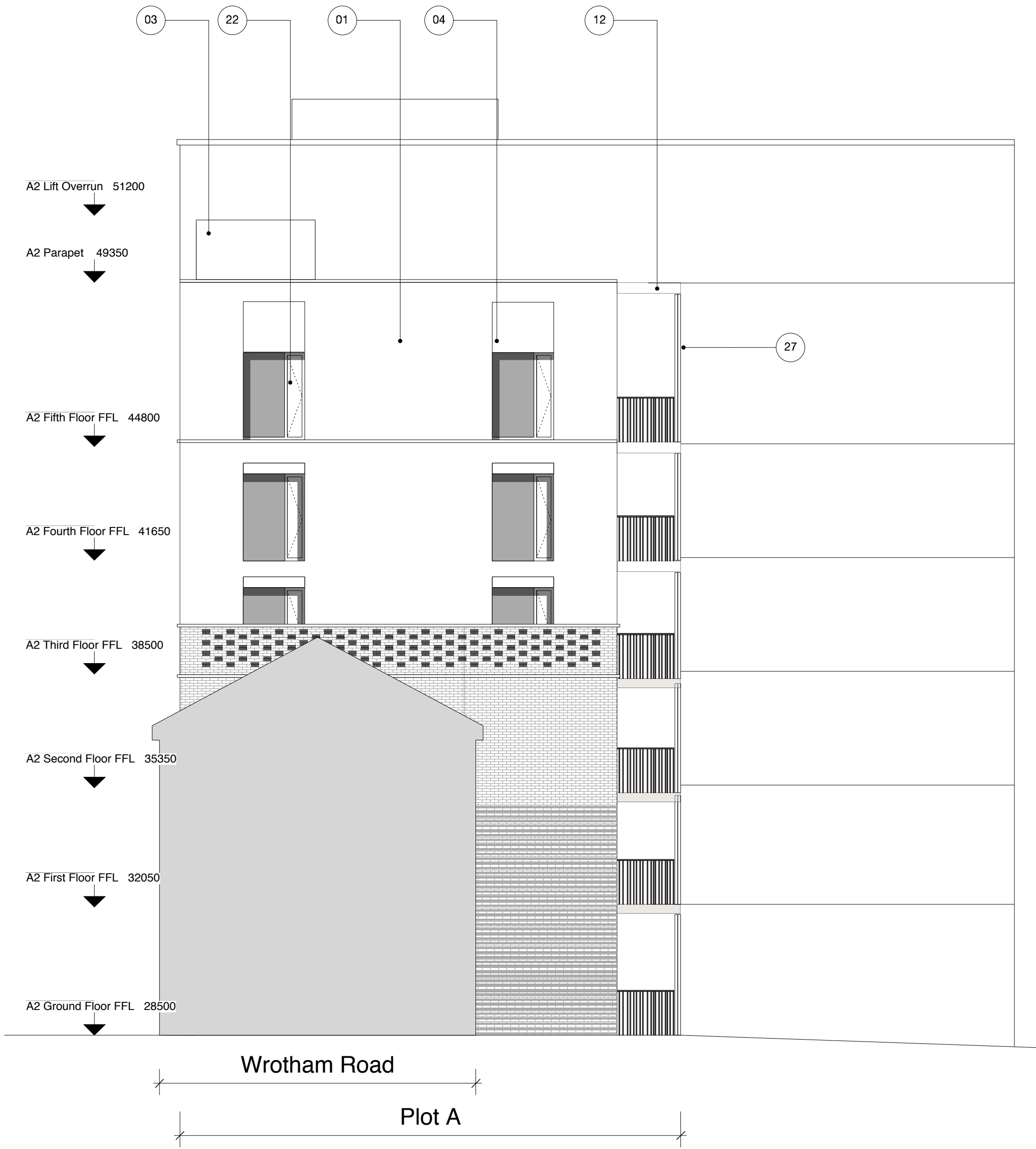
mail@hawkinsbrown.com
www.hawkinsbrown.com

Project
Agar Grove
Estate Regeneration

Drawing
Plot A
Side Elevations E2 & W2

Scale @ A1 @ (A3) 1:100 (200)	Date February 2014
Drawn by PK	Checked by SR
Job Number HB1423	Status Planning

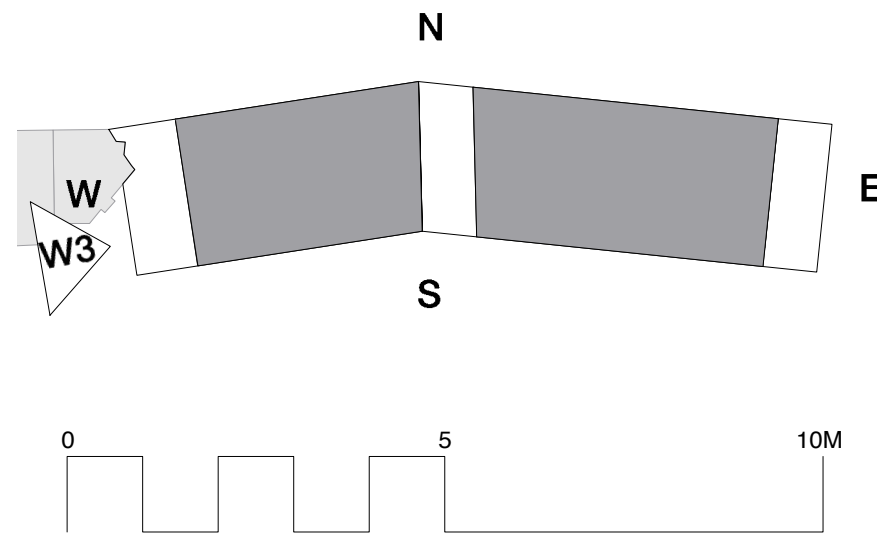
Drawing No. & Revision
1423_DWG_PL_A_00_253_A



01 Side Elevation West (W3)
Scale 1:100 @ A1

Plot A Material Specification

- | | | | | | | | |
|---|---|----|---|----|--|----|---|
| 1 | Brick type used throughout building - textured clinker brick, engobe/coal fired. Bond - random. Colour - brown/purple variegated brick with a degree of patterning within each brick. Mortar - flush pointed, colour to be determined after review of sample boards | 7 | Cantilevered reconstituted stone canopy with recessed lighting to communal entrances, polished finish. Colour - light grey | 15 | High quality lighting to communal entrance areas | 23 | Clear glazed balcony door. Frame anodised aluminium. Colour - light bronze/gold |
| 2 | Ground and first floor horizontal ribbed texture | 8 | Cantilevered reconstituted stone canopy with recessed lighting to maisonette entrances, polished finish. Colour - light grey | 16 | Slip resistant decorative tile, pattern A to communal entrance floor and walls. Tile pattern extends to extent of overhead canopy externally | 24 | Window frame set behind brickwork reveal, minimum set back 225mm |
| 3 | Stair cores and lift over runs/roof access elements expressed with sawtooth bond | 9 | Reconstituted stone balcony ledge, polished finish. Colour - light grey | 17 | Suspended stainless steel soffit with mirrored finish to communal entrance lobby ceiling | 25 | Polyester powder coated steel section ballustrade. Colour - light bronze/gold to match window frames. Random ballustrade spacing |
| 4 | Vertical stretcher bond to window heads | 10 | Reconstituted stone window base, forming recessed seat, polished finish. Colour - light grey | 18 | Slip resistant decorative tile, pattern B to maisonette entrance threshold. Tile pattern extends to extent of overhead canopy externally | 26 | Polyester powder coated steel section ballustrade. Colour - light bronze/gold to match window frames. Consistent ballustrade spacing |
| 5 | Lower roof terrace walls - pattern formed from absent headers | 11 | Reconstituted stone banding, polished finish. Colour - light grey | 19 | Refuse door - perforated anodised aluminium. Colour - light bronze/gold | 27 | Full height anodised perforated aluminium panels, with a square channel profile. Panels to be fixed at ends. Middle sections may be movable, subject to detailed solar shading analysis |
| 6 | Glazed brick band to base of building. Bond - random. Colour - dark green | 12 | Reconstituted stone banding to balcony, polished finish. Colour - light grey | 20 | Clear glazed communal entrance door, with clear glazed side light. Door set to be PAS 24 Approved. Colour - TBC | 28 | Anodised aluminium perforated acoustic attenuation panel. Colour - light bronze/gold |
| | | 13 | Concrete upstand to ground floor screens | 21 | Clear glazed communal entrance door to garden, with clear glazed side panel. Door set to be PAS 24 Approved. Colour - light bronze/gold | | |
| | | 14 | Clear glazed communal entrance door, with full height glazed window above. Door set to be PAS 24 Approved. Colour - light bronze/gold | 22 | Clear glazed window with solid side opening to match frame. Frame and opening side panel - anodised aluminium. Colour - light bronze/gold | | |



Copyright Hawkins Brown Architects LLP

No implied license exists. This drawing should not be used to calculate areas for the purposes of valuation. Do not scale this drawing. All dimensions to be checked on site by the contractor and such dimensions to be their responsibility. All work must comply with relevant British Standards and Building Regulations requirements. Drawing errors and omissions to be reported to the architect.

Revisions

Hawkins\Brown

60 Bastwick Street
London EC1V 3TN
020 7336 8030t
020 7336 8851f

mail@hawkinsbrown.com
www.hawkinsbrown.com

Project
Agar Grove
Estate Regeneration

Drawing
Plot A
Side Elevation W3

Scale @ A1 @ (A3) 1:100 (200)	Date February 2014
Drawn by JW	Checked by SR
Job Number HB1423	Status Planning
Drawing No. & Revision 1423_DWG_PL_A_00_254	