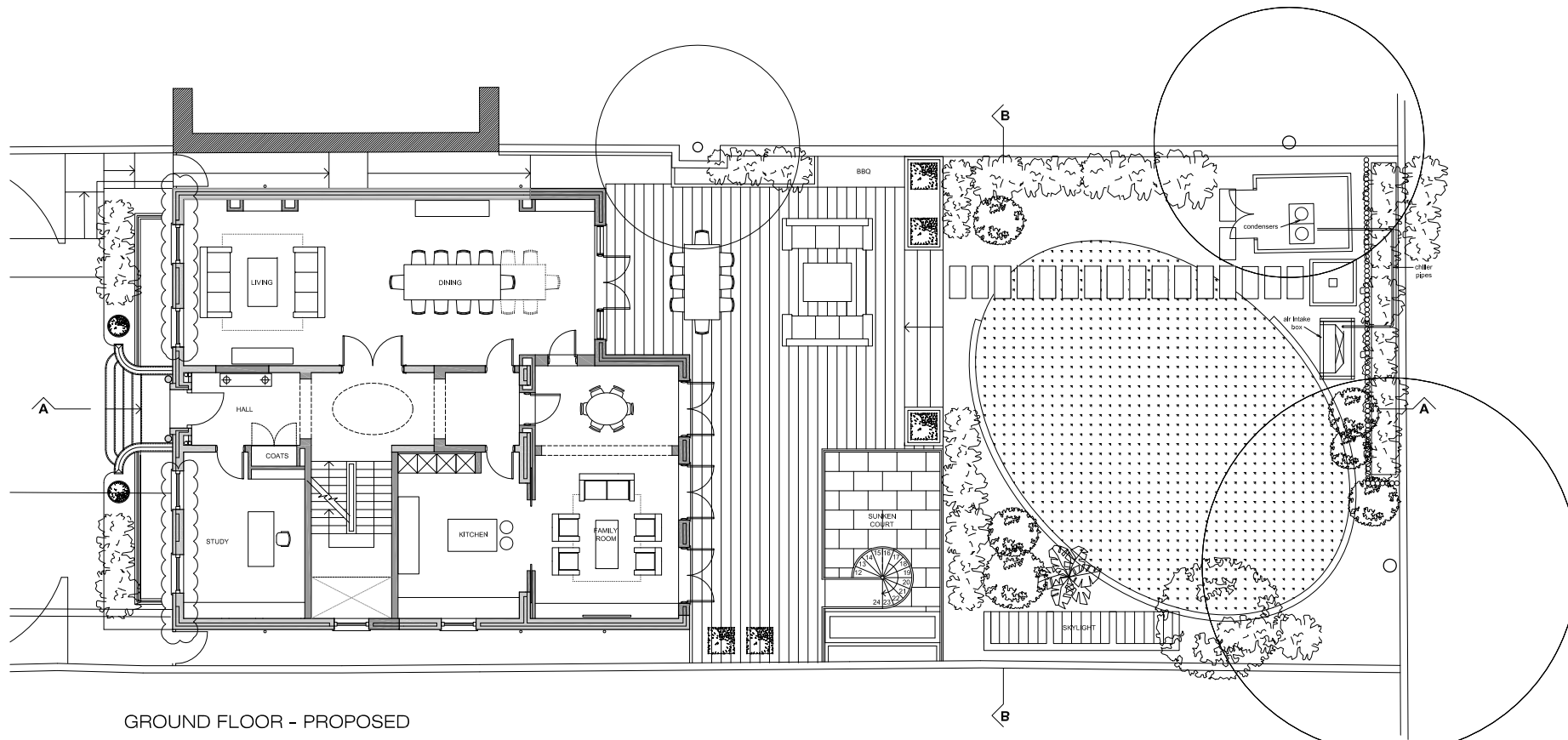
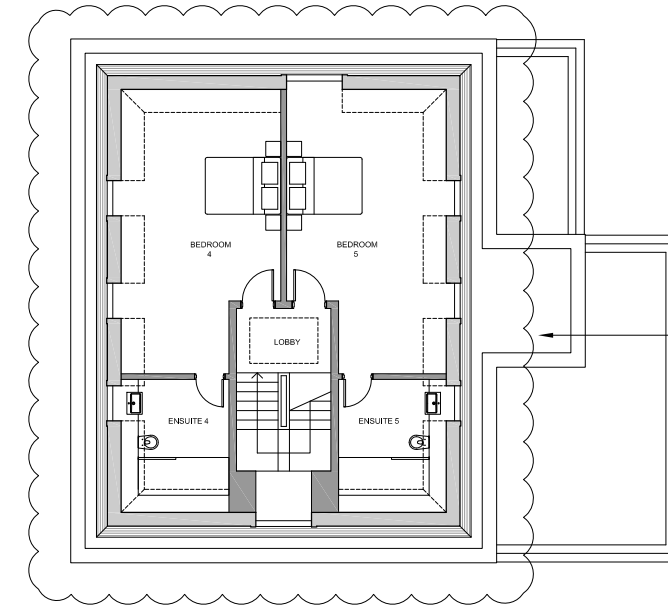


0 10 20 30 40 50 60 70 80 90 100



GROUND FLOOR - PROPOSED

CHANGE IN RELATION TO PLANNING PERMISSION REF.2010/0945/P - REDUCED NUMBER OF WINDOWS TO FRONT ELEVATION (APPROVED ON 6TH APRIL 2011, REF.2011/0405/P) REMAINS UNCHANGED IN RELATION TO APPROVED VARIATION SCHEME REF.2011/0405/P



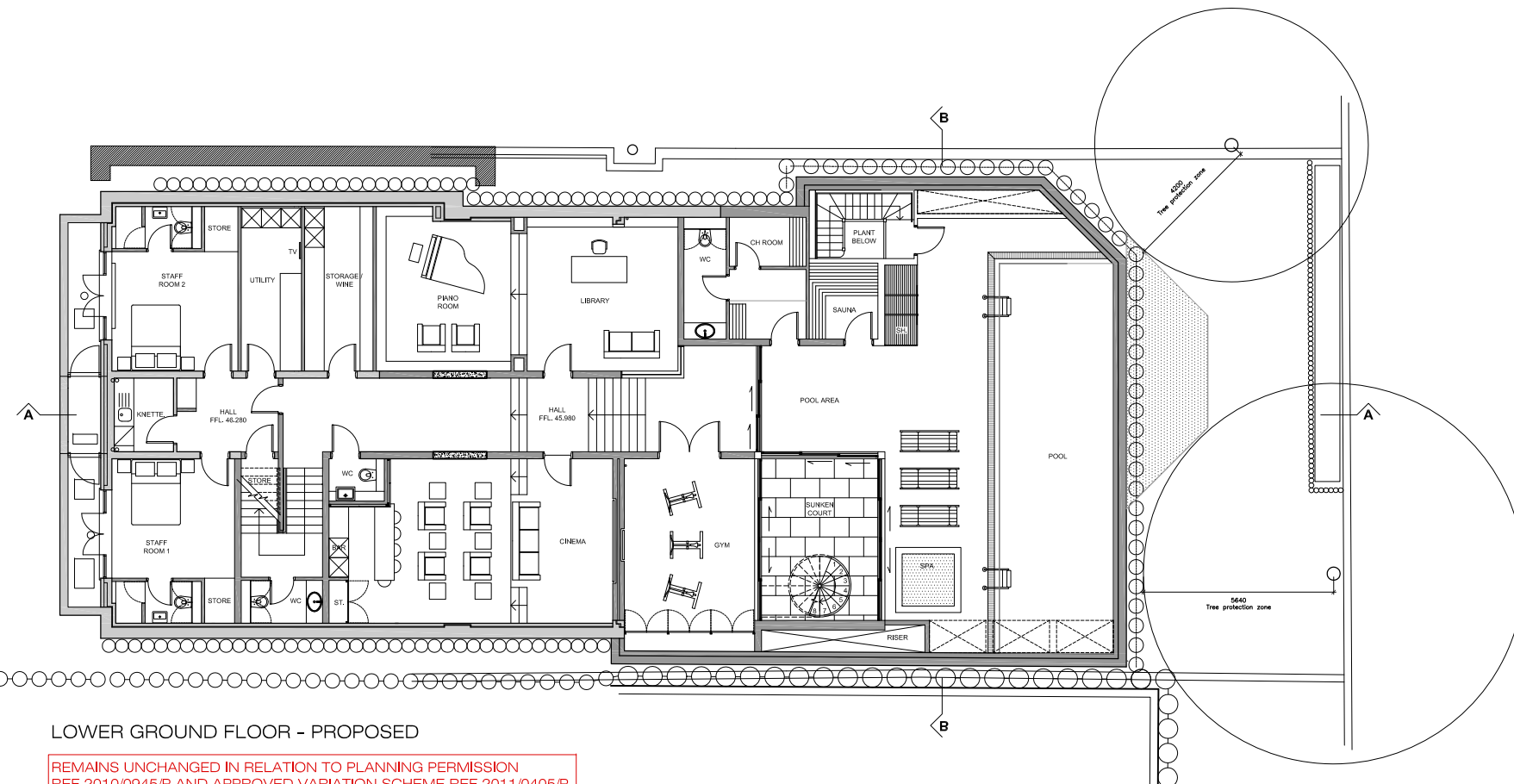
SECOND FLOOR - PROPOSED

MINOR INTERNAL LAYOUT CHANGES IN RELATION TO PLANNING PERMISSION REF.2010/0945/P CHANGES IN RELATION TO APPROVED VARIATION SCHEME REF.2011/0405/P - REINSTATED PARAPET

**General notes:**  
 This drawing is copyright of KSR architects. This drawing must be read in conjunction with the designer's risk assessment, specification and all other relevant documentation and drawings. KSR architects accept no liability for any expense, loss or damage of whatsoever nature and however arising from any variation made to this drawing or in the execution of the work to which it relates which has not been referred to them and their approval obtained.  
 Do not scale from this drawing or the digital data, only figured dimensions are to be used. For Planning refer to linear scale.  
 Check all dimensions on site.

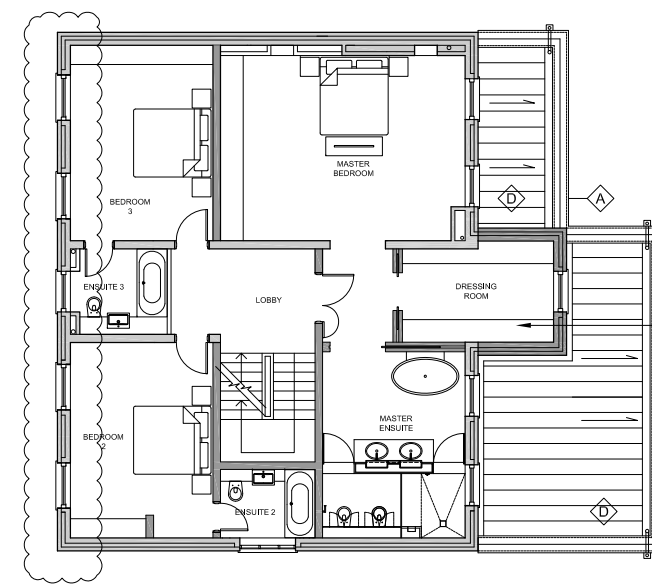
**MATERIAL LEGEND**  
 A. STONE  
 B. RENDER  
 C. TIMBER FRAME WINDOWS TO MATCH EXISTING  
 D. LEAD ROOF  
 E. GLAZED BALUSTRADE

Consented extensions (04/05/2010)



LOWER GROUND FLOOR - PROPOSED

REMAINS UNCHANGED IN RELATION TO PLANNING PERMISSION REF.2010/0945/P AND APPROVED VARIATION SCHEME REF.2011/0405/P



FIRST FLOOR - PROPOSED

CHANGE IN RELATION TO PLANNING PERMISSION REF.2010/0945/P - REDUCED NUMBER OF WINDOWS TO FRONT ELEVATION (APPROVED ON 6TH APRIL 2011, REF.2011/0405/P) REMAINS UNCHANGED IN RELATION TO APPROVED VARIATION SCHEME REF.2011/0405/P

Consented extensions (04/05/2010)

F	Minor amendments to front elevation.	26.10.11	GM	RS
E	Minor amendments to front elevation.	18.01.11	GM	RS
D	Extension to the rear on first floor amended to match consented layout of No. 41	11.02.10	GM	RS
C	Minor amendments to location of windows in Ground Floor. Extension added to the rear in first floor. Top floor consent amended to run continuously. See also planning amendments.	24.04.09	GM	RS
B	Shed to rear of Ground Floor Plan omitted.	18.02.09	GM	RS
A	Publication of Approval to the rear, excavation area in basement reduced, extension to the rear, minor amendments to main entrance steps.	24.11.08	GM	RS

Rev: Issues: 04/05/2010 By: CHD

© KSR architects

**KSR architects**

KSR architects  
 14 Greenland Street  
 London  
 NW1 0ND

t: +44 (0)20 7692 5000  
 f: +44 (0)20 7692 5050  
 www.ksr-architects.com

Project: **Proposed Alterations at 42 Queens Grove, NW8**

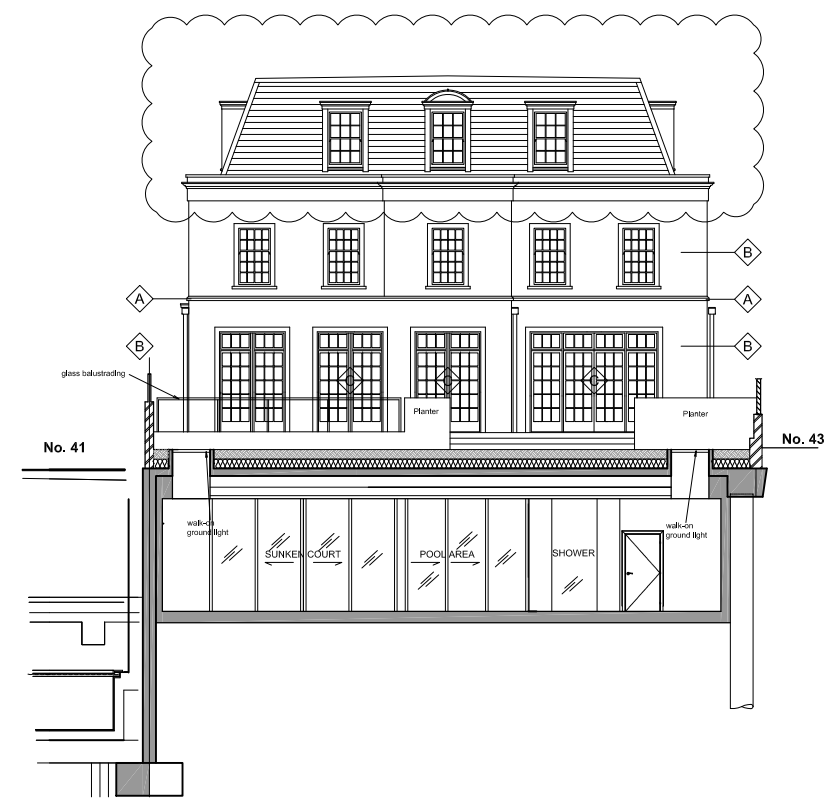
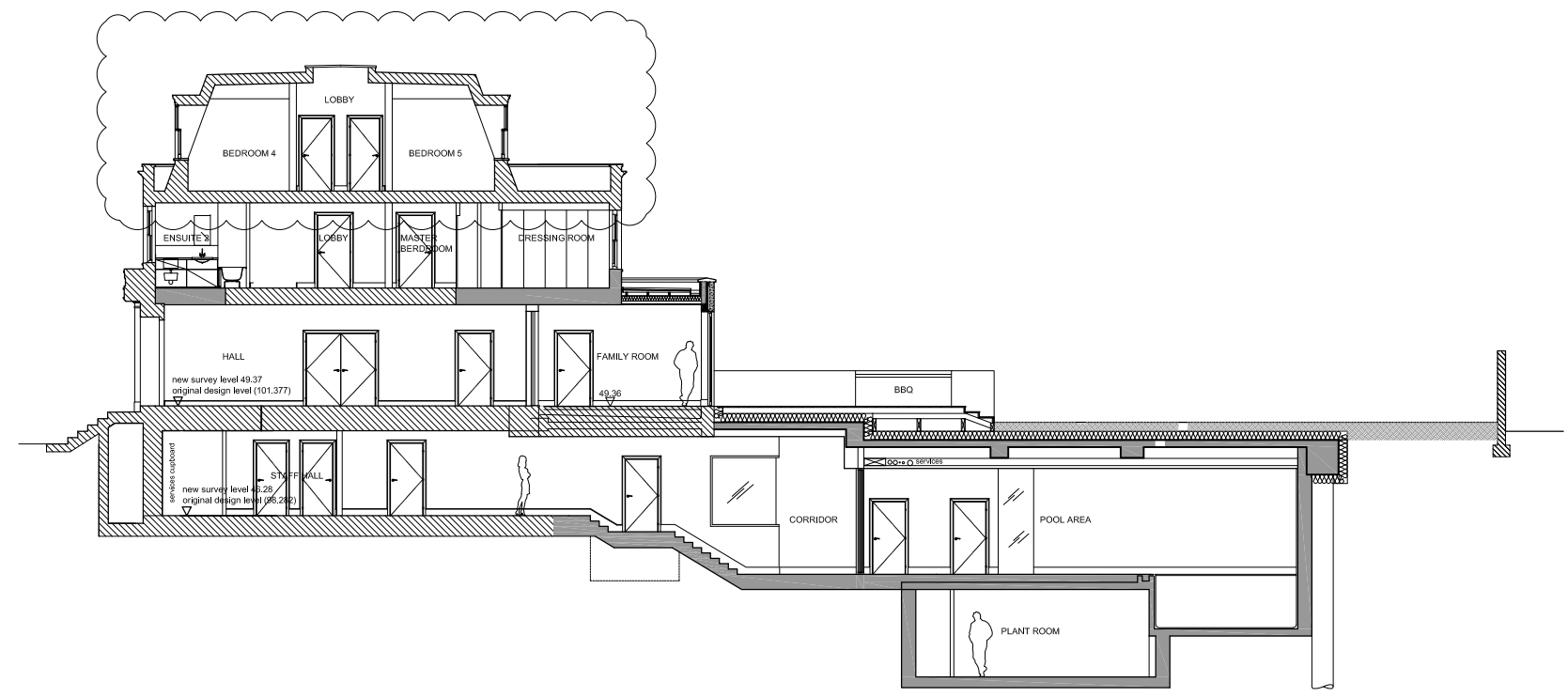
Title: **PROPOSED FLOOR PLANS**

Date: Oct 2008 Drawn by: GM Checked: RS  
 Scale: 1:100 @ A1 / 1:200 @ A3  
 Project Ref: Drawing No: Rev: No:

**QGR QGR-P-01 F**

**General notes:**  
 This drawing is copyright of KSR architects. This drawing must be read in conjunction with the designer's risk assessment, specification and all other relevant documentation and drawings. KSR architects accept no liability for any expense, loss or damage of whatsoever nature and however arising from any variation made to this drawing or in the execution of the work to which it relates which has not been referred to them and their approval obtained.  
 Do not scale from this drawing or the digital data, only figured dimensions are to be used. For Planning refer to linear scale.  
 Check all dimensions on site.

- MATERIAL LEGEND**
- A. STONE
  - B. RENDER
  - C. TIMBER FRAME WINDOWS TO MATCH EXISTING
  - D. LEAD ROOF
  - E. GLAZED BALUSTRADE



SECTION A-A - PROPOSED

CHANGE IN RELATION TO PLANNING PERMISSION REF.2010/0945/P - INCREASED MANSARD ROOF PITCH  
 CHANGE IN RELATION TO CONSENTED VARIATION SCHEME REF.2011/0405/P - INCREASED MANSARD ROOF PITCH, REINSTATED PARAPET

SECTION B-B - PROPOSED

CHANGE IN RELATION TO PLANNING PERMISSION REF.2010/0945/P - INCREASED MANSARD ROOF PITCH  
 CHANGE IN RELATION TO CONSENTED VARIATION SCHEME REF.2011/0405/P - INCREASED MANSARD ROOF PITCH, REINSTATED PARAPET

F	Minor amendments to front elevation.	26.10.11	GM	RS
E	Minor amendments to front elevation.	18.01.11	GM	RS
D	Extension to the rear on this floor amended to match consented layout of No. 41	11.02.10	GM	RS
C	Extension added to the rear on this floor. Top floor parapet amended to run continuously.	24.04.09	GM	RS
B	Minor amendments.	18.02.09	GM	RS
A	Extension added to rear elevation. Decorative elements added to enhance front and rear.	24.11.08	GM	RS

Rev: Issues  
 Drawn by: JGM/MSJ  
 Checked: BJC

© KSR architects



KSR architects  
 14 Greenfield Street  
 London  
 NW1 0ND  
 t: +44 (0)20 7692 5000  
 f: +44 (0)20 7692 5050  
 www.ksr-architects.com

Project:  
**Proposed Alterations at  
 42 Queens Grove, NW8**

Title:  
**PROPOSED SECTIONS**

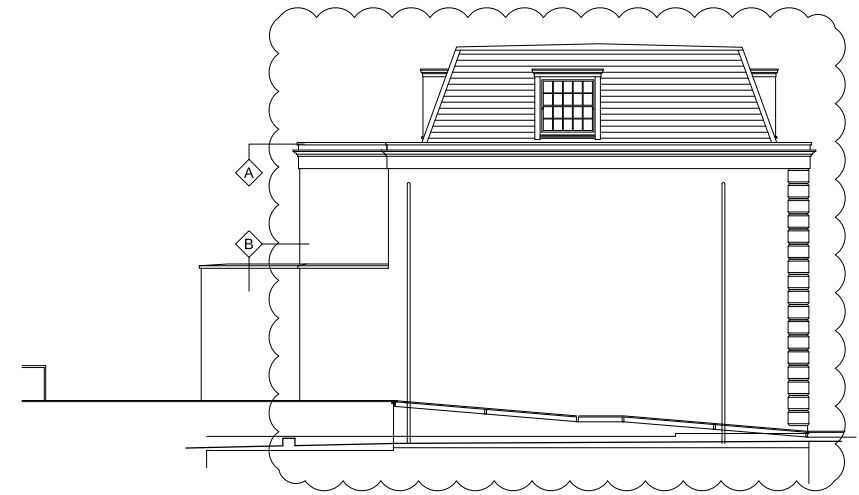
Date: Oct 2008  
 Drawn by: GM  
 Checked: RS

Scale: 1:100 @ A1 / 1:200 @ A3

Project Ref: QGR  
 Drawing No: QGR-P-02  
 Revision: F

**General notes:**  
 This drawing is copyright of KSR architects. This drawing must be read in conjunction with the designer's risk assessment, specification and all other relevant documentation and drawings. KSR architects accept no liability for any expense, loss or damage of whatsoever nature and however arising from any variation made to this drawing or in the execution of the work to which it relates which has not been referred to them and their approval obtained.  
 Do not scale from this drawing or the digital data, only figured dimensions are to be used. For Planning refer to linear scale.  
 Check all dimensions on site.

**MATERIAL LEGEND**  
 A. STONE  
 B. RENDER  
 C. TIMBER FRAME WINDOWS TO MATCH EXISTING  
 D. LEAD ROOF  
 E. GLAZED BALUSTRADE



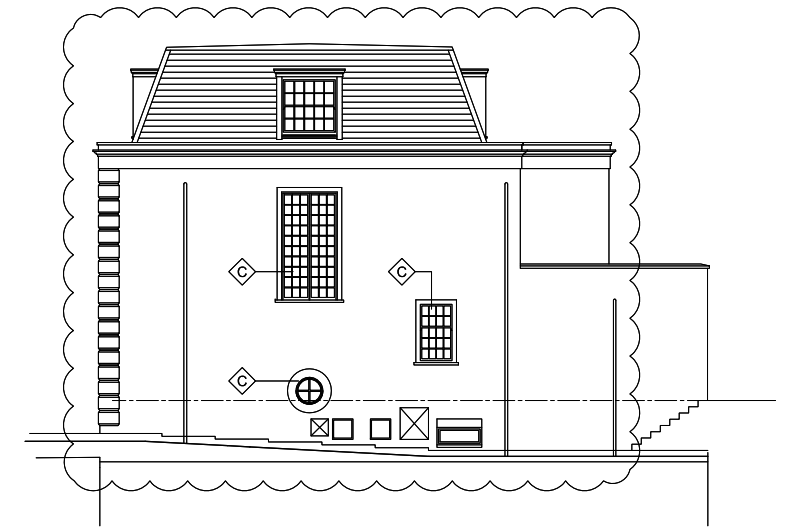
**SIDE (WEST) ELEVATION - PROPOSED**

CHANGE IN RELATION TO PLANNING PERMISSION REF.2010/0945/P - INCREASED MANSARD ROOF PITCH, FACADE DETAILING AMENDMENTS  
 CHANGE IN RELATION TO APPROVED VARIATION SCHEME REF.2011/0405/P - INCREASED MANSARD ROOF PITCH, FACADE DETAILING AMENDMENTS, REINSTATED PARAPET



**FRONT ELEVATION - PROPOSED**

CHANGE IN RELATION TO PLANNING PERMISSION REF.2010/0945/P - INCREASED MANSARD ROOF PITCH, FACADE DETAILING AMENDMENTS AND APPROVED (REF.2011/0405/P) REDUCED NUMBER OF WINDOWS TO FRONT ELEVATION  
 CHANGE IN RELATION TO APPROVED VARIATION SCHEME REF.2011/0405/P - INCREASED MANSARD ROOF PITCH, FACADE DETAILING AMENDMENTS AND REINSTATED PARAPET



**SIDE (EAST) ELEVATION - PROPOSED**

CHANGE IN RELATION TO PLANNING PERMISSION REF.2010/0945/P - INCREASED MANSARD ROOF PITCH, FACADE DETAILING AMENDMENTS  
 CHANGE IN RELATION TO APPROVED VARIATION SCHEME REF.2011/0405/P - INCREASED MANSARD ROOF PITCH, FACADE DETAILING AMENDMENTS, REINSTATED PARAPET

C	Minor amendments to front elevation,	26.10.11	LV	GP
B	Minor amendments to front elevation,	18.01.11	GM	RS
A	Alteration to the rear on first floor amended to match consented layout of No. 41	11.02.10	GM	RS

© KSR architects

  
**KSR**  
 architects

KSR architects  
 14 Greenleaf Street  
 London  
 NW1 0ND  
 t: +44 (0)20 7692 5000  
 f: +44 (0)20 7692 5050  
 www.ksr-architects.com

**Project:**  
 Proposed Alterations at  
 42 Queens Grove, NW8

**Title:**  
 PROPOSED ELEVATIONS

Date:	June 2009	Drawn by:	GM	Checked:	RS
Scale:	1:100 @ A1 / 1:200 @ A3				
Project Ref:	QGR	Drawing No:	QGR-P-03	Revised:	C