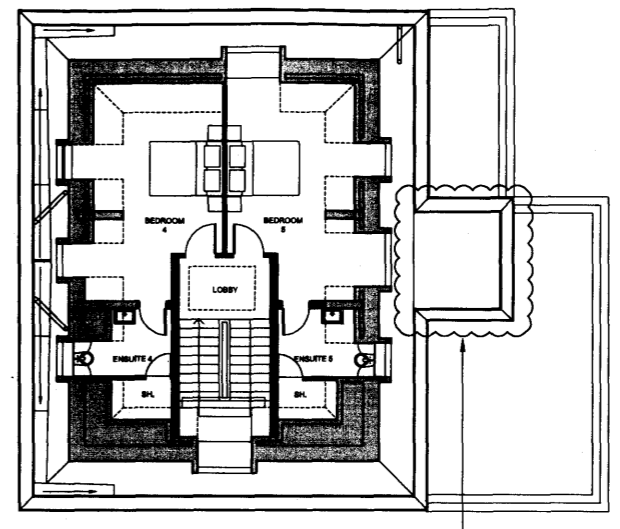
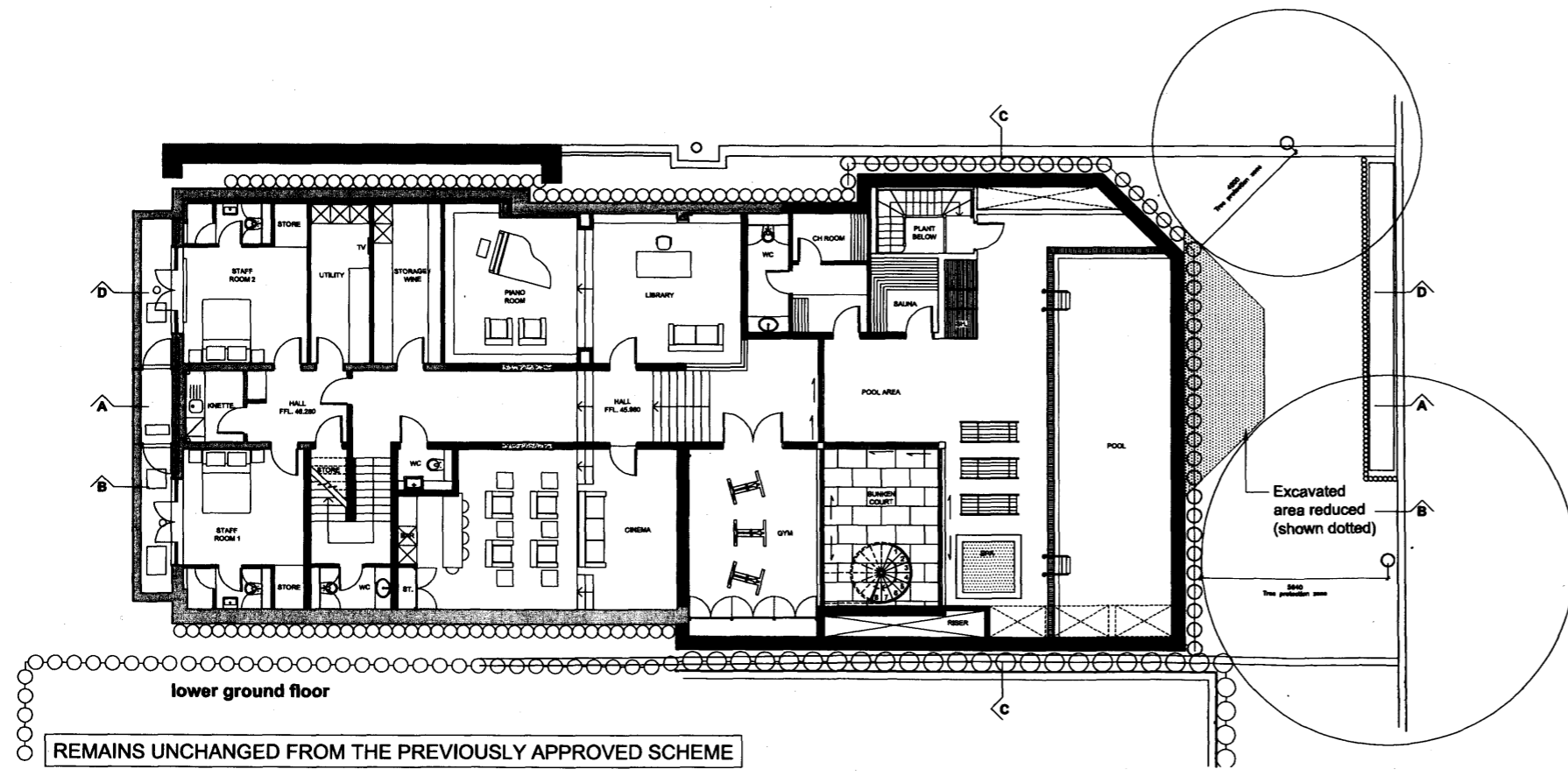


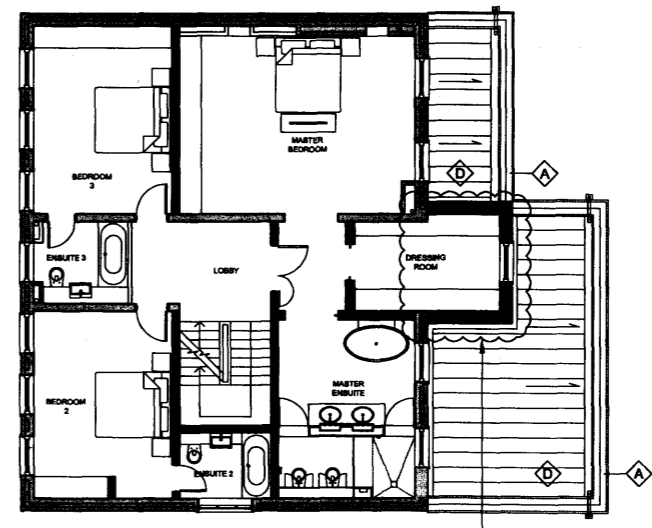
REMAINS UNCHANGED FROM THE PREVIOUSLY APPROVED SCHEME



second floor
AS PROPOSED
Extension added to rear elevation to match consented layout of No. 41



REMAINS UNCHANGED FROM THE PREVIOUSLY APPROVED SCHEME



first floor
AS PROPOSED
Extension added to rear elevation to match consented layout of No. 41

General notes:
This drawing is copyright of KSR architects. This drawing must be read in conjunction with the designers risk assessment, specification and all other relevant documentation and drawings. KSR architects accept no liability for any expense, loss or damage of whatsoever nature and however arising from any variation made to this drawing or in the execution of the work to which it relates which has not been referred to them and their approval obtained.
Do not scale from this drawing or the digital data, only figured dimensions are to be used. For Planning refer to linear scale.
Check all dimensions on site.

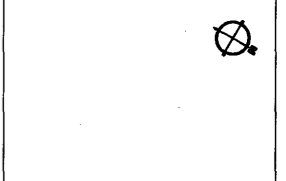
MATERIAL LEGEND:
A. STONE
B. BRICK TO MATCH EXISTING
C. TIMBER FRAME WINDOWS TO MATCH EXISTING
D. LED ROOF
E. GLAZED BALUSTRADE

RECEIVED
15 MAY 2010

D	Extension to the rear on First Floor amended to match consented layout of No. 41	11.02.10	GM	RS
E	Minor amendments to location of windows in Ground Floor. Extension added to the rear in First Floor. Top floor consent amended to be continuously. Space planning amendments.	04.04.09	GM	RS
F	Draw to rear of Ground Floor Plan amended.	18.02.09	GM	RS
A	Relocation of lightwell to rear elevation area in Basement included. Extension to the rear. Minor amendments to match window style.	24.11.08	GM	RS

Rev: Name: 06.11.11 By: GM

© KSR architects

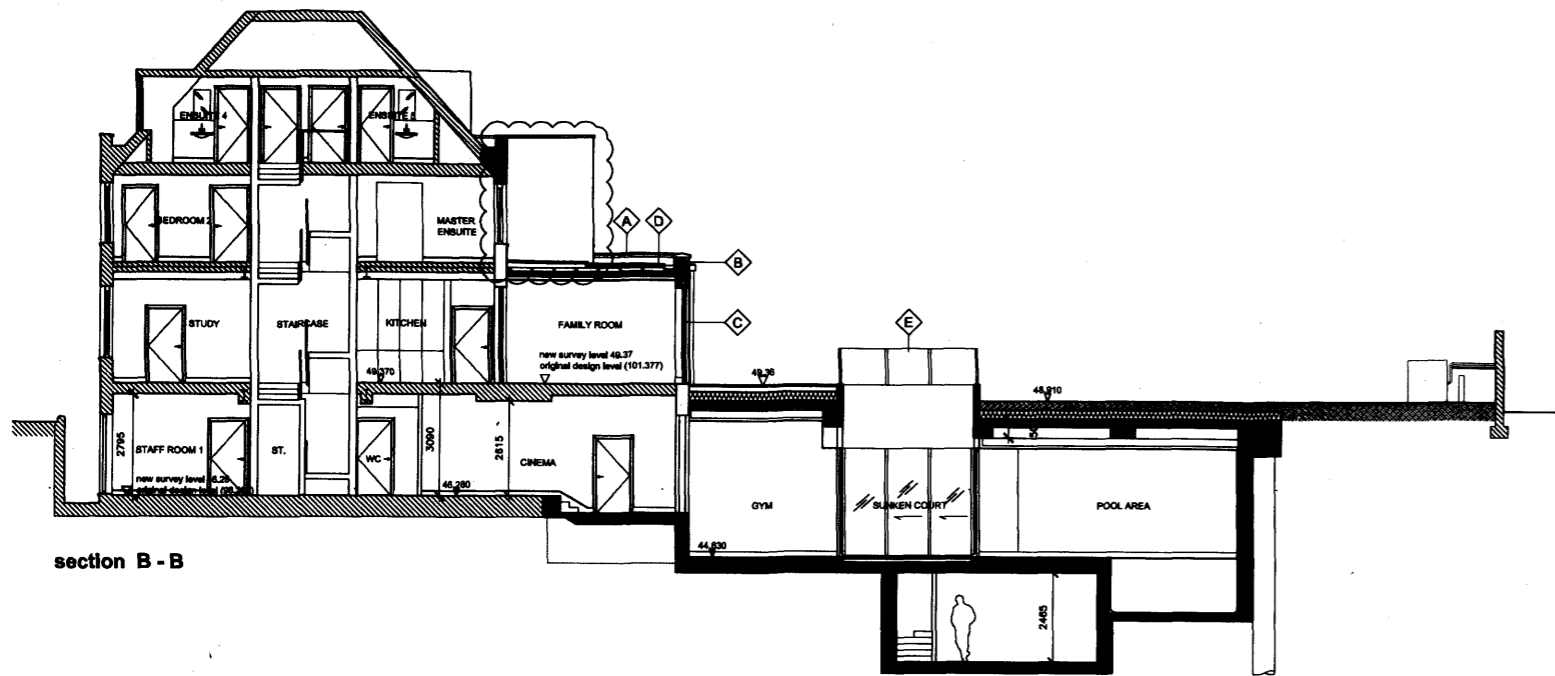


KSR architects
KSR architects
14 Overland Street
London
NW11 0ND
t: +44 (0)20 7862 6000
f: +44 (0)20 7862 6000
www.ksr-architects.com

Project: Proposed Alterations at 42 Queens Grove, NW8

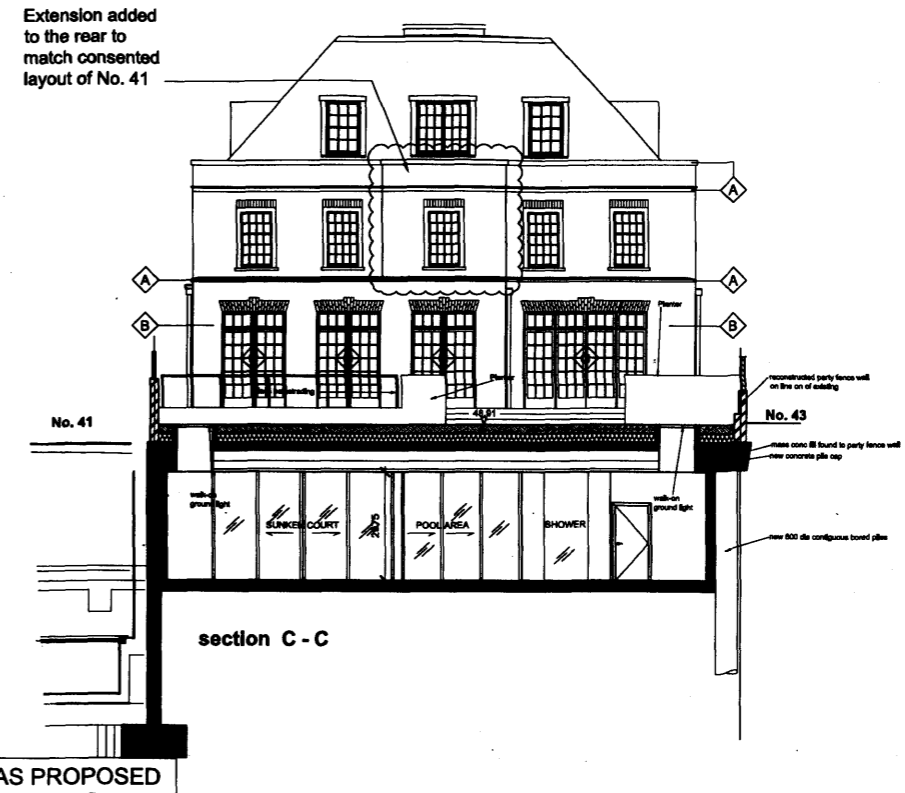
Title: Proposed Floor Plans

Date:	Oct 2008	Drawn by:	GM	Checked by:	RS
Scale:	1:100 @ A1 / 1:200 @ A3				
Project Ref:	QGR	Drawing No:	QGR-P-01	Revision:	D



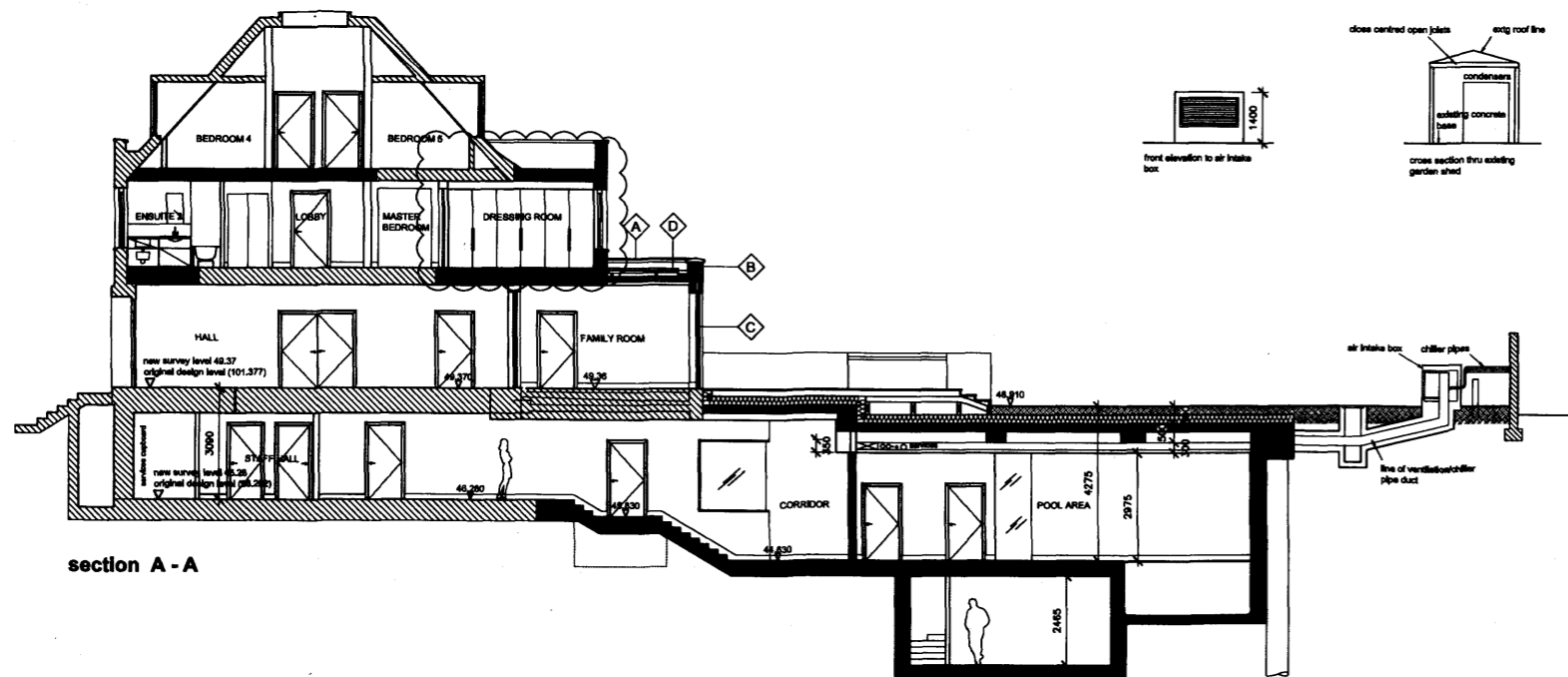
section B - B

AS PROPOSED



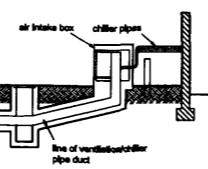
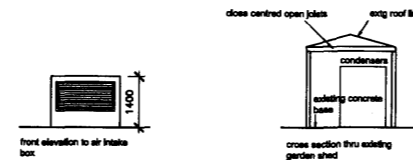
section C - C

AS PROPOSED



section A - A

AS PROPOSED



General notes:
 This drawing is copyright of KSR architects. This drawing must be read in conjunction with the designers risk assessment, specification and all other relevant documentation and drawings. KSR architects accept no liability for any expense, loss or damage of whatsoever nature and however arising from any variation made to this drawing or in the execution of the work to which it relates which has not been referred to them and their approval obtained.
 Do not scale from this drawing or the digital data, only figured dimensions are to be used. For Planning refer to linear scale. Check all dimensions on site.

MATERIAL LEGEND:
 A. STONE
 B. BRICK TO MATCH EXISTING
 C. TIMBER FRAME WINDOWS TO MATCH EXISTING
 D. LED ROOF
 E. GLAZED BALUSTRADE

RECEIVED

U J MAX ZUJ

D	Alteration to the rear on the first floor arranged to match consented layout of No. 41	11.02.10	GM	RS
C	Extension added to the rear on the first floor, 1st floor part arranged to run continuously	24.04.08	GM	RS
B	1st floor alterations	18.02.08	GM	RS
A	Design added to rear elevation. Occupier alterations added to entrance front and rear windows.	24.11.08	GM	RS

AS PROPOSED

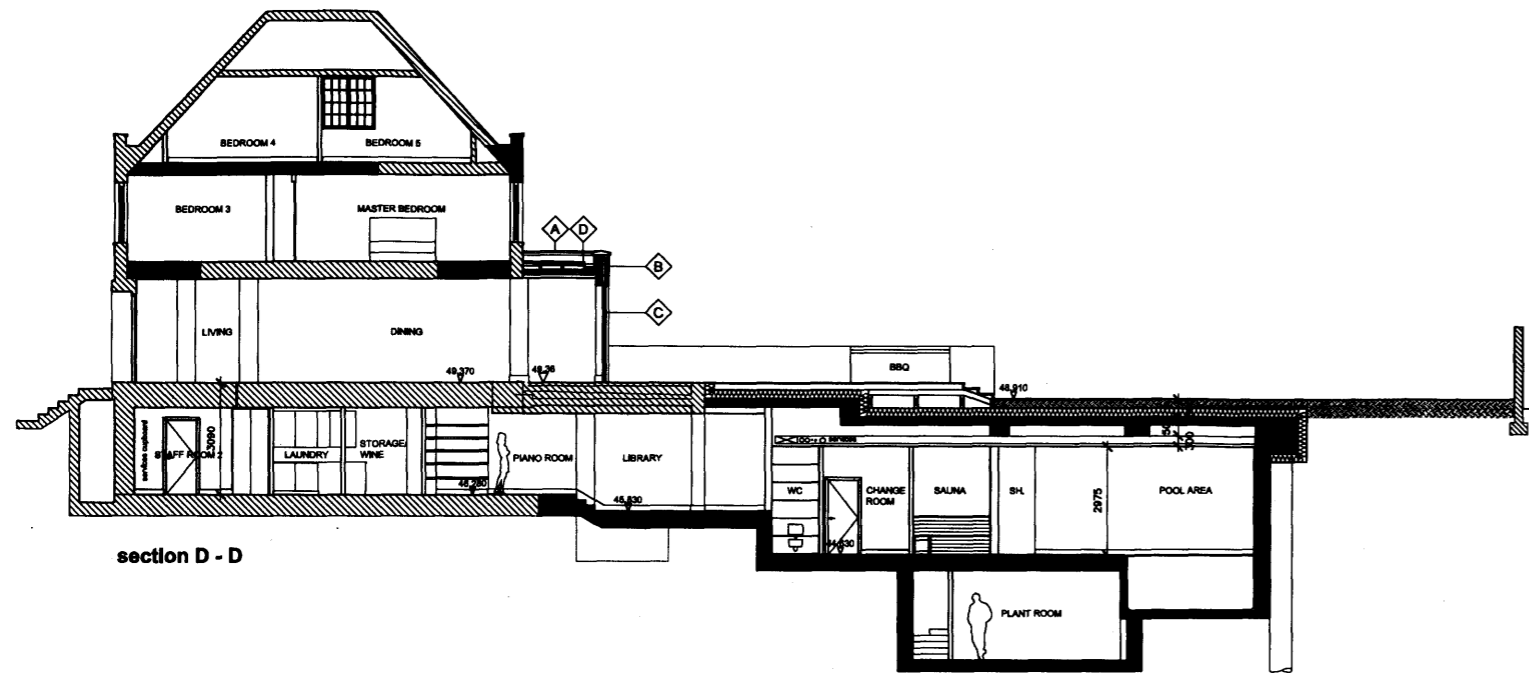


KSR architects
 KSR architects
 14 Greenland Street
 London
 NW1 0ND
 t +44 (0)20 7660 6000
 f +44 (0)20 7660 6000
 www.ksr-architects.com

Project: **Proposed Alterations at 42 Queens Grove, NWS**

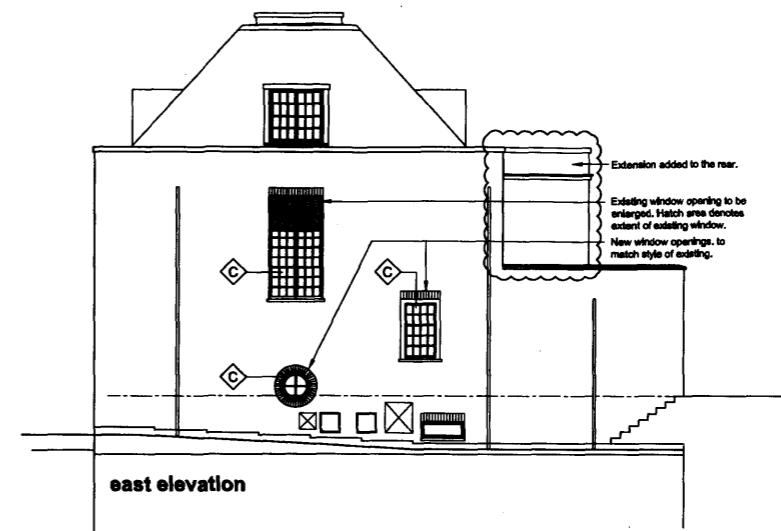
Title: **Proposed Sections**

Date:	Oct 2008	Drawn By:	GM	Checked:	RS
Scale:	1:100 @ A1 / 1:200 @ A3				
Project No.:	QGR	Drawing No.:	QGR-P-02	Revised:	D



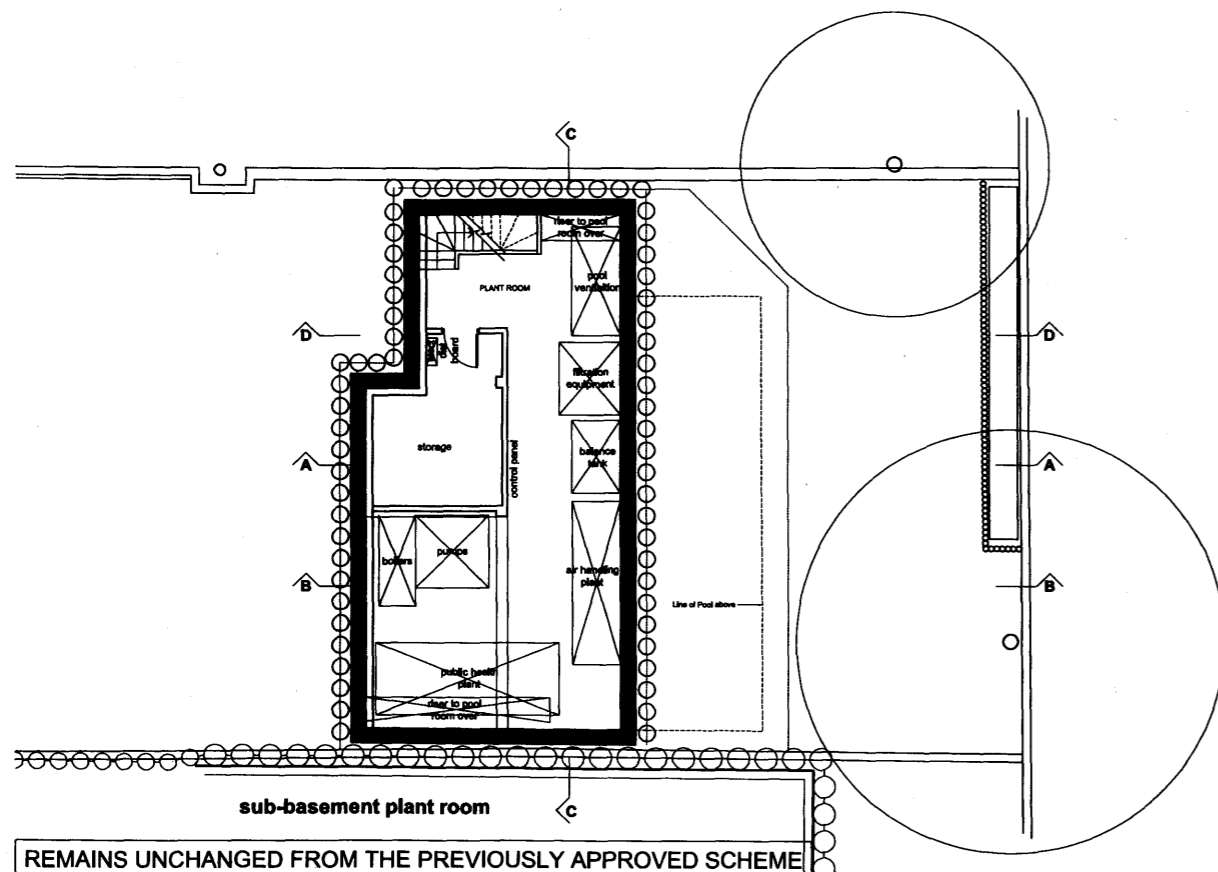
section D - D

REMAINS UNCHANGED FROM THE PREVIOUSLY APPROVED SCHEME



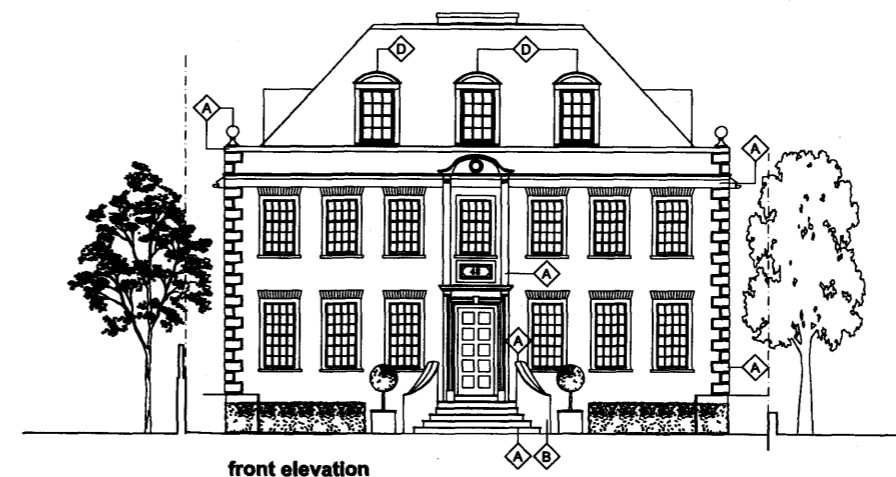
east elevation

AS PROPOSED



sub-basement plant room

REMAINS UNCHANGED FROM THE PREVIOUSLY APPROVED SCHEME



front elevation

REMAINS UNCHANGED FROM THE PREVIOUSLY APPROVED SCHEME

General notes:
 This drawing is copyright of KSR architects. This drawing must be read in conjunction with the designer's risk assessment, specification and all other relevant documentation and drawings. KSR architects accept no liability for any expenses, loss or damage of whatsoever nature and however arising from any variation made to this drawing or in the execution of the work to which it relates which has not been referred to them and their approval obtained. Do not scale from this drawing or the digital data. Only figured dimensions are to be used. For Planning refer to linear scale. Check all dimensions on site.

- MATERIAL LEGEND:**
 A. STONE
 B. BRICK TO MATCH EXISTING
 C. TIMBER FRAME WINDOWS TO MATCH EXISTING
 D. LED ROOF
 E. GLAZED BALUSTRADE

RECEIVED
 09 MAR 2010

C	Extension to the rear on first floor amended to match amended detail of No. 11	11.02.10	GM	RS
D	Extension added to the rear. Top floor parapet amendments.	24.04.08	GM	RS
A	Minor amendments	18.02.08	GM	RS

AS PROPOSED

KSR architects
 KSR architects
 14 Chandernagore Street
 London
 NW1 0ND
 T +44 (0)20 7892 0200
 F +44 (0)20 7892 0300
 www.ksr-architects.com

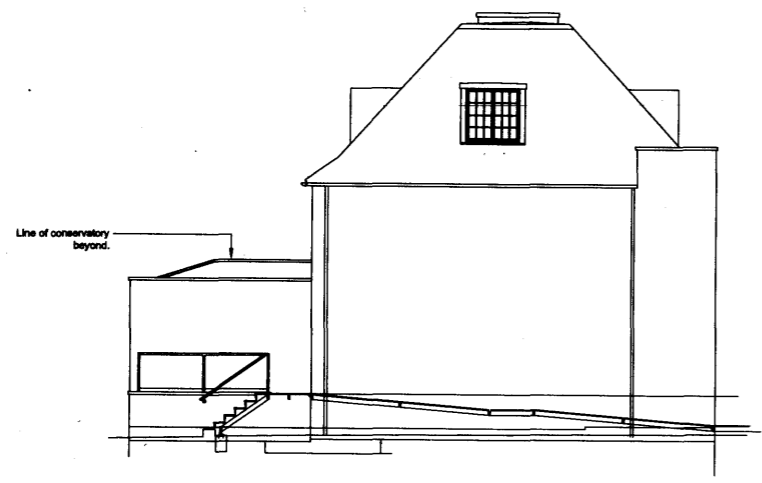
Project: Proposed Alterations at 42 Queens Grove, NWS

Title: Proposed Section D-D, Sub-Basement Plant Room, East & Front Elevation

Date:	Nov 2008	Drawn By:	GM	Checked By:	RS
Scale:	1:100 @ A1 / 1:200 @ A3				
Project Ref:	QGR	Drawing No:	QGR-P-06	Revised:	C

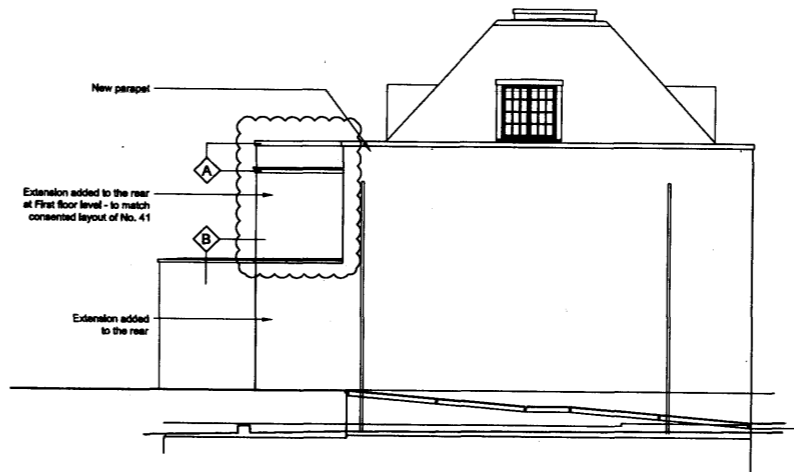
General notes:
 This drawing is copyright of KSR architects. This drawing must be read in conjunction with the design's risk assessment, specification and all other relevant documentation and drawings. KSR architects accept no liability for any expense, loss or damage of whatsoever nature and however arising from any variation made to this drawing or in the execution of the work to which it relates which has not been referred to them and their approval obtained.
 Do not scale from this drawing or the digital data, only figured dimensions are to be used. For Planning refer to finer scale.
 Check all dimensions on site.

MATERIAL LEGEND:
 A. STONE
 B. BRICK TO MATCH EXISTING
 C. TIMBER FRAME WINDOWS TO MATCH EXISTING
 D. LED ROOF
 E. GLAZED BALUSTRADE



west elevation - existing

AS EXISTING



west elevation - proposed

AS PROPOSED

RECEIVED
 03 MAY 2010

A	Extension to the rear on first floor amended to match amended layout of No. 41	11.02.10	GM	RS
Rev	Notes	Author	By	Check

© KSR architects



KSR
 architects

KSR architects
 14 Overland Street
 London
 NW1 0ND
 T +44 (0)20 7662 6000
 F +44 (0)20 7662 6000
 www.ksr-architects.com

Project: Proposed Alterations at 42 Queens Grove, NW8

Title: Existing and Proposed West Elevation

Date: June 2008 Drawn By: GM Checked: RS

Scale: 1:100 @ A1 / 1:200 @ A3

Project No: QGR Drawing No: QGR-P-07 Revision: A