



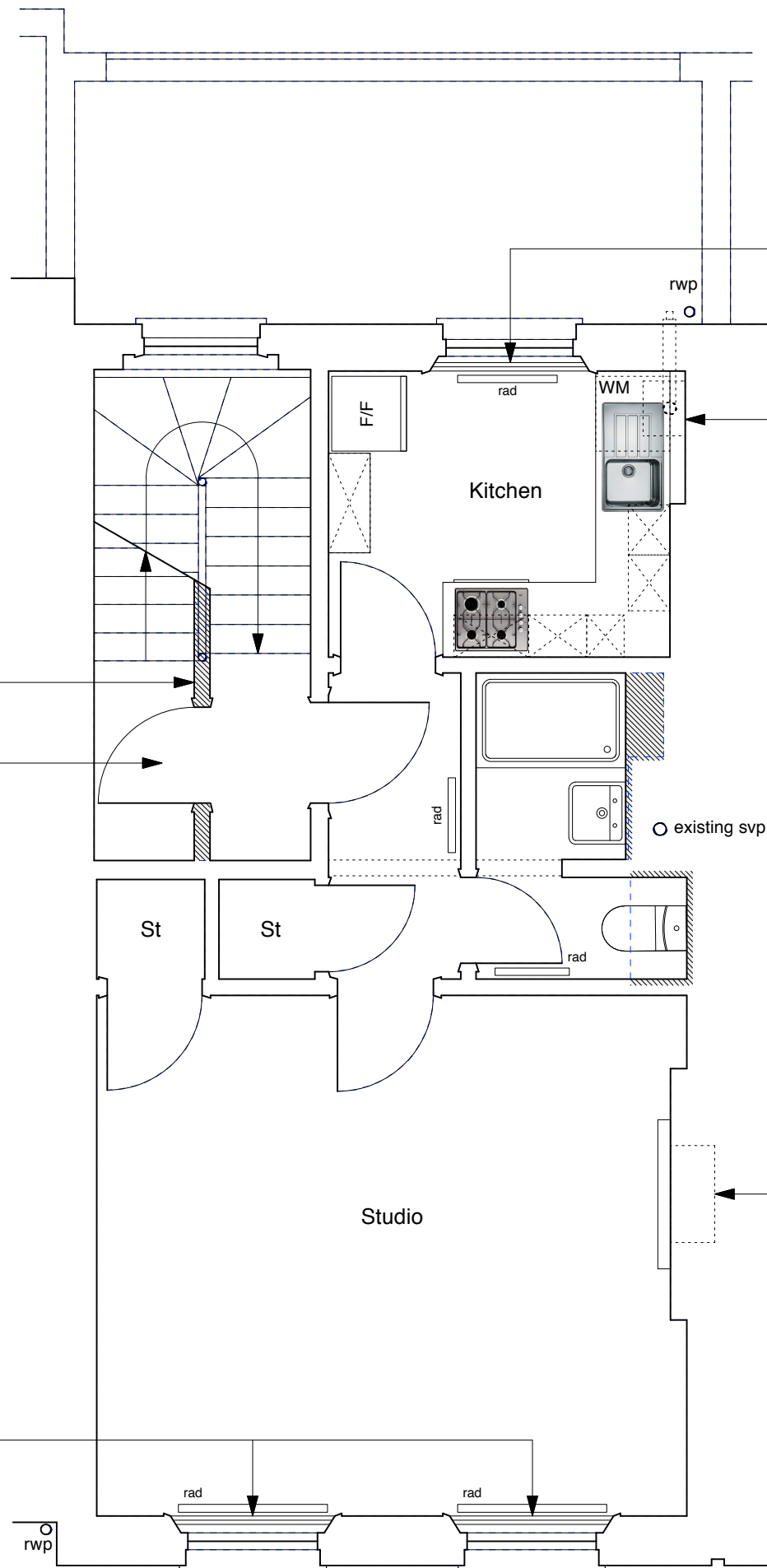


CONSTRUCTION KEY

-  existing retained
-  line over/under/behind
-  demolished
-  new construction



Selectaglaze secondary glazing system - see drawings 6214-FAC-D01 & D02

new condensing boiler (flue coloured black)

new studwork partitions (non loadbearing) finished with plasterboard, plain skirtings ex. 150mm high, flush timber fire doors, timber linings & ogee architraves, existing handrail retained and encapsulated within partition

new flat entrance door to third floor flat


existing svp

blocking to fireplace opening to be removed. new mantelpiece & surround with opening modified and hearth tiled (as drawing 6214-FAC-D101) with connection for electric fire.

Selectaglaze secondary glazing system - see drawings 6214-FAC-D01 & D02

NOTE:
 All ceiling plasterboard to be replaced throughout the second floor (1 hour fire resisting) on resilient bars.
 Remove fanlights above doors throughout flat.
 All internal doors renewed as solid timber flush fire doors.



	PROJECT 5 ARCHITECTURE LLP 8 Waterson Street London E2 8HL T: +44 (0)20 7739 9131 F: +44 (0)20 7739 3687 E: info@p5a.co.uk	job title 15 FREDERICK STREET, LONDON WC1X 0NF	scale 1:50 @ A3	drawn SA	drawing no. 6214-FS15-P04
	drawing SECOND FLOOR PLAN - PROPOSED	date JULY 2014	checked XX		