



26 FREDERICK STREET FRONT ELEVATION

Extract from "The National Heritage List for England" for 12-26 Frederick Street

No.26 3rd floor with paired pilaster strips rising to the top of the parapet and flanking a C20 window.
(Nos 12 & 18 3rd floors with paired pilasters flanking recessed sashes and carrying cornice and blocking course).

Paired pilasters with enriched capitals rise through 1st and 2nd floors to support a simplified entablature at 3rd floor level (no cornice).
 1st floor window with cast-iron balcony and tripartite sash.

2nd floor, recessed sash with sill band.

Rusticated stucco ground floor and plain stucco 1st floor sill bands. Square-headed doorway with panelled jamb, cornice-head, fanlight and panelled door.



12-26 FREDERICK STREET

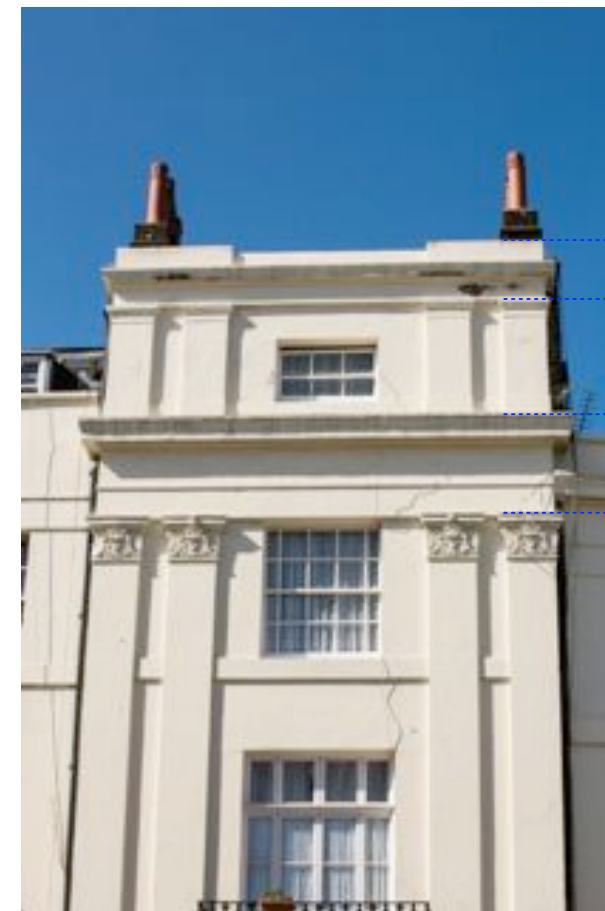


26 FREDERICK STREET - with incomplete entablature and missing cornice

LEGEND:

FS18-A : ORIGINAL CORNICE & BLOCKING COURSE
FS18-B : ORIGINAL ENTABLATURE

FS26-A : MISSING CORNICE & BLOCKING COURSE - TO BE RESTORED IN GLASS REINFORCED CONCRETE (PROFILE TO MATCH FS18-A)
FS26-B : INCOMPLETE ENTABLATURE - TO BE RESTORED IN GLASS REINFORCED CONCRETE (PROFILE TO MATCH FS18-B)



18 FREDERICK STREET

drawing no.		6214-FS26-P08	
drawn	SA	checked	XX
scale	1:50 @ A3	date	SEPT 2014
job title		26 FREDERICK STREET, LONDON WC1X 0ND	
drawing		PROPOSED RESTORED FRONT ELEVATION	
PROJECT 5 ARCHITECTURE LLP 8 Waterson Street London E2 8HL T: +44 (0)20 7739 9131 F: +44 (0)20 7739 9667 E: info@pjsa.co.uk			