

11a SHARPLESHALL STREET & 10 EGLON MEWS NW18YN

Planning condition no.18

planning permission ref: 2012/1328/P

AUGUST 2014

CHASSAY
+LAST ARCHITECTS

DRAWING LIST

PLANNING CONDITION NO.18

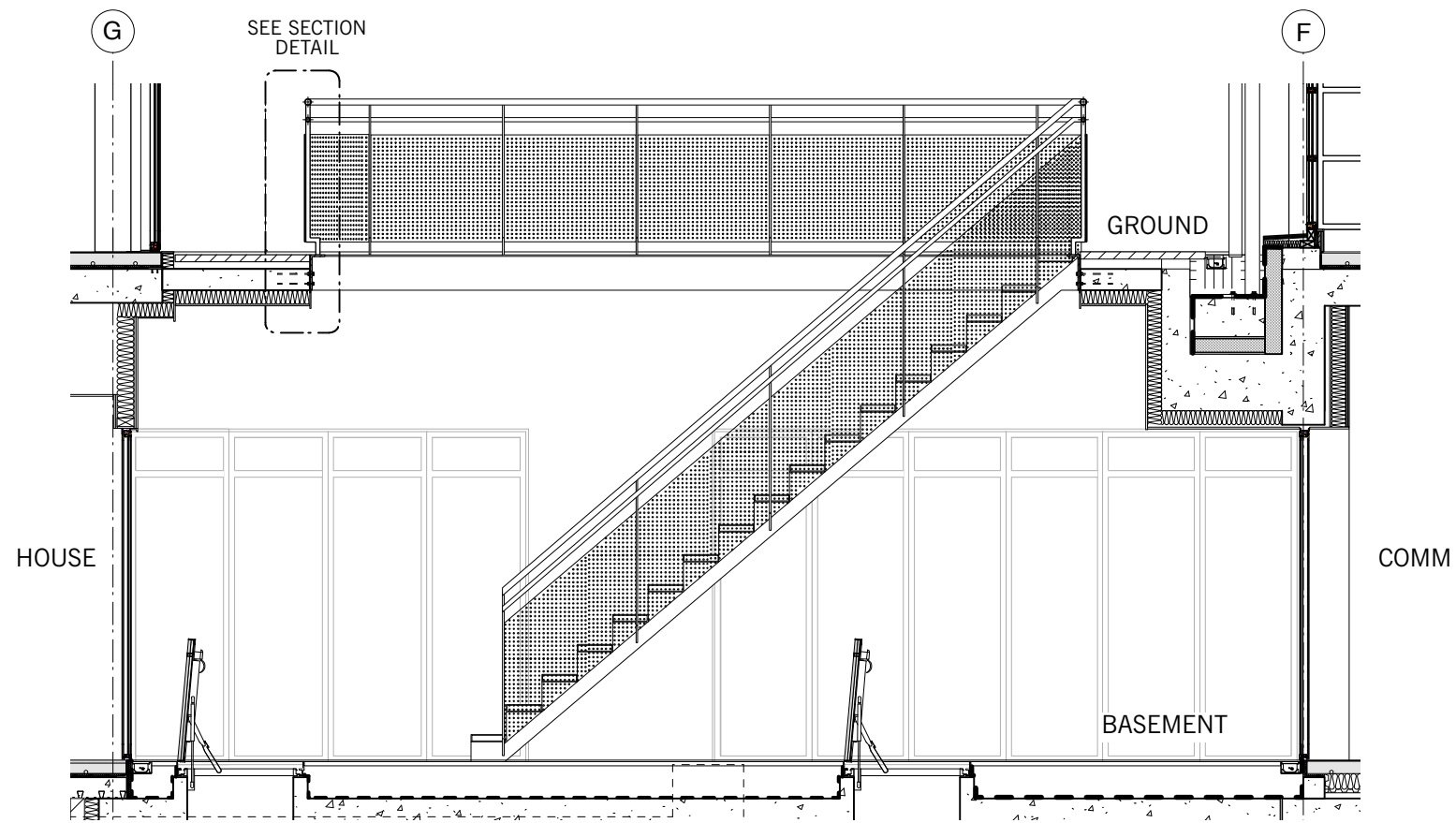
MS2/ PC/ E326 LIGHTWELL SECTION/ ELEVATION AA
SHOWING BALUSTRADE DETAILS

AUGUST 2014

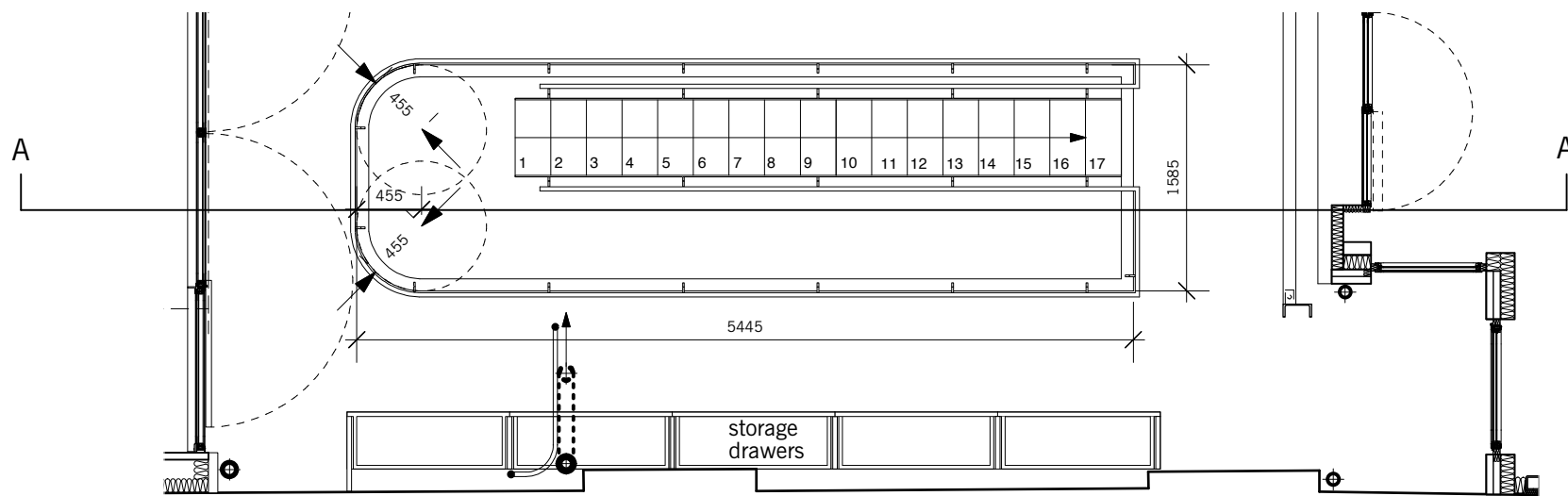
CHASSAY
+LAST ARCHITECTS

BERKELEY WORKS
BERKLEY GROVE
LONDON NW1 8XY

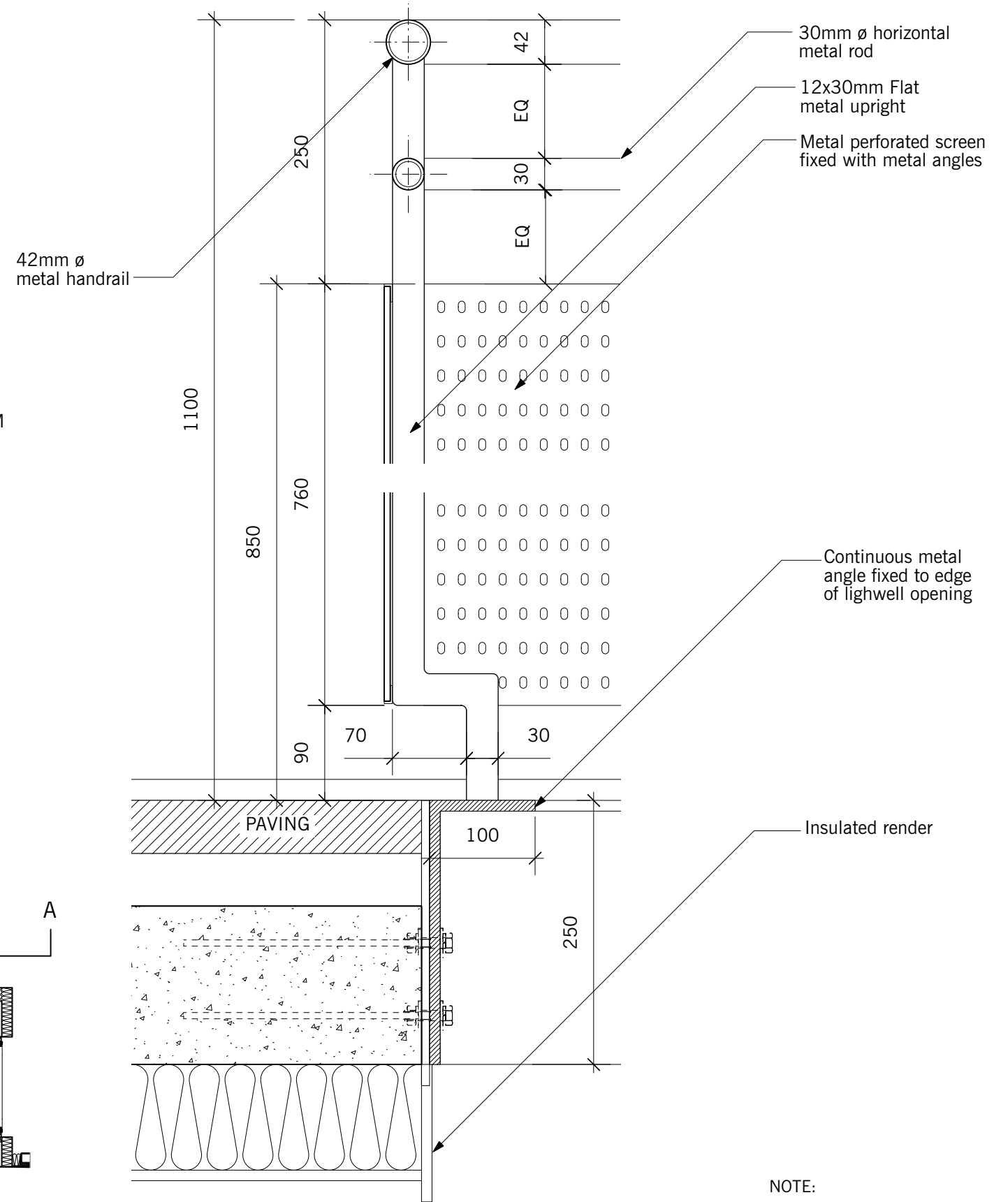
T.020 7483 7700
F.020 7483 7733
E.info@chassaylast.co.uk



1 Typical Balustrade Elevation
1:50@A3



2 Courtyard Level Plan
1:50@A3



3 Detail Section through Balustrade
1:5@A3

NOTE:
Metal balustrade and stair to have blacken steel finish by specialist fabricator

<p>DO NOT SCALE THIS DRAWING</p> <p>WRITTEN DIMENSIONS ONLY TO BE USED</p> <p>ALL DIMENSIONS ARE IN MILLIMETRES</p> <p>ALL DIMENSIONS TO BE VERIFIED ON SITE</p> <p>ANY INCONSISTENCIES TO BE REPORTED TO THE ARCHITECT IMMEDIATELY</p> <p>© CHASSAY + LAST ARCHITECTS</p>	<p>GENERAL NOTES:</p> <p>1) THIS DRAWING IS TO BE USED IN CONJUNCTION WITH ALL RELEVANT ARCHITECTS, ENGINEERS AND SPECIALISTS DRAWINGS AND DETAILS</p> <p>2) THIS DRAWING IS INTENDED TO DEFINE THE DESIGN PROFILES ONLY FOR THE EXTERNAL/INTERNAL APPEARANCE</p> <p>3) THE CONSTRUCTION SHOWN IS INDICATIVE ONLY</p> <p>4) THE CONTRACTOR SHOULD PROVIDE DESIGN PROPOSALS</p>	Date	Rev.	By	Description of change	Checked	status	PLANNING CONDITIONS	BERKELEY WORKS T.0207 483 7700	BERKLEY GROVE F. 0207 483 7733	LONDON NW18XY ISDN. 0207 483 7734	www.chassaylast.co.uk e-mail: info@chassaylast.co.uk	<p>CHASSAY LAST ARCHITECTS</p>			
		-	-	-	-	-	-	-	10 EGLON MEWS PRIMROSE HILL	title LIGHTWELL SECTION/ELEVATION AA - SHOWING BALUSTRADE DETAILS	drawn by AS	checked by JG		date 02/14	scale 1:50, 1:5@A3	MS2/ PC/ E326
		-	-	-	-	-	-	-	LONDON NW1 8YN							rev -
		-	-	-	-	-	-	-								