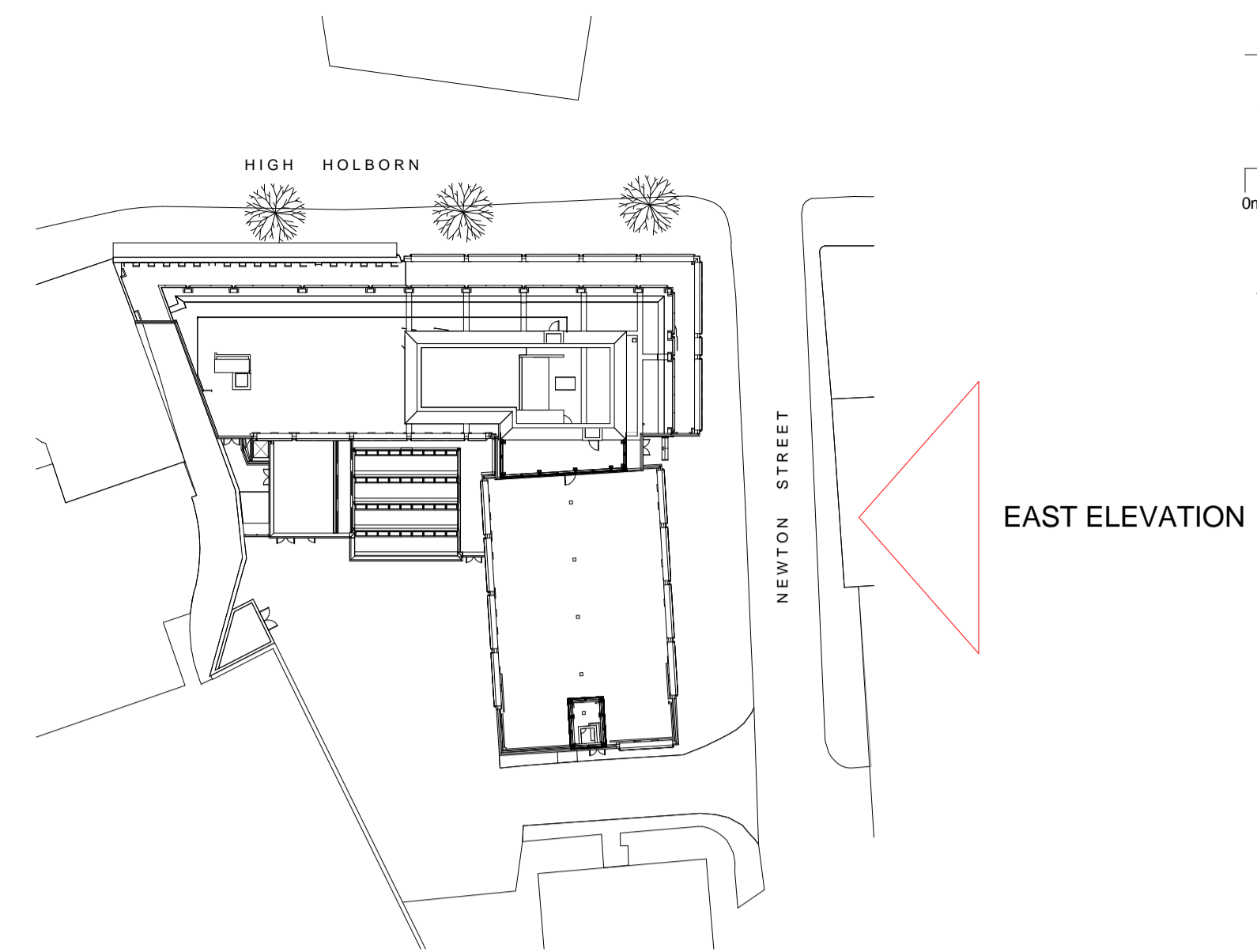


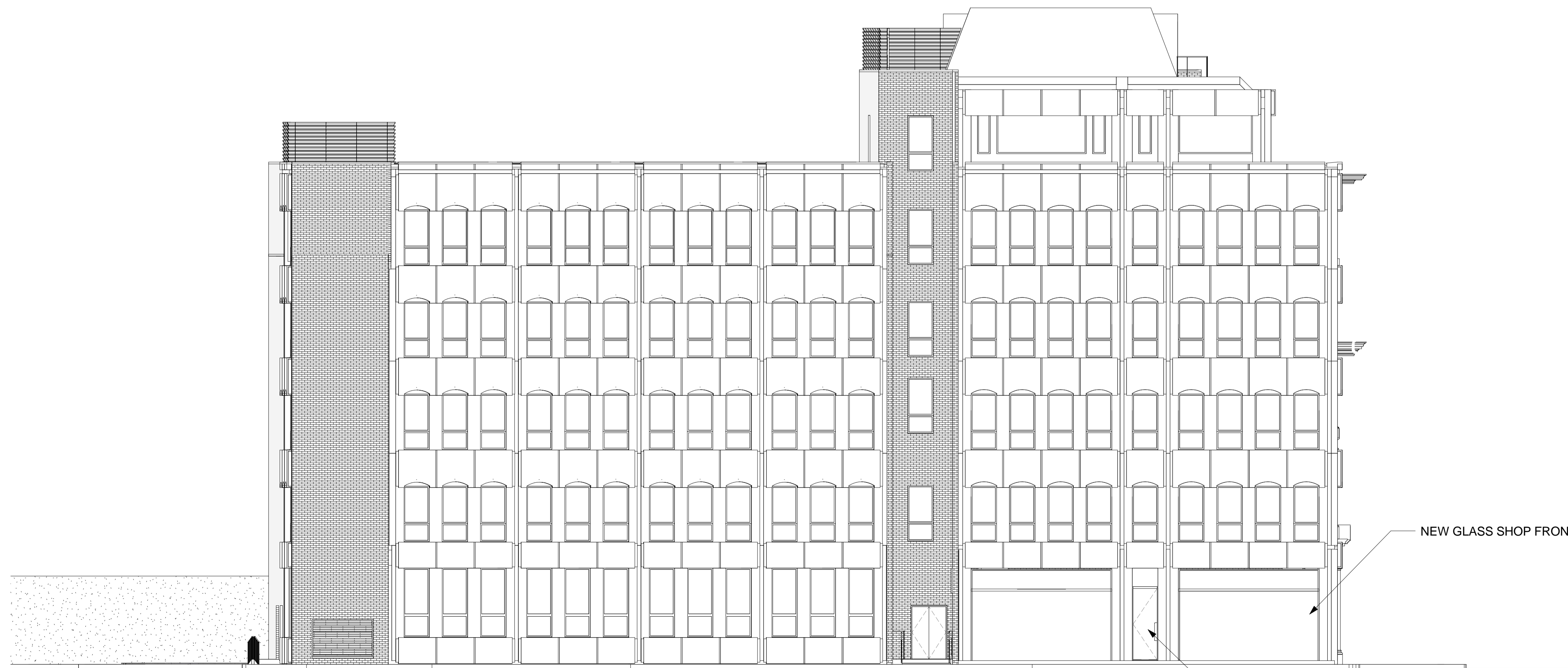
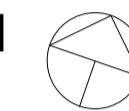
Responsibility is not accepted for errors made by others in scaling from this drawing. All construction information should be taken from figured dimensions only.

0mm 50mm 100mm

**A1** Original Sheet Size



RETAIL - EAST ELEV KEY PLAN  
1 : 500



RETAIL UNIT - EAST ELEVATION (PROPOSED)  
1 : 100

NEWTON STREET

NEW NEWTON STREET SHOP ENTRANCE

NEW GLASS SHOP FRONT

date	rev	name	chk	note
19/06/2014	D	NBH	AB	Amendments to Coffee shop
09/05/2014	C	SH	AB	Omitting of notes
08/04/2014	B	NBH	AB	Amended according to Planning Consultants comments
26/02/2014	A	NBH	AB	Information added

© Stride Treglown Limited 2012.

**Stride Treglown**

Architecture Town Planning Interior Design Building Surveying Landscape Design Graphic Design  
3 Cosser Street, London, SE1 7BU  
T 020 7401 0700 F 020 7401 0701 www.stridetreglown.co.uk

PROJECT  
HOXTON HOTEL HOLBORN  
199-206 HIGH HOLBORN  
LONDON WC1V 7BU

DRAWING TITLE  
RETAIL UNIT - EAST ELEVATION  
(PROPOSED)

STATUS  
PLANNING

SCALE DATE DRAWN BY CHECKED BY  
As indicated 14/02/2014 NBH AB

PROJECT NUMBER DRAWING NUMBER REVISION  
20918 AP(00)9014 D

C:\Revl\Local\20918\_HH\_CONSTRUCTION\_2013\_Nik\_Hoggarth.rvt 30/06/2014 16:14:50