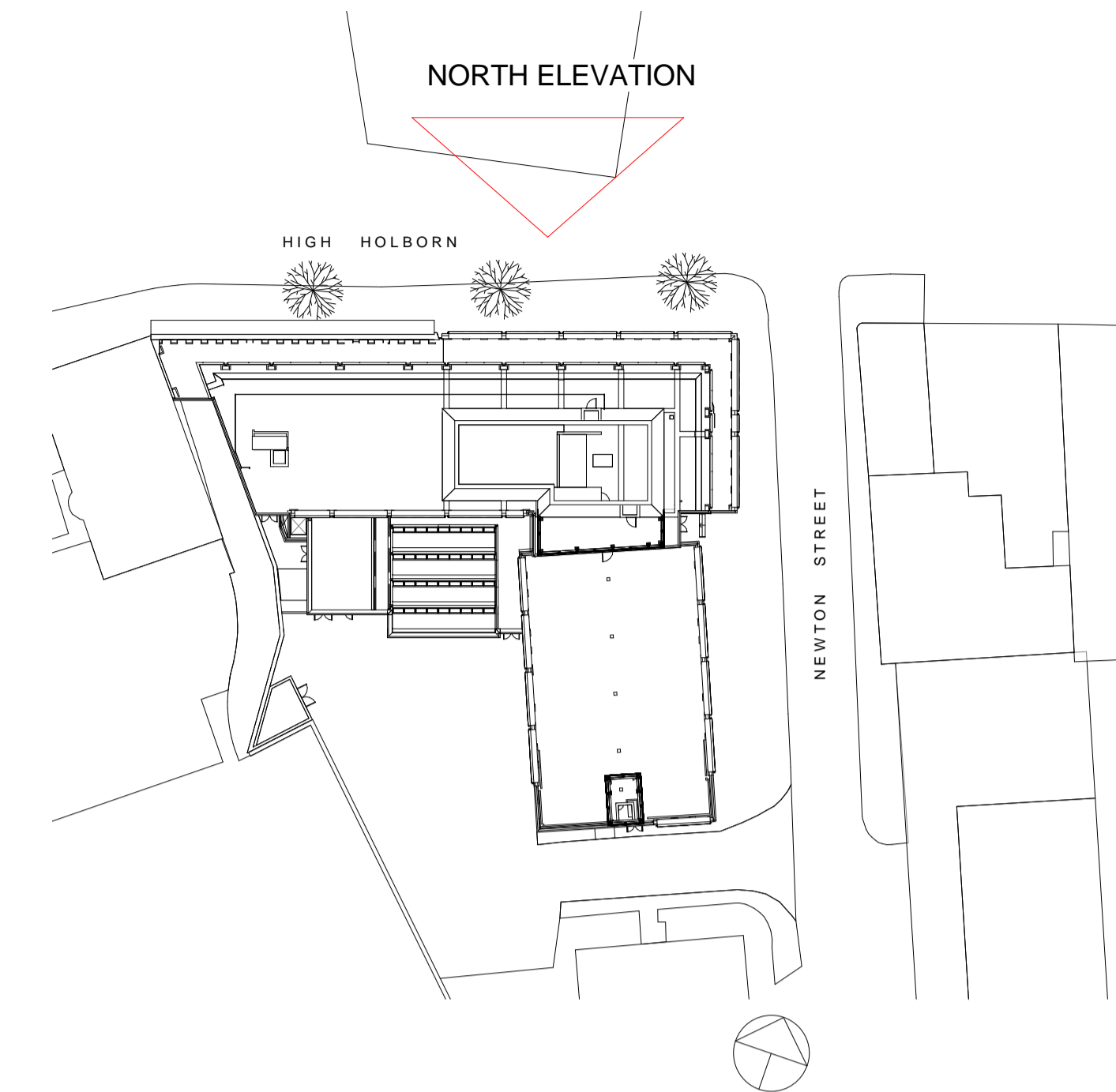


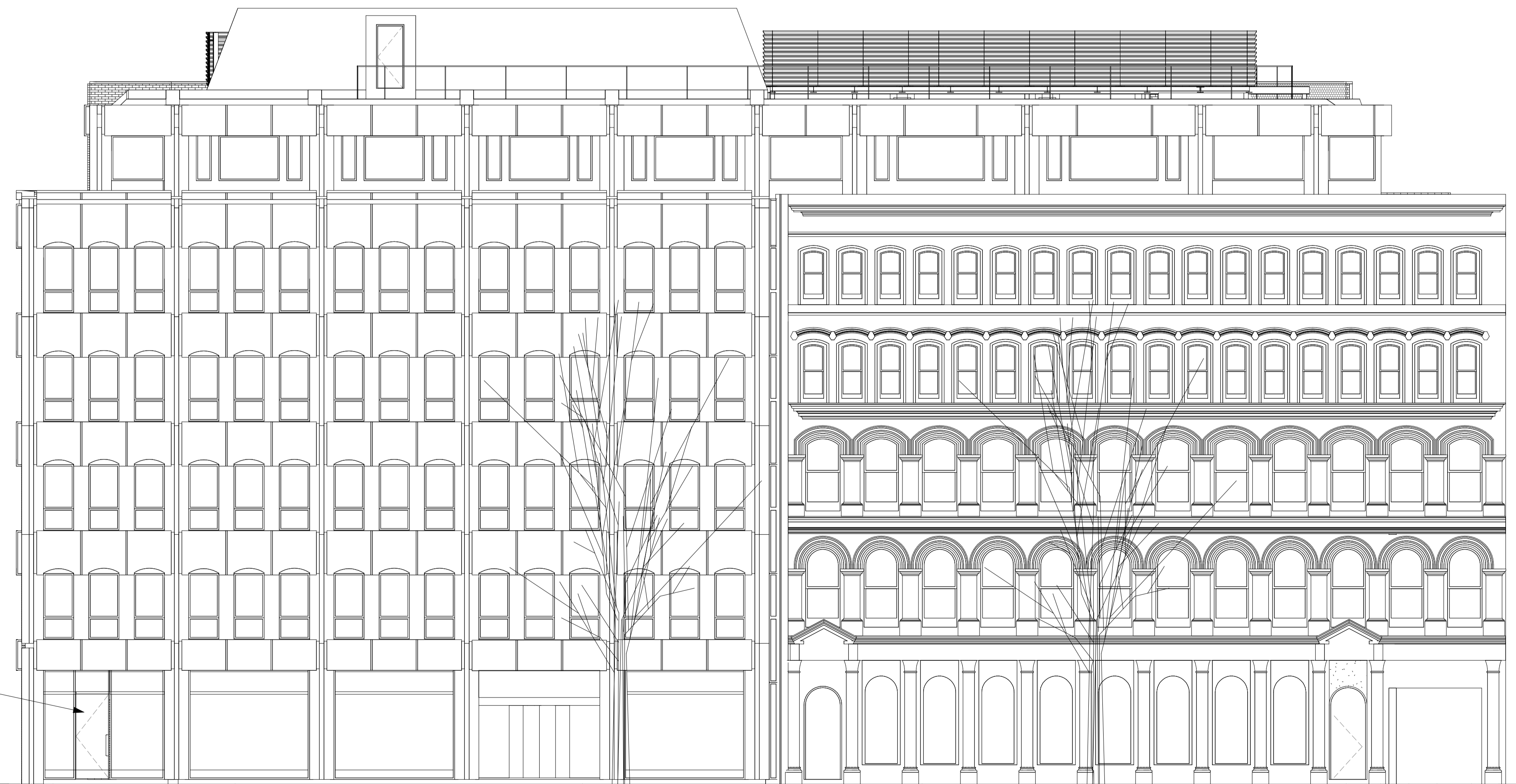
Responsibility is not accepted for errors made by others in scaling from this drawing. All construction information should be taken from figured dimensions only.

0mm 50mm 100mm

**A1** Original Sheet Size



RETAIL - NORTH ELEV KEY PLAN  
1 : 500



NEW GLAZED SHOP FRONT - GLASS ENTRANCE DOOR FROM HIGH HOLBORN - MATERIALS TO MATCH EXISTING

RETAIL UNIT - NORTH ELEVATION (PROPOSED)  
1 : 100

HIGH HOLBORN

date	rev	name	chk	note
30/06/2014	G	NBH	AB	Entrances amended
23/06/2014	F	NBH	AB	Minor Amendments
19/06/2014	E	NBH	AB	Amendments to Coffee shop
09/05/2014	D	SH	AB	Omitting of notes
14/04/2014	C	NBH	AB	Amendments according to planning consultants comments
09/04/2014	B	NBH	AB	Amended according to Planning Consultants comments
26/02/2014	A	NBH	AB	Information added

© Stride Treglown Limited 2012.

**Stride Treglown**

Architecture Town Planning Interior Design Building Surveying Landscape Design Graphic Design  
3 Cosser Street, London, SE1 7BU  
T 020 7401 0700 F 020 7401 0701 www.stridetreglown.co.uk

PROJECT  
HOXTON HOTEL HOLBORN  
199-206 HIGH HOLBORN  
LONDON WC1V 7BU

DRAWING TITLE  
RETAIL UNIT - NORTH ELEVATION (PROPOSED)

STATUS  
PLANNING

SCALE	DATE	DRAWN BY	CHECKED BY
As indicated	14/02/2014	NBH	AB
PROJECT NUMBER	DRAWING NUMBER	REVISION	
20918	AP(00)9013	G	

C:\Revit\Local\20918\_HH\_CONSTRUCTION\_2013\_Nik\_Hogarth.rvt 30/06/2014 16:13:51