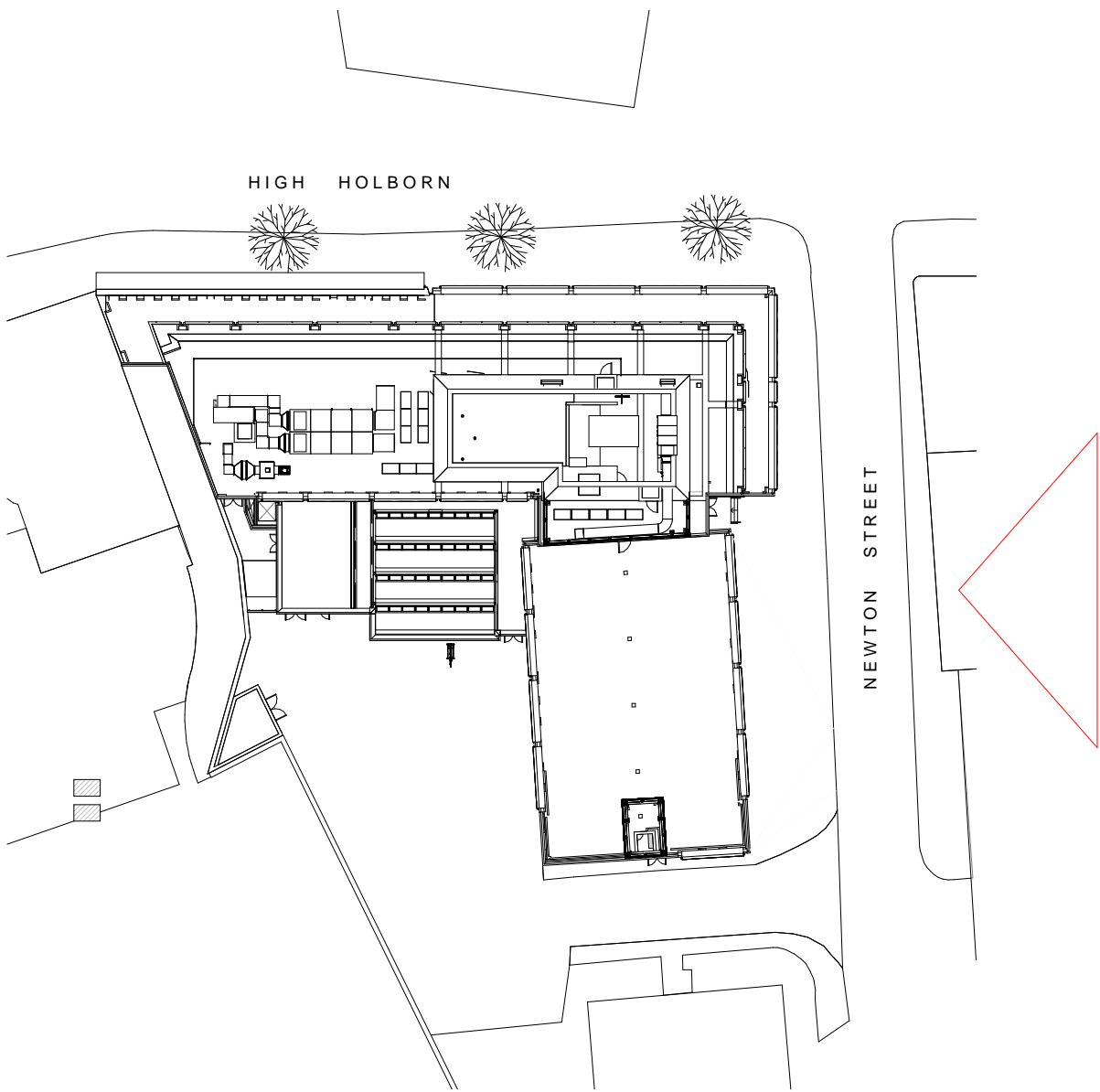


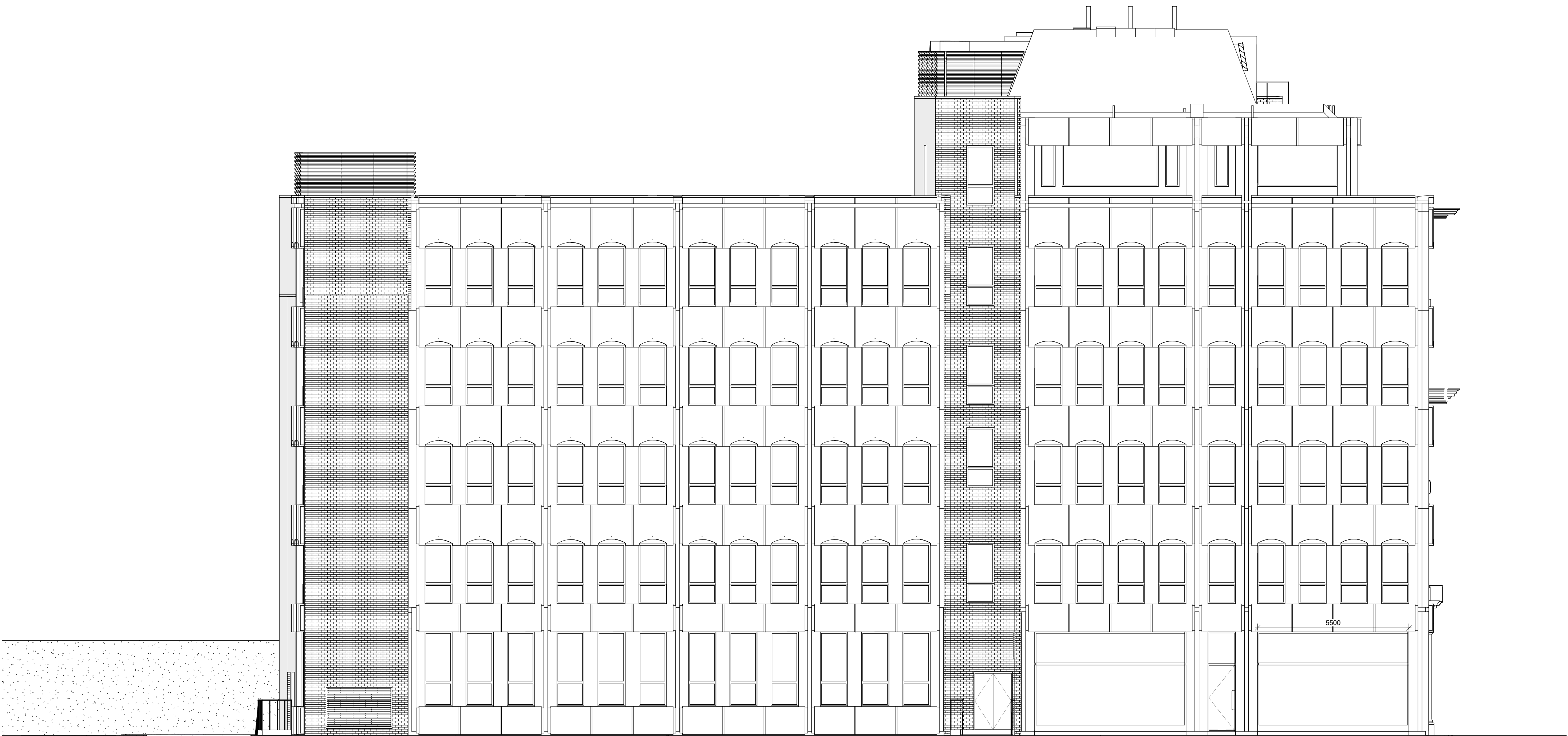
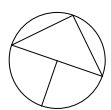
Responsibility is not accepted for errors made by others in scaling from this drawing. All construction information should be taken from figured dimensions only.

0mm 50mm 100mm

A1 Original Sheet Size



RETAIL - EAST ELEV KEY PLAN
1 : 500



RETAIL UNIT - EAST ELEVATION (PROPOSED)
1 : 100

NEWTON STREET

30/09/2014	G	NBH	AB	Transom repositioned
29/09/2014	F	NBH	AB	Transoms removed
16/07/2014	E	NBH	AB	updated according to clients comments
19/06/2014	D	NBH	AB	Amendments to Coffee shop
09/05/2014	C	SH	AB	Omitting of notes
08/04/2014	B	NBH	AB	Amended according to Planning Consultants comments
26/02/2014	A	NBH	AB	Information added
date	rev	name	chk	note

© Stride Treglown Limited 2012.

 **Stride Treglown**

Architecture Town Planning Interior Design Building Surveying Landscape Design Graphic Design
3 Cosser Street, London, SE1 7BU
T 020 7401 0700 F 020 7401 0701 www.stridetreglown.co.uk

PROJECT
HOXTON HOTEL HOLBORN
199-206 HIGH HOLBORN
LONDON WC1V 7BU

DRAWING TITLE
RETAIL UNIT - EAST ELEVATION
(PROPOSED)

STATUS
PLANNING

SCALE	DATE	DRAWN BY	CHECKED BY
As indicated	14/02/2014	NBH	AB
PROJECT NUMBER	DRAWING NUMBER	REVISION	
20918	AP(00)9014	G	

C:\Revl Local\20918_HH_CONSTRUCTION_2013_Nik Hoggarth.rvt 30/09/2014 09:41:41