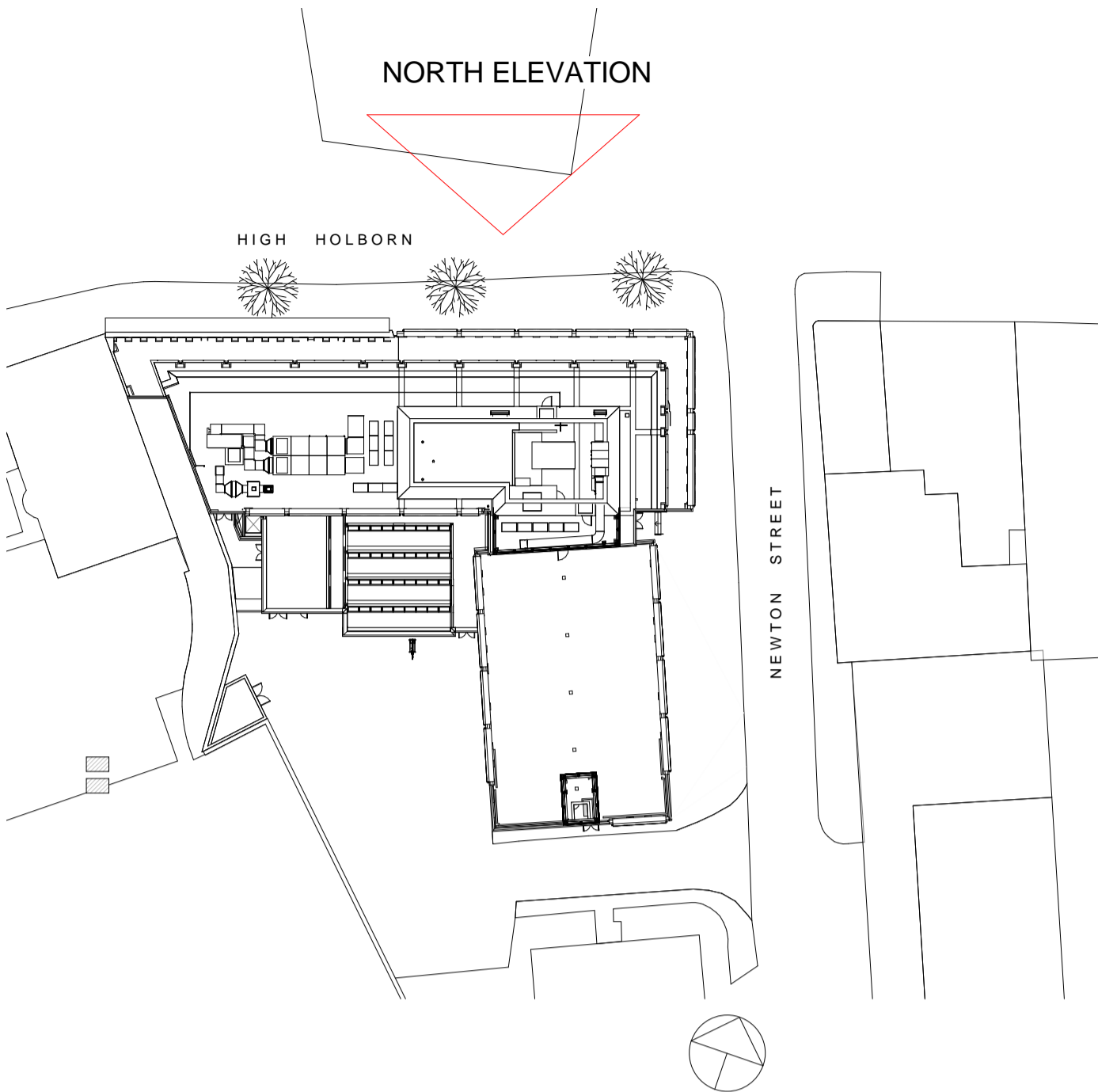


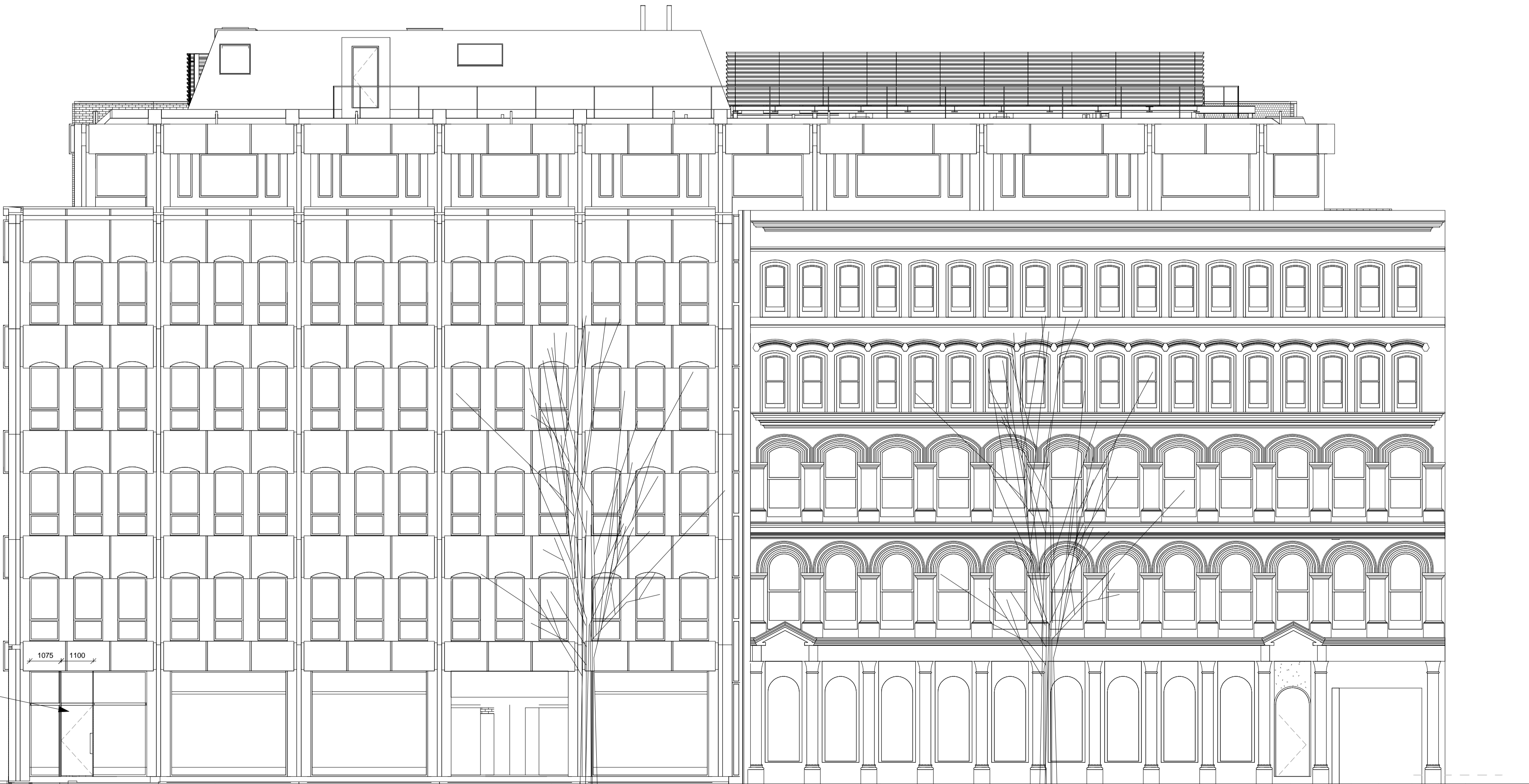
Responsibility is not accepted for errors made by others in scaling from this drawing. All construction information should be taken from figured dimensions only.

0mm 50mm 100mm

A1 Original Sheet Size



RETAIL - NORTH ELEV KEY PLAN  
1 : 500



NEW GLAZED SHOP  
FRONT - GLASS  
ENTRANCE DOOR  
FROM HIGH HOLBORN -  
MATERIALS TO MATCH  
EXISTING

RETAIL UNIT - NORTH ELEVATION (PROPOSED)  
1 : 100

HIGH HOLBORN

29/09/2014	I	NBH	AB	Transoms amended
16/07/2014	H	NBH	AB	updated according to clients comments
30/06/2014	G	NBH	AB	Entrances amended
23/06/2014	F	NBH	AB	Minor Amendments
19/06/2014	E	NBH	AB	Amendments to Coffee shop
09/05/2014	D	SH	AB	Omitting of notes
14/04/2014	C	NBH	AB	Amendments according to planning consultants comments
08/04/2014	B	NBH	AB	Amended according to Planning Consultants comments
26/02/2014	A	NBH	AB	Information added
date	rev	name	chk	note

© Stride Treglown Limited 2012.

 **Stride Treglown**

Architecture Town Planning Interior Design Building Surveying Landscape Design Graphic Design  
3 Cosser Street, London, SE1 7BU  
T 020 7401 0700 F 020 7401 0701 www.stridetreglown.co.uk

PROJECT  
HOXTON HOTEL HOLBORN  
199-206 HIGH HOLBORN  
LONDON WC1V 7BU

DRAWING TITLE  
RETAIL UNIT - NORTH ELEVATION  
(PROPOSED)

STATUS  
PLANNING

SCALE	DATE	DRAWN BY	CHECKED BY
As indicated	14/02/2014	NBH	AB
PROJECT NUMBER	DRAWING NUMBER	REVISION	
20918	AP(00)9013	I	

C:\Revi\Local\20918\_HH\_CONSTRUCTION\_2013\_Nik Hoggarth.rvt 29/09/2014 16:26:28