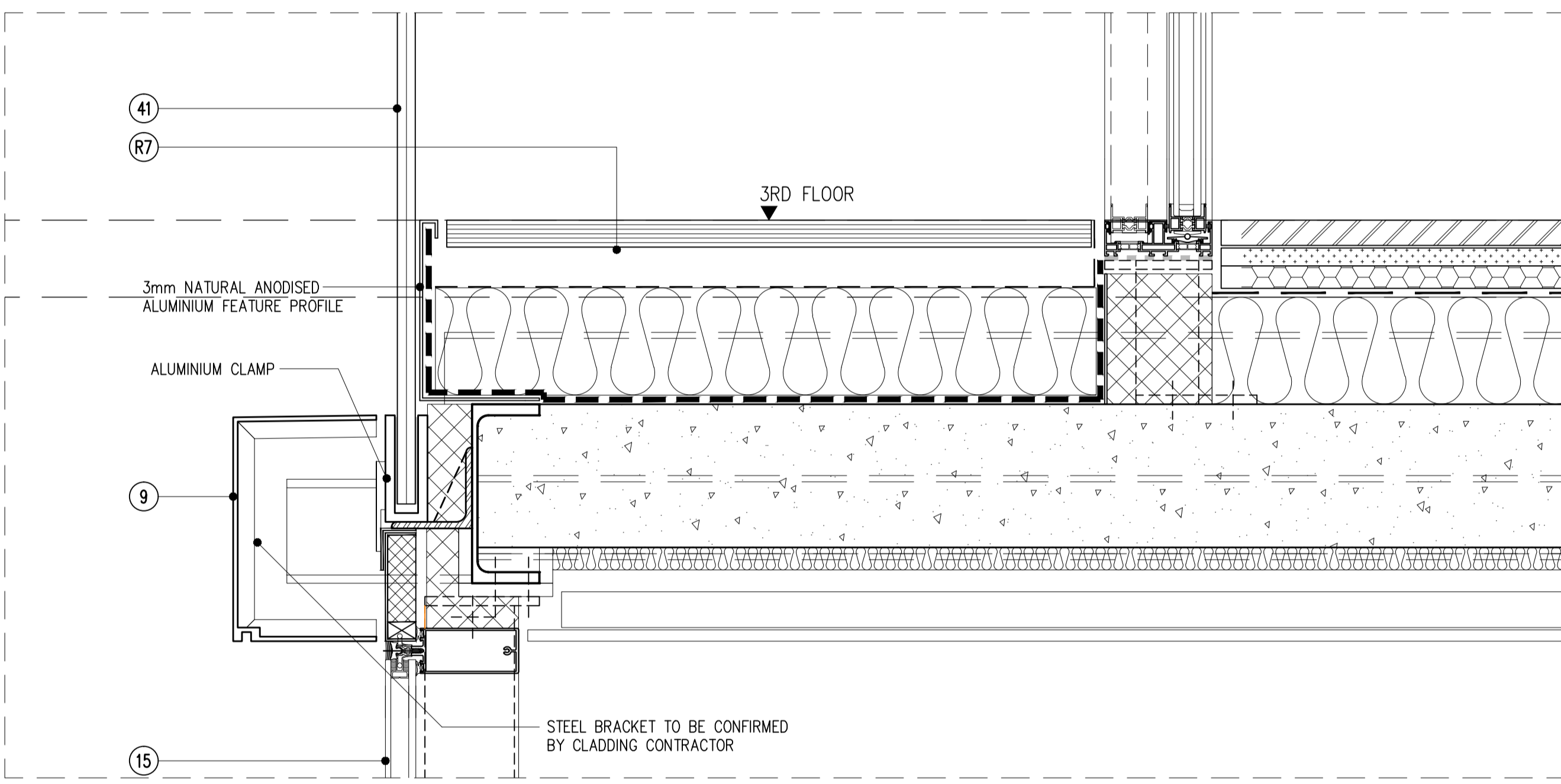
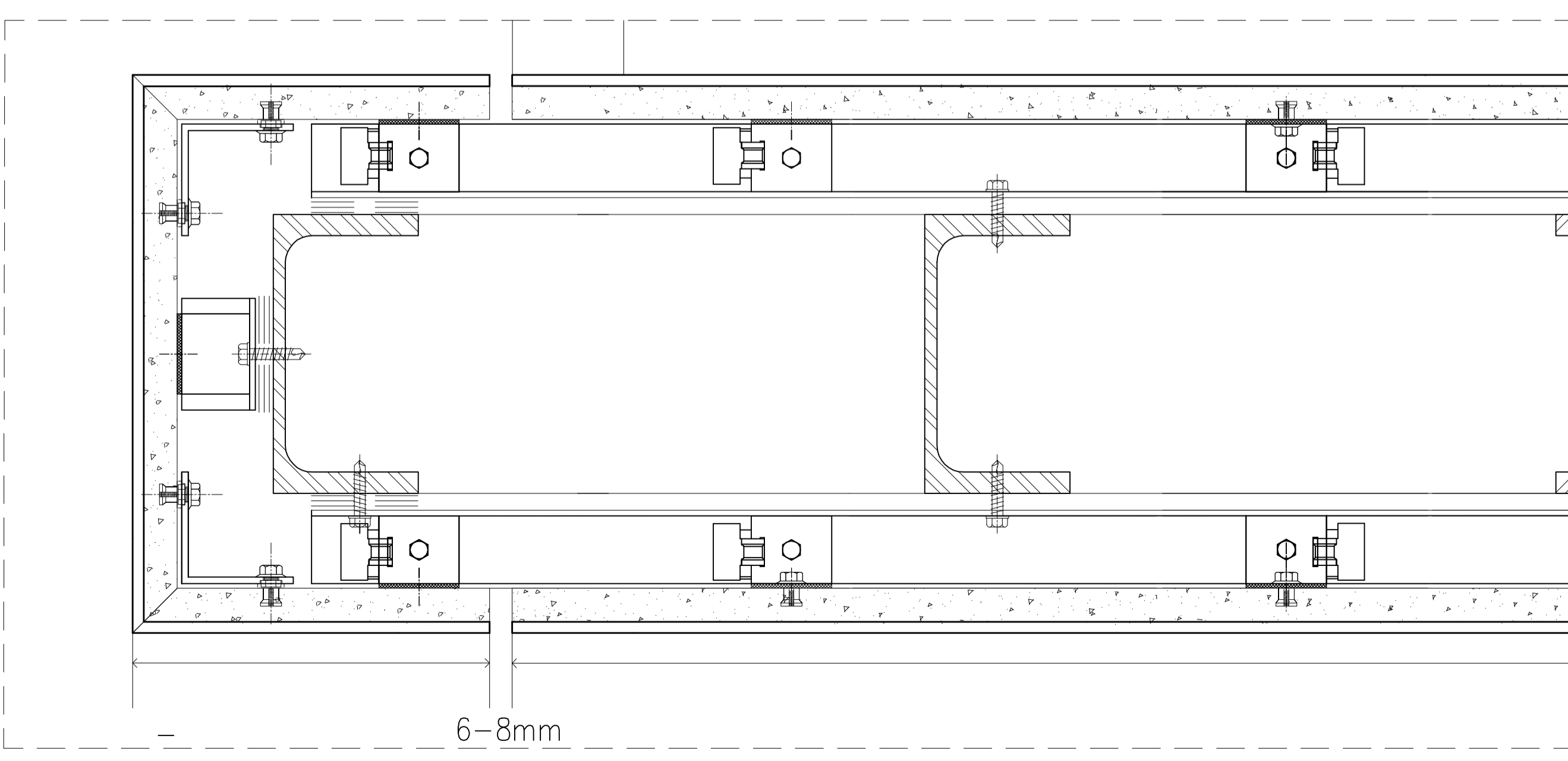


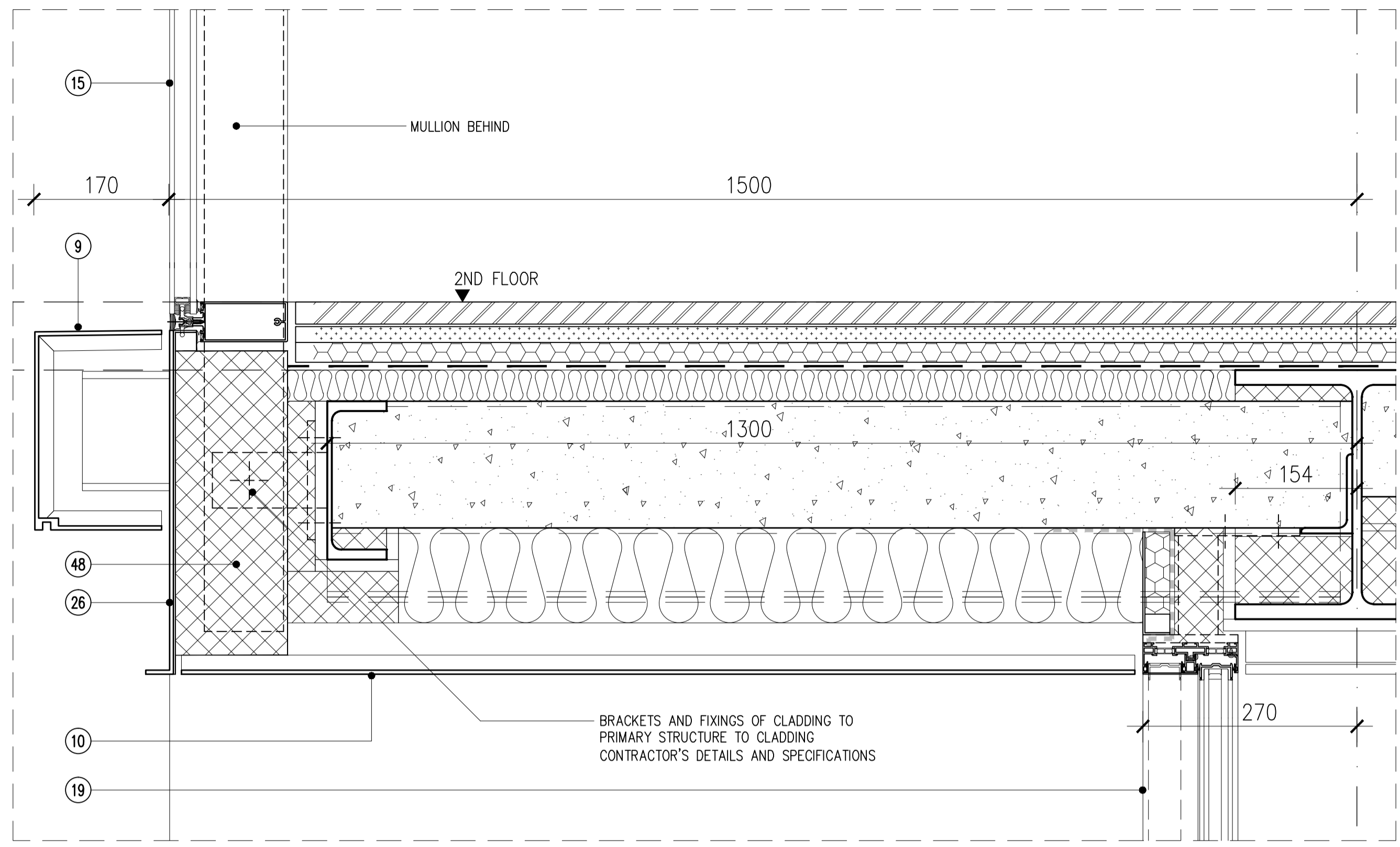
04 DETAIL SECTION
SCALE: 1:5 (A1)



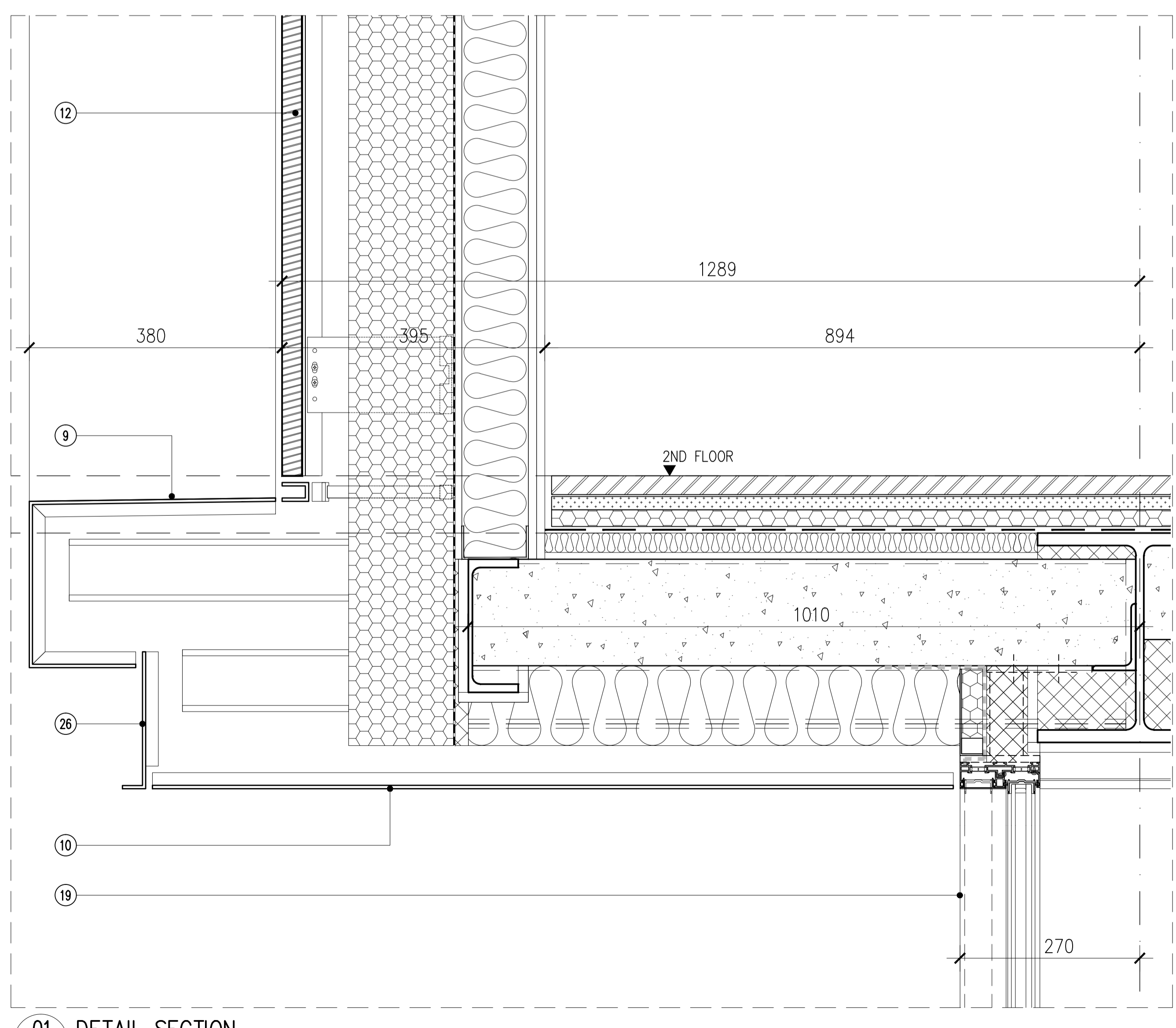
02 DETAIL SECTION
SCALE: 1:5 (A1)



05 STONE JOINT DETAIL (PLAN)
SCALE: 1:2 (A1)

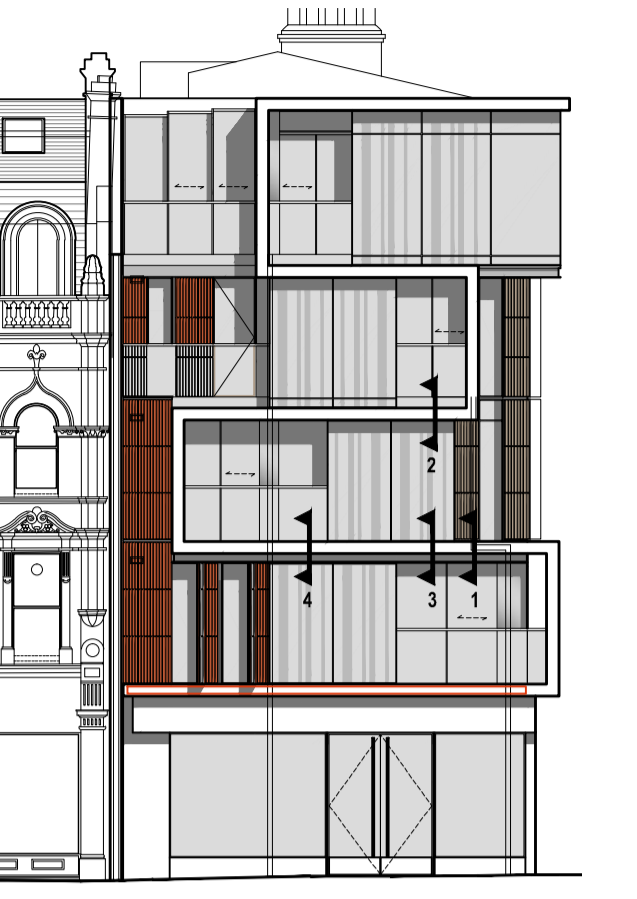


03 DETAIL SECTION
SCALE: 1:5 (A1)



01 DETAIL SECTION
SCALE: 1:5 (A1)

- NOTES**
- 1 The Contractor must check and confirm all dimensions
 - 2 All discrepancies must be reported and resolved by the Architect before works commence
 - 3 This drawing is not to be scaled
 - 4 All work and materials to be in accordance with current applicable Statutory Legislation and to comply with all relevant Codes of Practice and British Standards



FACADE MATERIAL LEGEND

1. Clay Facing Brickwork - F10/110A
2. Clay Facing Brickwork - F10/110B
3. Terracotta Rainscreen Cladding - H92/120B
4. 25/14 Cavity Wall Tie System - F30/215A
5. Plastic Weep Holes - F30/132
6. Partial Fill Cavity Insulation - F30/155
7. Flexible Cavity Tray - F30/345
8. Brickwork Support System - F30/260
9. Stone Wall Cladding - H92/120D
10. Stone Soffit Cladding - H92/120E
11. Roof Windows - L10/480
12. Terracotta Rainscreen Cladding - H92/120A+B
13. Steel Framed Ceramic Fin - H92/120C
14. Curtain Walling Shadow Gap Profile - H11/110F
15. SSG Curtain Walling - H11/110A
16. SSG Curtain Walling Door/Window - H11/110B
17. SSG Curtain Walling Fixed Window - H11/110C
18. SSG Curtain Walling Spandrel Panel - H11/110D
19. Aluminium Sliding Door - L10/330D
20. Aluminium Sliding Rooflight - L10/460A
21. Aluminium Louvres (Brise Soleil) - L10/671
22. Aluminium Louvres (Plant Screen) - L10/650C
23. Aluminium Rainscreen Cladding - H92/110A
24. Aluminium Soffit Cladding - H92/110B
25. Perforated Aluminium Panel - H92/110C
26. Aluminium Shadow Gap Profile - H92/110A
27. Cavity Closer - F30/180
28. Cavity Barrier (Rainscreen) - P10/432A
29. S/S Windpost - F30/255
30. Steel Flush Door - L20/481
31. Perforated Terracotta Panel - H92/120F
32. M/S Steel Balustrade - L30/551
33. Timber Sash Windows - L10/210A
34. Timber Sash Windows - L10/210B
35. Rainscreen Insulation - H92/776A
36. Rainscreen Breather Membrane - H92/785
37. Vapour Control Layer - H92/180
38. External Wall Steel Framing System
39. Zinc Standing Seam Walling - H74/110A
40. Cavity Barrier (Brick Wall) - P10/432B
41. Frameless Glass Balustrade - L30/552
42. Cast Iron Air Brick - F30/161
43. Aluminium Window Reveal - H31/110C
44. Aluminium Coping; anodised - H31/110B
45. Aluminium Window; clear glazed - L10/330A
46. Aluminium Window; with screen - L10/330B
47. Aluminium Window; opaque - L10/330C
48. Aluminium Spandrel Panel - H11/110E
49. Cast Stone Sub Cill - F22/110
50. Cast Stone Coping - F22/110A
51. Aluminium Coping; PPC - H31/110A
52. Timber Fence - Q40/415

P1 Issued for Planning 13/10/14
Rev Date

Rolfe Judd
Architecture Planning Interiors
Old Church Court, Claylands Road, The Oval, London SW8 1NZ
T 020 7556 1500
www.rolfe-judd.co.uk

Client
Goodge Street (Tottenham Court Rd) LLP

Project
**62-63 Tottenham Court Road
1-7 Goodge Street**

Drawing
Cladding Detail Sections

Scale: 1:5 (A1) Date: Oct 14 Status: Planning

Job Number: 5315 Drawing Number: T(20) DE10 Revision: P1