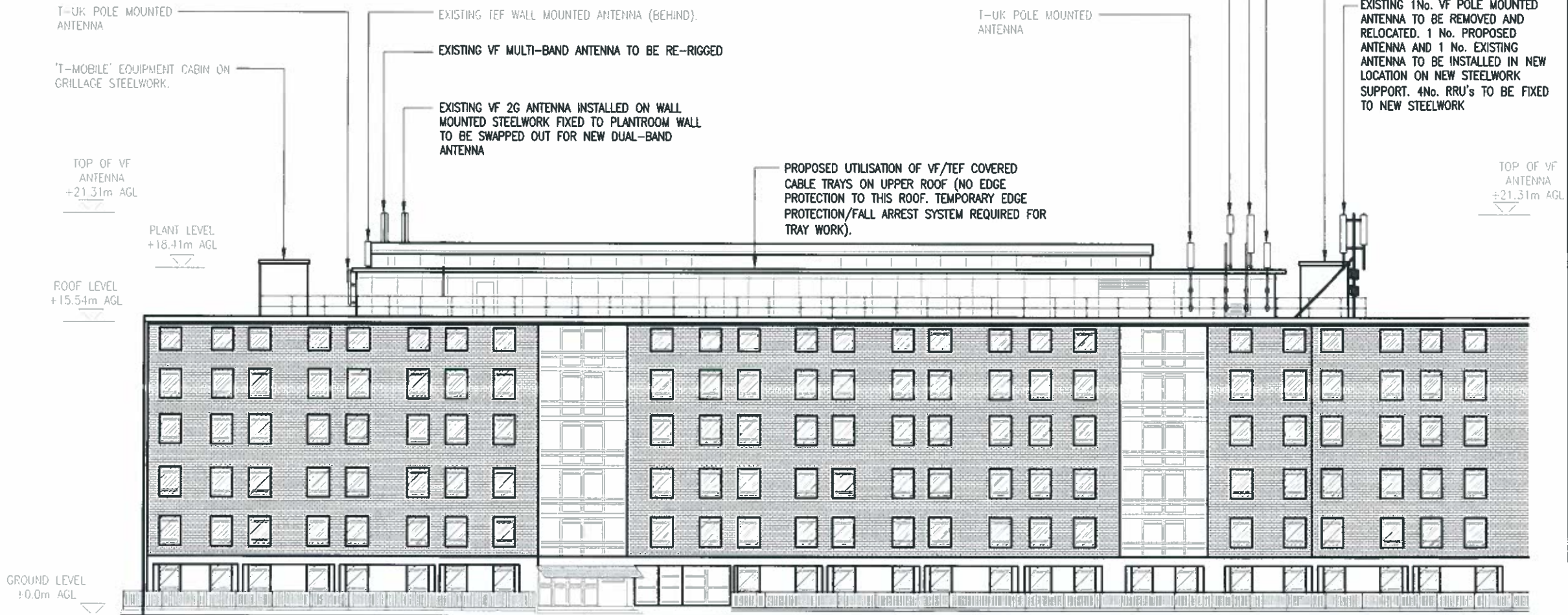


NOTE:
ALL ANTENNAS & EXTRANEIOUS STEELWORK ASSOCIATED WITH THE PROPOSED UPGRADE IS TO BE BONDED INTO THE EXISTING L.P. SYSTEM IN ACCORDANCE WITH BS7671

NOTE:
EXISTING LIGHTNING PROTECTION SYSTEM TO BE TESTED & UTILISED FOR UPGRADE. ALL PROPOSED CABINETS TO BE BONDED BACK TO EXISTING LP SYSTEM USING 25x3mm PVC COVERED COPPER TAPE.



SOUTH WEST ELEVATION
(1:250)

Notes:
1 ALL DIMENSIONS ARE IN MM UNLESS NOTED OTHERWISE

N.G.R. E: 530410 N: 182199

D	Issued for Construction	BB	SRR	12.03.14
C	Antennas relocated onto grillage	CM	LDC	25.02.14
B	Antenna details amended	PJOB	CM	20.01.14
A	Issued for Planning	GC	CM	13.11.13

REV	MODIFICATION	BY	CH	DATE
-----	--------------	----	----	------

mono #
MONO CONSULTANTS LIMITED
Packwood House
Guild Street
Stratford-upon-Avon
CV37 6RP
t. 44 (0)1789 290099
f. 44 (0)1789 290088
www.monoconsultants.com



CTIL

Cell Name	Opt
INTERNATIONAL HALL OF RESIDENCES	A

Cell ID No		
CTIL	Host	Sharer
(CS) 136008	(VF) 001540	(TEF) 046409

Site Address / Contact Details
INTERNATIONAL HALL OF RESIDENCES
UNIVERSITY OF LONDON
BRUNSWICK SQUARE
LONDON
WC1N 1DJ

Drawing Title: PROPOSED SITE ELEVATION

Purpose of issue: CONSTRUCTION

Drawing Number: 302

Scale	As Shown	Drawn:	GC	Date:	13.11.13	Issue:	D
Checked:	CM	Date:	13.11.13	Approved:	AB	Date:	13.11.13