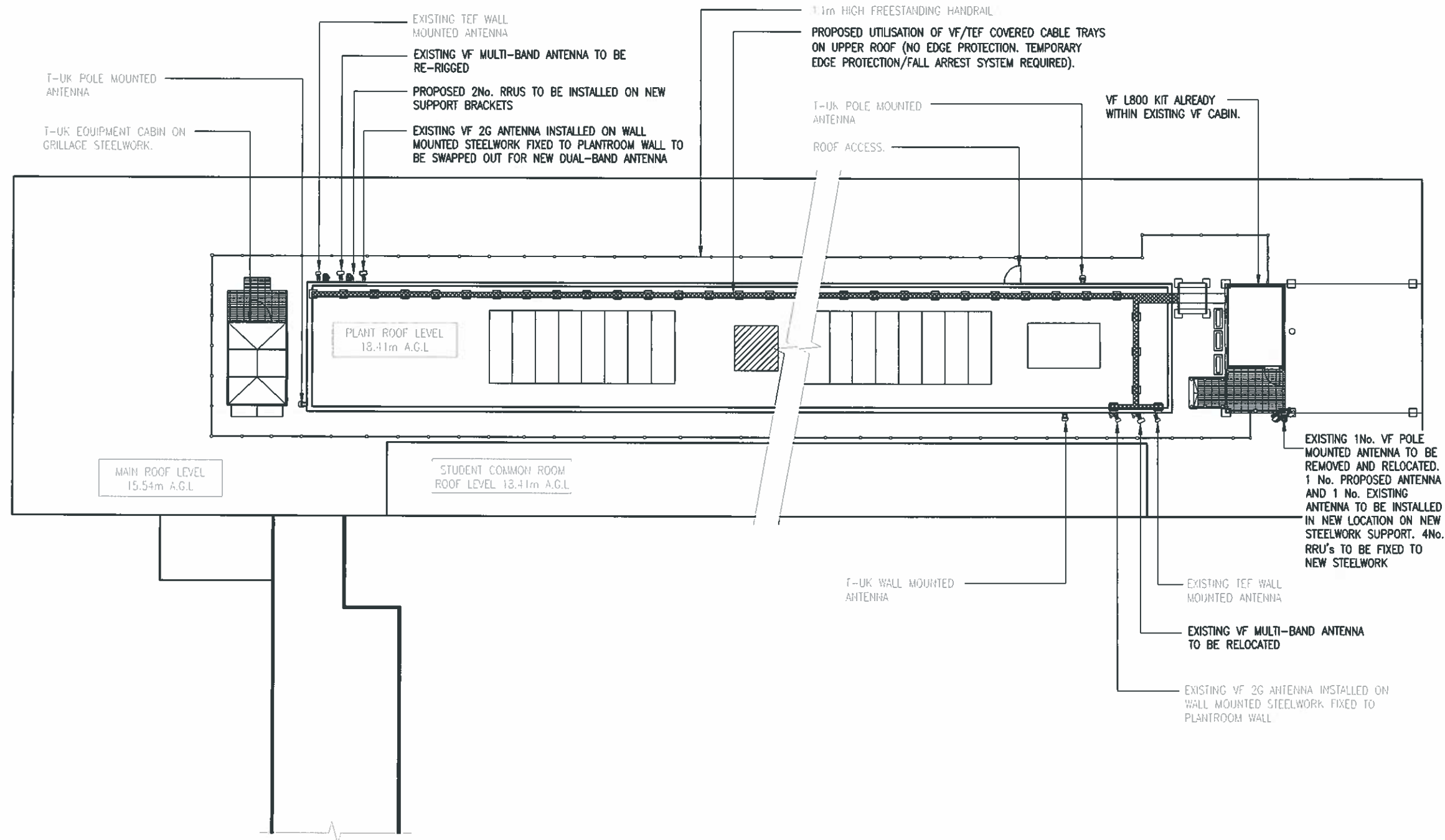


NOTE:
ALL ANTENNAS & EXTRANEOUS
STEELWORK ASSOCIATED WITH THE
PROPOSED UPGRADE IS TO BE
BONDED INTO THE EXISTING L.P.
SYSTEM IN ACCORDANCE WITH BS7671

NOTE:
EXISTING LIGHTNING PROTECTION SYSTEM
TO BE TESTED & UTILISED FOR UPGRADE.
ALL PROPOSED CABINETS TO BE BONDED
BACK TO EXISTING LP SYSTEM USING
25x3mm PVC COVERED COPPER TAPE.



PROPOSED SITE PLAN
(1:200)

Notes:
1 ALL DIMENSIONS ARE IN MM UNLESS NOTED OTHERWISE

N.G.R. E: 530410 N: 182199

REV	MODIFICATION	BY	CH	DATE
D	Issued for Construction	BB	SRR	12.03.14
C	Antennas relocated onto grille	CM	LDC	25.02.14
B	Antenna details amended	PUOB	CM	20.01.14
A	Issued for Planning	GC	CM	13.11.13

mono #

MONO CONSULTANTS LIMITED
Pockwood House
Guild Street
Stratford-upon-Avon
CV37 6RP
t. 44 (0)1789 290099
f. 44 (0)1789 290088
www.monoconsultants.com



Cell Name	Opt
INTERNATIONAL HALL OF RESIDENCES	A

Cell ID No		
CTIL	Host	Sharer
(CS) 136008	(VF) 001540	(TEF) 046409

Site Address / Contact Details
INTERNATIONAL HALL OF RESIDENCES
UNIVERSITY OF LONDON
BRUNSWICK SQUARE
LONDON
WC1N 1DJ

Drawing Title: PROPOSED SITE PLAN

Purpose of issue: CONSTRUCTION

Drawing Number: 202

Scale:	As Shown	Drawn:	GC	Date:	13.11.13	Issue:	D
Checked:	CM	Date:	13.11.13	Approved:	AB	Date:	13.11.13