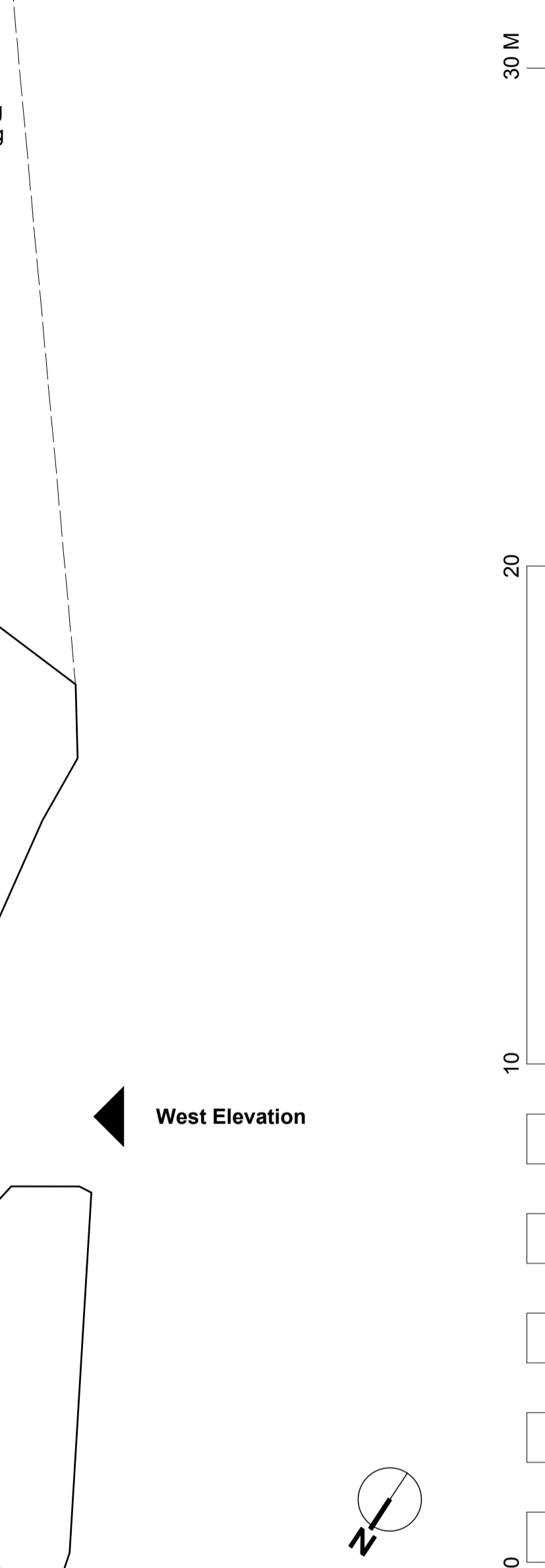
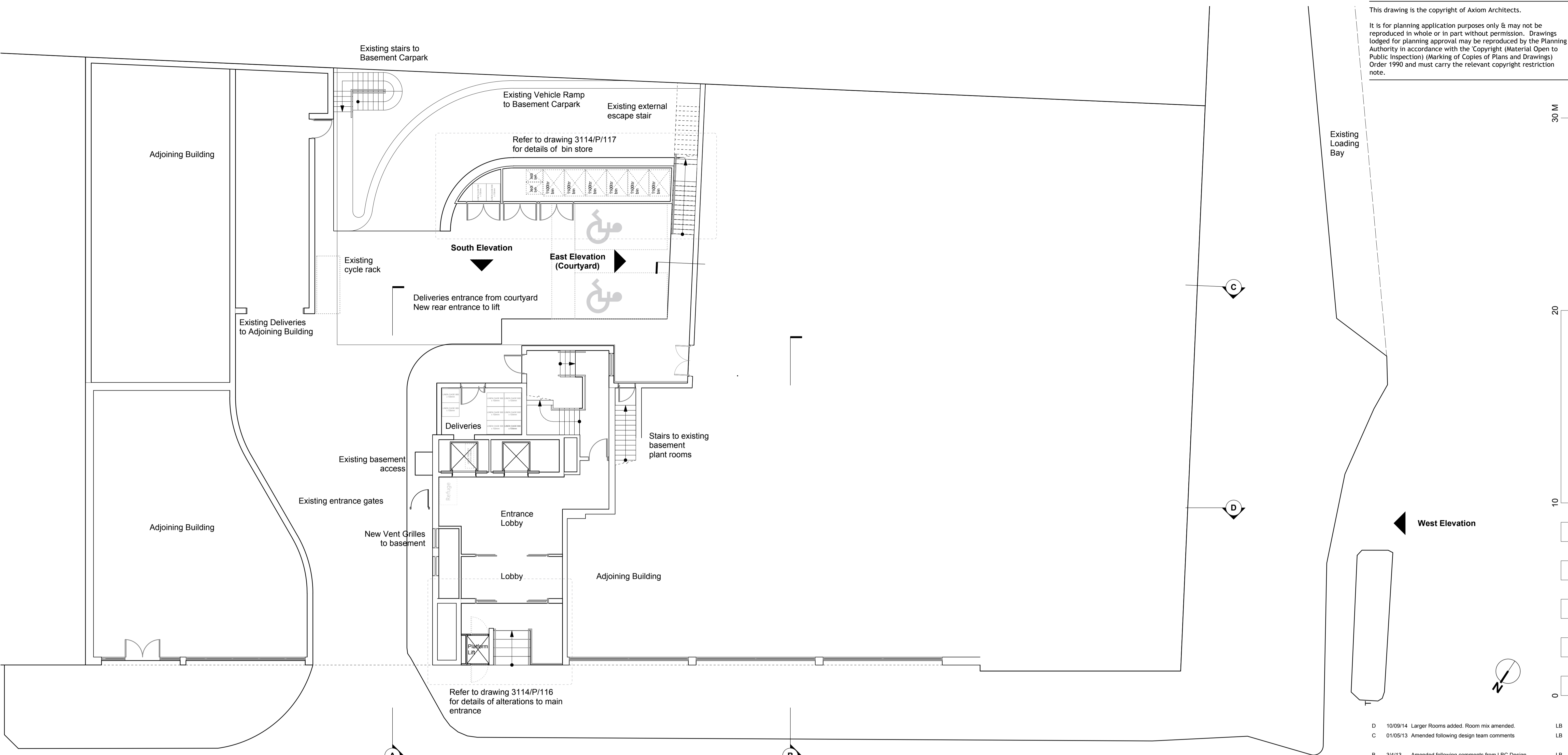


This drawing is the copyright of Axiom Architects.  
 It is for planning application purposes only & may not be reproduced in whole or in part without permission. Drawings lodged for planning approval may be reproduced by the Planning Authority in accordance with the Copyright (Material Open to Public Inspection) (Marking of Copies of Plans and Drawings) Order 1990 and must carry the relevant copyright restriction note.



Rev	Date	Description	By
D	10/09/14	Larger Rooms added. Room mix amended.	LB
C	01/05/13	Amended following design team comments	LB
B	3/4/13	Amended following comments from LBC Design & Conservation Officer and Public Consultation.	LB
A	22/2/13	Amended following design team comments	LB

Brooklands Yard  
 Southover High Street  
 Lewes  
 East Sussex  
 BN7 1HU

Tel 01273 479269  
 Fax 01273 483060  
 www.axiomarchitects.co.uk

**AXIOM ARCHITECTS**

Client  
**TORRINGTON PLACE LTD & WHITBREAD GROUP PLC**

Project  
**BROOK HOUSE**  
 2-16 TORRINGTON PLACE  
 LONDON

Drawing  
**GROUND FLOOR PLAN**  
**AS PROPOSED**

Scale	Status	Date	Drawn	Checked
1:100@A1	PLANNING	31/11/13	LB	

Drawing No. **3114/P/100** Revision **D**

**Room Mix Schedule**

Floor	Double	UA	Double / Future UA	Larger Room	Floor Total
-1	-	-	-	-	
G	-	-	-	-	
1	8	2	0	4	14
2	16	3	2	13	34
3	20	2	2	13	37
4	24	1	3	9	37
5	14	1	1	9	25
6	21	0	0	0	21
Roof	-	-	-	-	-
<b>Total</b>	<b>103</b>	<b>9</b>	<b>8</b>	<b>48</b>	<b>168</b>