

Existing metal panel
 Existing awning box
 Existing light box

FRONT ELEVATION



Existing Shopfront - pre strip out



Existing Shopfront - post strip out



Proposed Site - 167 Finchley Road

Rev N°	Description	Drawn by	Date
A	Existing signage heights	RW	23.09.14
B	Existing signage in relation to photos & upper floors	RW	14.10.14

Notes
 This drawing represents a performance guide upon which the contractor/subcontractor must base his/her working drawings & details. Include all necessary tolerances prior to manufacture and installation
 Contractor to must undertake a full survey of the area to establish all dimensions & ensure accurate setting out.
 Advise on suitability of all details shown to ensure structural stability, ease and economy of construction
 Refer to digital master artwork in regard to all graphic work shown

bedrock
 Bedrock Design Consultants Ltd
 2nd Floor, 39 Gold Street, Northampton, NN1 1RA
 T 01604 250002
 F 01604 250003
 info@bedrockdesign.co.uk

Client	Caffe Nero	
Project	167 Finchley Road, Swiss Cottage	
Description	Existing Shopfront	
Scale	Drawn by	Date
1/50 @ A3	RW	27/08/2014
Drawing N°	Revision	
CN599 - 600	B	

This drawing is the copyright of Bedrock Design Consultants Ltd. This drawing cannot be copied, reproduced, retained or disclosed to any unauthorised person without prior permission in writing from the designer.



SIDE ELEVATION

Rev N°	Description	Drawn by	Date
A	Existing signage heights	RW	23.09.14
B	Existing signage in relation to photos & upper floors	RW	14.10.14

Notes

This drawing represents a performance guide upon which the contractor/subcontractor must base his/her working drawings & details. Include all necessary tolerances prior to manufacture and installation

Contractor to must undertake a full survey of the area to establish all dimensions & ensure accurate setting out.

Advise on suitability of all details shown to ensure structural stability, ease and economy of construction

Refer to digital master artwork in regard to all graphic work shown

bedrock

Bedrock Design Consultants Ltd
 2nd Floor, 39 Gold Street, Northampton,
 NN1 1RA
 T 01604 250002
 F 01604 250003
 info@bedrockdesign.co.uk

Client
Caffe Nero

Project
 167 Finchley Road, Swiss Cottage

Description
Existing Shopfront

Scale Drawn by Date
 1/50 @ A3 RW 05/09/2014

Drawing N° Revision
 CN599 - 601 B

This drawing is the copyright of Bedrock Design Consultants Ltd. This drawing cannot be copied, reproduced, retained or disclosed to any unauthorised person without prior permission in writing from the designer.

Rev N°	Description	Drawn by	Date
A	Decal height on side elevation	RW	18.09.14
B	Signage & Decal revisions	RW	23.09.14
C	Chalk board	JB	24.09.14
D	Notes added to drawing	RW	01.10.14
E	Upper floors added to drawing.	MS	10.10.14
F	Section through shopfront	RW	14.10.14

Notes

This drawing represents a performance guide upon which the contractor/subcontractor must base his/her working drawings & details. Include all necessary tolerances prior to manufacture and installation.

Contractor to must undertake a full survey of the area to establish all dimensions & ensure accurate setting out.

Advise on suitability of all details shown to ensure structural stability, ease and economy of construction

Refer to digital master artwork in regard to all graphic work shown

AS BUILT

bedrock
 Bedrock Design Consultants Ltd
 2nd Floor, 39 Gold Street, Northampton,
 NN1 1RA
 T 01604 250002
 F 01604 250003
 info@bedrockdesign.co.uk

Client
Caffe Nero

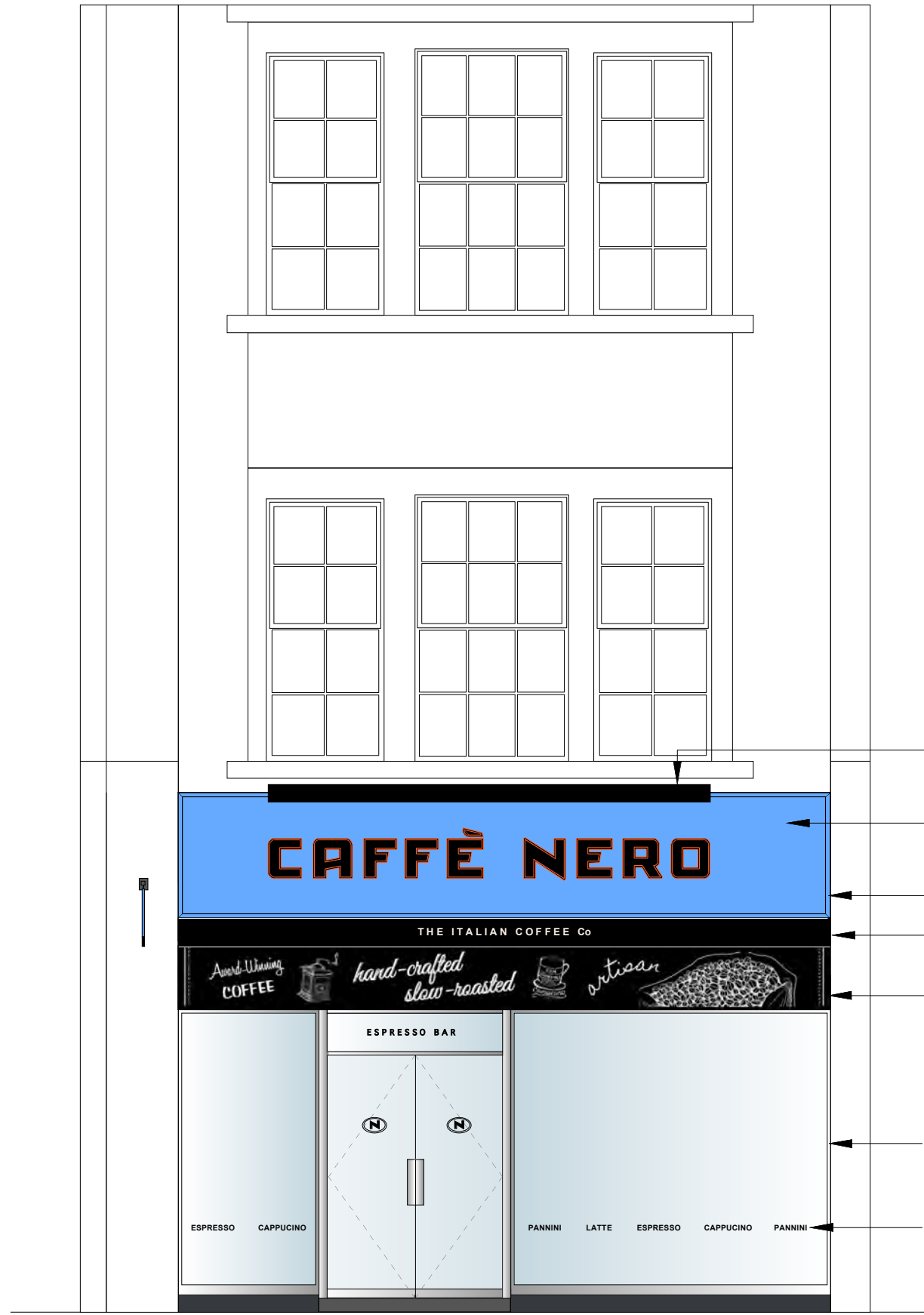
Project
 167 Finchley Road, Swiss Cottage

Description
Proposed Shopfront

Scale	Drawn by	Date
1/50 @ A3	RW	05/09/2014

Drawing N°	Revision
CN599 - 602	F

This drawing is the copyright of Bedrock Design Consultants Ltd. This drawing cannot be copied, reproduced, retained or disclosed to any unauthorised person without prior permission in writing from the designer.



Lighting Trough

Fascia Sign
 Timber fascia panel to be coated blue BS4800 20E51 with strapline in black and moulded architrave to edges "CAFFÈ NERO" to be rim faced build-up descaled stainless steel with 35mm returns, painted copper

Nom 40mm painted moulding applied to edge of fascia

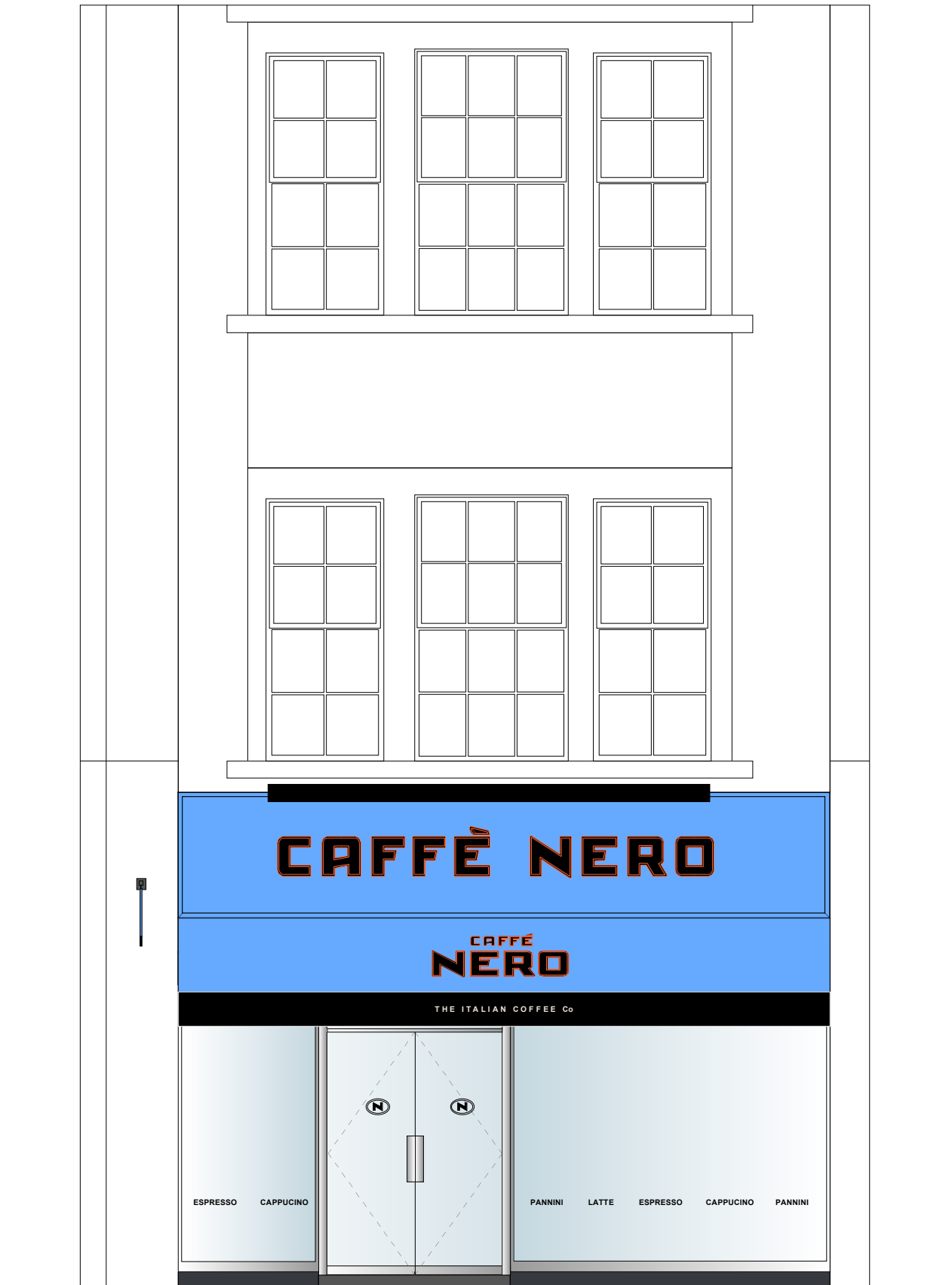
Nom 250mm recessed black awning box. Awning in a retracted position. Refer to specialist contractor drawings for details.

Chalkboard feature - refer to chalkboard fascia style guide for details

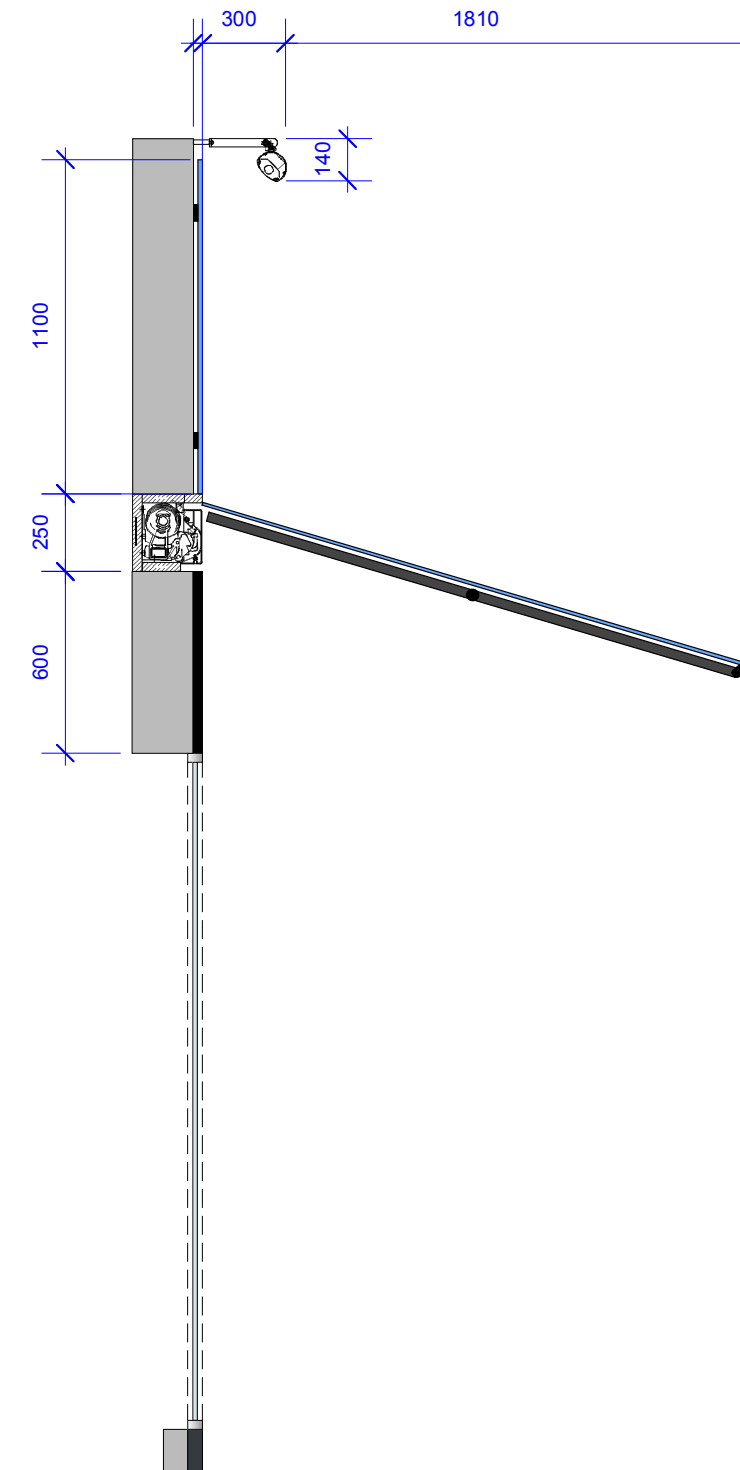
Existing Shopfront to remain & be made good

Black vinyl text with copper key line decals applied to the inner face of glass.
 Clear film applied to the back to help prevent "picking" - refer to Stylo for details

FRONT ELEVATION - Awnings Up



FRONT ELEVATION - Awnings Down



SHOPFRONT SECTION SCALE 1:25 @ A3

Rev N°	Description	Drawn by	Date
A	Decal height on side elevation	RW	18.09.14
B	Signage & Decal revisions	RW	23.09.14
C	Chalk board	JB	24.09.14
D	Notes added to drawing	RW	01.10.14
E	Upper floors added to drawing.	MS	10.10.14
F	Section through shopfront	RW	14.10.14

Notes

This drawing represents a performance guide upon which the contractor/subcontractor must base his/her working drawings & details. Include all necessary tolerances prior to manufacture and installation

Contractor to must undertake a full survey of the area to establish all dimensions & ensure accurate setting out.

Advise on suitability of all details shown to ensure structural stability, ease and economy of construction

Refer to digital master artwork in regard to all graphic work shown

AS BUILT

bedrock

Bedrock Design Consultants Ltd
2nd Floor, 39 Gold Street, Northampton,
NN1 1RA
T: 01604 250002
F: 01604 250003
info@bedrockdesign.co.uk

Client
Caffe Nero

Project
167 Finchley Road, Swiss Cottage

Description
Proposed Shopfront

Scale Drawn by Date
1/50 @ A3 RW 05/09/2014

Drawing N° Revision
CN599 - 603 F

This drawing is the copyright of Bedrock Design Consultants Ltd. This drawing cannot be copied, reproduced, retained or disclosed to any unauthorised person without prior permission in writing from the designer.

Rev N°	Description	Drawn by	Date
A	Decal height on side elevation	RW	18.09.14
B	Signage & Decal revisions	RW	23.09.14
C	Chalk board	JB	24.09.14
D	Notes added to drawing	RW	01.10.14
E	Upper floors added to drawing	MS	10.10.14
F	Section through shopfront	RW	14.10.14

Notes

This drawing represents a performance guide upon which the contractor/subcontractor must base his/her working drawings & details. Include all necessary tolerances prior to manufacture and installation

Contractor to must undertake a full survey of the area to establish all dimensions & ensure accurate setting out.

Advise on suitability of all details shown to ensure structural stability, ease and economy of construction

Refer to digital master artwork in regard to all graphic work shown

Fascia Sign
 Timber fascia panel to be coated blue BS4800 20E51 with strapline in black and moulded architrave to edges 'N' & "CAFFE NERO" to be rim faced build-up descaled stainless steel with 35mm returns, painted copper.

Fascia Sign
 Bottom 250mm of fascia to be painted black with "The Italian Coffee Co" & "Espresso Bar" applied in cream vinyl.

Canvas Awning Down
 New canvas & metal awning, in coloured to match 'Nero' Blue with stacked Caffe Nero signage. Please refer to Smoke Zone for details.



Traditional Projecting Sign
 10mm thick flat panel coated light blue BS4800 20E51. Strap Line to be black. Traditional style wall bracket to include machined swing sign blocks and fixing rod. 2.5mm flat cut aluminium text coated copper with face applied black and white vinyl detail. "The Italian Coffee Co" in face applied cream vinyl. Projection brackets to be coated eggshell black

AS BUILT

bedrock
 Bedrock Design Consultants Ltd
 2nd Floor, 39 Gold Street, Northampton, NN1 1RA
 T 01604 250002
 F 01604 250003
 info@bedrockdesign.co.uk

Client
Caffe Nero

Project
 167 Finchley Road, Swiss Cottage

Description
 Proposed Shopfront

Scale
 1/50 @ A3

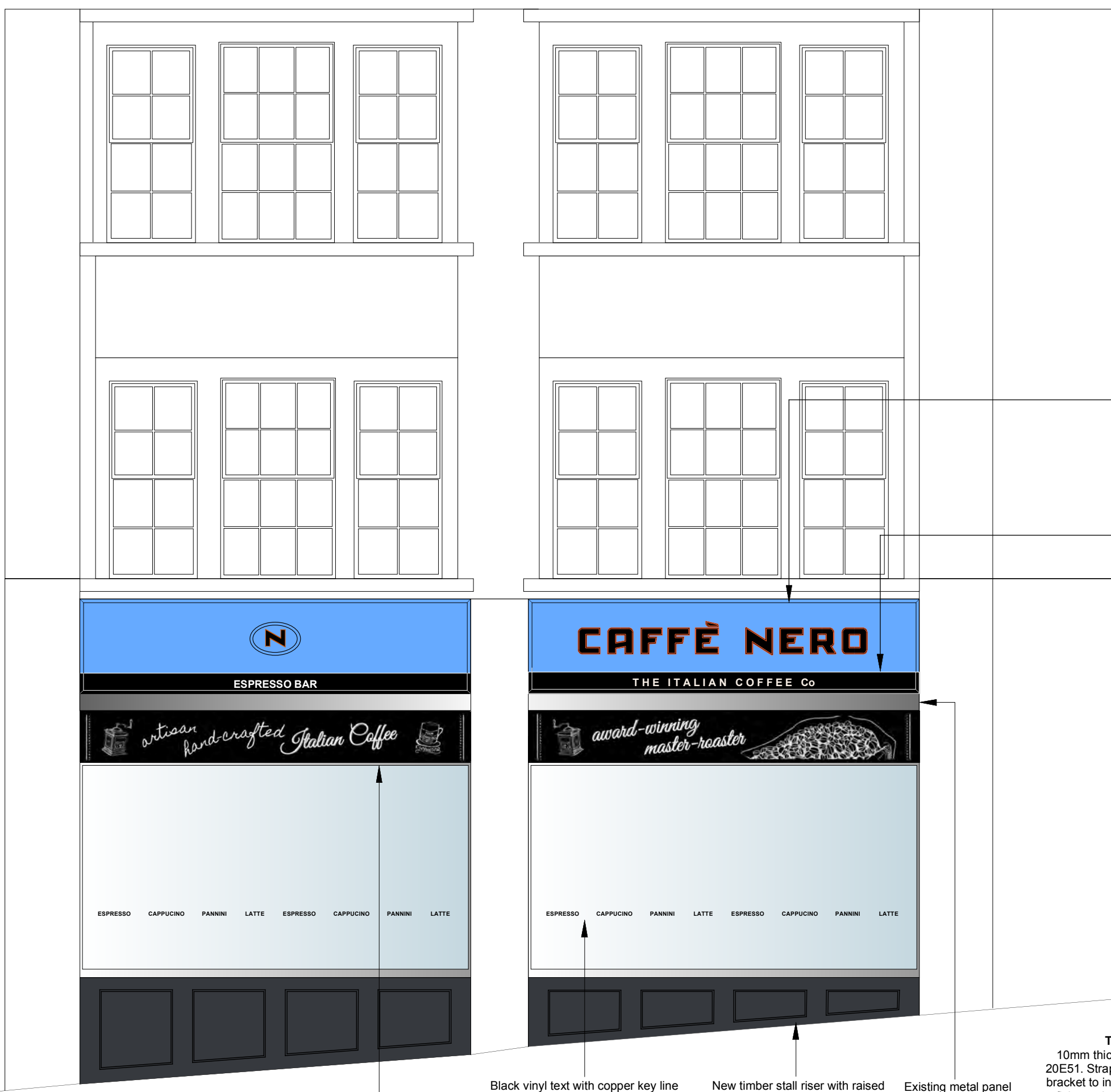
Drawn by
 RW

Date
 05/09/2014

Drawing N°
 CN599 - 604

Revision
 F

This drawing is the copyright of Bedrock Design Consultants Ltd. This drawing cannot be copied, reproduced, retained or disclosed to any unauthorised person without prior permission in writing from the designer.



SIDE ELEVATION

Chalkboard feature - refer to chalkboard fascia style guide for details

Black vinyl text with copper key line decals applied to the inner face of glass. Clear film applied to the back to help prevent "picking" - refer to Stylo for details

New timber stall riser with raised and fielded panels and painted Farrow & Ball Ref: Railings 31

Existing metal panel to remain

Traditional Projecting Sign
 10mm thick flat panel coated light blue BS4800 20E51. Strap Line to be black. Traditional style wall bracket to include machined swing sign blocks and fixing rod. 2.5mm flat cut aluminium text coated copper with face applied black and white vinyl detail. "The Italian Coffee Co" in face applied cream vinyl. Projection brackets to be coated eggshell black